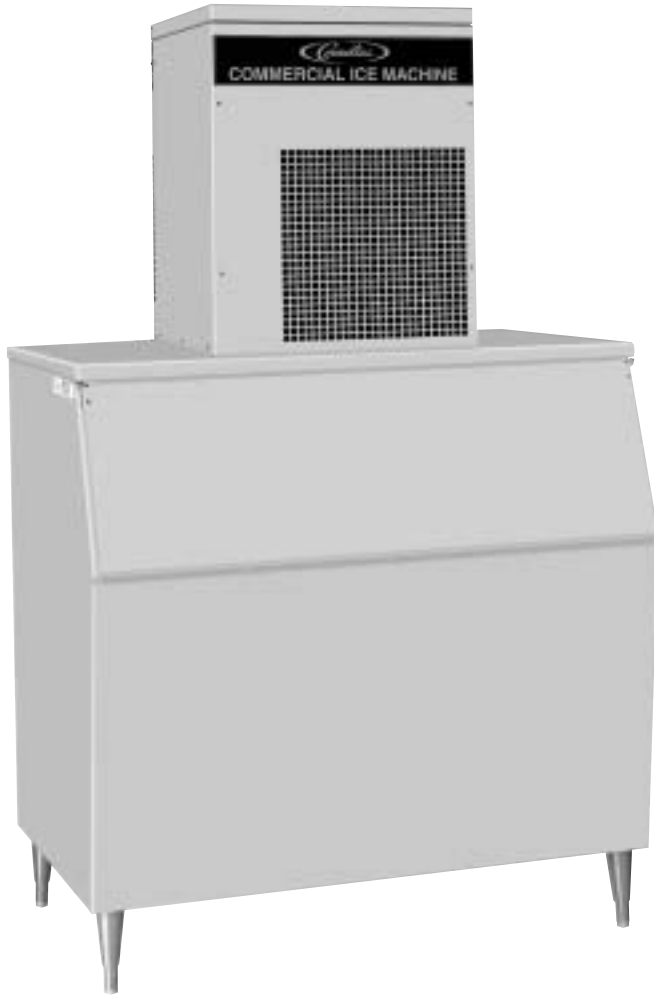


# WCC-1001

## Continuous Compressed Ice Maker



### Features:

- Energy efficient, 3.89 KWH/100 lbs.
- CFC-free, R-404A refrigerant
- Ice maker uses 100% of water
- Quality “chewable” ice
- Fewer moving parts, eliminates the use of water pumps, hot gas solenoids, timers and noisy harvest cycles

### Options:

- Air cooled, water cooled, or remote cooled
- Water inlet kit
- Storage bins



# WCC-1001

## Technical Specifications:

**Description:** Continuous compressed ice cuber

**Compressor:** 1 H.P.

**Refrigerant:** CFC-Free, R-404A

**Voltage:** 208-230/60, 220-240/50

**Minimum Circuit Amps:** 15

**Ice Production Capacity (60 cycle):**

940 lbs. @ 70°F Air/50°F Water  
(426.38 kgs. @ 21.09°C Air/10.0°C water)

**[50 cycle is 738 lbs. (355 kgs.) per day]**

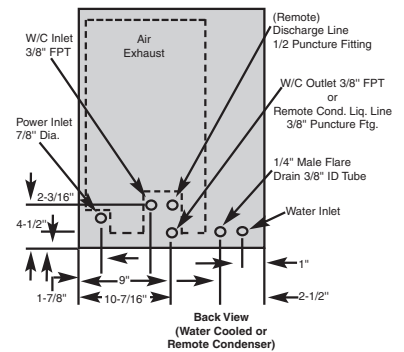
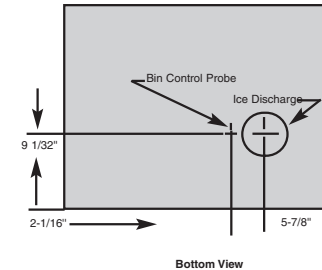
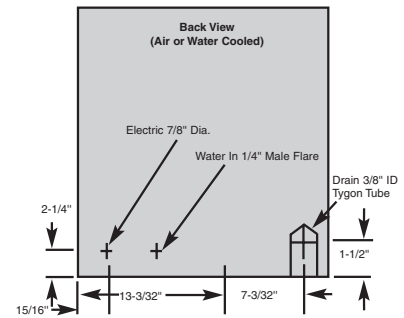
**Cabinet Construction:** Stainless steel

### Dimensions:

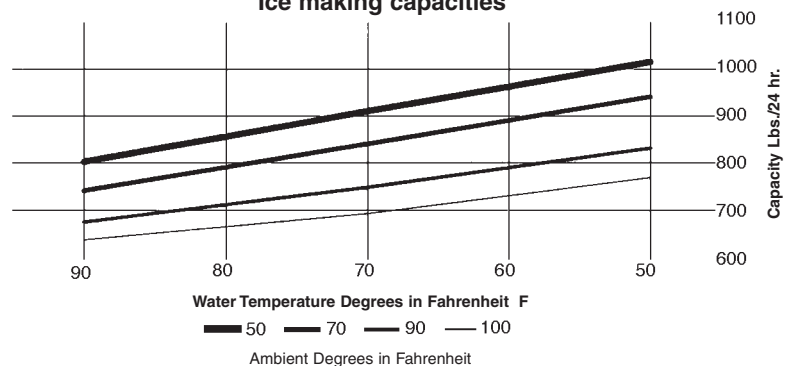
22" (55.88 cm) wide  
24" (60.96 cm) deep  
27" (68.58 cm) high

**Shipping Weight:** 210 lbs. (95.25 kgs.)

### Agency Listings:



### Ice making capacities



Part No.	Model No	Standard Electrical	Condenser	Production 70°/50° lbs/kgs	Shipping Weight lbs/kgs	Operating Weight lbs/kgs	Voltage Range
569200033	WCC-1001A	208-230/60/1	Air	940 lbs/426 kgs	210 lbs/95 kgs	194	198-253V
569200034	WCC-1001W	208-230/60/1	Water	940 lbs/426 kgs	210 lbs/95 kgs	194	198-253V
569200037	WCC-1001R*	208-230V/60/1	Remote	940 lbs/426 kgs	210 lbs/95 kgs	194	198-253V
569200035	WCC-1002A	220-240V/50/1	Water	783 lbs/355 kgs	210 lbs/95 kgs	194	209-264V

\*WCC-1001R Remote requires WC1 Condenser and Line Set



For more information or to place an order, contact your sales representative or authorized distributor.

**In the US:**  
Phone: 1-800-238-3600  
Fax: 1-800-535-4235  
**Outside the US:**  
Phone: 1-763-421-6120  
Fax: 1-763-422-3297

**IMI Cornelius Inc.**  
One Cornelius Place  
Anoka, MN 55303-6234  
USA