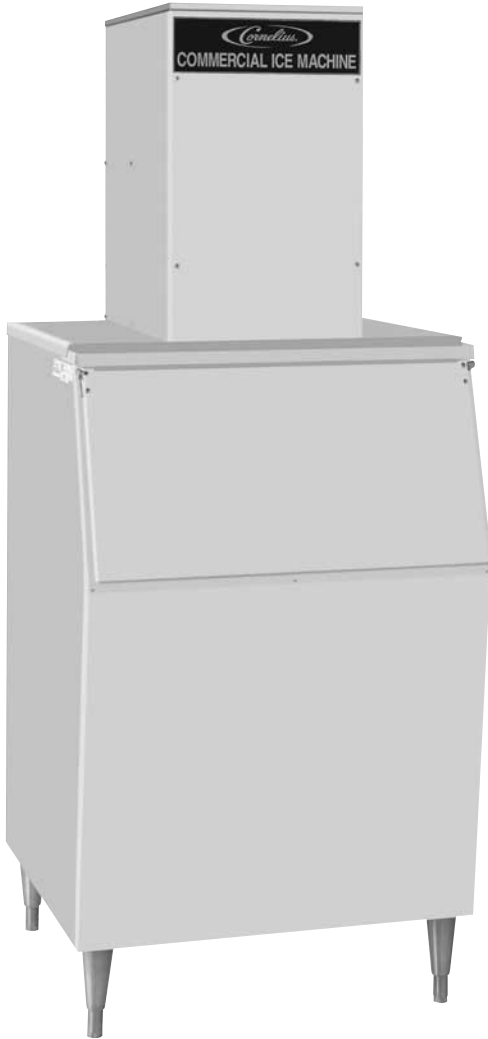




WCC-500

Continuous Compressed Ice Maker



Features:

- Compact, only 14 1/2" wide
- Energy efficient, 4.45 KWH/100 lbs.
- CFC-free, R-404A refrigerant
- Ice maker uses 100% of water
- Quality "chewable" ice
- Fewer moving parts, eliminates the use of water pumps, hot gas solenoids, timers and noisy harvest cycles

Options:

- Air cooled, or water cooled
- Water conditioning kit
- Water inlet kit
- Storage bins



Technical Specifications:

Description: Continuous compressed ice cuber

Compressor: 1/2 H.P.

Refrigerant: CFC-Free, R-404

Voltage: 115/60, 220-240/50

Minimum Circuit Amps: 15

Ice Production Capacity (60 cycle):

369 lbs. @ 70°F Air/50°F Water
(167.38 kg @ 21.09°C Air/10.0°C water)

[50 cycle is 312 lbs. (141.52 kgs.) per day]

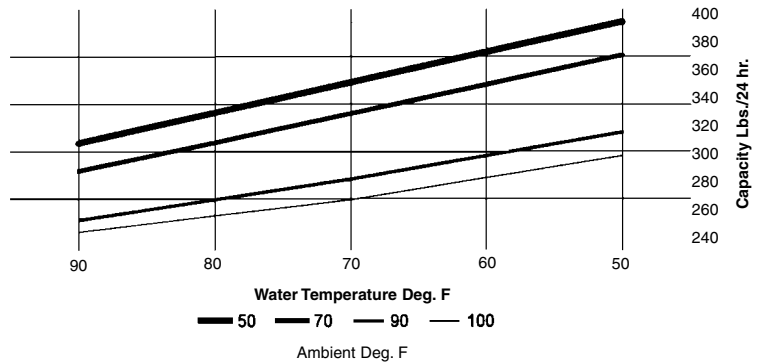
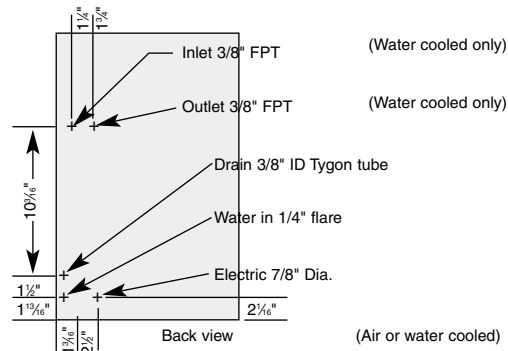
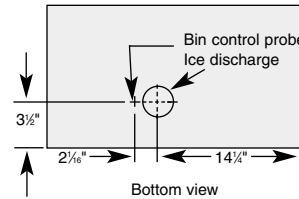
Cabinet Construction: Stainless steel

Dimensions:

14 1/2" (36.83 cm) wide
25" (63.50 cm) deep
24 1/2" (62.23.14 cm) high

Shipping Weight: 154 lbs. (70 kgs)

Agency Listings:



Part No.	Model No	Standard Electrical	Condenser	Production 70°/50° lbs/kgs	Shipping Weight lbs/kgs	Operating Weight lbs/kgs	Voltage Range
569200018	WCC-500A	115V/60/1	Air	369 lbs/168 kgs	154 lbs/70 kgs	142 lbs/65 kgs	110-126V
569200019	WCC-500W	115V/60/1	Water	369 lbs/168 kgs	154 lbs/70 kgs	142 lbs/65 kgs	110-126V
569200020	WCC-502A	220-240V/50/1	Air	312 lbs/142 kgs	154 lbs/70 kgs	142 lbs/65 kgs	209-264V
569200021	WCC-502W	220-240V/50/1	Water	312 lbs/142 kgs	154 lbs/70 kgs	142 lbs/65 kgs	209-264V



For more information or to place an order, contact your sales representative or authorized distributor.

In the US:

Phone: 1-800-238-3600

Fax: 1-800-535-4235

Outside the US:

Phone: 1-612-421-6120

Fax: 1-612-422-3297

IMI Cornelius Inc.

One Cornelius Place
Anoka, MN 55303-6234
USA