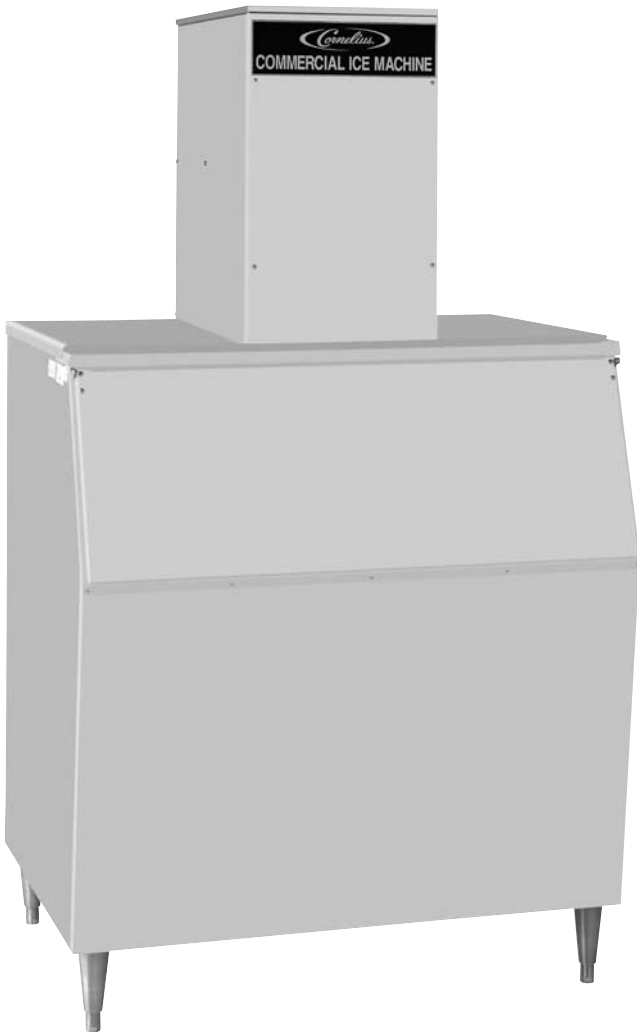




WCC-700

Continuous Compressed Ice Maker



Features:

- Compact, only 14 1/2" wide
- Energy efficient, 4.95 KWH/100 lbs.
- CFC-free, R-404A refrigerant
- Ice maker uses 100% of water
- Quality "chewable" ice
- Fewer moving parts, eliminates the use of water pumps, hot gas solenoids, timers and noisy harvest cycles

Options:

- Air cooled, water cooled, or remote cooled
- Water conditioning kit
- Water inlet kit
- Storage bins



Technical Specifications:

Description: Continuous compressed ice cuber

Compressor: 3/4 H.P.

Refrigerant: CFC-Free, R-404A

Voltage: 115/60, 208-230/60, 220-240/50

Minimum Circuit Amps: 20

Ice Production Capacity (60 cycle):

616 lbs. @70°F Air/50°F Water
(279.41 kg @21.09°C Air/10.0°C water)

[50 cycle is 520 lbs. (235.87 kgs.) per day]

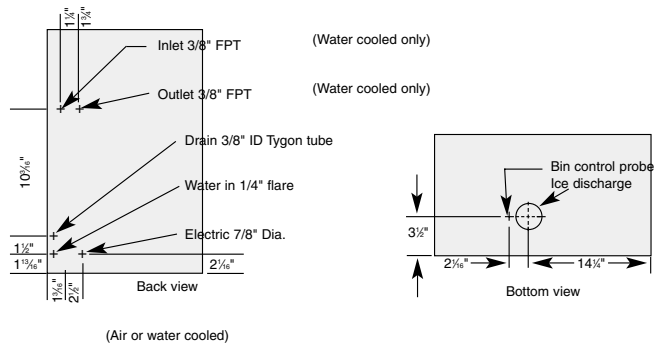
Cabinet Construction: Stainless steel

Dimensions:

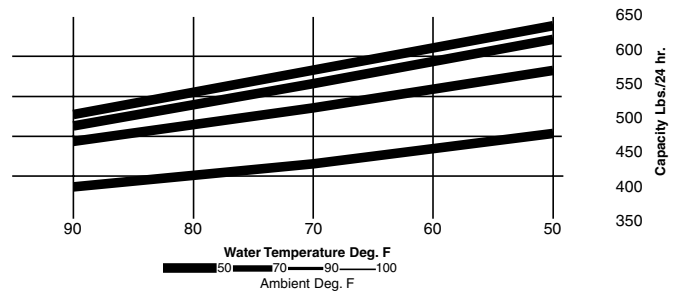
- 14 1/2" (36.83 cm) wide
- 25" (63.50 cm) deep
- 24 1/2" (62.23.14 cm) high

Shipping Weight: 163 lbs. (74 kgs.)

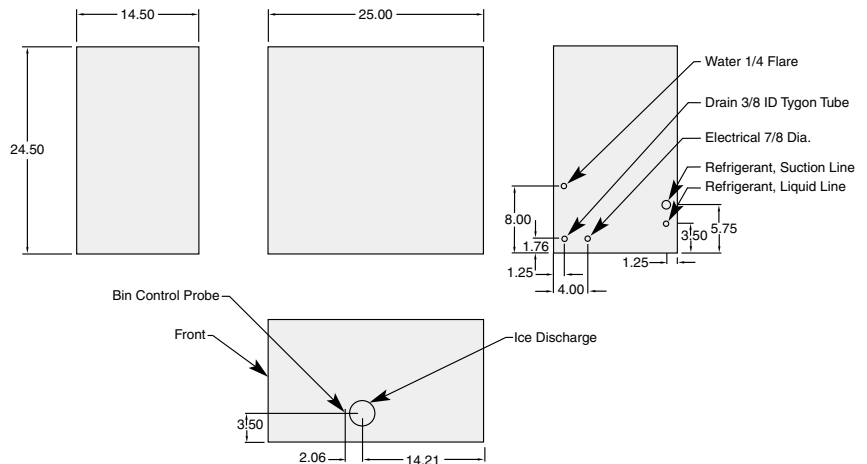
Agency Listings:



Ice making capacities



WCC 700 R



Part No.	Model No	Standard Electrical	Condenser	Production 70°/50° lbs/kgs	Shipping Weight lbs/kgs	Operating Weight lbs/kgs	Voltage Range
569200025	WCC-700A	115V/60/1	Air	616 lbs/279 kgs	163 lbs/74 kgs	152 lbs/70 kgs	110-126V
569200026	WCC-700W	115V/60/1	Water	616 lbs/279 kgs	163 lbs/74 kgs	152 lbs/70 kgs	110-126V
569200079	WCC-700R*	115V/60/1	Remote	616 lbs/279 kgs	138 lbs/63 kgs	126 lbs/57 kgs	110-126V
569200027	WCC-701A	220-230V/60/1	Air	616 lbs/279 kgs	163 lbs/74 kgs	152 lbs/70 kgs	198-253V
569200028	WCC-701W	220-230V/60/1	Water	616 lbs/279 kgs	163 lbs/74 kgs	152 lbs/70 kgs	198-253V
569200029	WCC-702A	220-230V/50/1	Air	520 lbs/236 kgs	163 lbs/74 kgs	152 lbs/70 kgs	209-264V
569200030	WCC-702W	220-230V/50/1	Water	520 lbs/236 kgs	163 lbs/74 kgs	152 lbs/70 kgs	209-264V



For more information or to place an order, contact your sales representative or authorized distributor.

In the US:
Phone: 1-800-238-3600
Fax: 1-800-535-4235
Outside the US:
Phone: 1-763-421-6120
Fax: 1-763-422-3297

IMI Cornelius Inc.
One Cornelius Place
Anoka, MN 55303-6234
USA