



JDF-2S *Silver Series®*

JDF-2S P/H or P/C with Non LIT or LIT Graphic Door
JDF-2S P/H or P/C with LIT 2 Segment GFX Door



ILLUSTRATED PARTS CATALOG

Designs, materials, weights, specifications, and dimensions for equipment or replacement parts are subject to change without notice.

BUNN-O-MATIC CORPORATION

POST OFFICE BOX 3227
SPRINGFIELD, ILLINOIS 62708-3227
PHONE: (217) 529-6601 FAX: (217) 529-6644
www.bunn.com

BUNN-O-MATIC COMMERCIAL PRODUCT WARRANTY

Bunn-O-Matic Corp. ("BUNN") warrants equipment manufactured by it as follows:

- 1) Airpots, thermal carafes, decanters, GPR servers, iced tea/coffee dispensers, MCR/MCP/MCA single cup brewers, thermal servers and ThermoFresh® servers (mechanical and digital) 1 year parts and 1 year labor.
- 2) All other equipment - 2 years parts and 1 year labor plus added warranties as specified below:
 - a) Electronic circuit and/or control boards - parts and labor for 3 years.
 - b) Compressors on refrigeration equipment - 5 years parts and 1 year labor.
 - c) Grinding burrs on coffee grinding equipment to grind coffee to meet original factory screen sieve analysis - parts and labor for 4 years or 40,000 pounds of coffee, whichever comes first.

These warranty periods run from the date of installation BUNN warrants that the equipment manufactured by it will be commercially free of defects in material and workmanship existing at the time of manufacture and appearing within the applicable warranty period. This warranty does not apply to any equipment, component or part that was not manufactured by BUNN or that, in BUNN's judgment, has been affected by misuse, neglect, alteration, improper installation or operation, improper maintenance or repair, non periodic cleaning and descaling, equipment failures related to poor water quality, damage or casualty. In addition, the warranty does not apply to replacement of items subject to normal use including but not limited to user replaceable parts such as seals and gaskets. This warranty is conditioned on the Buyer 1) giving BUNN prompt notice of any claim to be made under this warranty by telephone at (217) 529-6601 or by writing to Post Office Box 3227, Springfield, Illinois 62708-3227; 2) if requested by BUNN, shipping the defective equipment prepaid to an authorized BUNN service location; and 3) receiving prior authorization from BUNN that the defective equipment is under warranty.

THE FOREGOING WARRANTY IS EXCLUSIVE AND IS IN LIEU OF ANY OTHER WARRANTY, WRITTEN OR ORAL, EXPRESS OR IMPLIED, INCLUDING, BUT NOT LIMITED TO, ANY IMPLIED WARRANTY OF EITHER MERCHANTABILITY OR FITNESS FOR A PARTICULAR PURPOSE. The agents, dealers or employees of BUNN are not authorized to make modifications to this warranty or to make additional warranties that are binding on BUNN. Accordingly, statements by such individuals, whether oral or written, do not constitute warranties and should not be relied upon.

If BUNN determines in its sole discretion that the equipment does not conform to the warranty, BUNN, at its exclusive option while the equipment is under warranty, shall either 1) provide at no charge replacement parts and/or labor (during the applicable parts and labor warranty periods specified above) to repair the defective components, provided that this repair is done by a BUNN Authorized Service Representative; or 2) shall replace the equipment or refund the purchase price for the equipment.

THE BUYER'S REMEDY AGAINST BUNN FOR THE BREACH OF ANY OBLIGATION ARISING OUT OF THE SALE OF THIS EQUIPMENT, WHETHER DERIVED FROM WARRANTY OR OTHERWISE, SHALL BE LIMITED, AT BUNN'S SOLE OPTION AS SPECIFIED HEREIN, TO REPAIR, REPLACEMENT OR REFUND.

In no event shall BUNN be liable for any other damage or loss, including, but not limited to, lost profits, lost sales, loss of use of equipment, claims of Buyer's customers, cost of capital, cost of down time, cost of substitute equipment, facilities or services, or any other special, incidental or consequential damages.

392, A Partner You Can Count On, Air Infusion, AutoPOD, AXIOM, BrewLOGIC, BrewMETER, Brew Better Not Bitter, BrewWISE, BrewWIZARD, BUNN Espresso, BUNN Family Gourmet, BUNN Gourmet, BUNN Pour-O-Matic, BUNN, BUNN with the stylized red line, BUNNlink, Bunn-OMatic, Bunn-O-Matic, BUNNserve, BUNNSERVE with the stylized wrench design, Cool Froth, DBC, Dr. Brew stylized Dr. design, Dual, Easy Pour, EasyClear, EasyGard, FlavorGard, Gourmet Ice, Gourmet Juice, High Intensity, iMIX, Infusion Series, Intellisteam, My Café, Phase Brew, PowerLogic, Quality Beverage Equipment Worldwide, Respect Earth, Respect Earth with the stylized leaf and coffee cherry design, Safety-Fresh, savemycoffee.com, Scale-Pro, Silver Series, Single, Smart Funnel, Smart Hopper, SmartWAVE, Soft Heat, SplashGard, The Mark of Quality in Beverage Equipment Worldwide, ThermoFresh, Titan, trifacta, TRIFECTA (stylized logo), Velocity Brew, Air Brew, Beverage Bar Creator, Beverage Profit Calculator, Brew better, not bitter., Build-A-Drink, BUNNSource, Coffee At Its Best, Cyclonic Heating System, Daypart, Digital Brewer Control, Element, Milk Texturing Fusion, Nothing Brews Like a BUNN, Picture Prompted Cleaning, Pouring Profits, Signature Series, Sure Tamp, Tea At Its Best, The Horizontal Red Line, Ultra are either trademarks or registered trademarks of Bunn-O-Matic Corporation. The commercial trifacta® brewer housing configuration is a trademark of Bunn-O-Matic Corporation.

TABLE OF CONTENTS

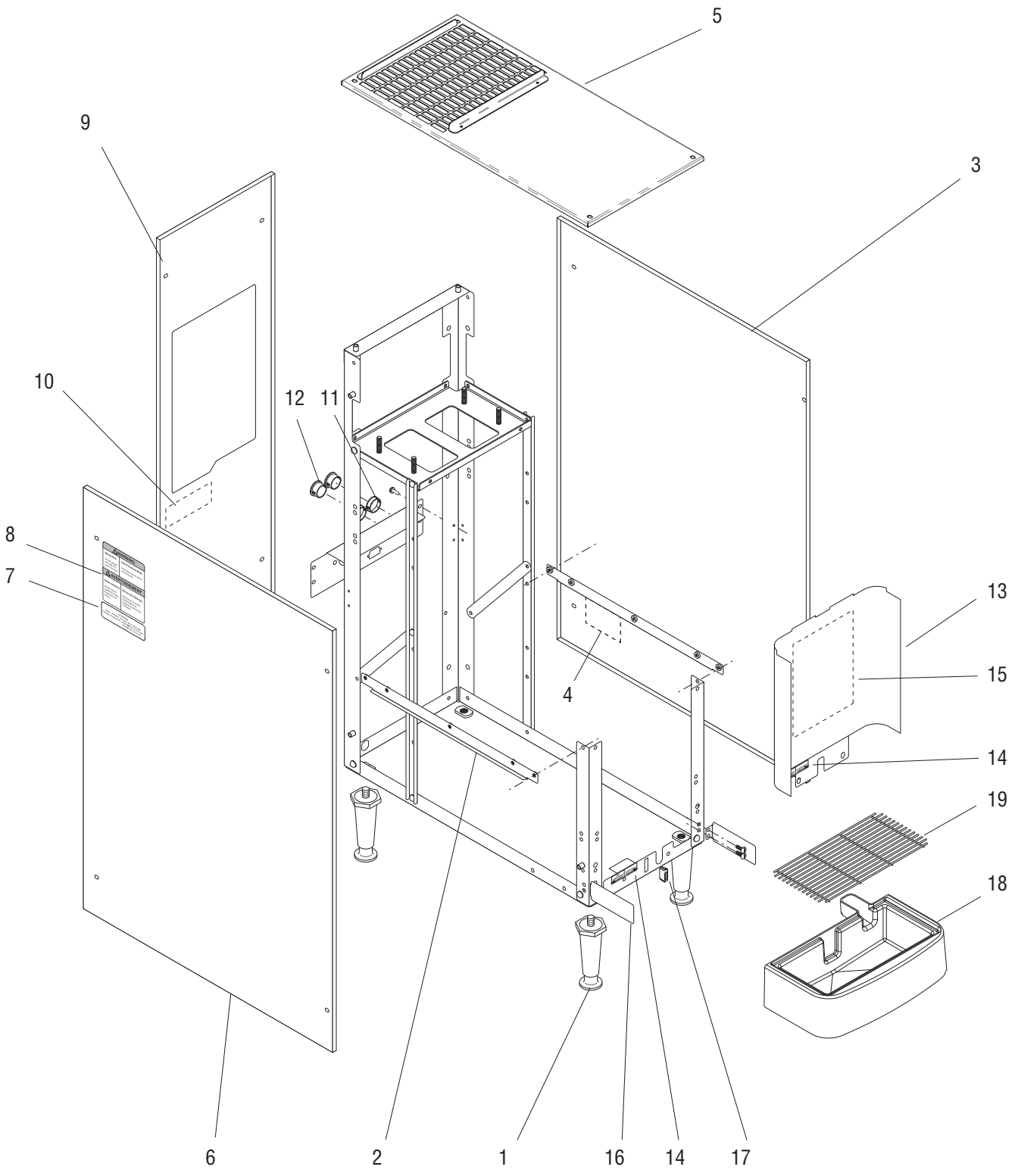
Main Frame & Covers	4
Upper Cabinet & Panels.....	6,8
Refrigeration Components.....	10,12,14,16
Compressor Components.....	18,20,22
Fan Assembly	24
Water Tank Assy.....	26,28,30,32
Circulation Pump & Lines.....	34,36
Product Coil & Lines	38,40
Dispense Platform Assy	42
Dispense Valve Assy.....	44
Plain Water Manifold	46
Door Assy - Unlited	48
Door Assy - Lited w/Mechanical Switches.....	50
Door Assy - Lited w/Bezel & /Membrane Switches.....	52
Door Assy - Lited 2 Segment Display	54
Door Assy - Unlited Push/Hold Membrane Switches.....	56
Door Assy - Lited w/PH or PC Membrane Switches	58
Electrical Components.....	60,62
Refillable Container Assy.....	64
Touchless Sensor Technology Kit.....	66

To search this document electronically, press “control” + “F” (on P.C.) or “command” + “F” on Mac, then type in description or part number, press “enter”.



MAIN FRAME & COVERS

JDF-2S



P3613

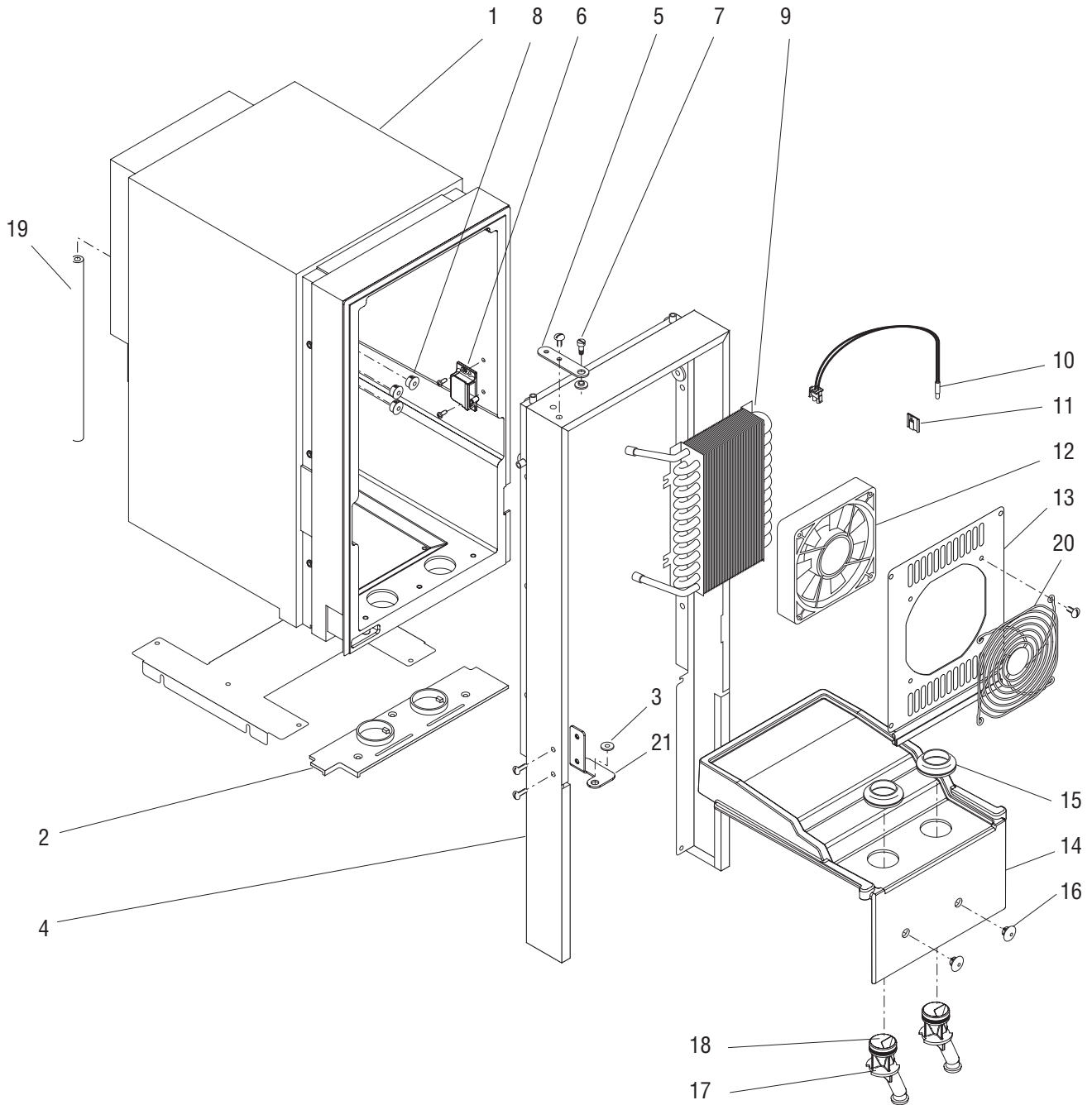
MAIN FRAME & COVERS

ITEM	PART NO.	QTY.	DESCRIPTION
1	26528.0000	4	Leg
	03996.0000	4	Pad, Non-skid
2	38654.0000	1	Bracket, Side
	02308.0000	4	Screw, Pan Head #8-32 x .38"
3	39491.1002	1	Panel w/Decals, Right (Includes item 4)
	02331.0001	4	Screw, Truss Head, Blk #10-32 x .38"
	01532.0000	1	Lockwasher, Int.-tooth .438"
4	00986.7000	1	Decal, Warning - Electrical
5	53916.0001	1	Panel, Top
	02331.0001	4	Screw, Truss Head, Blk #10-32 x .38"
	01532.0000	1	Lockwasher, Int.-tooth .438"
6	39491.1001	1	Panel w/Decals, Left (Includes items 7 & 8)
	02331.0001	4	Screw, Truss Head, Blk #10-32 x .38"
	01532.0000	1	Lockwasher, Int.-tooth .438"
7	33461.0001	1	Decal, Refrigerant Charge (Early Models)
	33461.0013	1	Decal, Refrigerant Charge (Late Models)
8	27442.7000	2	Decal, Warning - Moving Parts
9	42478.1001	1	Panel w/Decals, Rear (Includes item 10)
	02331.0001	4	Screw, Truss Head, Blk #10-32 x .38"
	01532.0000	1	Lockwasher, Int.-tooth .438"
10	00656.0001	1	Decal, Comply To Plumbing Code
11	27354.0000	2	Bushing
12	00668.0000	2	Plug
13	38661.0000	1	Panel, Splash (Also order items 14 & 15)
	02308.0000	2	Screw, Pan Head #8-32 x .38"
14	38950.0000	2	Decal, Dispense/No Dispense
15	44745.0000	1	Schematic, Electrical
16	38617.0001	2	Bracket
	02308.0000	4	Screw, Pan Head #8-32 x .38"
17	21436.0000	1	Catch, Magnetic
18	38765.1000	1	Drip Tray Assy (Includes Strike Plate and item 19)
	44015.1001	1	Drip Tray Assy, Extended (Optional Equipment)
19	26801.0000	1	Grate, Drip Tray



UPPER CABINET & PANELS

JDF-2S



P3614

UPPER CABINET & PANELS

ITEM	PART NO.	QTY.	DESCRIPTION
1	38857.1000	1	Cabinet Assy
	24544.0000	6	Screw, Pan Head #8-18
2	34784.0000	1	Plate, Bottom Closure
	01359.0000	3	Screw, Flat Head #8-32 x .38"
3	34362.0002	1	Bushing, Hinge
4	34790.0002	1	Wrap (Late Models with bolt on door hinge)
	24544.0000	6	Screw, Pan Head #8-1
	02308.0000	4	Screw, Pan Head #8-32 x .38"
5	34785.0001	1	Bracket, Hinge
	02331.0001	2	Screw, Truss Head, Blk #10-32 x .38"
	43951.0000	2	Washer
6	34666.0001	1	Catch, Door Latch
	01388.0000	2	Screw, Truss Head #6 x .75"
7	34741.0001	1	Screw, Shoulder
8	00669.0002	3	Plug
9	34419.0001	1	Coil, Water
	24544.0000	4	Screw, Pan Head #8-18
10	43694.0000	1	Sensor Assy, Temperature
11	33669.0000	1	Clip, Adhesive Back
12	33297.0000	1	Fan Assy.
	38616.0000	2	Screw, Hex Head #10-24
13	34421.0001	1	Cover, Fan
	24544.0000	4	Screw, Pan Head #8-18
14	34422.0003	1	Shelf, Product
15	32461.0000	2	Gasket, Drip
16	27394.0000	2	Plug
17	35930.0000	2	Nozzle
	49819.1000	-	Nozzle, Quick Stop, White (Optional)(Qty-1, Includes item 18 & 22)
	49819.1001	-	Nozzle, Quick Stop, Black (Optional)(Qty-1, Includes item 18 & 22)
	49819.1002	-	Nozzle Kit, Quick Stop, White (Set of 2, Includes item 18 & 22)
	49819.1003	-	Nozzle Kit, Quick Stop, Black (Set of 2, Includes item 18 & 22)
18	32848.0000	4	O-ring (Also order item 22)

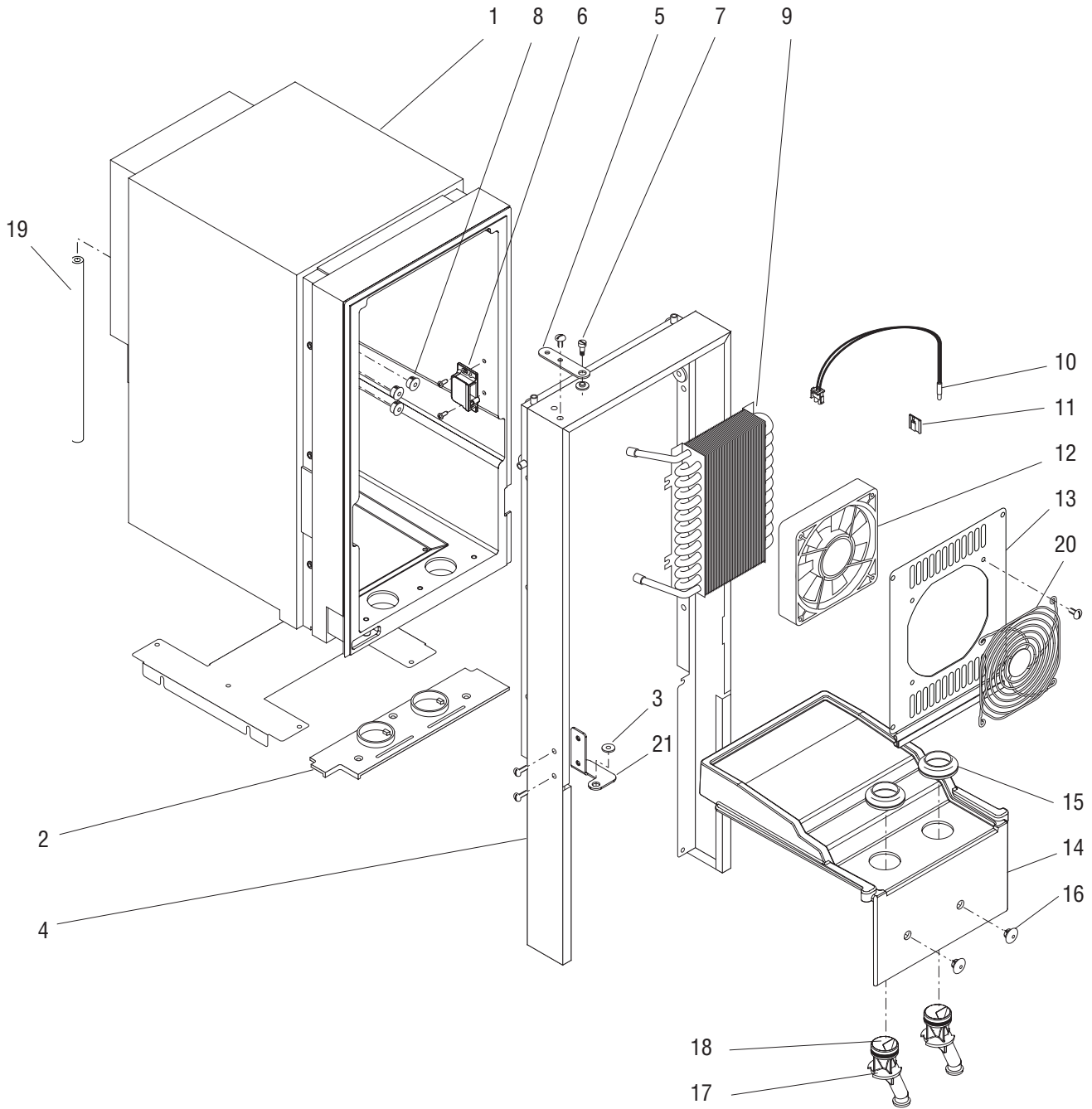
(Continued)



UPPER CABINET & PANELS

JDF-2S

(Continued)



P3614

UPPER CABINET & PANELS

ITEM	PART NO.	QTY.	DESCRIPTION
19		1	Tube, Silicone .25"ID x 9.0" (Order item 23)
20	34010.0001	1	Guard, Fan
	34010.0002	1	Guard, Fan (Salt Air Resistant)
	38616.0000	2	Screw, Hex Head #10-24
21	41385.0000	1	Bracket (Late Models with bolt on door hinge)
	02308.0000	2	Screw, Pan Head #8-32 x .38"
22	44023.1000	-	Lube, Silicone Haynes 1.0 oz Tube (Use when assembling item 18)
23	11707.1000	-	Tube, Silicone .25"ID x 12.0" (Use as required)

REFRIGERATION COMPONENTS (LATE MODELS w/ CUBIGEL B38G5L COMPRESSOR)

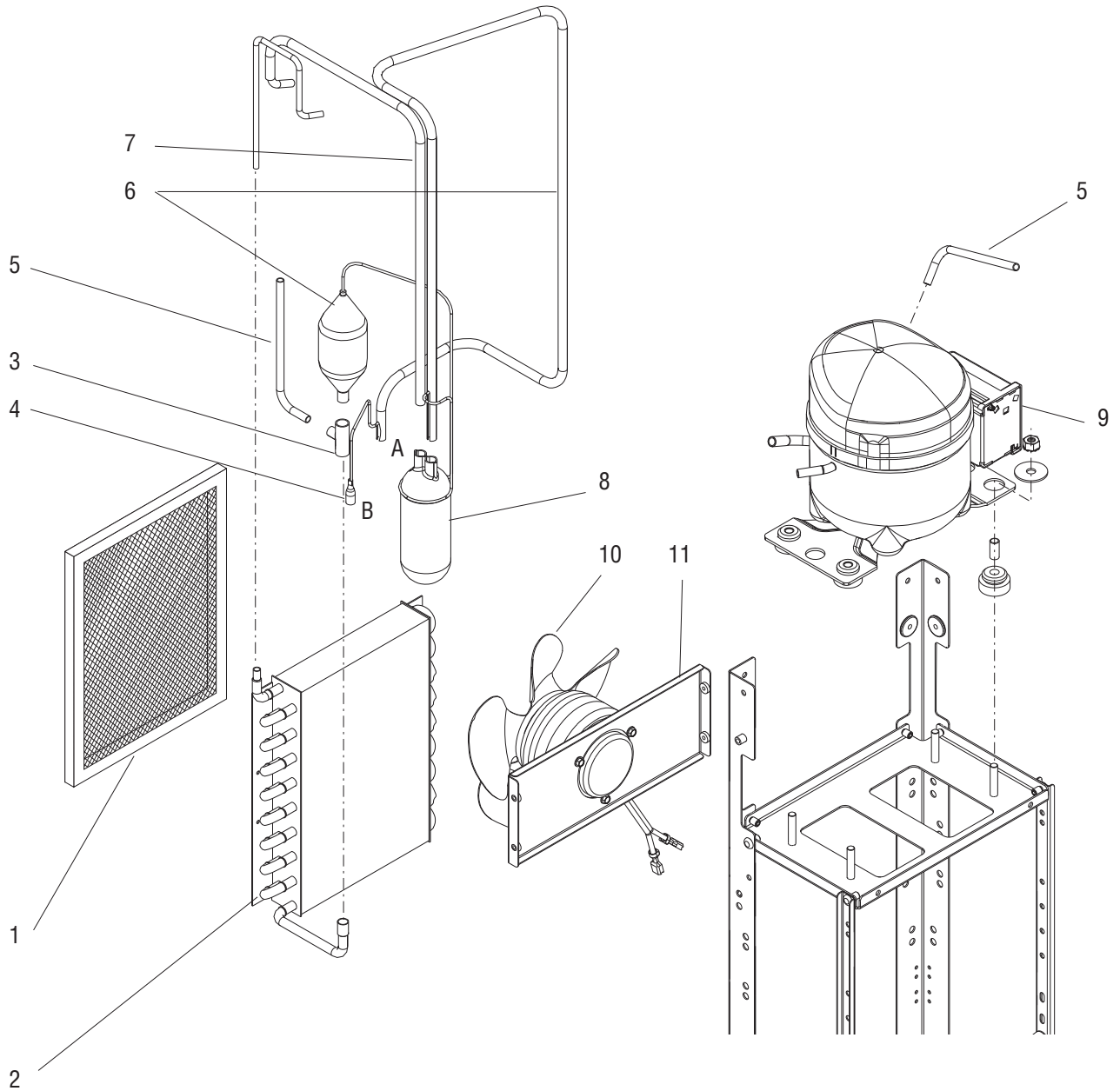
ITEM	PART NO.	QTY.	DESCRIPTION
1	35164.1001	1	Air Filter Assy (Includes item 13)
2	29951.0004	1	Condenser
	02335.0001	4	Screw, Crimptite #8 x .38"
3	00396.0002	1	Tee (Requires brazing to install)
4	35178.0000	1	Adapter (Requires brazing to install)
5	38937.0000	2	Tube (Requires brazing to install)
6	35175.1002	1	Filter Dryer Assy (Requires brazing to install)
7	32776.0000	1	Accumulator
8	-----	1	Compressor (See COMPRESSOR COMPONENTS)
	23700.0000	4	Nut .25"-20
9	-----	1	Fan Assy (See FAN ASSEMBLY)
	27243.0000	3	Screw #8-36 x .437"
10	52454.0003	1	Guard, Wire Form
	02335.0001	3	Screw, Crimptite #8 x .38"
11	M2546.1000	-	Tape, Tube Insulating (Use as required)
12	M2336.1000	-	Insulation, Tube 25/50 - 0.25"ID x .19" wall x 6.0 Ft (Use as required)
13	12467.1002	-	Velcro, Loop 3.5" (4 pieces)
	12468.1002	-	Velcro, Hook 3.5" (4 pieces)

} Not Illustrated



REFRIGERATION COMPONENTS (LATE MODELS w/ CUBIGEL GD40ME COMPRESSOR)

JDF-2S



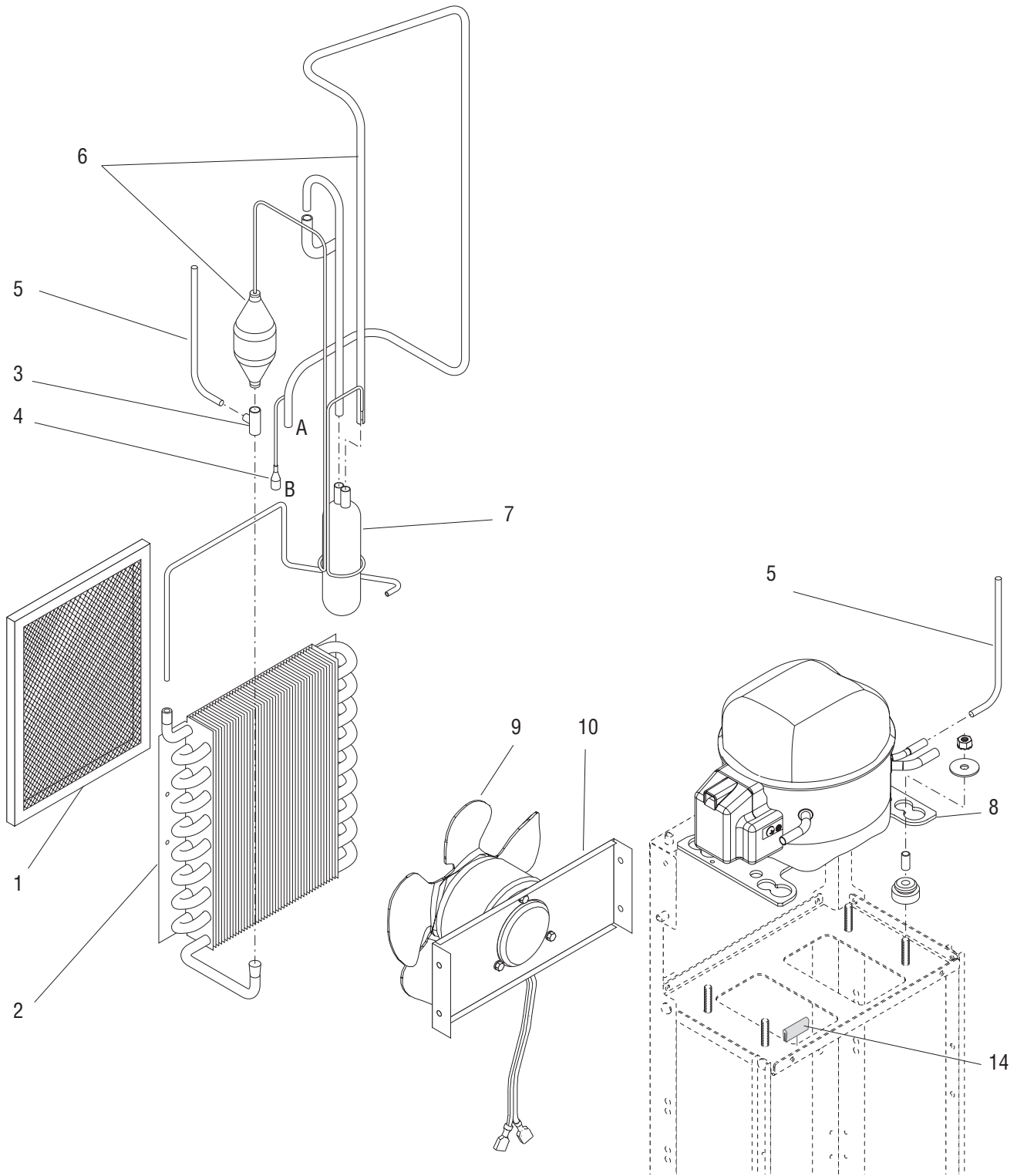
NOTE: Letters appearing within this illustration correspond to matching connections in other illustrations.

REFRIGERATION COMPONENTS (LATE MODELS w/ CUBIGEL GD40ME COMPRESSOR)

ITEM	PART NO.	QTY.	DESCRIPTION
1	35164.1001	1	Air Filter Assy (Includes item 14)
2	29951.0004	1	Condenser
	02335.0001	4	Screw, Crimptite #8 x .38"
3	00396.0002	1	Tee (Requires brazing to install)
4	35178.0000	1	Adapter (Requires brazing to install)
5	38937.0000	2	Tube (Requires brazing to install)
6	35175.1002	1	Filter Dryer Assy (Requires brazing to install)
7	51997.0000	1	Tube (Requires brazing to install)
8	32776.0000	1	Accumulator
9	-----	1	Compressor (See COMPRESSOR COMPONENTS)
	23700.0000	4	Nut .25"-20
10	-----	1	Fan Assy (See FAN ASSEMBLY)
	27243.0000	3	Screw #8-36 x .437"
11	34418.0001	1	Bracket
	02308.0000	4	Screw, Pan Head #8-32 x .38"
12	M2546.1000	-	Tape, Tube Insulating (Use as required)
13	M2336.1000	-	Insulation, Tube 25/50 - 0.25"ID x .19" wall x 6.0 Ft (Use as required)
14	12467.1002	-	Velcro, Loop 3.5" (4 pieces)
	12468.1002	-	Velcro, Hook 3.5" (4 pieces)
			} Not Illustrated

REFRIGERATION COMPONENTS (EARLY MODELS w/ CUBIGEL COMPRESSOR)

ITEM	PART NO.	QTY.	DESCRIPTION
1	35164.1001	1	Air Filter Assy (Includes item 13)
2	29951.0004	1	Condenser
	02335.0001	4	Screw, Crimptite #8 x .38"
3	00396.0002	1	Tee (Requires brazing to install)
4	35178.0000	1	Adapter (Requires brazing to install)
5	38937.0000	1	Tube (Requires brazing to install)
6	35175.1002	1	Filter Dryer Assy (Requires brazing to install)
7	32776.0000	1	Accumulator
8	-----	1	Compressor (See COMPRESSOR COMPONENTS)
	00901.0000	4	Nut .25"-20
9	-----	1	Fan Assy (See FAN ASSEMBLY)
	27243.0000	3	Screw #8-36 x .437"
10	34418.0001	1	Bracket
	02308.0000	4	Screw, Pan Head #8-32 x .38"
11	M2546.1000	-	Tape, Tube Insulating (Use as required)
12	M2336.1000	-	Insulation, Tube 25/50 - 0.25"ID x .19" wall x 6.0 Ft (Use as required)
13	12467.1002	-	Velcro, Loop 3.5" (4 pieces)
	12468.1002	-	Velcro, Hook 3.5" (4 pieces)
			} Not Illustrated

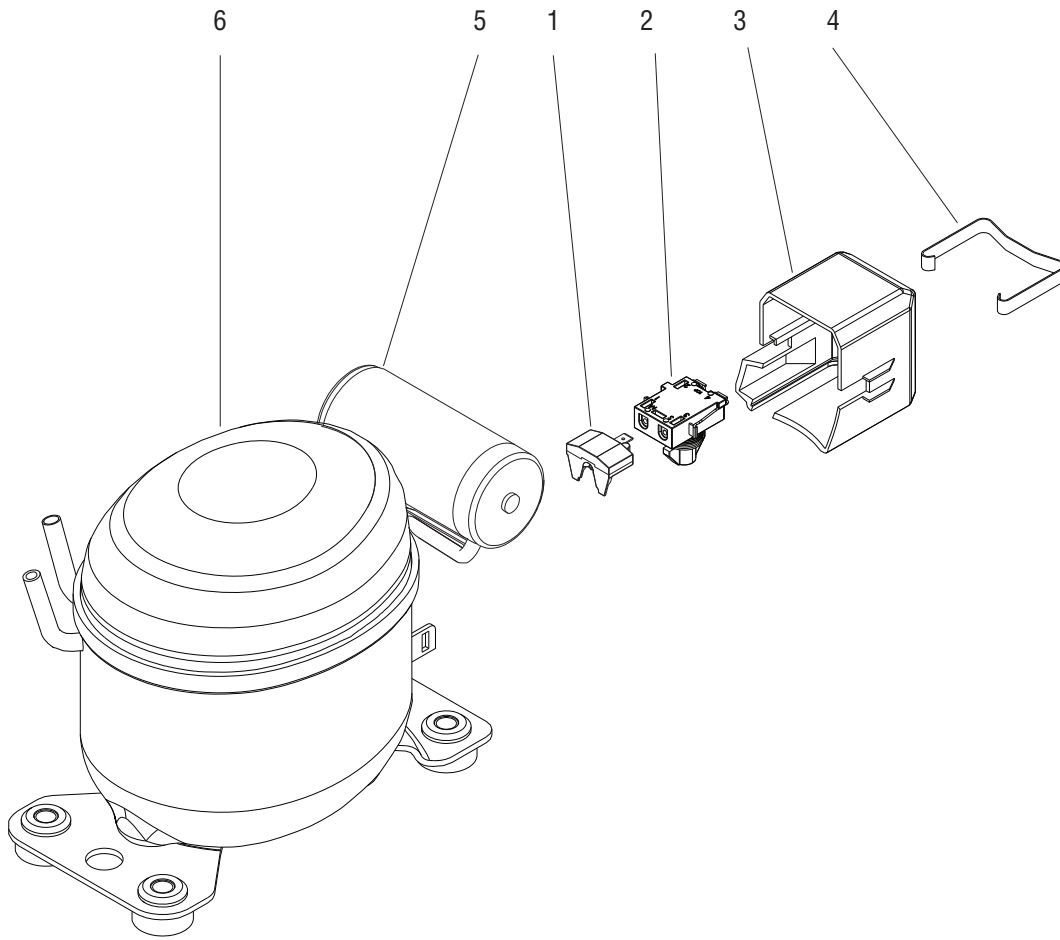


P4297

NOTE: Letters appearing within this illustration correspond to matching connections in other illustrations.

REFRIGERATION COMPONENTS (LG COMPRESSOR)

ITEM	PART NO.	QTY.	DESCRIPTION
1	35164.1001	1	Air Filter Assy (Includes item 13)
2	29951.0004	1	Condenser
	29951.0005	1	Condenser (Salt Air Resistant)
	02335.0001	4	Screw, Crimpite #8 x .38"
3	00396.0002	1	Tee (Requires brazing to install)
4	35178.0000	1	Adapter (Requires brazing to install)
5	38937.0000	2	Tube (Requires brazing to install)
6	35175.1002	1	Filter Dryer Assy (Requires brazing to install)
7	32776.0000	1	Accumulator
8	-----	1	Compressor (See COMPRESSOR COMPONENTS)
	00901.0000	4	Nut .25"-20
9	-----	1	Fan Assy (See FAN ASSEMBLY)
	27243.0000	3	Screw #8-36 x .437"
10	34418.0001	1	Bracket
	02308.0000	4	Screw, Pan Head #8-32 x .38"
11	M2546.1000	-	Tape, Tube Insulating (Use as required)
12	M2336.1000	-	Insulation, Tube 25/50 - 0.25"ID x .19" wall x 6.0 Ft (Use as required)
13	12467.1002	-	Velcro, Loop 3.5" (4 pieces)
	12468.1002	-	Velcro, Hook 3.5" (4 pieces)
			} Not Illustrated
14		1	Edging 1.0" (Order item 15)
15	41105.1000	-	Edging, 12.0" (Use as required)

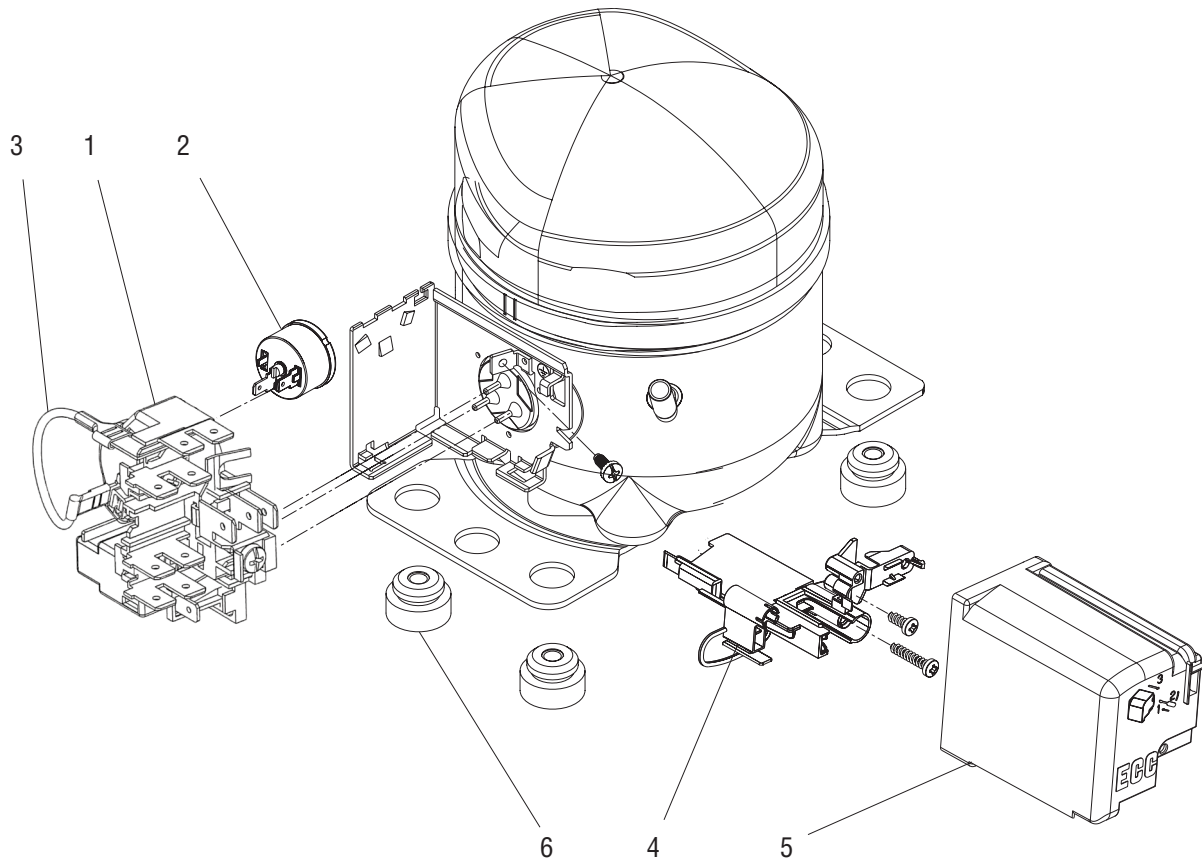


COMPRESSOR COMPONENTS (CUBIGEL B38G5L)

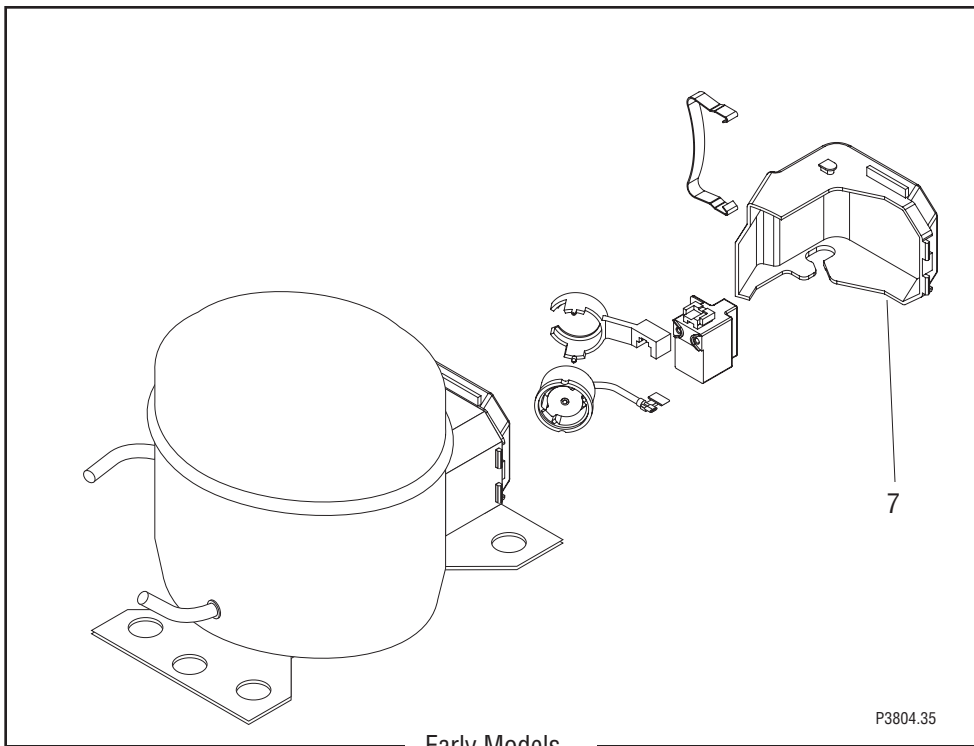
ITEM	PART NO.	QTY.	DESCRIPTION
1	53852.0000	1	Relay, Compressor 120V
2	53851.0000	1	Overload Protector 120V
3	53847.0000	1	Cover
4	53848.0000	1	Clip
5	53849.0000	1	Capacitor
6	53850.1000	1	Kit, JDF-2S Compressor (B38G5L) Replacement 120V (Kit replaces either an LG NS36 or CUBIGEL GD40)

The following items are not illustrated

7	52243.0000	1	Wiring Harness, B38G5L Compressor/Cap Extension
---	------------	---	---



P4040.30

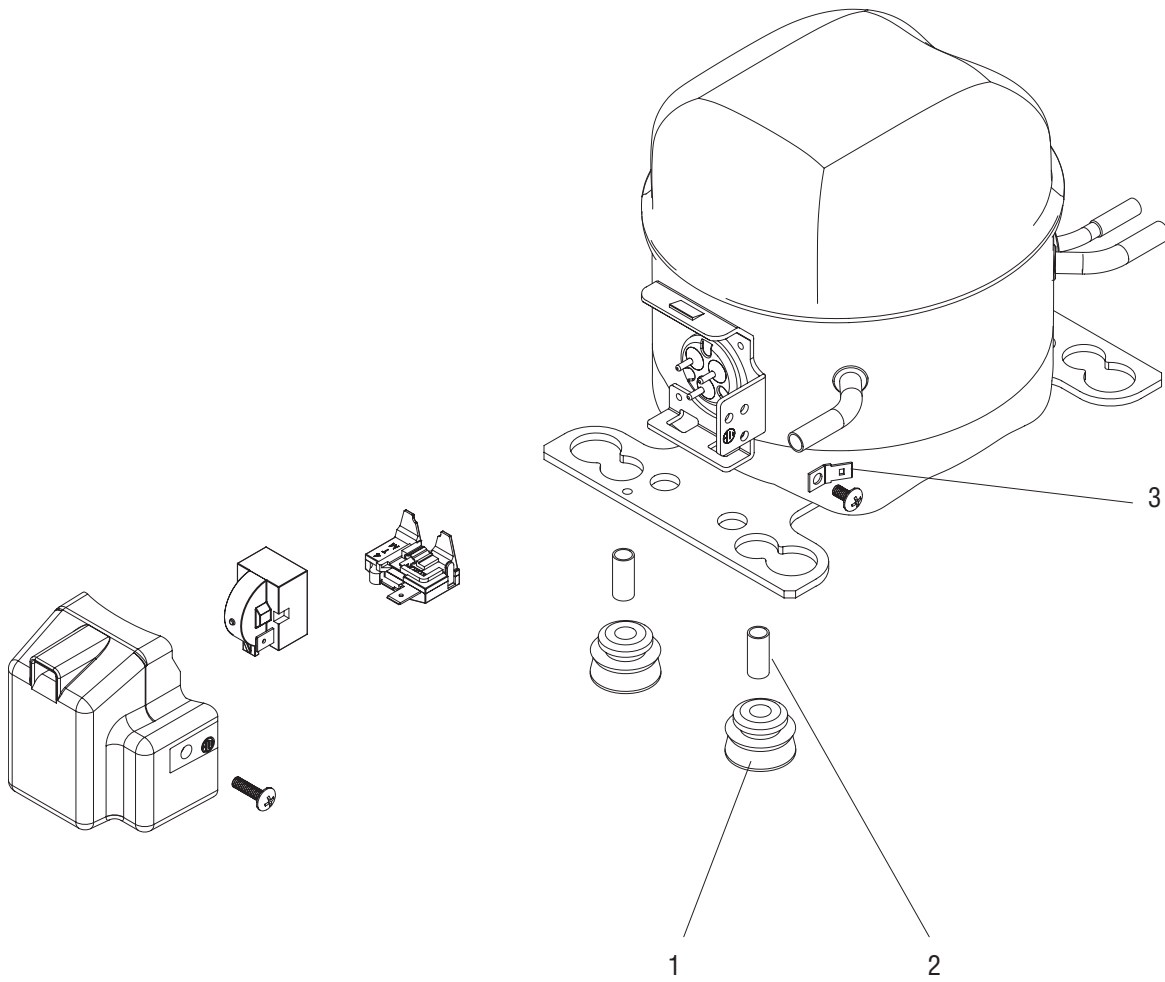


P3804.35

Early Models

COMPRESSOR COMPONENTS (CUBIGEL GD40ME)

ITEM	PART NO.	QTY.	DESCRIPTION
1	39912.0002	1	Relay, Compressor 120V
	39912.0003	1	Relay, Compressor 230V
2	39908.0002	1	Overload Protector 120V
	39908.0003	1	Overload Protector 230V
3	41398.0000	1	Cable
4	41397.0000	1	Strain Relief
5	39907.0000	1	Cover
6	41396.0000	1	Mounting Kit (Includes 4 Grommets and Sleeves)
7	38896.0000	1	Cover



P4298.30

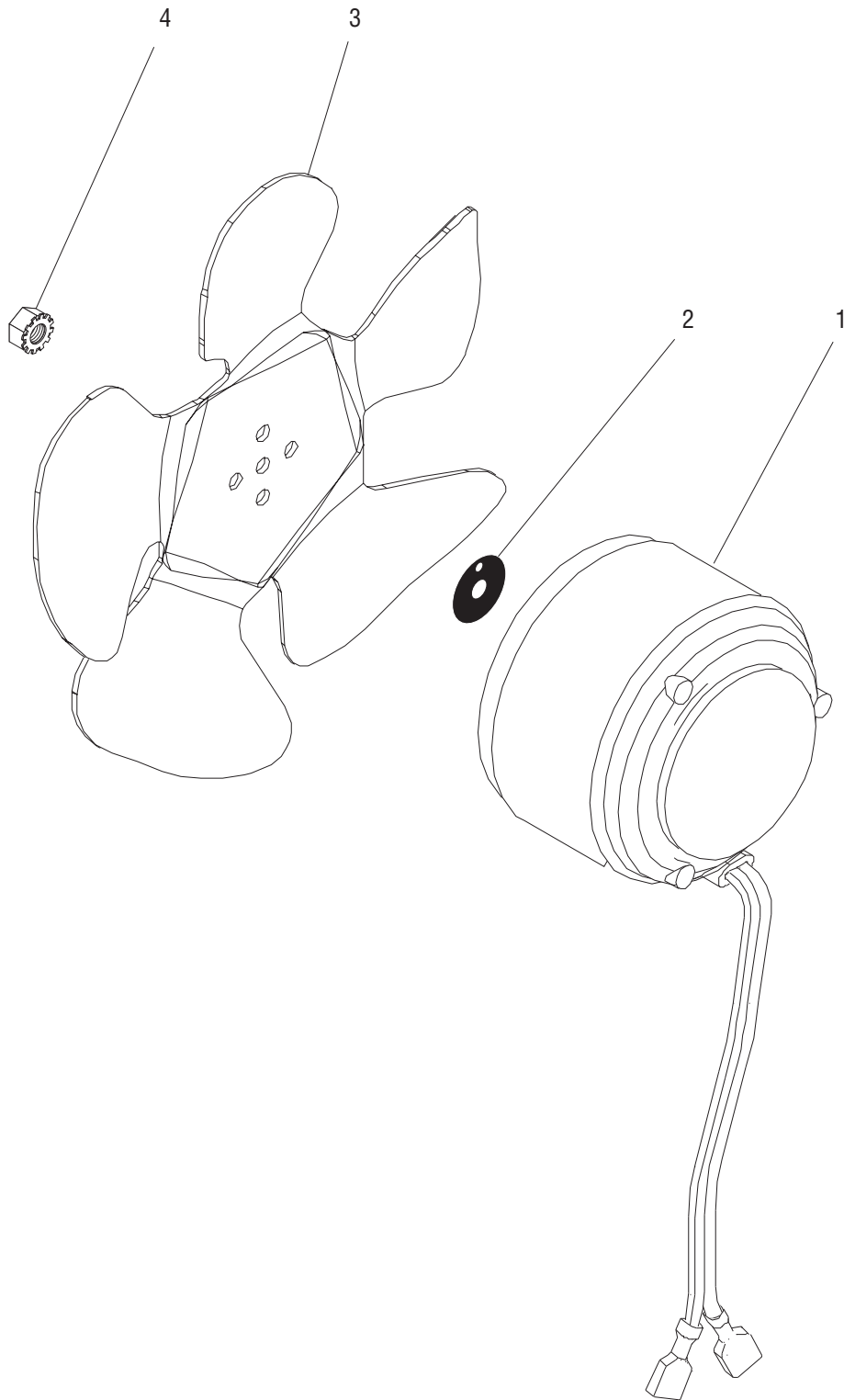
COMPRESSOR COMPONENTS (LG)

ITEM	PART NO.	QTY.	DESCRIPTION
-	45901.1000	1	Compressor 120V (Includes items 1 - 3)
	45901.1001	1	Compressor 230V (Includes items 1 - 3)
1	45897.0000	4	Grommet
2	45896.0000	4	Sleeve
3	36528.0000	1	Terminal Adapter
	39142.0000	1	Screw, Truss Head M4 x 7mm



FAN ASSEMBLY

JDF-2S



P2704

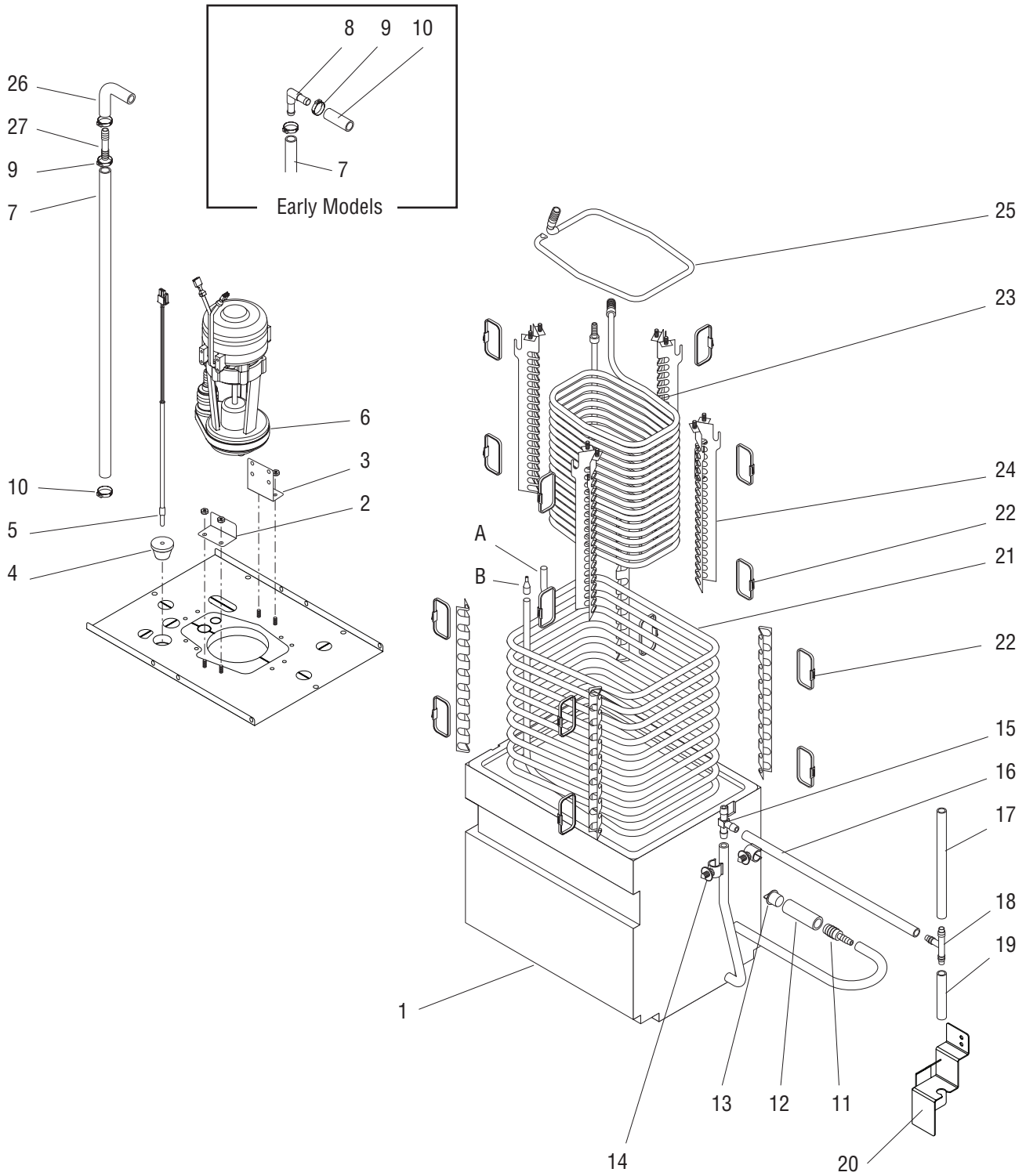
FAN ASSEMBLY

ITEM	PART NO.	QTY.	DESCRIPTION
-	32204.1006	1	Fan Assy 120V (Includes items 1-4)
	32204.1007	1	Fan Assy 230V (Includes items 1-4)
1	33603.0003	1	Motor Assy 120V
	33603.0004	1	Motor Assy 230V
2	33602.0000	1	Blade, Fan
3	27258.0000	1	Silencer
4	23700.0000	1	Nut .25"-20



WATER TANK ASSY (EARLY MODELS)

JDF-2S



NOTE: Letters appearing within this illustration correspond to matching connections in other illustrations.

P3616

WATER TANK ASSY (EARLY MODELS)

ITEM	PART NO.	QTY.	DESCRIPTION
1	35165.1003	1	Tank Assy
	24544.0000	6	Screw, Pan Head #8-18
2	38833.0001	1	Bracket
	00973.0001	2	Nut, Keps #6-32
3	38833.0000	1	Bracket
	00973.0001	2	Nut, Keps #6-32
4	33801.0003	1	Grommet
5	28891.1000	1	Probe, Temperature
6	53761.1000	1	Kit, Recirc Pump 120/230VAC - Seald Brng 9Includes Item 2 & 3)
		1	Bracket, Mounting
		1	Bracket, Support
		4	Screw,8-36x.437 Thread Forming
7		1	Hose, Flex .38" ID x .625" OD x 20.0" (Early Models) (Order item 30)
		1	Hose, Flex .38" ID x .625" OD x 18.0" (Late Models) (Order item 30)
8	37850.0000	1	Elbow .38" Barb
9	21275.0003	3	Clamp .57" - .70"
10		1	Hose, Flex .38" ID x .625" OD x 1.50" (Order item 30)
11	38924.0000	1	Reducer .50 to .25" Barb
12		1	Hose, Flex .38" ID x .625" OD x 3.0" (Order item 32)
13	38925.0000	1	Plug
14	27410.0000	3	Clip, Tube Mounting
15	38605.0000	1	Tee .25" Barb
16		1	Tube, Silicone .25" ID x 8.0" (Order item 31)
17		1	Tube, Silicone .25" ID x 6.75" (Order item 31)
18	38605.0000	1	Tee .25" Barb
19		1	Tube, Silicone .25" ID x 3.0" (Order item 31)
20	38662.0001	1	Bracket
	02308.0000	2	Screw, Pan Head #8-32 x .38"
21	47581.0000	1	Evaporator Coil Assy (Includes item 22)
22	36329.0002	20	Cable Tie
23	38828.1000	1	Product Coil (Order item 33)
24	34416.0000	4	Spacer

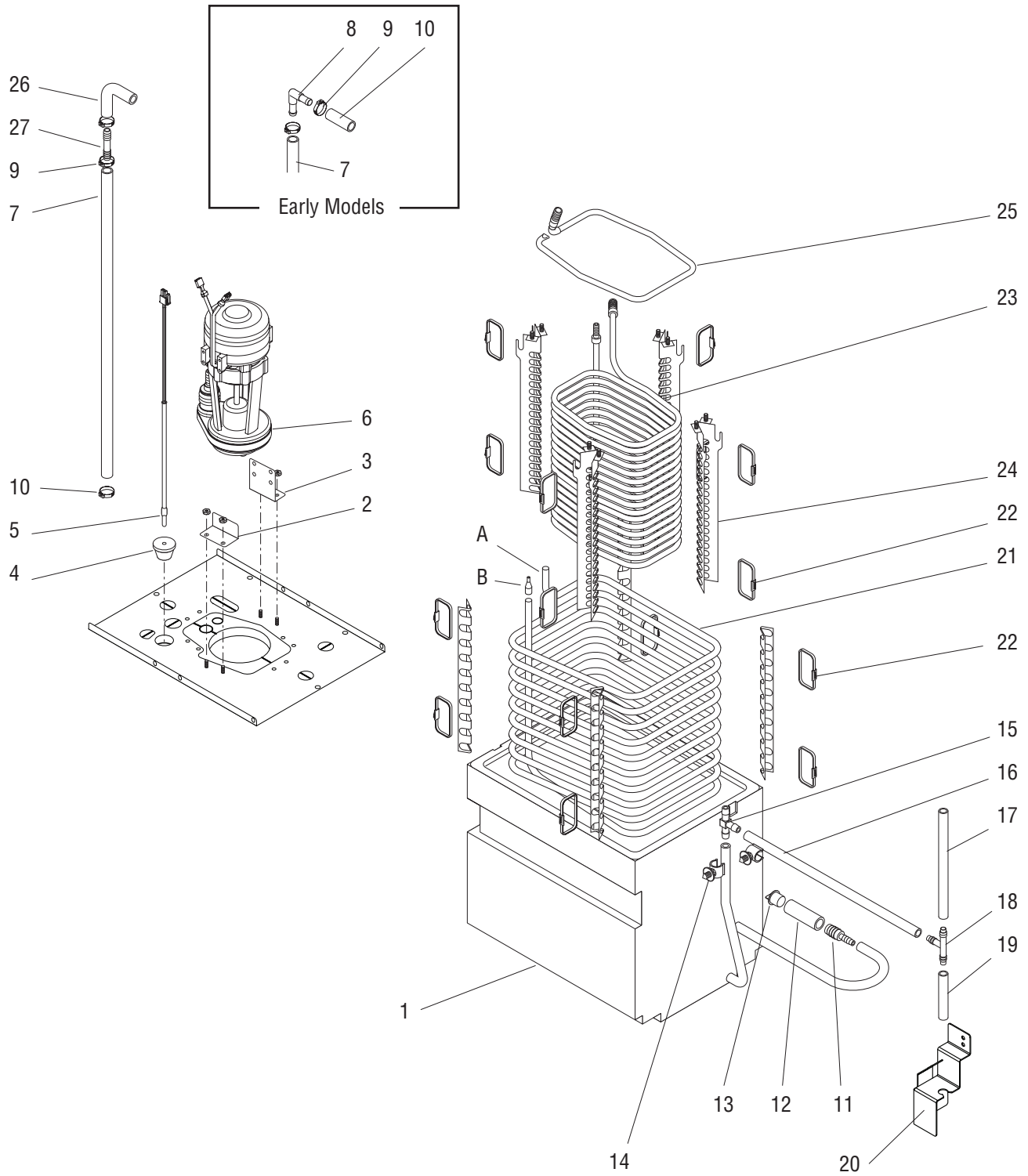
(Continued)



WATER TANK ASSY (EARLY MODELS)

JDF-2S

(Continued)



NOTE: Letters appearing within this illustration correspond to matching connections in other illustrations.

P3616

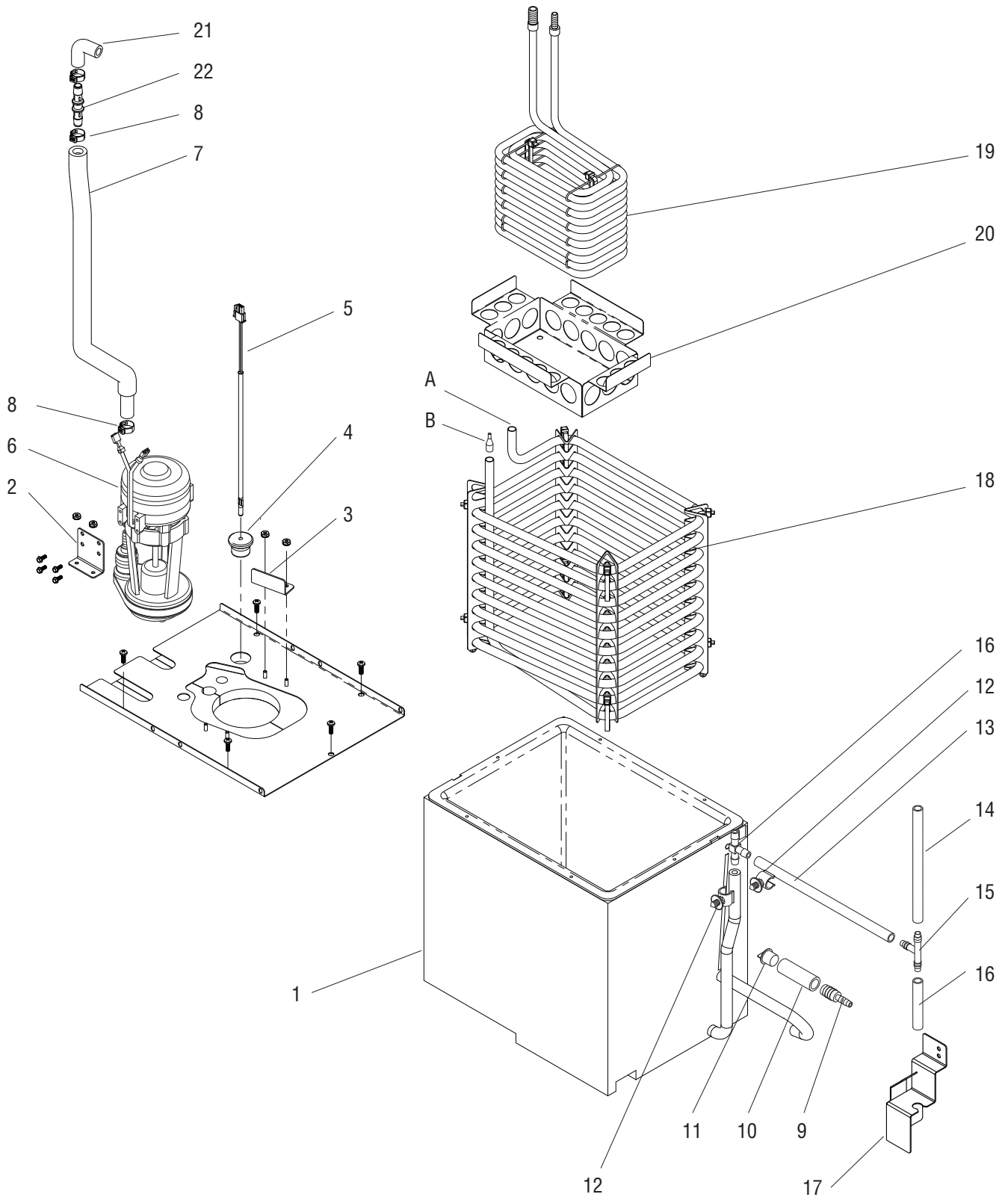
WATER TANK ASSY (EARLY MODELS)

ITEM	PART NO.	QTY.	DESCRIPTION
25	38829.0000	1	Manifold, Return Water
26	45928.0000	1	Elbow
27	34644.0000	1	Connector .38" Barb
28	M2337.1000	-	Insulation, Tube 25/50 .50" ID x 72.0" (Cut to required length)
29	M2336.1000	-	Insulation, Tube 25/50 .38" ID x 72.0" (Cut to required length)
30	45848.1000	-	Hose, Flex .38" ID x .625" OD x 12.0" (Cut to required length)
	45848.1001	-	Hose, Flex .38" ID x .625" OD x 36.0" (Cut to required length)
	45848.1002	-	Hose, Flex .38" ID x .625" OD x 120.0" (Cut to required length)
31	11707.1000	-	Hose, Silicone .25" ID x .625" OD x 12.0" (Cut to required length)
	11707.1001	-	Hose, Silicone .25" ID x .625" OD x 36.0" (Cut to required length)
	11707.1002	-	Hose, Silicone .25" ID x .625" OD x 120.0" (Cut to required length)
32	32591.1001	-	Hose, Silicone .50" ID x .625" OD x 12.0" (Cut to required length)
	32591.1002	-	Hose, Silicone .50" ID x .625" OD x 36.0" (Cut to required length)
33	38943.1000	-	Product Coil Assy (Includes items 23 - 26)



WATER TANK ASSY (LATE MODELS)

JDF-2S



NOTE: Letters appearing within this illustration correspond to matching connections in other illustrations.

P4363.50

WATER TANK ASSY (LATE MODELS)

ITEM	PART NO.	QTY.	DESCRIPTION
1	35165.1003	1	Tank Assy
	24544.0000	6	Screw, Pan Head #8-18
2	38833.0001	1	Bracket
	00973.0001	2	Nut, Keps #6-32
3	38833.0000	1	Bracket
	00973.0001	2	Nut, Keps #6-32
4	33801.0003	1	Grommet
5	28891.1000	1	Probe, Temperature
6	53761.1000	1	Kit, Recirc Pump 120/230VAC - Seald Brng (Includes Item 2 & 3)
		1	Bracket, Mounting
		1	Bracket, Support
		4	Screw,8-36x.437 Thread Forming
7		1	Hose, Flex .38" ID x .625" OD x 18.0" (Order item 26)
8	21275.0003	3	Clamp .57" - .70"
9	38924.0000	1	Reducer .50 to .25" Barb
10		1	Hose, Flex .38" ID x .625" OD x 3.0" (Order item 28)
11	38925.0000	1	Plug
12	27410.0000	2	Clip, Tube Mounting
13		1	Tube, Silicone .25" ID x 8.0" (Order item 27)
14		1	Tube, Silicone .25" ID x 6.25" (Order item 27)
15	38605.0000	2	Tee .25" Barb
16		1	Tube, Silicone .25" ID x 2.6" (Order item 27)
17	38662.0001	1	Bracket
	02308.0000	2	Screw, Pan Head #8-32 x .38"
18	47581.0000	1	Evaporator Coil Assy (Includes spacers & ties)
19	51522.0001	1	Product Coil Assy (Includes wire form & ties)
20	50548.0002	1	Baffle
21	45928.0000	1	Elbow
22	51902.0000	1	Connector .38" Barb

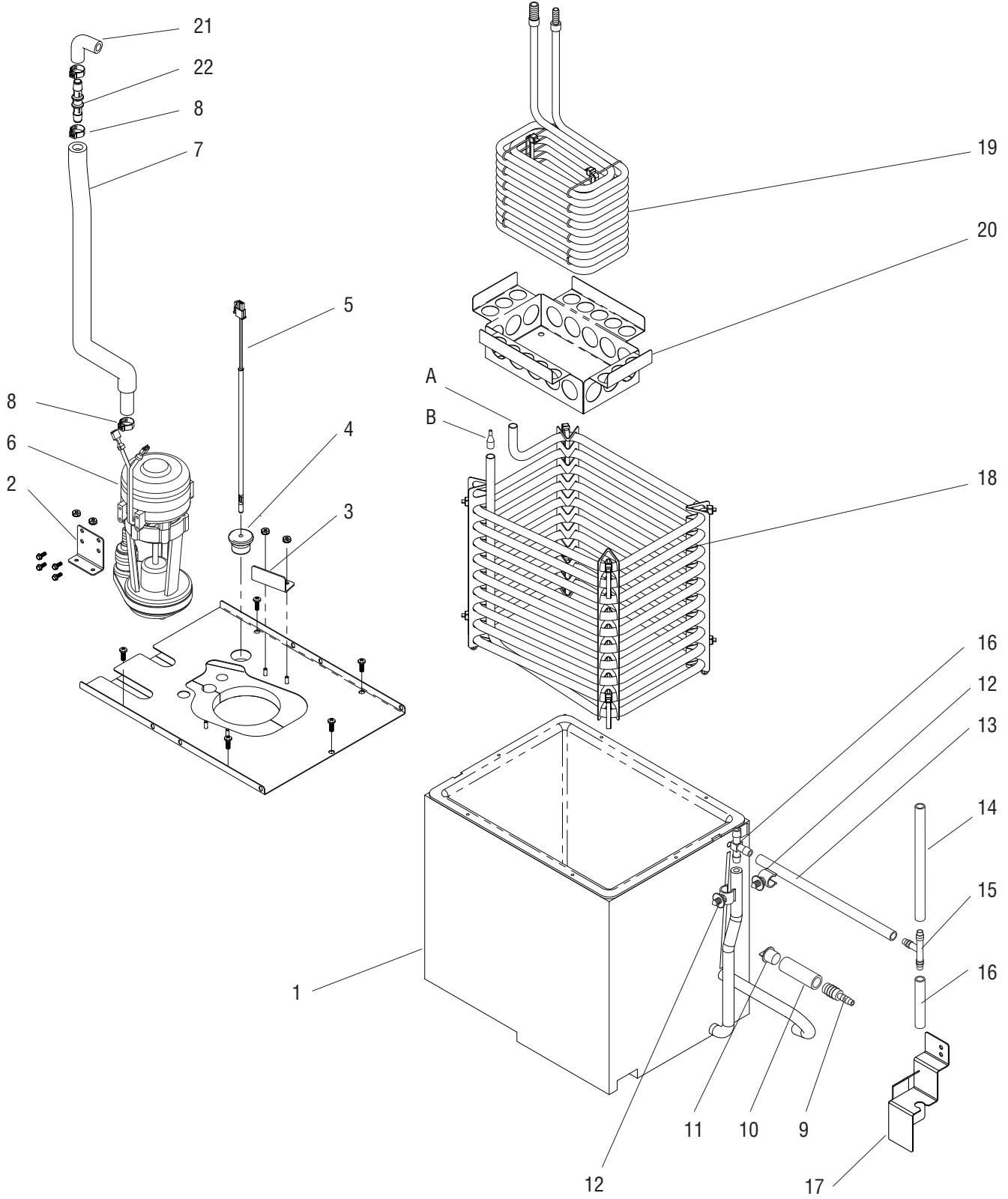
(Continued)



WATER TANK ASSY (LATE MODELS)

JDF-2S

(Continued)

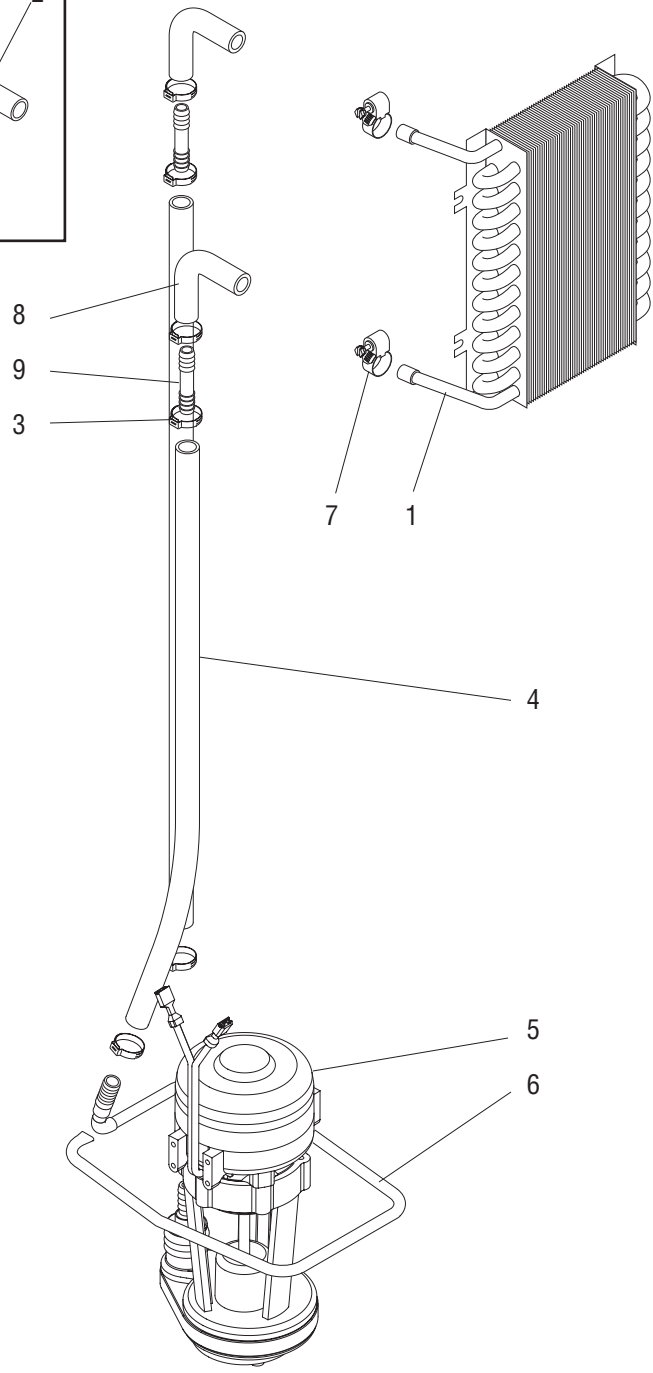
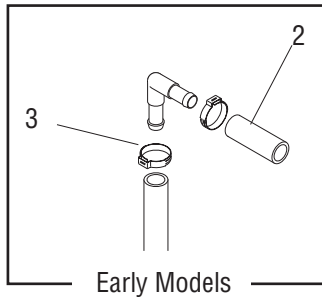


P4363.50

NOTE: Letters appearing within this illustration correspond to matching connections in other illustrations.

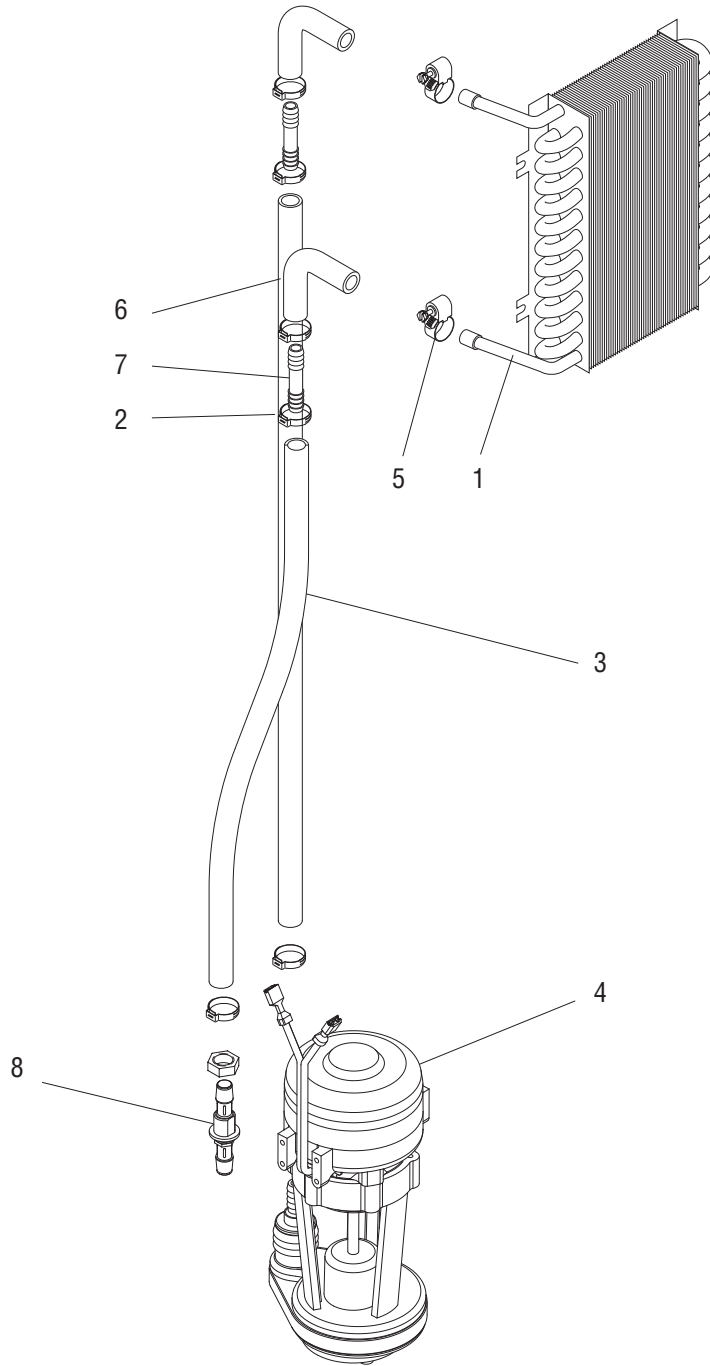
WATER TANK ASSY (LATE MODELS)

ITEM	PART NO.	QTY.	DESCRIPTION
23	M2337.1000	-	Insulation, Tube 25/50 .50" ID x 72.0" (Cut to required length)
24	M2336.1000	-	Insulation, Tube 25/50 .38" ID x 72.0" (Cut to required length)
25	M2546.1000	-	Tape, Tube Insulating (Use as required)
26	45848.1000	-	Hose, Flex .38" ID x .625" OD x 12.0" (Cut to required length)
	45848.1001	-	Hose, Flex .38" ID x .625" OD x 36.0" (Cut to required length)
	45848.1002	-	Hose, Flex .38" ID x .625" OD x 120.0" (Cut to required length)
27	11707.1000	-	Hose, Silicone .25" ID x .625" OD x 12.0" (Cut to required length)
	11707.1001	-	Hose, Silicone .25" ID x .625" OD x 36.0" (Cut to required length)
	11707.1002	-	Hose, Silicone .25" ID x .625" OD x 120.0" (Cut to required length)
28	32591.1001	-	Hose, Silicone .50" ID x .625" OD x 12.0" (Cut to required length)
	32591.1002	-	Hose, Silicone .50" ID x .625" OD x 36.0" (Cut to required length)



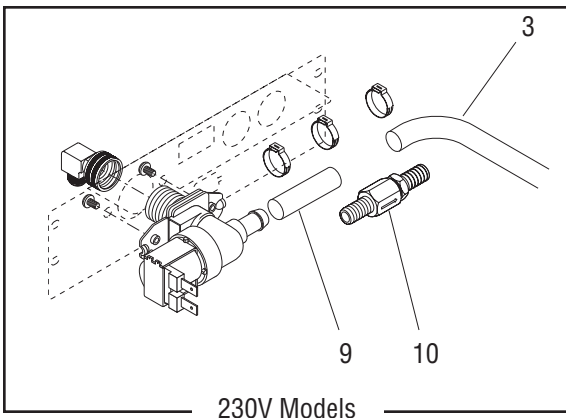
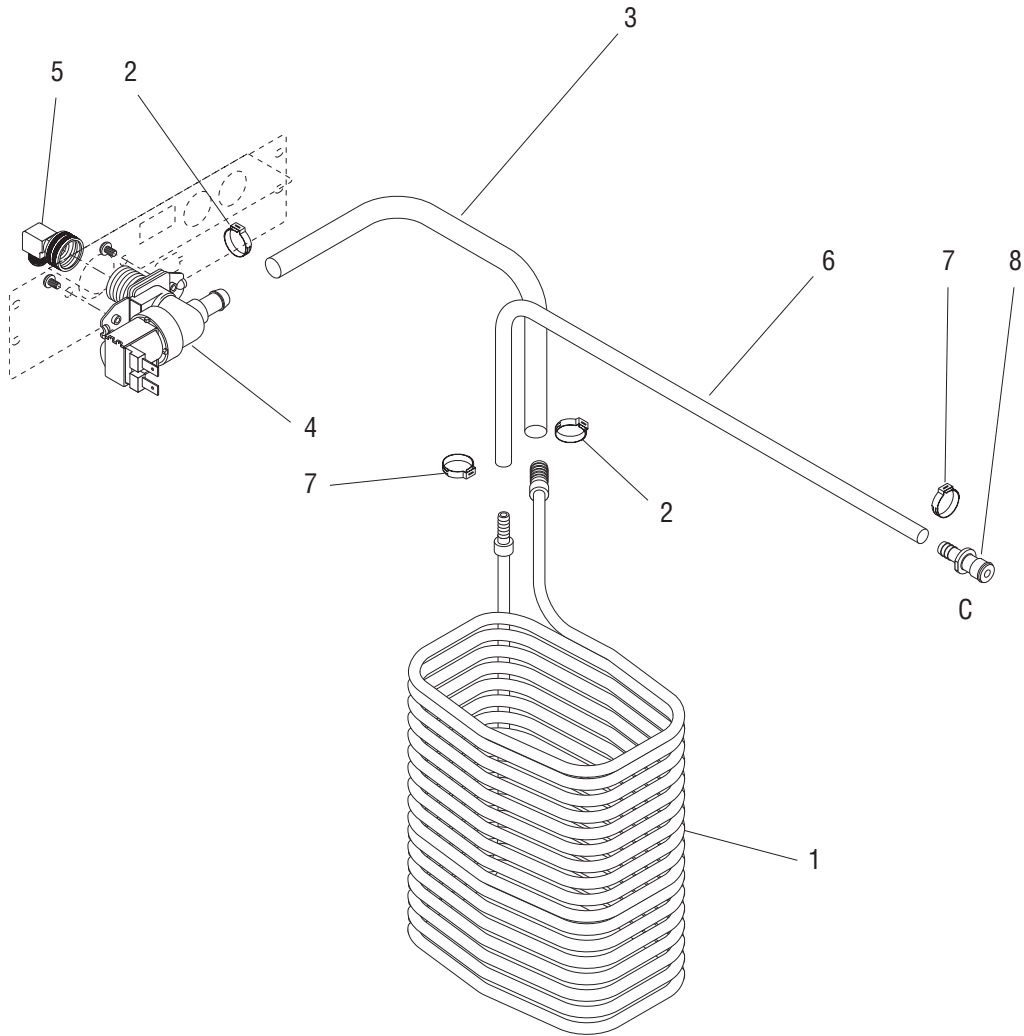
CIRCULATION PUMP & LINES (EARLY MODELS)

ITEM	PART NO.	QTY.	DESCRIPTION
1	-----	1	Coil, Upper Cabinet (See UPPER CABINET & PANELS)
2		1	Tube, Silicone .38" ID x 1.5" (Order item 11)
3	21275.0003	4	Clamp .57" - .70"
4		1	Tube, Silicone .38" ID x 17.0" (Order item 11)
5	-----	1	Pump, Circulation (See WATER TANK ASSEMBLY)
6	-----	1	Manifold, Return Water (See WATER TANK ASSEMBLY)
7	29421.0000	2	Clamp, Hose Worm Drive .625/.75" (Early Models)
	12422.0001	2	Clamp (Late Models)
8	45928.0000	1	Elbow
9	34644.0000	1	Connector .38" Barb
10	M2336.1000	-	Insulation, Tube 25/50 .38" ID x 72.0" (Cut to required length)
11	45848.1000	-	Hose, Flex .38" ID x .625" OD x 12.0" (Cut to required length)
	45848.1001	-	Hose, Flex .38" ID x .625" OD x 36.0" (Cut to required length)
	45848.1002	-	Hose, Flex .38" ID x .625" OD x 120.0" (Cut to required length)



CIRCULATION PUMP & LINES (LATE MODELS)

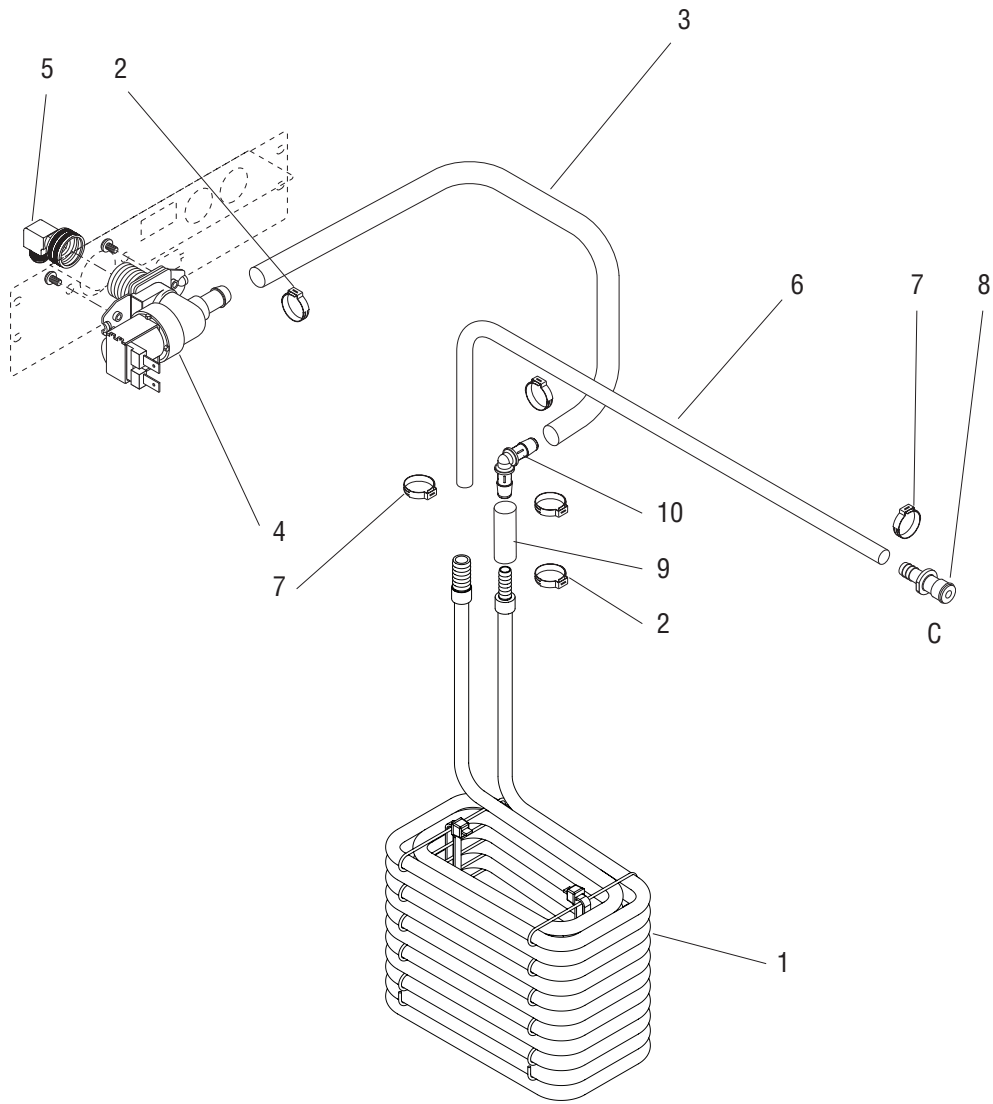
ITEM	PART NO.	QTY.	DESCRIPTION
1	-----	1	Coil, Upper Cabinet (See UPPER CABINET & PANELS)
2	21275.0003	3	Clamp .57" - .70"
3		1	Tube, Silicone .38" ID x 17.0" (Order item 11)
4	-----	1	Pump, Circulation (See WATER TANK ASSEMBLY)
5	29421.0000	2	Clamp, Hose Worm Drive .625/.75" (Early Models)
	12422.0001	2	Clamp (Late Models)
6	45928.0000	1	Elbow
7	51902.0000	1	Connector .38" Barb
8	51906.0000	1	Fitting, Bulkhead
9	M2336.1000	-	Insulation, Tube 25/50 .38" ID x 72.0" (Cut to required length)
10	M2546.1000	-	Tape, Tube Insulating (Use as required)
11	45848.1000	-	Hose, Flex .38" ID x .625" OD x 12.0" (Cut to required length)
	45848.1001	-	Hose, Flex .38" ID x .625" OD x 36.0" (Cut to required length)
	45848.1002	-	Hose, Flex .38" ID x .625" OD x 120.0" (Cut to required length)



NOTE: Letters appearing within this illustration correspond to matching connections in other illustrations.

PRODUCT COIL & LINES (EARLY MODELS)

ITEM	PART NO.	QTY.	DESCRIPTION
1	-----	1	Product Coil (See WATER TANK ASSEMBLY)
2	21275.0003	2	Clamp .57" - .70" (Two additional used on 230V)
3		1	Hose, Flex .38" ID x 5.75" (120V)
		1	Hose, Flex .38" ID x 4.75" (Order item 11)(230V)
4	36233.0005	1	Valve, Water Inlet 120V
	36233.0006	1	Valve, Water Inlet 230V
	32283.0000	2	Screw, Pan Head M4 x 6mm
			} See item 14
5	37297.1001	1	Fitting, Elbow .38" FI x .75" Fine Hose (Includes Gasket)
	41640.0000	1	Gasket
6		1	Hose, Braided .25" ID x 15.75" (Order item 12)
7	21275.0006	2	Clamp .45" - .55"
8	34460.0000	1	Coupling, Quick Disconnect, Male
9		1	Hose, Flex .38" ID x 1.50" (Order item 11)(230V)
10	40071.0001	1	Check Valve (230V)
11	45848.1000	-	Hose, Flex .38" ID x 12.0" (Cut to required length)
	45848.1001	-	Hose, Flex .38" ID x 36.0" (Cut to required length)
	45848.1002	-	Hose, Flex .38" ID x 120.0" (Cut to required length)
12	46048.1000	1	Hose, Braided .25" ID x 12.0" (Cut to required length)
	46048.1001	1	Hose, Braided .25" ID x 36.0" (Cut to required length)
	46048.1002	1	Hose, Braided .25" ID x 120.0" (Cut to required length)
13	M2336.1000	-	Insulation, Tube 25/50 .38" ID x 72.0" (Cut to required length)
14	43644.0000	-	Kit, Valve Rebuild (Not Illustrated)



P4365.75

NOTE: Letters appearing within this illustration correspond to matching connections in other illustrations.

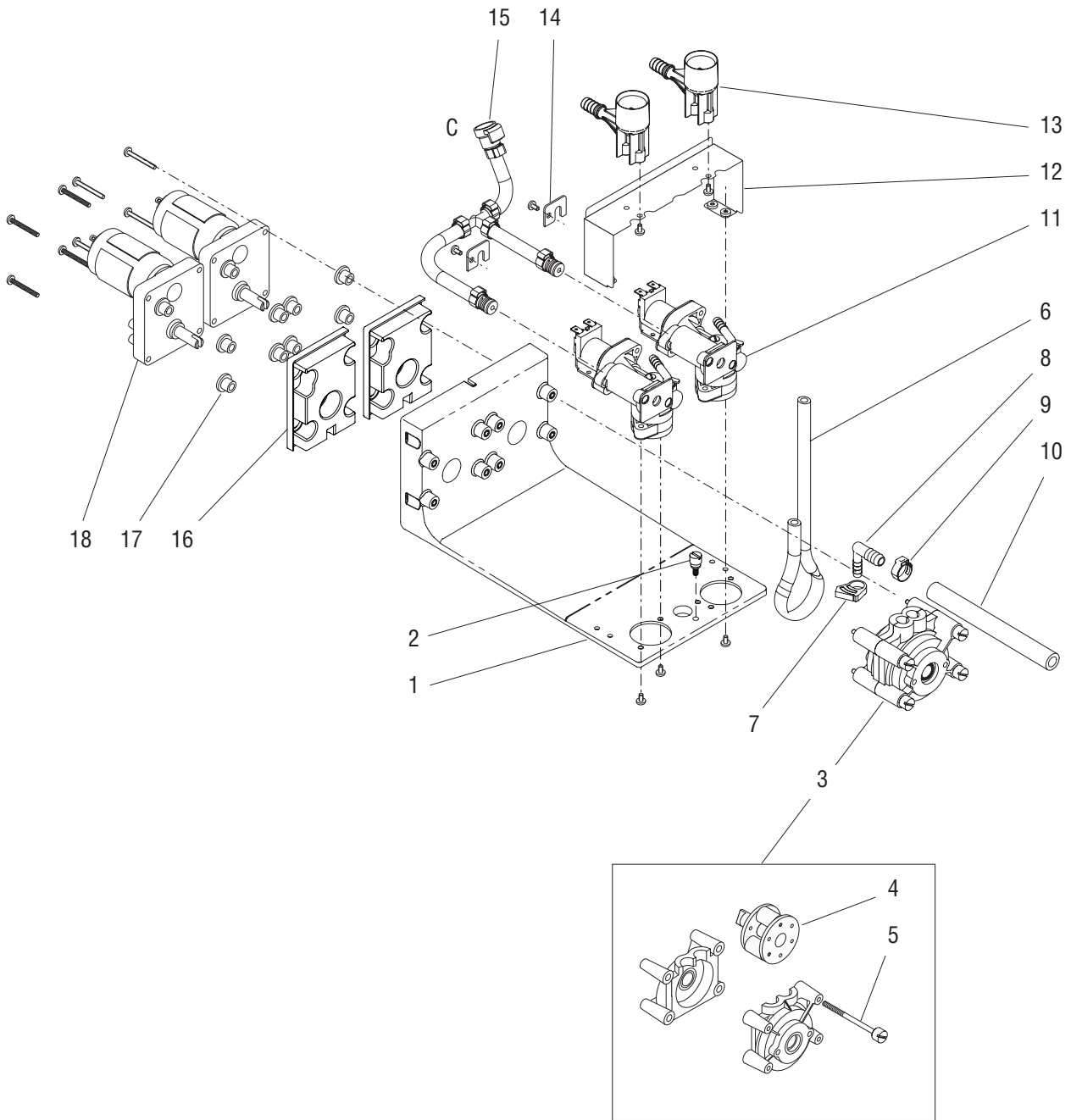
PRODUCT COIL & LINES (LATE MODELS)

ITEM	PART NO.	QTY.	DESCRIPTION
1	-----	1	Product Coil (See WATER TANK ASSEMBLY)
2	21275.0003	4	Clamp .57" - .70"
3		1	Hose, Flex .38" ID x 8.75" (Order item 11)
4	36233.0005 32283.0000	1 2	Valve, Water Inlet 120V (See item 15) Screw, Pan Head M4 x 6mm
5	37297.1001 41640.0000	1 1	Fitting, Elbow .38" FI x .75" Fine Hose (Includes Gasket) Gasket
6		1	Hose, Braided .25" ID x 15.75" (Order item 12)
7	21275.0006	2	Clamp .406" - .504"
8	34460.0000	1	Coupling, Quick Disconnect, Male
9		1	Hose, Flex .38" ID x 1.50" (Order item 11)
10	40348.0000	1	Fitting, Elbow .38" Barb
11	45848.1000 45848.1001 45848.1002	- - -	Hose, Flex .38" ID x 12.0" (Cut to required length) Hose, Flex .38" ID x 36.0" (Cut to required length) Hose, Flex .38" ID x 120.0" (Cut to required length)
12	46048.1000 46048.1001 46048.1002	1 1 1	Hose, Braided .25" ID x 12.0" (Cut to required length) Hose, Braided .25" ID x 36.0" (Cut to required length) Hose, Braided .25" ID x 120.0" (Cut to required length)
13	M2336.1000	-	Insulation, Tube 25/50 .38" ID x 72.0" (Cut to required length)
14	M2546.1000	-	Tape, Tube Insulating (Use as required)
15	43644.0000	-	Kit, Valve Rebuild (Not Illustrated)



DISPENSE PLATFORM ASSEMBLY

JDF-2S



P3623

NOTE: Letters appearing within this illustration correspond to matching connections in other illustrations.

DISPENSE PLATFORM ASSEMBLY

ITEM	PART NO.	QTY.	DESCRIPTION
-	38474.1000	1	Platform Assy (Includes items 1 - 19)
1	38121.0003	1	Platform
2	38104.0000	1	Thumbscrew
3	28759.0000	2	Pump Head (Includes items 4 & 5)
4	28794.0000	2	Rotor
5	01370.0001	8	Screw, Pan Head #8-32 x 2.45"
6	28755.1011	2	Tube, Norprene .25" ID x 17.0" lg
7	32732.0000	2	Clamp .39"/.48"
8	32656.0000	2	Fitting, Elbow .25" Barb x .38" Barb
9	21275.0003	2	Clamp .57"/.70"
10		2	Hose, Flex .38" ID x 4.75" lg (Order item 20)
11	38018.1001	2	Dispense Valve (See DISPENSE VALVE)
	01308.0000	4	Screw, Truss Head #6-32 x 25"
12	38660.0001	1	Bracket
	01308.0000	4	Screw, Truss Head #6-32 x 25"
13	38120.0005	2	Fitting, Bottle Adapter
	01308.0000	4	Screw, Truss Head #6-32 x 25"
14	37786.0001	2	Plate
	01308.0000	2	Screw, Truss Head #6-32 x 25"
15	-----	1	Manifold, Plain Water (See PLAIN WATER MANIFOLD)
16	33781.0000	2	Gasket
17	32957.0000	8	Bushing, Rubber
18	32613.1003	2	Motor Assy
	01322.0001	4	Screw #8-32 x 1.25"

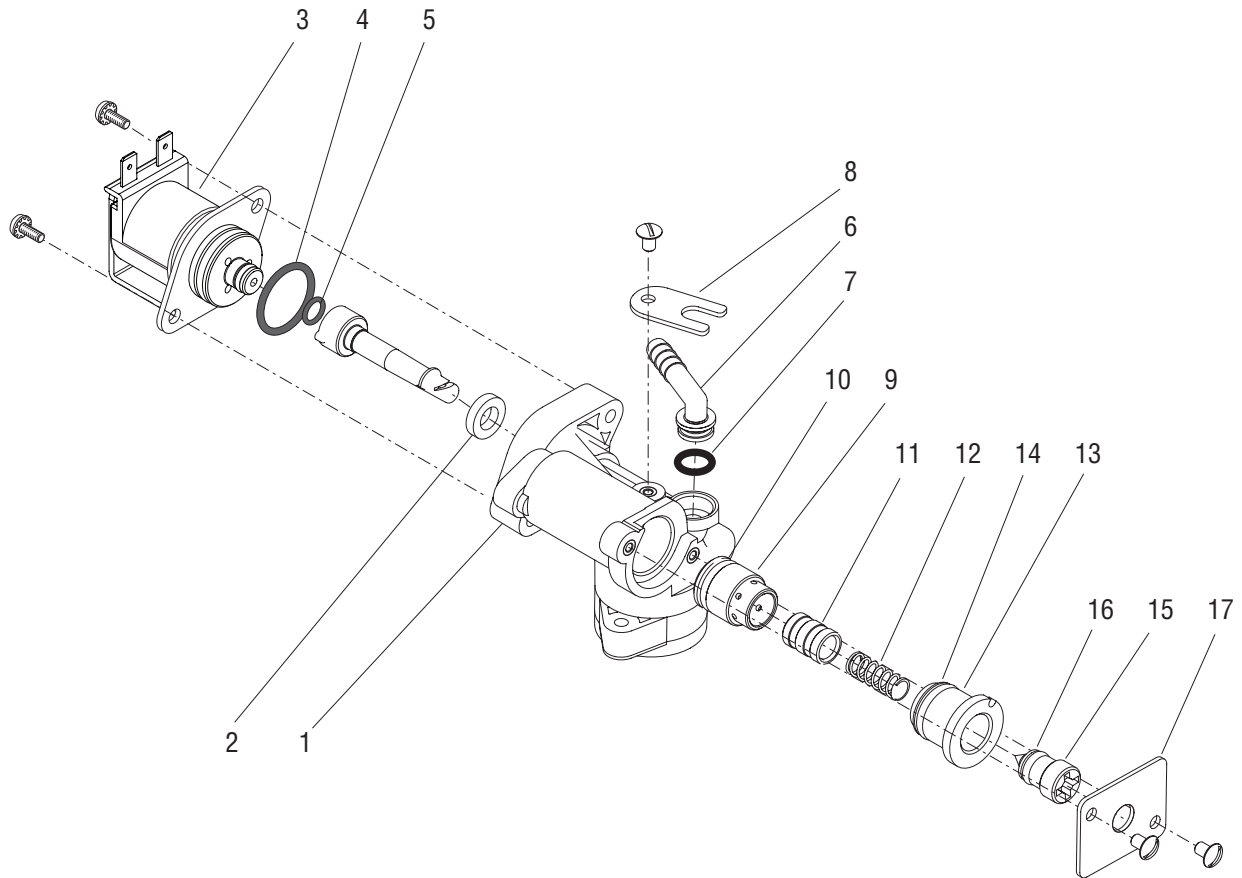
The following items are not illustrated

19	38873.0001	1	Harness, Dispense Platform
20	45848.1000	-	Hose, Flex .375" ID x 12.0" (Use as required)
	45848.1001	-	Hose, Flex .375" ID x 36.0" (Use as required)
	45848.1002	-	Hose, Flex .375" ID x 120.0" (Use as required)
21	39690.0000	-	Pump Tube (Includes items 6,7,8,9 & 10)



DISPENSE VALVE ASSEMBLY

JDF-2S



P3503

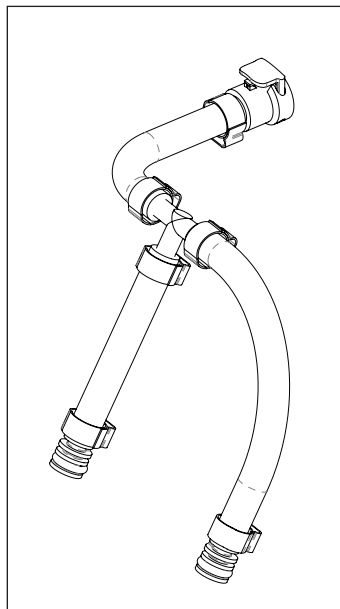
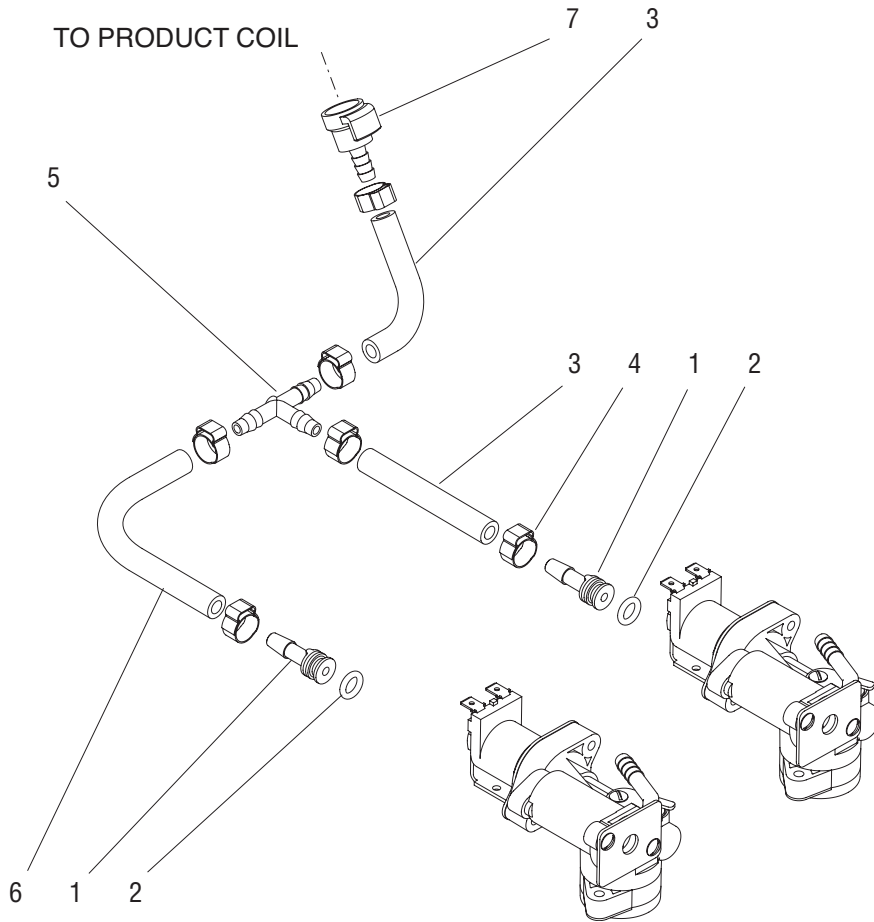
DISPENSE VALVE ASSEMBLY

ITEM	PART NO.	QTY.	DESCRIPTION
-	38018.1001	1	Dispense Valve Assy (Includes items 1 - 19)
1	37801.0003	1	Body
2	37990.0000	1	Seal
3	32252.0001	1	Valve, Solenoid (Includes items 4 & 5)
	01347.0000	2	Screw, Truss Head 6-32 x .38"
4	33580.0000	1	O-ring
5	33553.0000	1	O-ring
6	32463.0000	1	Fitting, Elbow
7	32849.0001	1	O-ring (Also use item 18)
8	37853.0000	1	Clamp
	01308.0000	1	Screw #6-32 x .25"
9	32603.0000	1	Sleeve
10	24733.0006	1	O-ring (Also use item 18)
11	32602.0000	1	Piston
12	32853.0001	1	Spring, Flow Control
13	32624.0004	1	Bonnet, Adjuster
14	24733.0017	1	O-ring (Also use item 18)
15	32623.0004	1	Adjuster, Position
16	32851.0000	1	O-ring (Also use item 18)
17	37977.0000	1	Bracket, Water Adjustment
	01308.0000	2	Screw #6-32 x .25"
18	44023.1000	-	Lube, Silicone (Use when assembling items 7,10,14 & 16)



PLAIN WATER MANIFOLD

JDF-2S



P3624
P3624.1

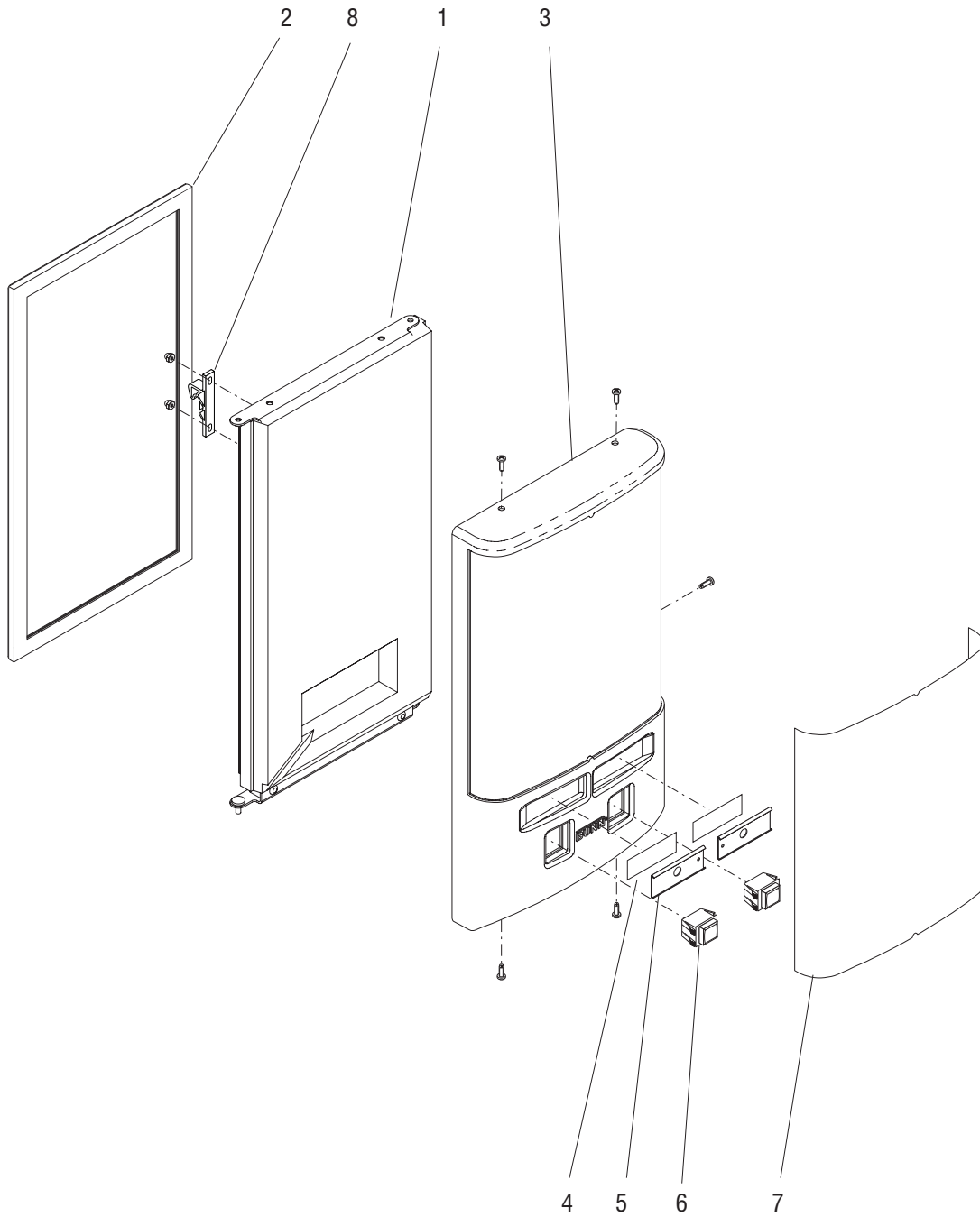
PLAIN WATER MANIFOLD

ITEM	PART NO.	QTY.	DESCRIPTION
1	32631.0004	2	Fitting, Straight
2	32849.0001	2	O-ring
3		2	Hose, Braided .25" ID x 3.0" (Order item 8)
4	21275.0006	6	Clamp .45 - .55"
5	38605.0000	1	Tee .25" Barb
6		1	Hose, Braided .25" ID x 5.25" (Order item 8)
7	34461.0000	1	Coupling, Quick Disconnect, Female
8	46048.1000	1	Hose, Braided .25" ID x 12.0" (Cut to required length)
	46048.1001	1	Hose, Braided .25" ID x 36.0" (Cut to required length)
	46048.1002	1	Hose, Braided .25" ID x 120.0" (Cut to required length)
9	38160.1001	1	Manifold Assy, Plain Water (Included items 1 thru 7)



DOOR ASSEMBLY - UNLITED

JDF-2S



DOOR ASSEMBLY - UNLITED

ITEM	PART NO.	QTY.	DESCRIPTION
1	49988.0002	1	Door, Inner (Includes item 2)
2	38568.0002	1	Gasket, Door
3	38476.1000	1	Cover, Door Front
	02331.0001	5	Screw, Truss Head, Blk #10-32 x .375"
4	32819.0001	2	Strip, Adhesive
5	37018.0001	2	Flavor Label Holder
6	28296.0002	2	Switch, Dispense
7	38560.0000	1	Decal, Door Wrap (BUNN Juice)
	38560.0001	1	Decal, Door Wrap (BUNN Iced Coffee)
8	34667.0000	1	Keeper, Door Latch
	02319.0000	2	Nut, Acorn
	01501.0000	2	Washer

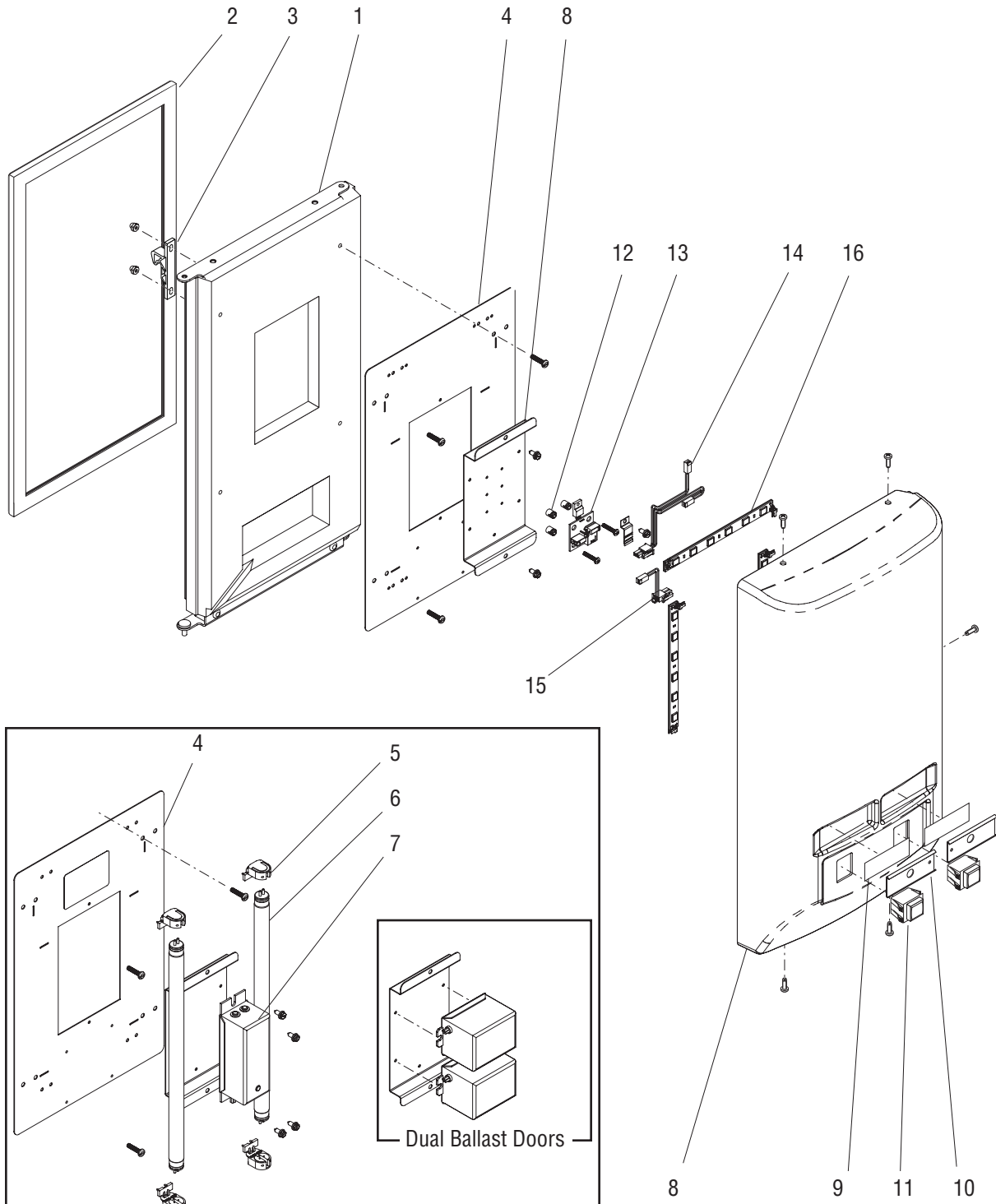
The following items are not illustrated

9	38871.0000	1	Wiring Harness, Switches
10	32861.0000	-	Decals, Flavor (BUNN Juice)
	32861.0001	-	Decals, Flavor (BUNN Iced Coffee)



DOOR ASSEMBLY - LITED w/MECHANICAL SWITCHES

JDF-2S



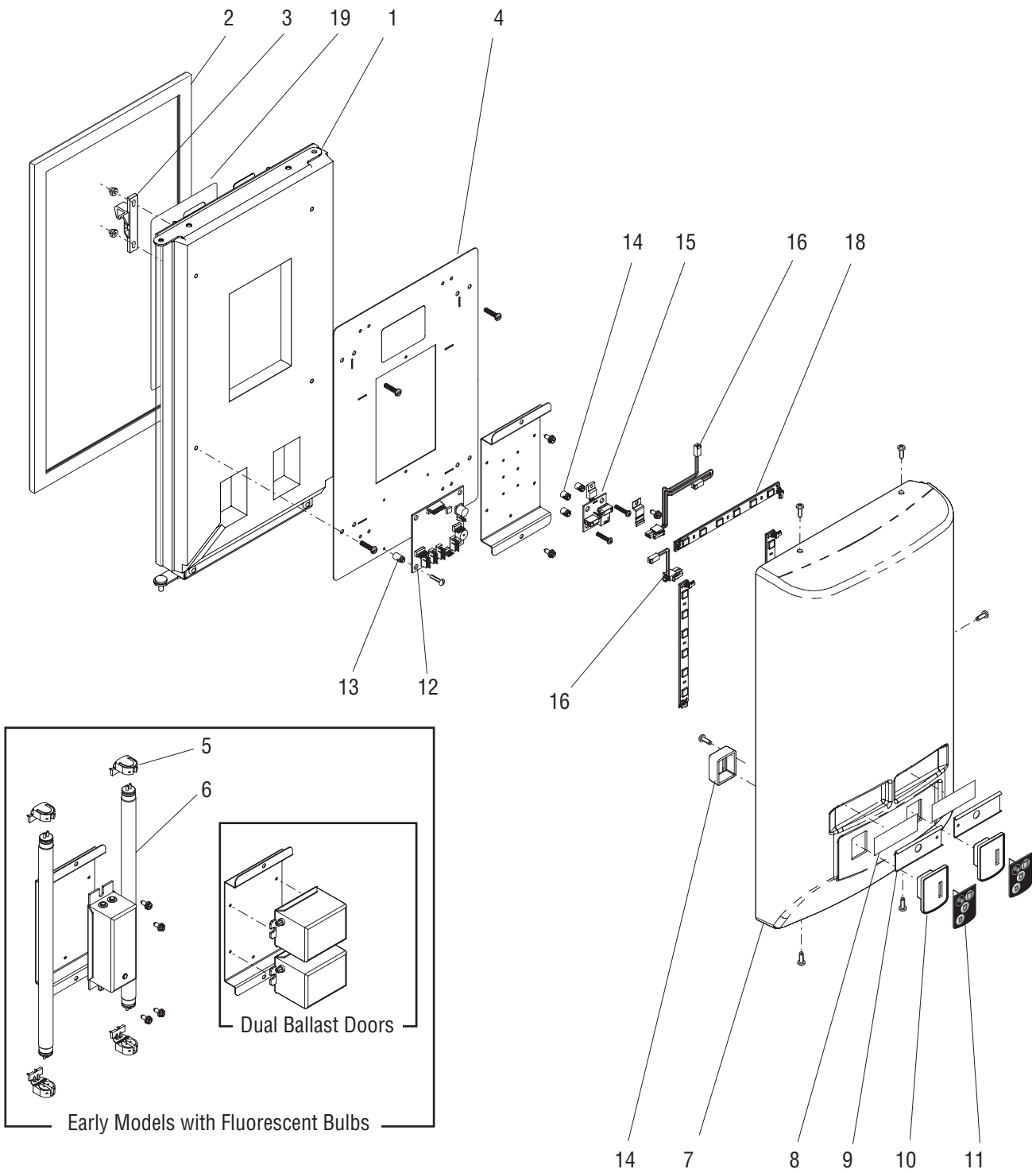
P3933

DOOR ASSEMBLY - LITED w/MECHANICAL SWITCHES

ITEM	PART NO.	QTY.	DESCRIPTION
1	49988.0002	1	Door, Inner (Includes item 2)
2	38568.0002	1	Gasket, Door
3	34667.0000	1	Keeper, Door Latch
	02319.0000	2	Nut, Acorn
	01501.0000	2	Washer
4	39721.0001	1	Panel, Light
	01370.0000	4	Screw, Pan Head #8-32 x .75"
5	27543.0001	4	Lamp Holder (Early Models)
6	26239.0000	2	Lamp, Fluorescent (Early Models)
7	42528.0001	1	Ballast (Single Ballast Doors)
	02335.0001	2	Screw, Hex Crimptite #8 x .38"
8	39699.0000	1	Cover, Door Front (Juice Display)
	39699.0001	1	Cover, Door Front (Iced Coffee Display)
	02331.0001	5	Screw, Truss Head, Blk #10-32 x .375"
9	32819.0001	2	Strip, Adhesive
10	37018.0001	2	Flavor Label Holder
11	28296.0002	2	Switch, Dispense
12	29081.0005	3	Spacer
13	41727.1000	1	Circuit Board
14	42609.0000	1	Wiring Harness
15	42609.0001	1	Wiring Harness
16	42593.0000	3	LED

The following items are not illustrated

17	38871.0000	1	Wiring Harness, Switches
18	32861.0000	-	Decals, Flavor (BUNN Juice)
	32861.0001	-	Decals, Flavor (BUNN Iced Coffee)



DOOR ASSEMBLY - LITED w/MEMBRANE SWITCHES

ITEM	PART NO.	QTY.	DESCRIPTION
1	49988.0002	1	Door, Inner (Includes item 2)
2	38568.0002	1	Gasket, Door
3	34667.0000	1	Keeper, Door Latch
	02319.0000	2	Nut, Acorn
	01501.0000	2	Washer
4	39721.0001	1	Panel, Light
	01370.0000	4	Screw, Pan Head #8-32 x .75"
5	27543.0001	4	Lamp Holder (Early Models)
6	26239.0000	2	Lamp, Fluorescent (Early Models)
7	39699.0000	1	Cover, Door Front (Juice Display)
	39699.0001	1	Cover, Door Front (Iced Coffee Display)
	02331.0001	5	Screw, Truss Head, Blk #10-32 x .375"
8	32819.0001	2	Strip, Adhesive
9	37018.0001	2	Flavor Label Holder
10	41298.0000	2	Bezel Assy (Portion Control)
	41299.0000	2	Bezel Assy (Push Button)
11	40606.0000	2	Membrane Switch (Portion Control Models)
	44971.0000	2	Membrane Switch (Push Button Models)
12	40875.1000	1	Circuit Board, Portion Control
13	29081.0000	4	Spacer, Circuit Board
14	29081.0005	3	Spacer
15	41727.1000	1	Circuit Board
16	42609.0000	1	Wiring Harness
17	42609.0001	1	Wiring Harness
18	42593.0000	3	LED
19	49633.1000	1	Bracket Kit (Includes screws)
	02340.0001	2	Screw, Hex Hd. #8-32 x .38"

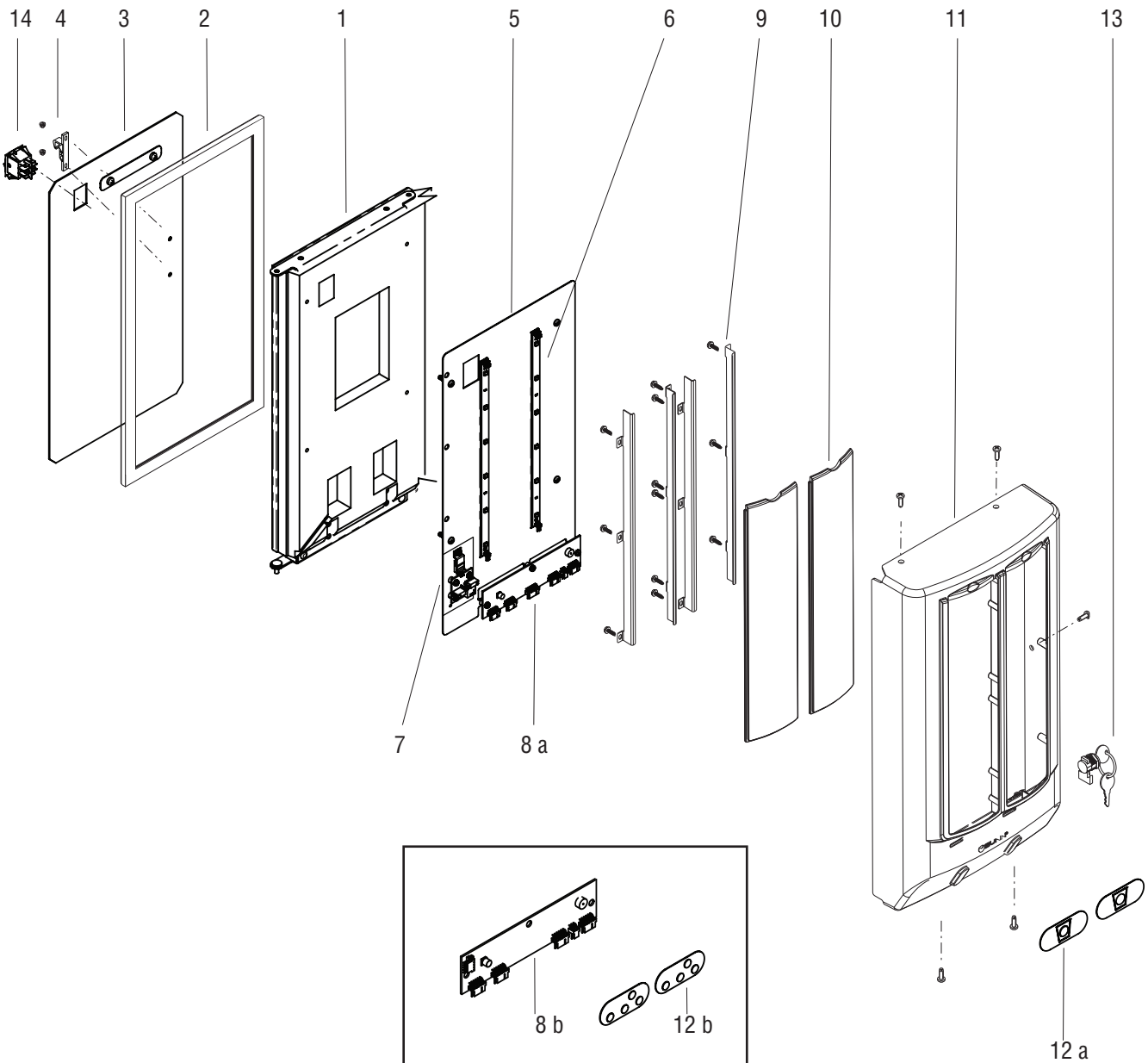
The following items are not illustrated

20	41202.0000	1	Wiring Harness, Door (Early Models w/ Fluorescent Bulbs)
	41202.0001	1	Wiring Harness, Door (Late Models w/ LED Lights)
	41202.0007	1	Wiring Harness, Door (Models w/ LED Lights & Program Switch)
21	32861.0000	-	Decals, Flavor (BUNN Juice)
	32861.0001	-	Decals, Flavor (BUNN Iced Coffee)



DOOR ASSEMBLY - LITED 2 SEGMENT DISPLAY

JDF-2S



Model: JDF-2S PC LIT
Portion Control
Switch Membrane
Four Button

DOOR ASSEMBLY - LITED 2 SEGMENT DISPLAY

ITEM	PART NO.	QTY.	DESCRIPTION
1	49988.0003	1	Door Assy, Foamed with Dispense Switch Hole(Includes item 2 -Later style)
2	38568.0002	1	Gasket, Door
3	49987.0001	1	Panel Assy, Door Inner JDF-2S
4	34667.0000	1	Keeper, Door Latch
	02319.0000	2	Nut, Acorn
	01501.0000	2	Washer
5	50690.0002	1	
	50690.0000	1	
	01370.0000	4	Screw, Pan Head #8-32 x .75"
6	50421.0000	2	CBA, 6 LED
7	41727.1000	1	CBA, LED Backlight Regulator
	29081.0005	3	Spacer, PCB Mounting #6 x .250 LG
	14002.6300	3	Screw, PHN Cross Rec 6-20 x .75
8	50477.1001 a	1	CBA, Membrane Switch JDF-2S/4S
	50477.1000 b	1	CBA, Membrane Switch Portion Control
	29081.0005	3	Spacer, PCB Mtg #6 x .250 LG
	14002.6300	3	Screw, PHN Cross Rec 6-20 x .75
9	50519.0000	4	Bracket, Lens Retaining
	50530.0000	12	Screw, Hex Washer #6-20 x .50"
10	50081.0000	2	Lens
11	54398.0001*	1	Door, JDF-2S 2 Segment w/Lock
	02331.0001	5	Screw
12	50489.0000 a	4	Membrane Switch (Push Button Models)
	50490.0000 b	2	Four Button Membrane Switch (Portion Control Models)
13	32863.0000	1	Key Lock (Includes 2 keys)
	00669.0004	1	Plug, Hole-NYL BLK .75 x .62 Hole (No Key Lock Assy - Not Illustrated)
14	52922.0000	1	Switch, Dispense Deck ON/OFF

The following items are not illustrated

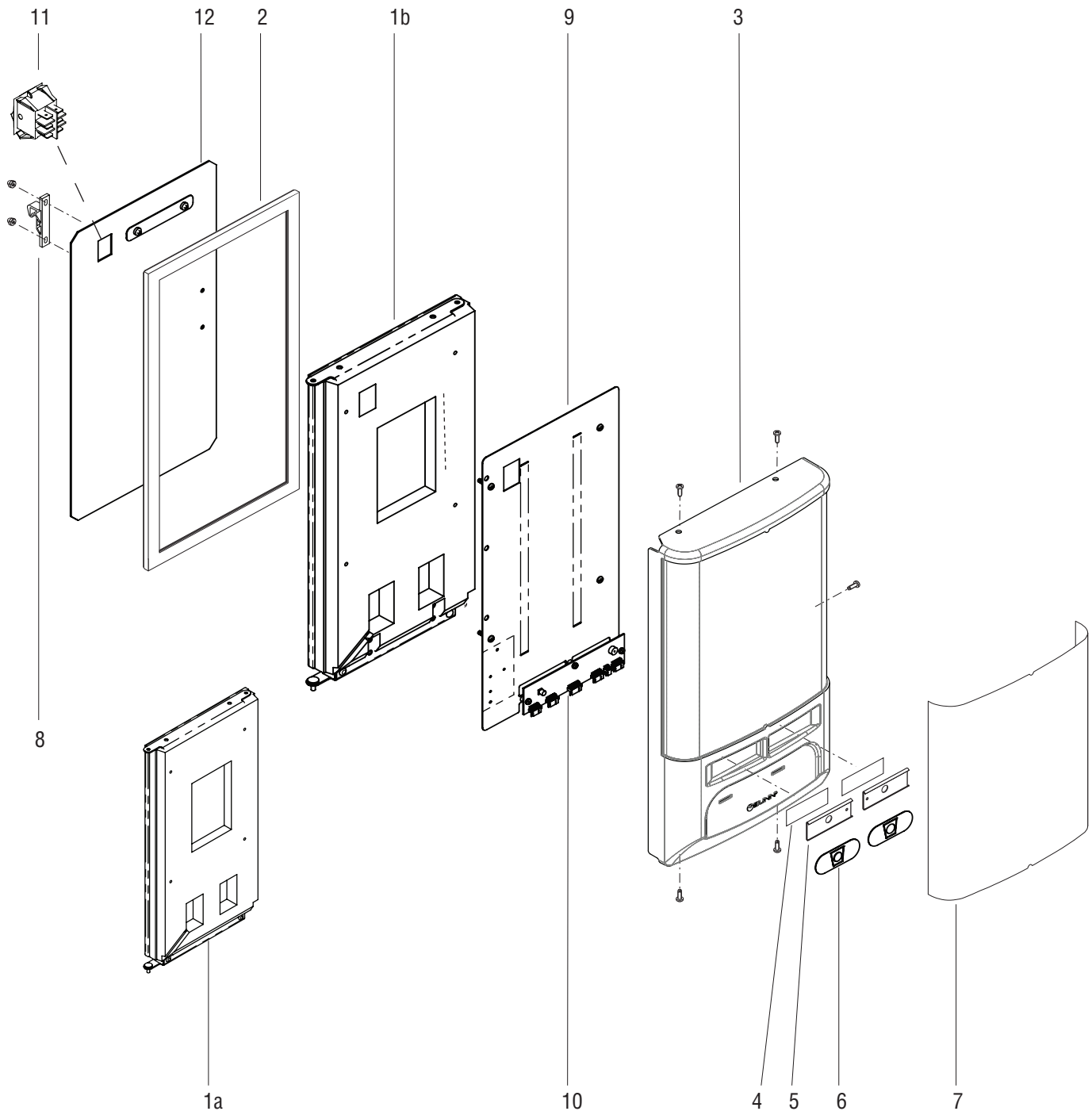
15	42609.0001	1	Wiring Harness, LED/CBA JDF-2S/4S - PH or PC
16	54692.0001	1	Wiring Harness, JDF-2S Disp/Disable Switch w/PH Membranes
	54692.0000	1	Wiring Harness, JDF-2S Dispense/Disable Switch w/PC Membranes
17	50543.1000	-	Graphics Kit (Includes one each of 8 displays)
18	41202.0010	1	Wiring Harness, Door PC Juice w/Program Switch
	41202.0009	1	Wiring Harness, Door PH Juice w/Program Switch
19	41203.0001	1	Wiring Harness, Program Switch - PC

* Door, 2 Lens utilizes 50489.0000,& 50490.0000 membrane switches only.



DOOR ASSEMBLY - UNLITED PUSH/HOLD MEMBRANE

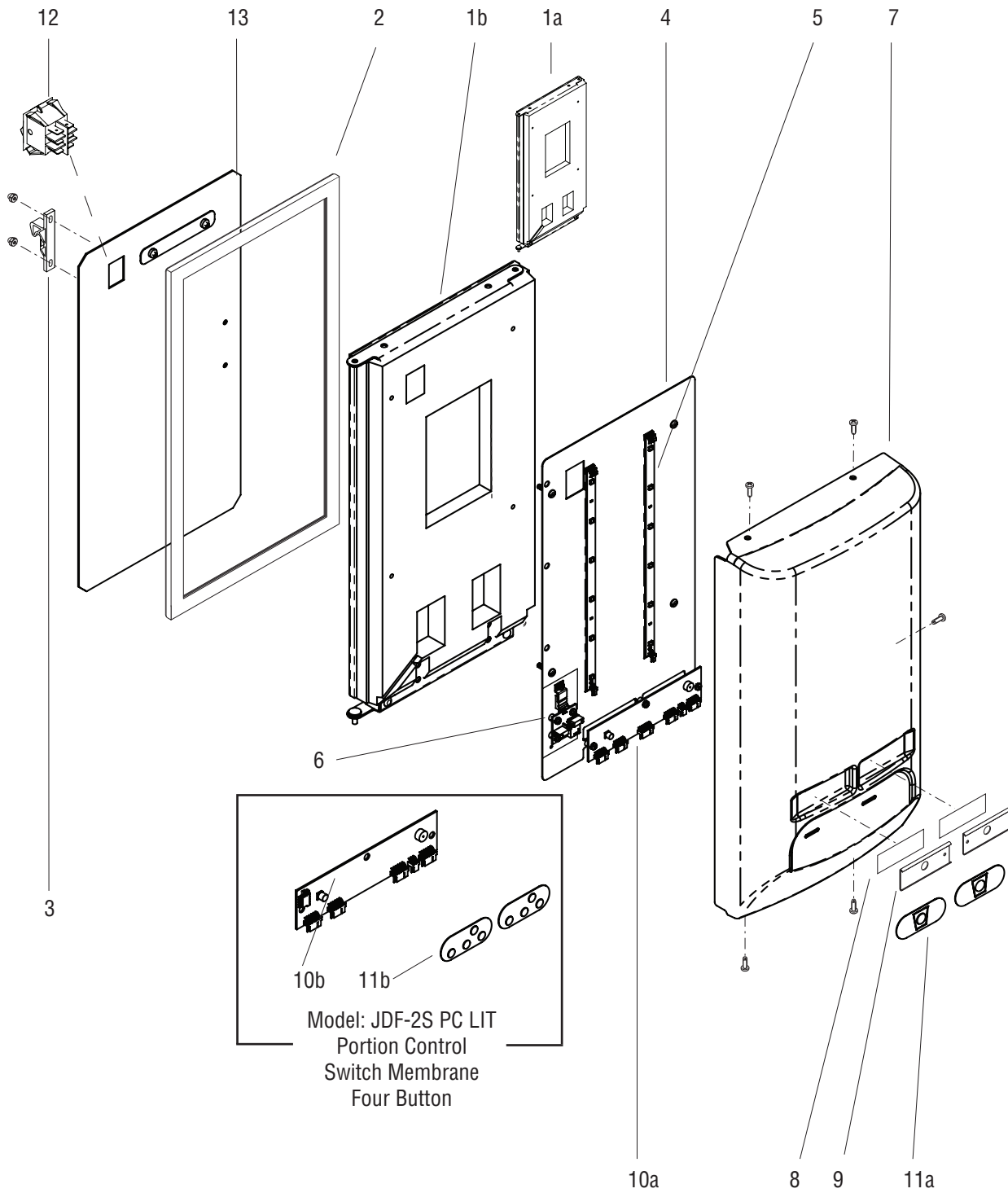
JDF-2S



DOOR ASSEMBLY - UNLITED PUSH/HOLD MEMBRANE

ITEM	PART NO.	QTY.	DESCRIPTION
1	49988.0002 a	1	Door Assy, Foamed without Dispense Switch Hole(Includes item 2 - Early Style)
	49988.0003 b	1	Door Assy, Foamed with Dispense Switch Hole(Includes item 2 -Later style)
2	38568.0002	1	Gasket, Door
3	38476.0002*	1	Cover, Door Front
	38476.0003*	1	Cover, Door Front w/Lock (Not illustrated)
	02331.0001	5	Screw, Truss Head, Blk #10-32 x .375"
4	32819.0001	2	Adhesive, Flavor Label holder
5	37018.0001	2	Flavor Label Holder
6	50489.0000	2	Switch, Membrane One Button
7	38560.0000	1	Decal, Door Wrap (BUNN Juice)
	38560.0001	1	Decal, Door Wrap (BUNN Iced Coffee)
8	34667.0000	1	Keeper, Door Latch
	02319.0000	2	Nut, Acorn
	01501.0000	2	Washer
9	50690.1003	1	Panel Assy, PB JDF-2S
	50690.1001	1	Panel Assy, PC JDF-2S
10	50477.1001	1	CBA, JDF-2S/4S Membrane Switch
	29081.0005	3	Spacer, PCB Mtg #6 x .250 LG
	14002.6300	3	Screw, PHN Cross Rec 6-20 x .75
11	52922.0000	1	Switch, Dispense Deck ON/OFF
12	49987.0001	1	Panel Assy, Door Inner JDF-2S
The following items are not illustrated			
13	41202.0009	1	Wiring Harness, Door PB Juice w/Program Switch
14	54692.0001	1	Wiring Harness, JDF-2S Disp/Disable Switch w/PH Membranes
15	32861.0000	1	Decals, Flavor (BUNN Juice)
	32861.0001	1	Decals, Flavor (BUNN Iced Coffee)

* Door Cover utilizes 50489.0000 membrane switches only.



DOOR ASSEMBLY - LITED w/PB or PC MEMBRANE SWITCHES

ITEM	PART NO.	QTY.	DESCRIPTION
1	49988.0002 a	1	Door Assy, Foamed without Dispense Switch Hole(Includes item 2 - Early Style)
	49988.0003 b	1	Door Assy, Foamed with Dispense Switch Hole(Includes item 2 -Later style)
2	38568.0002	1	Gasket, Door
3	34667.0000	1	Keeper, Door Latch
	02319.0000	2	Nut, Acorn
	01501.0000	2	Washer
4	50690.0000	1	Panel Assy, Light-LED PC JDF-2S
	01370.0000	4	Screw, Pan Head #8-32 x .75"
5	50421.0000	2	CBA, 6 LED
6	41727.1000	1	CBA, LED Backlight Regulator
	29081.0005	3	Spacer, PCB Mounting #6 x .250 LG
	14002.6300	3	Screw, PHN Cross Rec 6-20 x .75
7	53866.0000*	1	Graphic Form, Lit Door JDF-2S Membrane (Juice)
	53866.0001*	1	Graphic Form, Lit Door w/lock (Not illustrated)
	53866.0006*	1	Graphic Form, Lit Door (Iced Coffee)
	02331.0001	5	Screw, Truss Head, Blk #10-32 x .375"
8	32819.0001	2	Adhesive, Flavor Label holder
9	37018.0001	2	Flavor Label Holder
10	50477.1001 a	1	CBA, Membrane Switch JDF-2S/4S
	50477.1000 b	1	CBA, Membrane Switch Portion Control
	29081.0005	3	Spacer, PCB Mtg #6 x .250 LG
	14002.6300	3	Screw, PHN Cross Rec 6-20 x .75
11	50489.0000 a	2	Membrane Switch (Push Button Models)
	50490.0000 b	2	Four Button Membrane Switch (Portion Control Models)
12	52922.0000	1	Switch, Dispense Deck ON/OFF
13	49987.0001	1	Panel Assy, Door Inner JDF-2S

The following items are not illustrated

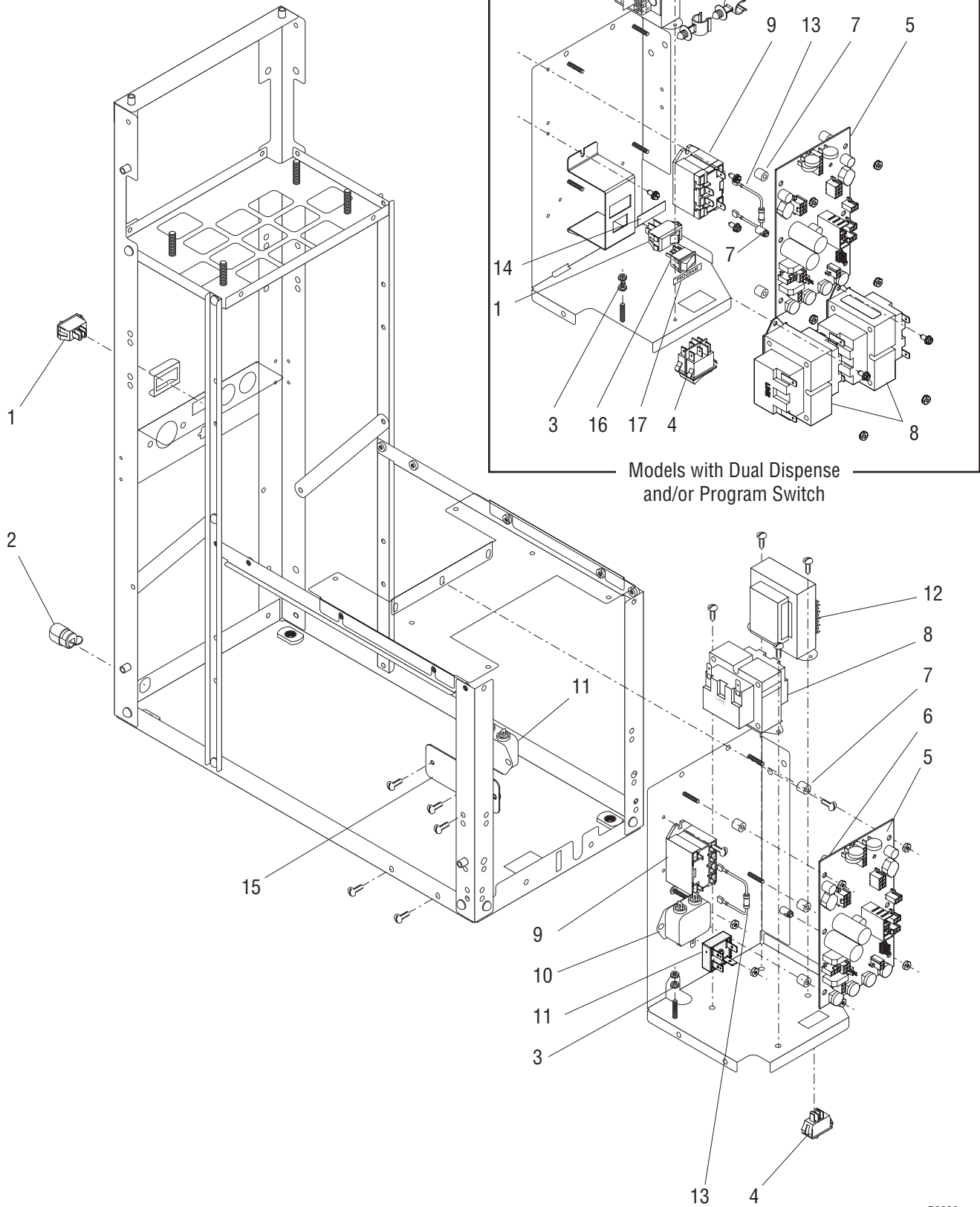
14	41202.0009	1	Wiring Harness, Door PH Juice w/Program Switch
	41202.0010	1	Wiring Harness, Door PC Juice w/Program Switch
15	54692.0001	1	Wiring Harness, JDF-2S Dispense/Disable Switch - PH Membranes
	54692.0000	1	Wiring Harness, JDF-2S Dispense/Disable Switch - PC Membranes
16	42609.0001	1	Wiring Harness, LED/CBA JDF-2S/4S - PH or PC
17	41203.0001	1	Wiring Harness, Program Switch - PC

* Door Cover utilizes 50489.0000 and 50490.0000 membrane switches only.



ELECTRICAL COMPONENTS

JDF-2S



P3626

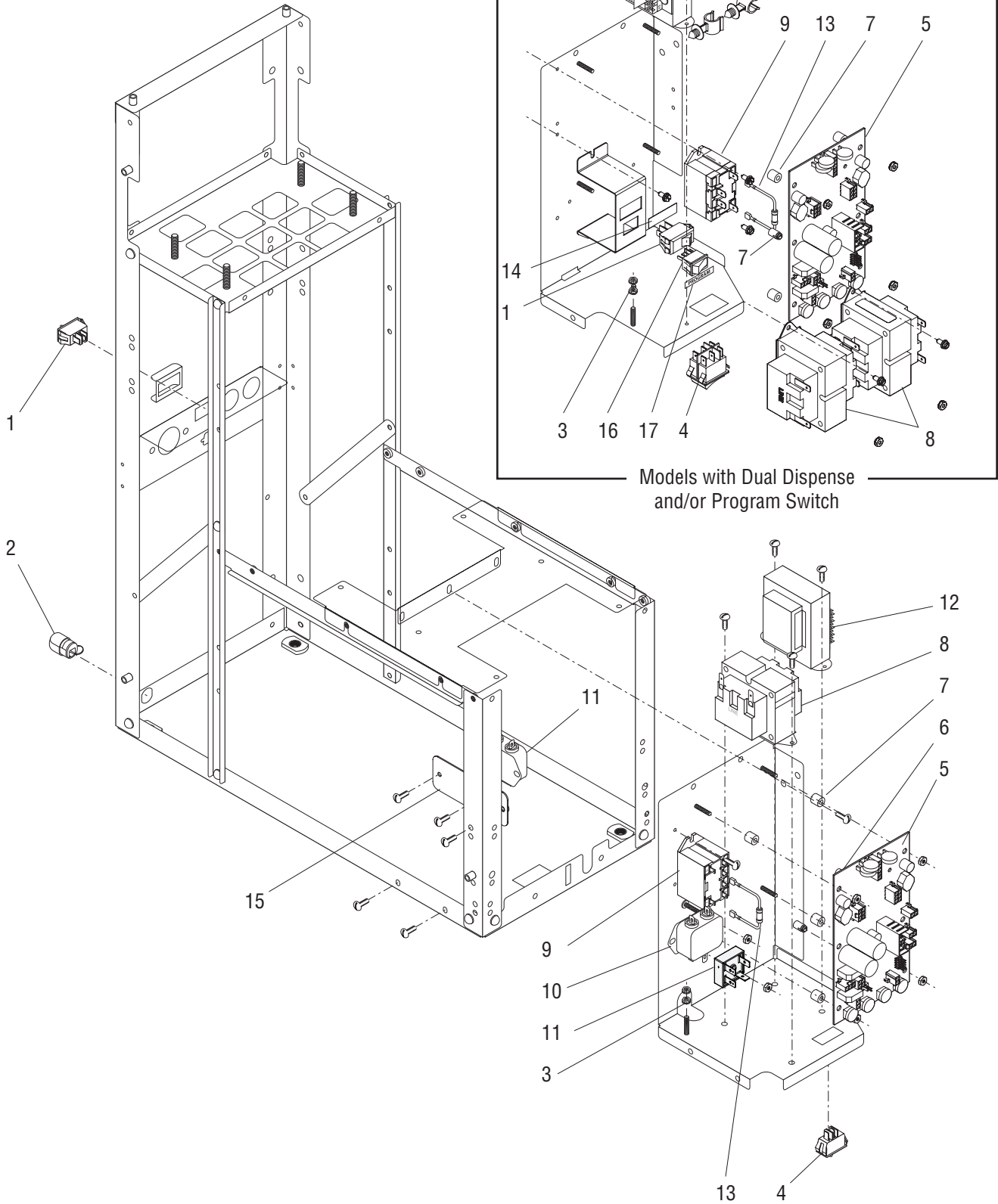
ELECTRICAL COMPONENTS

ITEM	PART NO.	QTY.	DESCRIPTION
1	04786.0002	1	Switch, Compressor ON/OFF
2	00707.0000	1	Bushing, Strain Relief
3	00970.0000	2	Nut, Harness Grounding
4	52922.0000	1	Switch, Dispense Deck ON/OFF
5	40177.1000	1	Circuit Board
	00973.0000	4	Nut, Keps #6-32
6	29081.0000	2	Spacer
7	01533.0000	4	Spacer
8	39305.0000	1	Transformer 120V (One additional used with Dual Dispense)
	39417.0001	1	Transformer 230V
	02335.0001	2	Screw, Crimptite #8 x .38"
9	37711.0000	1	Relay 120V
	37711.0001	1	Relay 230V
	02335.0001	2	Screw, Crimptite #8 x .38"
10	29446.0000	1	EMI Filter 230V
	02335.0001	2	Screw, Crimptite #8 x .38"
11	22126.0000	1	Rectifier (Lited Doors w/ Fluorescent Bulbs only)
	00973.0000	1	Nut, Keps #6-32
12	28860.0000	1	Transformer 120V (Models w/ Lited Door)
	28860.0001	1	Transformer 230V (Models w/ Lited Door)
	02335.0001	2	Screw, Crimptite #8 x .38"
13	40770.1000	1	Resistor 230V
14	41509.0000	1	Decal, Compressor Switch (Models with Front Mounted Compressor Sw.)
15	41410.0000	1	Bracket, EMI Filter (Models with Front Mounted Compressor Sw.)
	02335.0001	1	Screw, Crimptite #8 x .38"
	02328.0003	2	Screw, Pan Head #6-32 x .312"
	00973.0000	2	Nut, Keps #6-32
16	20317.0004	1	Switch, Program
17	44240.0000	1	Decal, Program

(Continued)



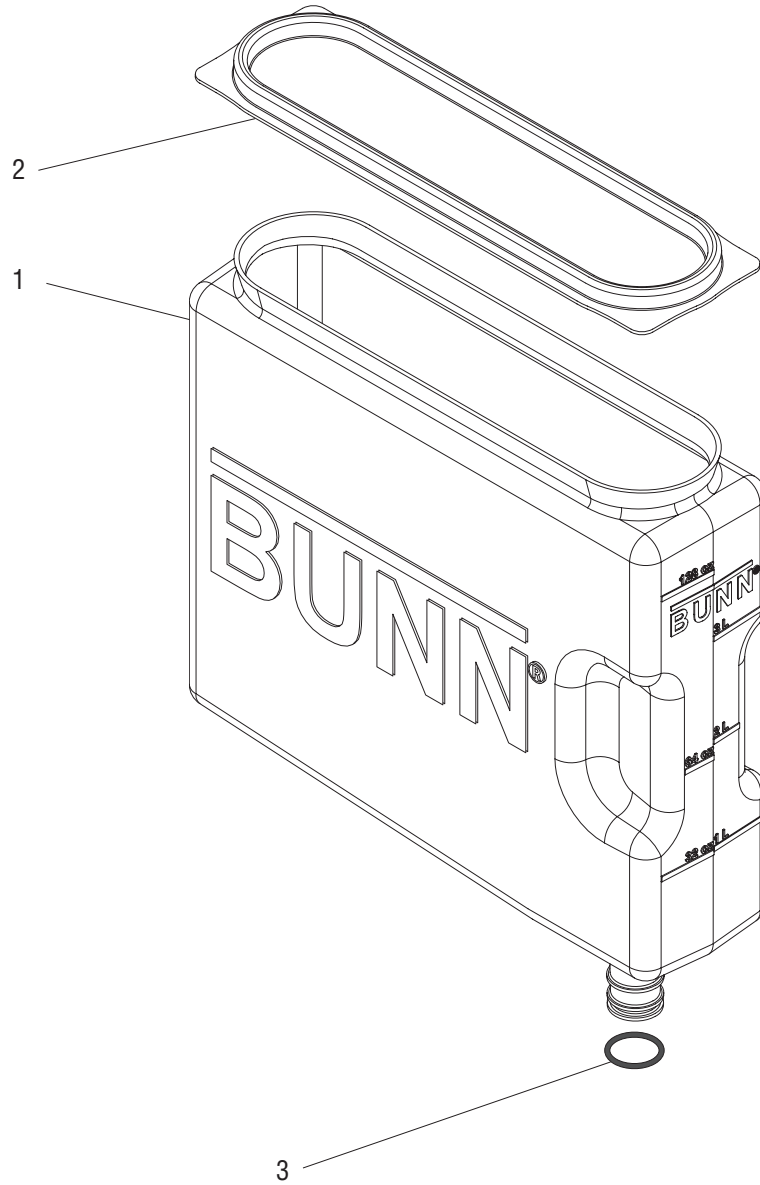
(Continued)



P3626

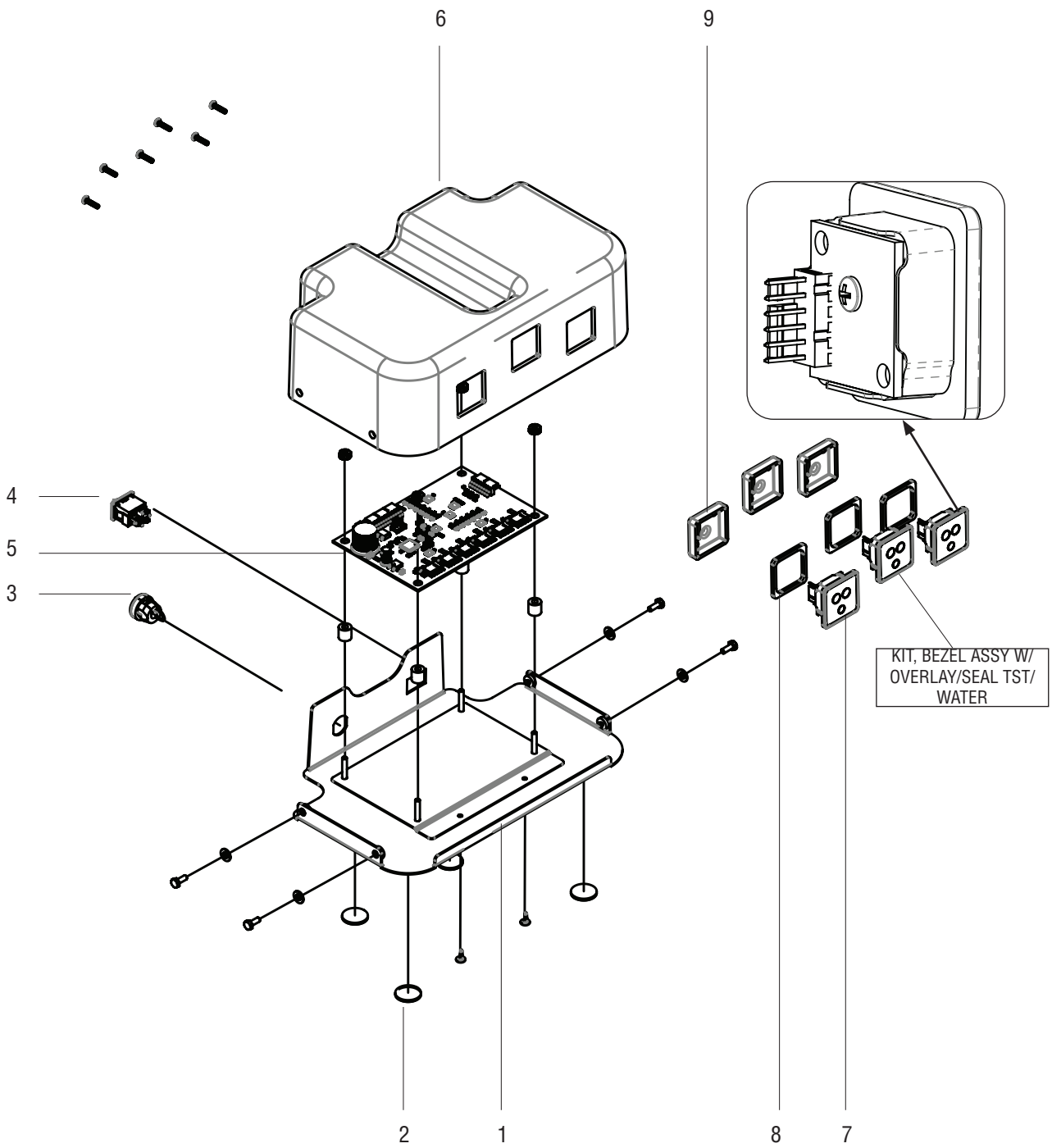
ELECTRICAL COMPONENTS

ITEM	PART NO.	QTY.	DESCRIPTION
The following items are not illustrated			
18	20630.0013	1	Power Cord 120V
19	38870.0000	1	Wiring Harness, Transformer to Circuit Bd. (One additional used with Dual Dispense)
20	40118.0000	1	Wiring Harness, Transformer to Circuit Board (Lited Doors)
21	38869.0001	1	Wiring Harness, Main 120V (Models with rear mounted refrigeration switch)
	38869.0002	1	Wiring Harness, Main 120V (Models with front mounted refrigeration switch)
22	38873.0001	1	Wiring Harness, Platform
23	38872.0001	1	Wiring Harness, Unlited Door
	38872.0002	1	Wiring Harness, Unlited Door (Models with Program Sw.)
	40044.0002	1	Wiring Harness, Lited Door (Models with Fluorescent Bulbs)
	40044.0004	1	Wiring Harness, Lited Door (Models with LED Lighting)
24	39198.0000	1	Wiring Harness, EMI Filter 230V
25	41436.0000	1	Wiring Harness, Transformer Jumper (Models with Dual Dispense)
26	41203.0000	1	Wiring Harness, Dispense Disable Switch (Models with Portion Control)
	41203.0001	1	Wiring Harness, Dispense Disable Switch (Models with Program Sw.)
27	41202.0000	1	Wiring Harness, Lited Door (Models with Fluorescent Bulbs)
	41202.0001	1	Wiring Harness, Lited Door (Models with LED Lighting) (Models w/ Portion Control)
	41202.0007	1	Wiring Harness, Lited Door (Models with LED Lighting)(Models w/ Program Sw.)
	41202.0009	1	Wiring Harness, Door PB Juice w/Program Switch (Disp/Disable Switch Located in Door)
	41202.0010	1	Wiring Harness, Door PC Juice w/Program Switch (Disp/Disable Switch Located in Door)
28	54692.0000	1	Wiring Harness, JDF-2S Dispense/Disable Switch - PC (Disp/Disable Switch Located in Door)
	54692.0001	1	Wiring Harness, JDF-2S Dispense/Disable Switch - PB/Membrane (Disp/Disable Switch Located in Door)



REFILLABLE CONTAINER ASSEMBLY

ITEM	PART NO.	QTY.	DESCRIPTION
1	39302.0000	1	Container Assy (Includes items 1-3)
2	39299.0000	1	Lid
3	34261.0000	1	O-ring



TOUCHLESS SENSOR TECHNOLOGY KIT

ITEM	PART NO.	QTY.	DESCRIPTION
	45536.1005*	1	KIT, TST 2 VALVE W/WATER
1	45540.0003	1	PANEL WLDMT, TST/CBA MTG 2 VALVE
2	39443.1003	4	KIT, PAD ADHESIVE BACK .750 X .062
3	00707.0001	1	BUSHING, STRAIN RLF-STR 6L-1
4	57806.0000	1	SWITCH, ON/OFF 10A 125VAC DPST ROCKER
5	57669.1000	1	KIT, JDF/NITRON TOUCHLESS INTERFACE CBA
	00973.0000	4	NUT, KEPS 6-32 ZINC PLATE
	01533.0000	4	SPACER,NYL-.171IDx.375ODx.375
6	45537.0005	1	COVER, TST MTG 2 VALVE W/WATER
	02340.0001	4	SCREW,HEX HD-SST- 8-32x.38
	01522.0001	4	WASHER, FLAT-.187IDx.375OD SST
7	57699.1000	2	KIT, BEZEL ASSY W/OVERLAY/SEAL TST (INCLUDES ITEM 8, 9 & 15)
	57699.1001	1	KIT, BEZEL ASSY W/OVERLAY/SEAL TST/WATER (INCLUDES ITEM 8, 9 & 16)
	38837.0000	6	SCREW, PNH #4 TYPE 25 X .50 (2 SCREWS PER BEZEL ASSY)
8	57666.0000	3	SEAL, TST BEZEL
9	57559.0000	3	RETAINER, TOUCHLESS SENSOR TECH

The following items are not illustrated

10	57673.0000	1	WIRING HARNESS, INTERFACE TO MAIN CBA
11	57672.0000	1	WIRING HARNESS, SENSOR TO INTERFACE
12	57671.0000	1	WIRING HARNESS, SWITCH TO INTERFACE
13	57674.0000	1	WIRING HARNESS, Y-ADAPTER AC POWER
14	57757.0000	1	DECAL, JDF SPLASH GUARD
15	57676.0000	2	OVERLAY, TST BEZEL
16	57676.0001	1	OVERLAY, TST BEZEL AQUA
17	57758.0000	2	OVERLAY, JDF OVAL MEMB SWITCH

* TST kit used on JDF-2S machine with cold water dispense option.