



JDF-4S Silver Series®

JDF-4S P/H or P/C with Lit 4 Segment GFX Door

JDF-4S Lit with Tap Handles

JDF-4S P/H or P/C with Non Lit or Lit Graphic Door



ILLUSTRATED PARTS CATALOG

Designs, materials, weights, specifications, and dimensions for equipment or replacement parts are subject to change without notice.

BUNN-O-MATIC CORPORATION

POST OFFICE BOX 3227

SPRINGFIELD, ILLINOIS 62708-3227

PHONE: (217) 529-6601 FAX: (217) 529-6644

www.bunn.com

BUNN-O-MATIC COMMERCIAL PRODUCT WARRANTY

Warranty statements and information can be found on our website. Please visit <https://commercial.bunn.com/support/warranty-lookup> for further details.

TABLE OF CONTENTS

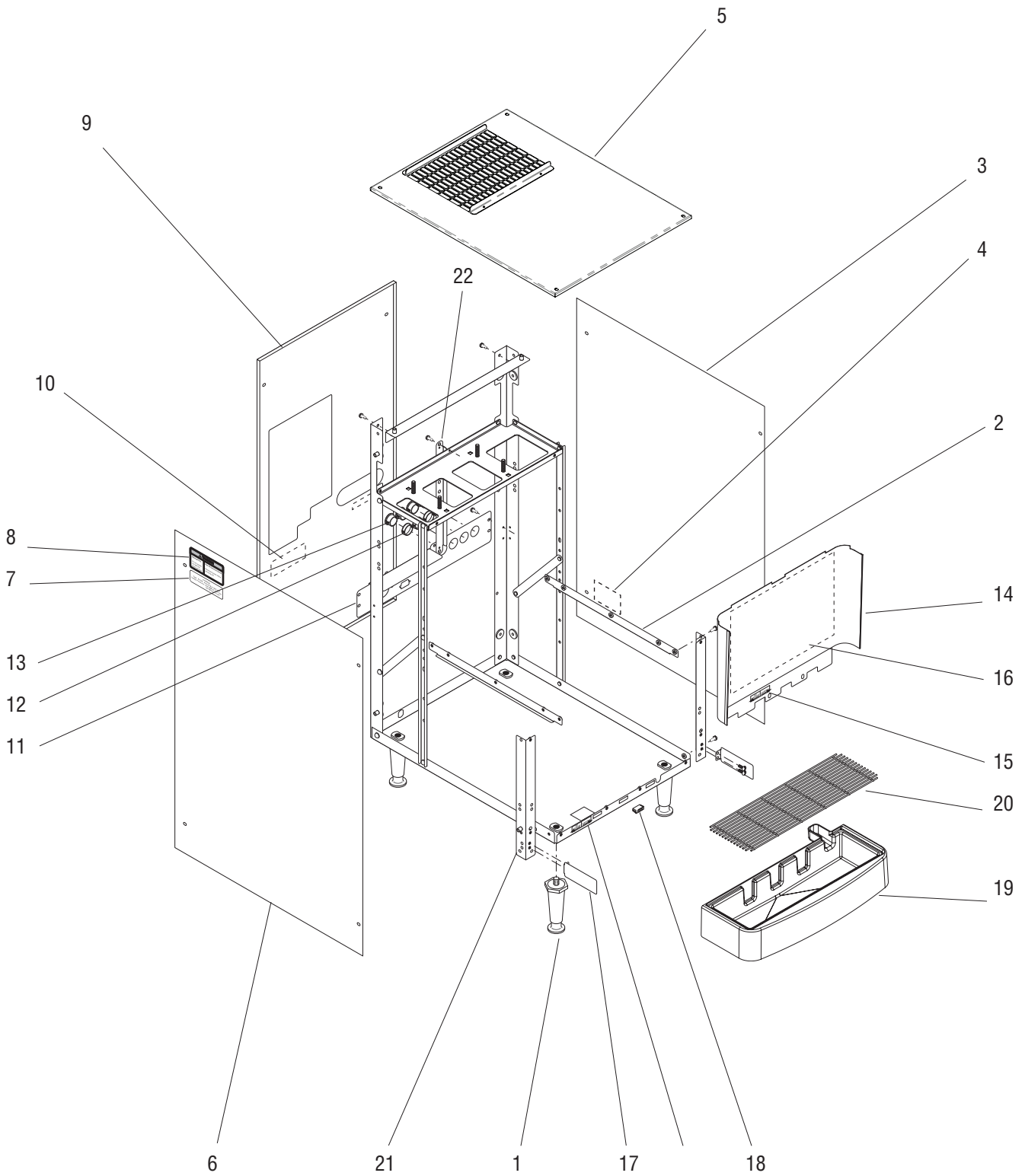
Main Frame & Covers	4
Upper Cabinet & Panels.....	6
Refrigeration Components.....	8,10,12
Compressor Components.....	14,16,18
Fan Assembly	20,22,24
Water Tank Assy.....	26
Circulation Pump & Lines.....	30
Product Coil & Lines	32
Dispense Platform Assy	36
Dispense Valve Assy.....	38
Plain Water Manifold	40
Door Assy - Unlited	42
Door Assy - Lited w/Mechanical Switches.....	44
Door Assy - Lited with Bezel/Membrane Switches	46
Door Assy - Lited with 4 Lens Display with P/H or P/C Switch Membranes	48
Door Assy - Unlited P/H Membrane w/Water	50
Door Assy - Lited with P/H or P/C Membrane Switches	52
Door Assy - Tap Handles	54
Electrical Components.....	56
Refillable Container Assy.....	60
Touchless Sensor Technology Kit.....	62

To search this document electronically, press “control” + “F” (on P.C.) or “command” + “F” on Mac, then type in description or part number, press “enter”.



MAIN FRAME & COVERS

JDF-4S



P3857

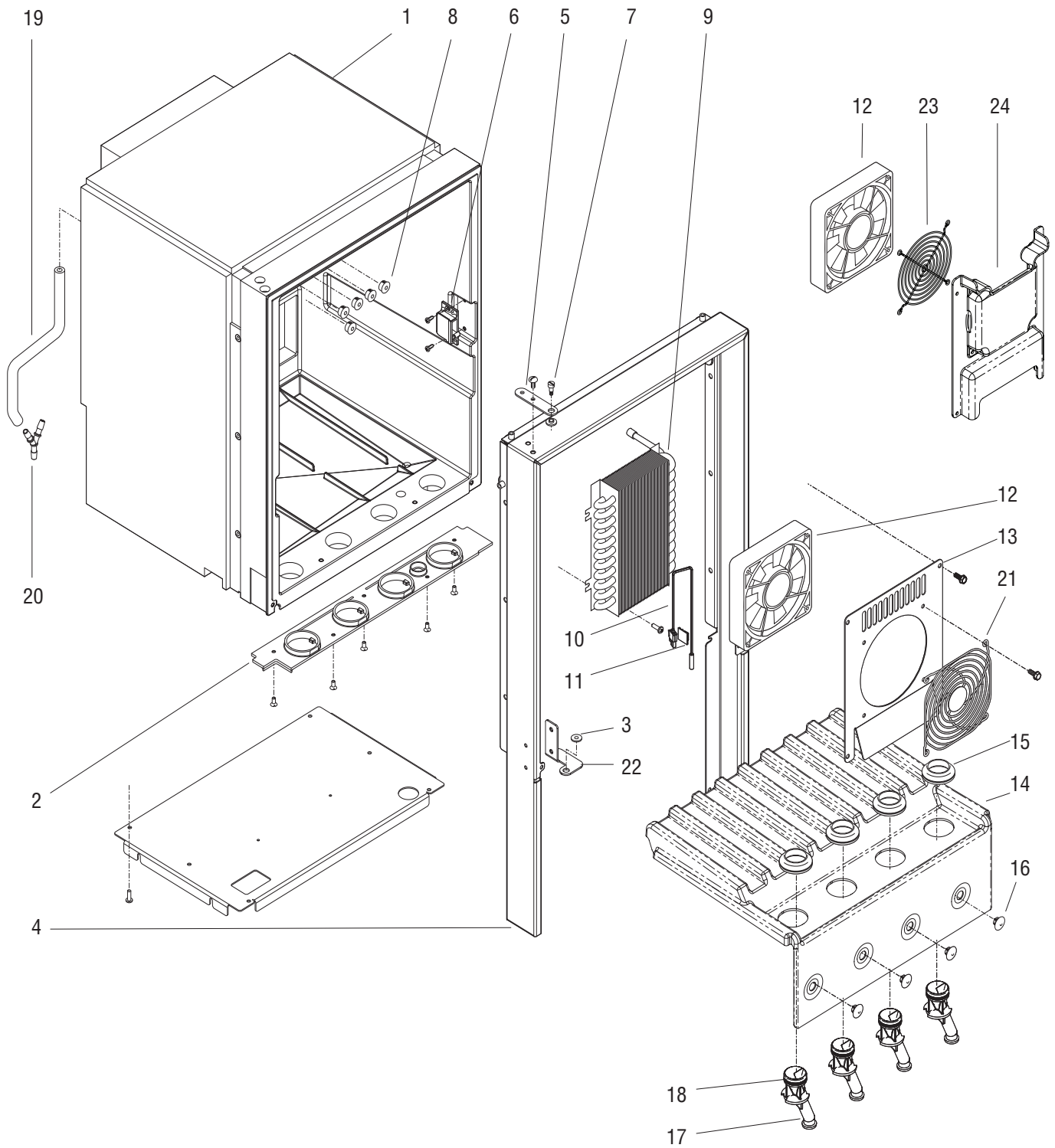
MAIN FRAME & COVERS

ITEM	PART NO.	QTY.	DESCRIPTION
1	26528.0000	4	Leg
	03996.0000	4	Pad, Non-skid
2	38654.0000	2	Bracket, Side
	02308.0000	4	Screw, Pan Head #8-32 x .38"
3	39491.1002	1	Panel w/Decals, Right (Includes item 5)
	02331.0001	4	Screw, Truss Head, Blk #10-32 x .38"
	01532.0000	1	Lockwasher, Int.-tooth .438"
4	00986.7000	1	Decal, Warning - Electrical
5	53917.0001	1	Panel, Top
	02331.0001	4	Screw, Truss Head, Blk #10-32 x .38"
	01532.0000	1	Lockwasher, Int.-tooth .438"
6	39491.1001	1	Panel w/Decals, Left (Includes items 8 & 9)
	02331.0001	4	Screw, Truss Head, Blk #10-32 x .38"
	01532.0000	1	Lockwasher, Int.-tooth .438"
7	33461.0000	1	Decal, Refrigerant Charge
8	27442.7000	1	Decal, Warning - Moving Parts
9	42479.1001	1	Panel w/Decals, Rear (Includes items 11, 12)(Models with Frame mounted Air Filter)
	41336.1003	1	Panel w/Decals, Rear (Includes items 11, 12)(Models with Cover mounted Air Filter)
	02331.0001	4	Screw, Truss Head, Blk #10-32 x .38"
	01532.0000	1	Lockwasher, Int.-tooth .438"
10	00656.0001	1	Decal, Comply To Plumbing Code
11	39387.0003	1	Bracket (Models with Front Mounted Refrigeration Switch)
	02335.0001	4	Screw, Hex Crimptite #8 x .38"
12	27354.0000	4	Bushing
13	00668.0000	4	Plug
14	39435.1000	1	Panel, Splash (Includes items 17 & 18)
	02308.0000	2	Screw, Pan Head #8-32 x .38"
15	38950.0000	2	Decal, Dispense/No Dispense
16	44746.0000	1	Schematic, Electrical
17	38617.0001	2	Bracket
	02308.0000	4	Screw, Pan Head #8-32 x .38"
18	21436.0000	2	Catch, Magnetic
19	38764.1001	1	Drip Tray Assy (Includes Strike Plate and item 22)
	40789.1000	1	Drip Tray Assy, Extended (For use with larger cup sizes)
20	39613.0000	1	Grate, Drip Tray
21	38652.0000	1	Bracket,Front Left
	38653.0000	1	Bracket, Front Right
	02308.0000	4	Screw, Pan Head #8-32 x .38"
22	39469.0000	1	Bracket, Condenser Mounting
	02335.0001	2	Screw, Hex Crimptite #8 x .38"



UPPER CABINET & PANELS

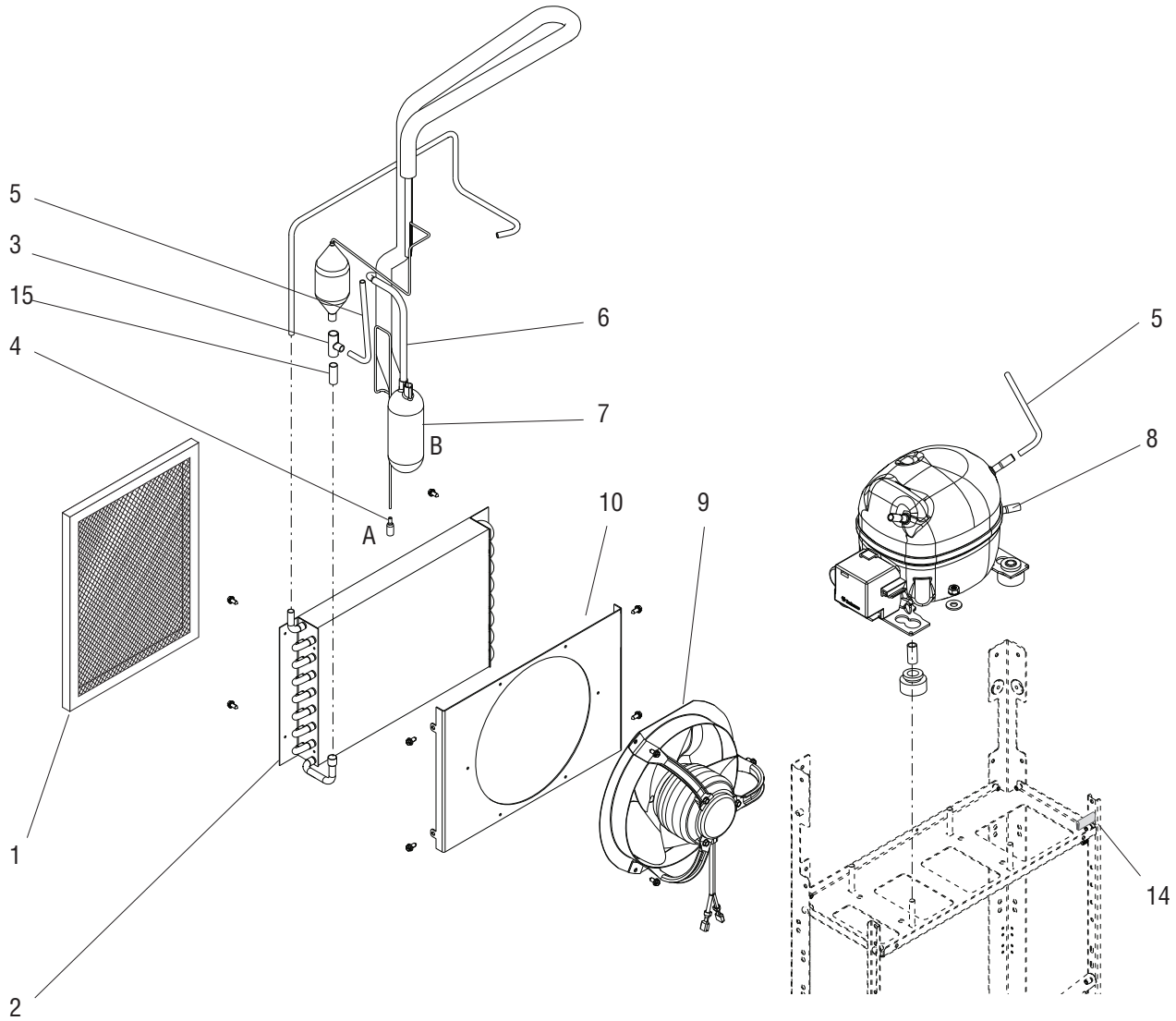
JDF-4S



P3858.1

UPPER CABINET & PANELS

ITEM	PART NO.	QTY.	DESCRIPTION
1	39389.1000	1	Cabinet (Models without Cold Water Dispense)
	39389.1001	1	Cabinet (Models with Cold Water Dispense)
	24544.0000	6	Screw, Pan Head #8-18
2	39394.0000	1	Plate, Bottom Closure
	01359.0000	5	Screw, Flat Head #8-32 x .38"
3	34362.0002	2	Bushing, Hinge
4	39396.0001	1	Wrap (Late Models with Bolt On Door Hinge)
	24544.0000	6	Screw, Pan Head #8-1
	02308.0000	6	Screw, Pan Head #8-32 x .38"
5	34785.0001	1	Bracket, Hinge
	02331.0001	2	Screw, Truss Head, Blk #10-32 x .38"
	43951.0000	2	Washer
6	34666.0001	1	Catch, Door Latch
	01347.0000	2	Screw, Truss Head #6 x .38"
7	34741.0001	1	Screw, Shoulder
8	00669.0002	5	Plug
9	34419.0002	1	Coil, Water
	24544.0000	4	Screw, Pan Head #8-18
10	43694.0000	1	Sensor Assy, Temperature
11	33669.0000	1	Clip, Adhesive Back
12	33297.0000	1	Fan Assy.
13	39393.0000	1	Cover, Fan (Upgrade Kit Available - Item 28)
	24544.0000	4	Screw, Pan Head #8-18
14	39429.0004	1	Shelf, Product
15	32461.0000	4	Gasket, Drip
16	27394.0000	4	Plug
17	49819.1000	4	Nozzle, Quick Stop White (Includes item 18)
	49819.1001	4	Nozzle, Quick Stop Black (Includes item 18)
18	32848.0000	8	O-ring (Also order item 25)
19		1	Tube, Silicone .25"ID x 9.5" (Order item 26)
20	37290.0001	1	"Y" Fitting .25" Barb
21	34010.0001	1	Guard, Fan
	38616.0000	4	Screw, Hex Head #10-24
22	41385.0000	1	Bracket, Lower Door Hinge
	02335.0001	2	Screw, Hex Crimptite #8 x .38"
	43951.0000	2	Washer
23	34010.0001	1	Guard, Cabinet Fan
	38616.0000	4	Screw, Hex HD 10-24 Trilobe
24	53445.0001	1	Cover, Fan Mounting
	24544.0000	4	Screw, Pan Head #8-18
25	44023.1000	-	Lube, Silicone Haynes 1.0 oz Tube (Use when assembling item 18)
26	11707.1000	-	Tube, Silicone .25"ID x 12.0" (Use as required)
27	49819.1004	-	Nozzle Kit, Quick Stop White (Set of 4)
	49819.1005	-	Nozzle Kit, Quick Stop Black (Set of 4)
28	53560.1000	-	Kit, Cabinet Air Flow Upgrade JDF-4S (Includes items 14, 24 & 11)

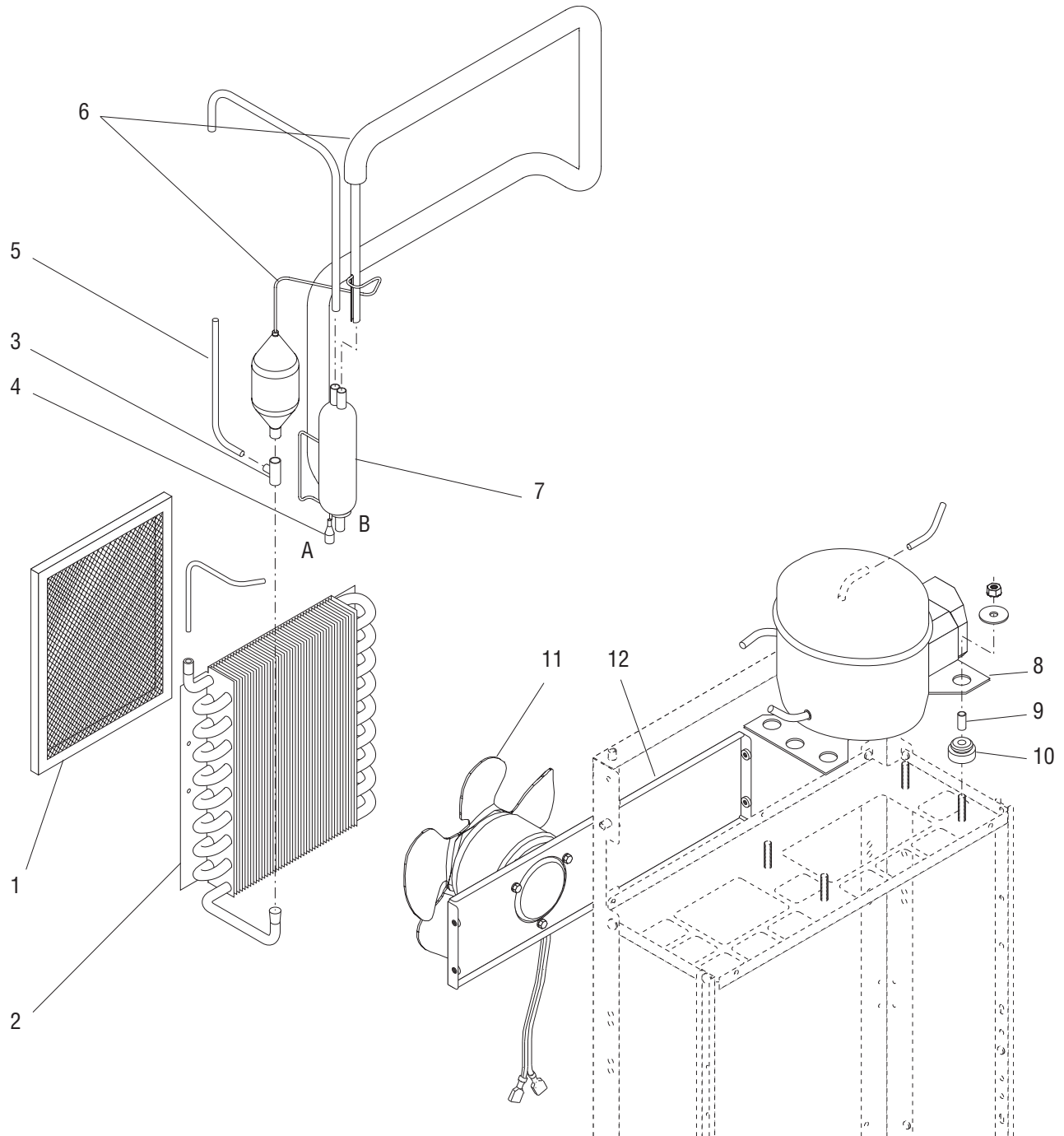


NOTE: Letters appearing within this illustration correspond to matching connections in other illustrations.

P4359.40

REFRIGERATION COMPONENTS (EMBRACO COMPRESSOR)

ITEM	PART NO.	QTY.	DESCRIPTION
1	33856.1000	1	Air Filter Assy (Includes item 16)
2	32176.0000	1	Condenser
	02335.0001	4	Screw, Crimptite #8 x .38"
3	00396.0002	1	Tee (Requires brazing to install)
4	32777.0000	1	Adapter (Requires brazing to install)
5	38937.0000	2	Tube (Requires brazing to install)
6	52030.0000	1	Tube (Requires brazing to install)
7	32776.0000	1	Accumulator
8	-----	1	Compressor (See COMPRESSOR COMPONENTS)
	23700.0000	4	Nut .25"-20
9	-----	1	Fan Assy (See FAN ASSEMBLY)
	02335.0001	3	Screw, Crimptite #8 x .38"
10	32174.0008	1	Shroud, Fan CondenserJDF-4S Corr Res
11	M2546.1000	-	Tape, Tube Insulating (Use as required)
12	M2336.1000	-	Insulation, Tube 25/50 - 0.25"ID x .19" wall x 6.0 Ft (Use as required)
13	12467.1002	-	Velcro, Loop 3.5" (4 pieces)
	12468.1002	-	Velcro, Hook 3.5" (4 pieces)
			} Not Illustrated
14		1	Edging 1.0" (Order item 16)
15	52002.0000	1	Tube (Requires brazing to install)
16	41105.1000	-	Edging 12.0" (Use as required)

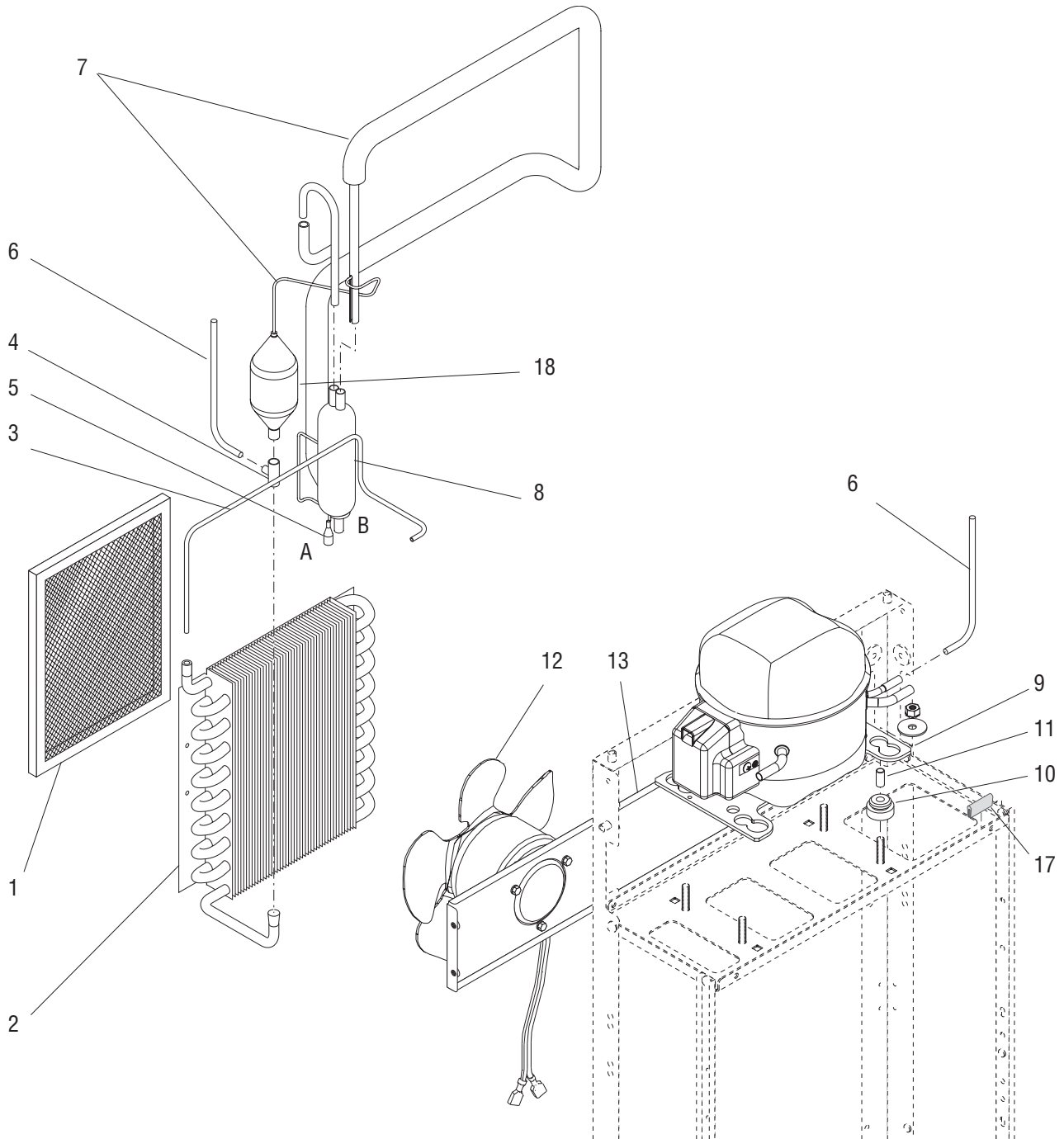


P3859

NOTE: Letters appearing within this illustration correspond to matching connections in other illustrations.

REFRIGERATION COMPONENTS (CUBIGEL COMPRESSOR)

ITEM	PART NO.	QTY.	DESCRIPTION
1	35164.1001	1	Air Filter Assy (Includes item 15)
2	29951.0004	1	Condenser
	02335.0001	4	Screw, Crimptite #8 x .38"
3	00396.0002	1	Tee (Requires brazing to install)
4	35178.0000	1	Adapter (Requires brazing to install)
5	38937.0000	1	Tube (Requires brazing to install)
6	35175.1003	1	Filter Dryer Assy (Requires brazing to install)
7	32776.0000	1	Accumulator
8	-----	1	Compressor (See COMPRESSOR COMPONENTS)
	00901.0000	4	Nut .25"-20
9	-----	4	Grommet
10	-----	4	Sleeve
11	-----	1	Fan Assy (See FAN ASSEMBLY)
	27243.0000	3	Screw #8-36 x .437"
12	34418.0002	1	Bracket
	02308.0000	4	Screw, Pan Head #8-32 x .38"
13	M2546.1000	-	Tape, Tube Insulating (Use as required)
14	M2336.1000	-	Insulation, Tube 25/50 - 0.25"ID x .19" wall x 6.0 Ft (Use as required)
15	12467.1002	-	Velcro, Loop 3.5" (4 pieces)
	12468.1002	-	Velcro, Hook 3.5" (4 pieces)
			} Not Illustrated

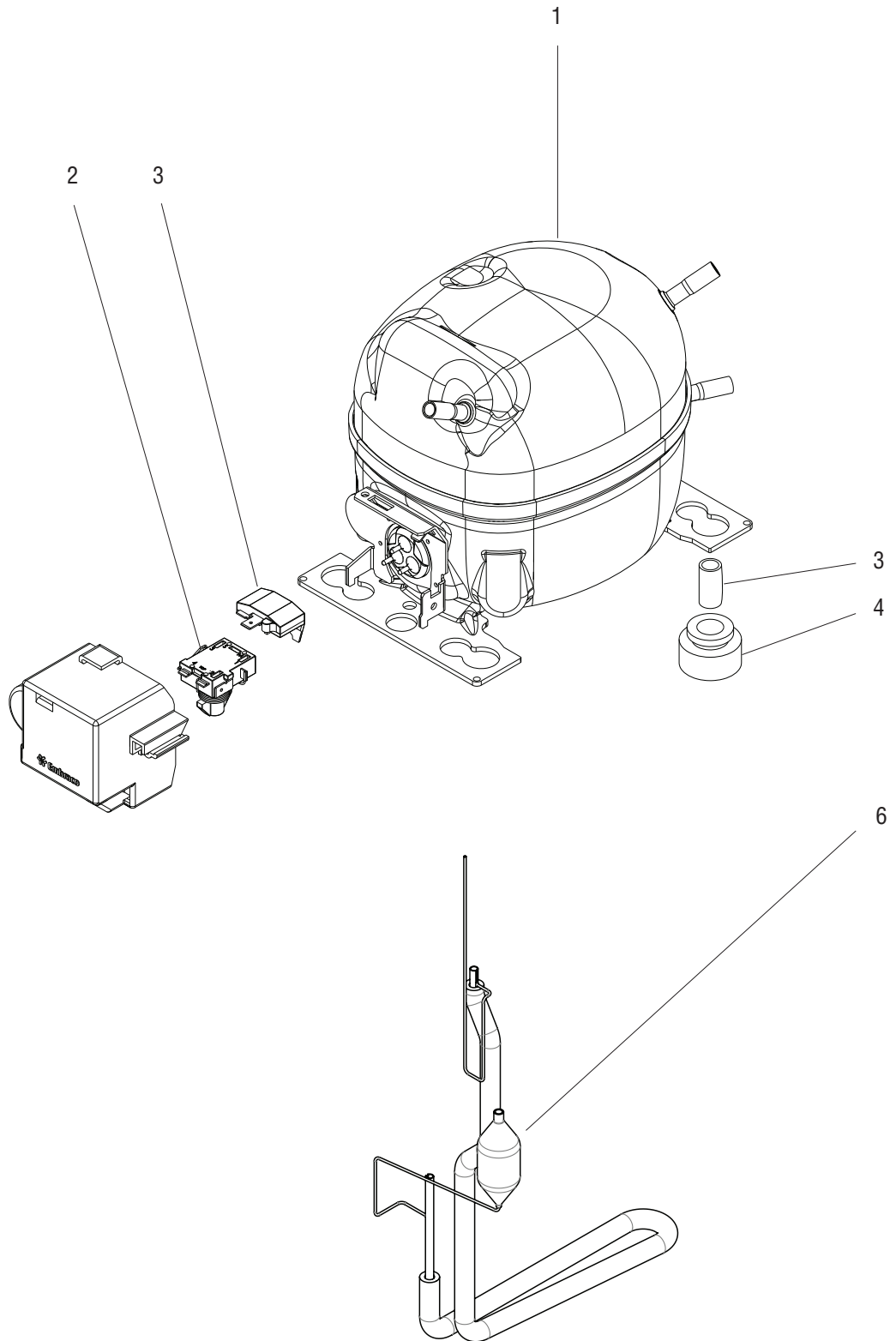


P4299.60

NOTE: Letters appearing within this illustration correspond to matching connections in other illustrations.

REFRIGERATION COMPONENTS (LG COMPRESSOR)

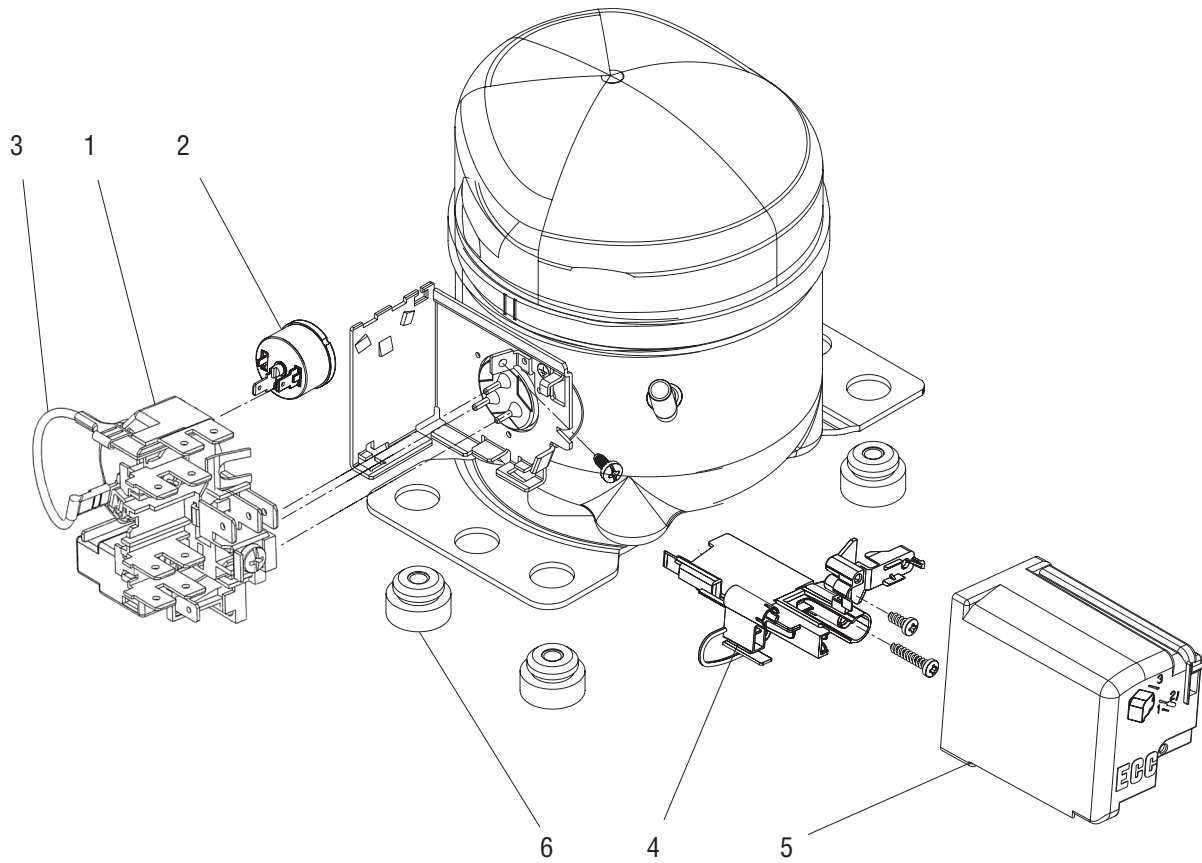
ITEM	PART NO.	QTY.	DESCRIPTION
1	35164.1001	1	Air Filter Assy (Includes item 16)
2	29951.0004	1	Condenser
	02335.0001	4	Screw, Crimptite #8 x .38"
3	46114.0000	1	Tube (Requires brazing to install)
4	00396.0002	1	Tee (Requires brazing to install)
5	35178.0000	1	Adapter (Requires brazing to install)
6	38937.0000	2	Tube (Requires brazing to install)
7	35175.1003	1	Filter Dryer Assy (Requires brazing to install)(Includes item 18)
8	32776.0000	1	Accumulator
9	-----	1	Compressor (See COMPRESSOR COMPONENTS)
	00901.0000	4	Nut .25"-20
10	-----	4	Grommet
11	-----	4	Sleeve
12	-----	1	Fan Assy (See FAN ASSEMBLY)
	27243.0000	3	Screw #8-36 x .437"
13	34418.0002	1	Bracket
	02308.0000	4	Screw, Pan Head #8-32 x .38"
14	M2546.1000	-	Tape, Tube Insulating (Use as required)
15	M2336.1000	-	Insulation, Tube 25/50 - 0.25"ID x .19" wall x 6.0 Ft (Use as required)
16	12467.1002	-	Velcro, Loop 3.5" (4 pieces)
	12468.1002	-	Velcro, Hook 3.5" (4 pieces)
			} Not Illustrated
17		1	Edging 1.0" (Use as required)
18	47140.1000	1	Filter Dryer Kit
19	41105.1000	-	Edging 12.0" (Use as required)



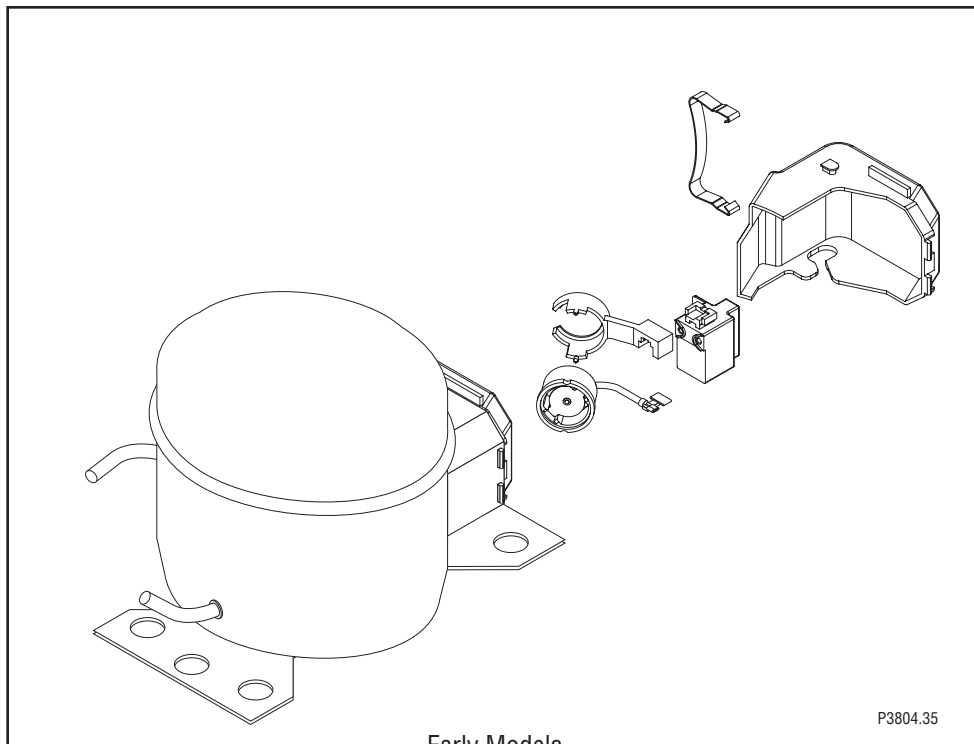
P4361

COMPRESSOR COMPONENTS (EMBRACO)

ITEM	PART NO.	QTY.	DESCRIPTION
1	45950.1000	1	Compressor, EMBRACO 120V 60Hz EMIS70HHR (Includes items 1 - 4)
	45950.1001	1	Compressor, EMBRACO 230V 60Hz EMI70HER (Includes items 1 - 4)
2	45953.0000	1	Relay, Compressor 120V 60Hz EMIS70HHR
	45955.0000	1	Relay, Compressor 230V 60 Hz EMI70HER
3	45952.0000	1	Overload Protector 120V 60Hz EMIS70HHR
	45954.0000	1	Overload Protector 230V 60Hz EMI70HER
4	32797.0000	4	Grommet
5	32798.0000	4	Sleeve
6	34016.1001	1	Filter Dryer Assy, GL90 JDF-4S



P4040.30

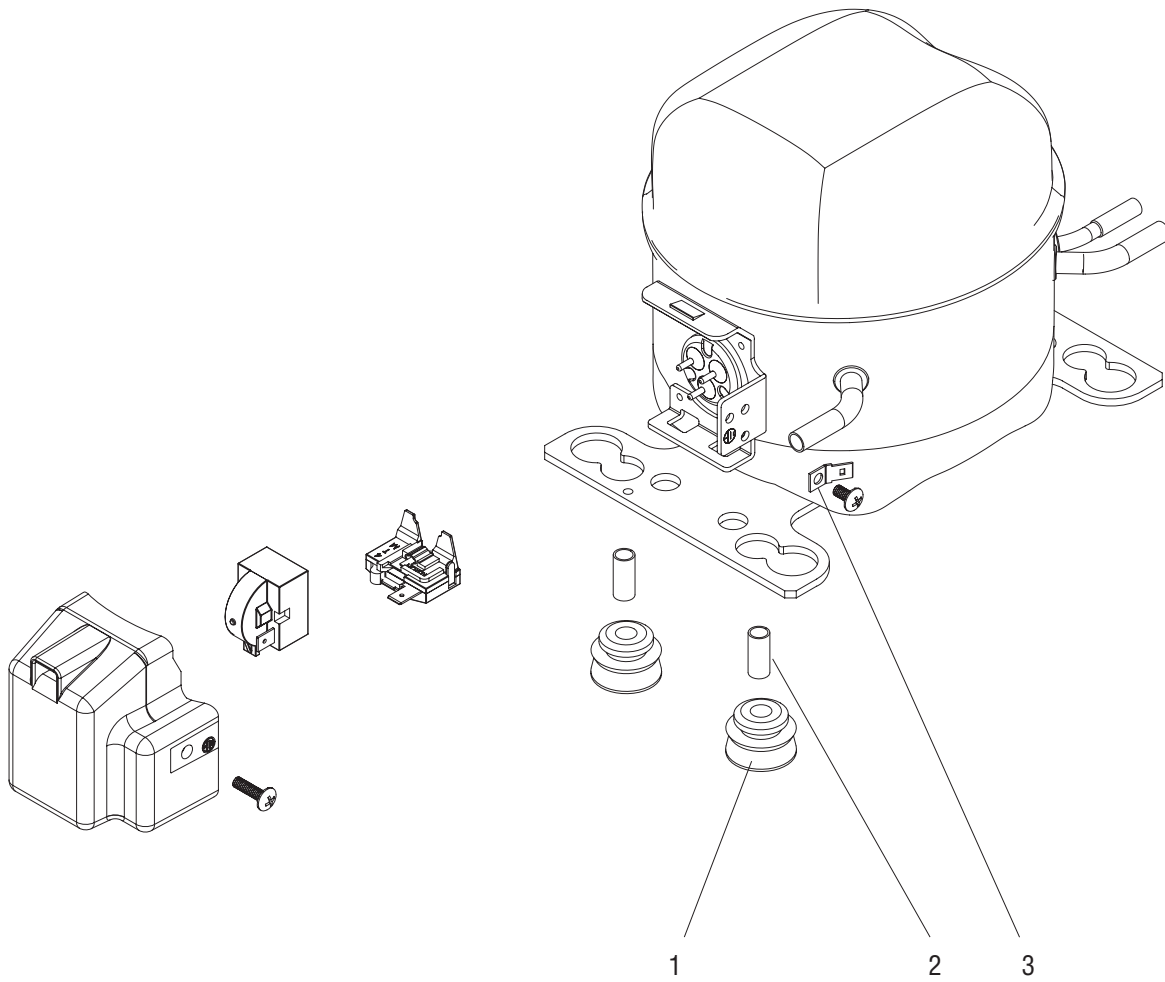


Early Models

P3804.35

COMPRESSOR COMPONENTS (CUBIGEL)

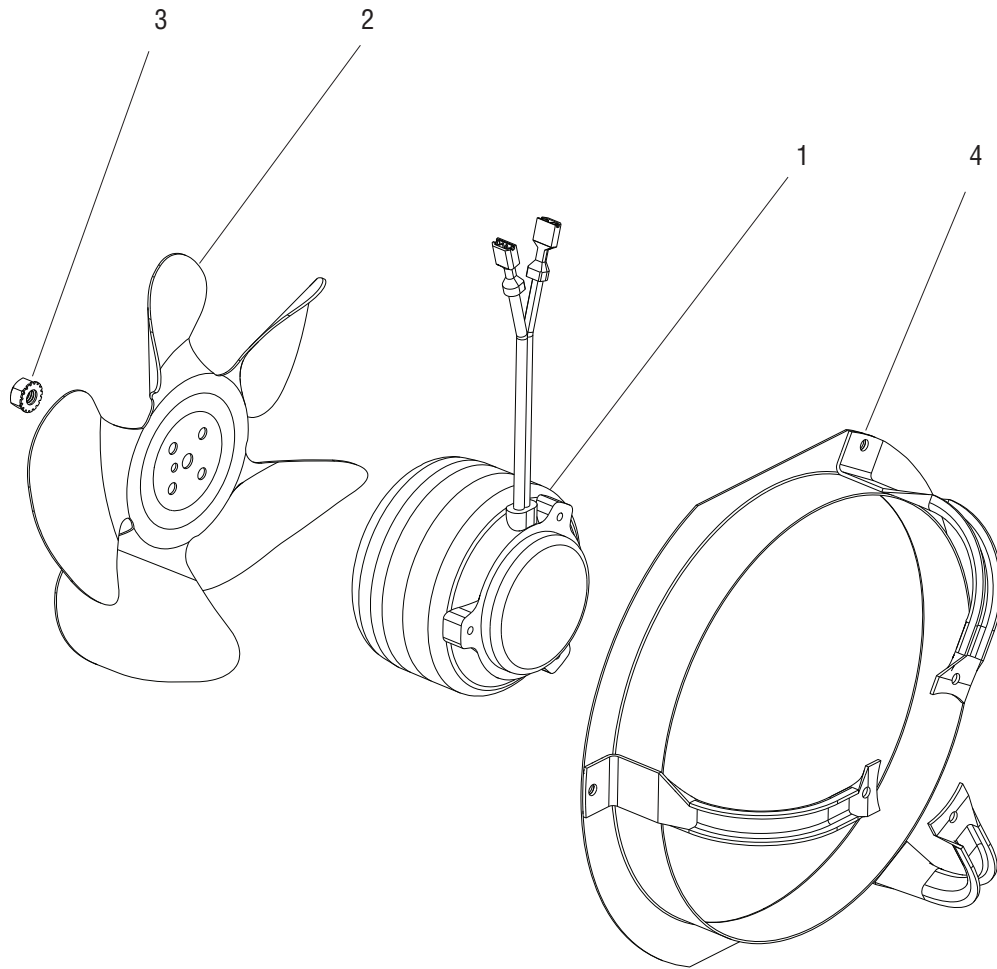
ITEM	PART NO.	QTY.	DESCRIPTION
1	39912.0002	1	Relay 120V, Compressor GD40ME BDG K115/CUBIGEL
	39912.0003	1	Relay 230V, Compressor GD40MB BDG K100/ACC (Appliances Components Companies)
2	39908.0002	1	Overload Protector 120V, GD40ME/CUBIGEL
	39908.0003	1	Overload Protector 230V, GD40MB/ACC (Appliances Components Companies)
3	41398.0000	1	Cable
4	41397.0000	1	Strain Relief
5	39907.0000	1	Cover
6	41396.0000	1	Mounting Kit (Includes 4 Grommets and Sleeves)



P4298.30

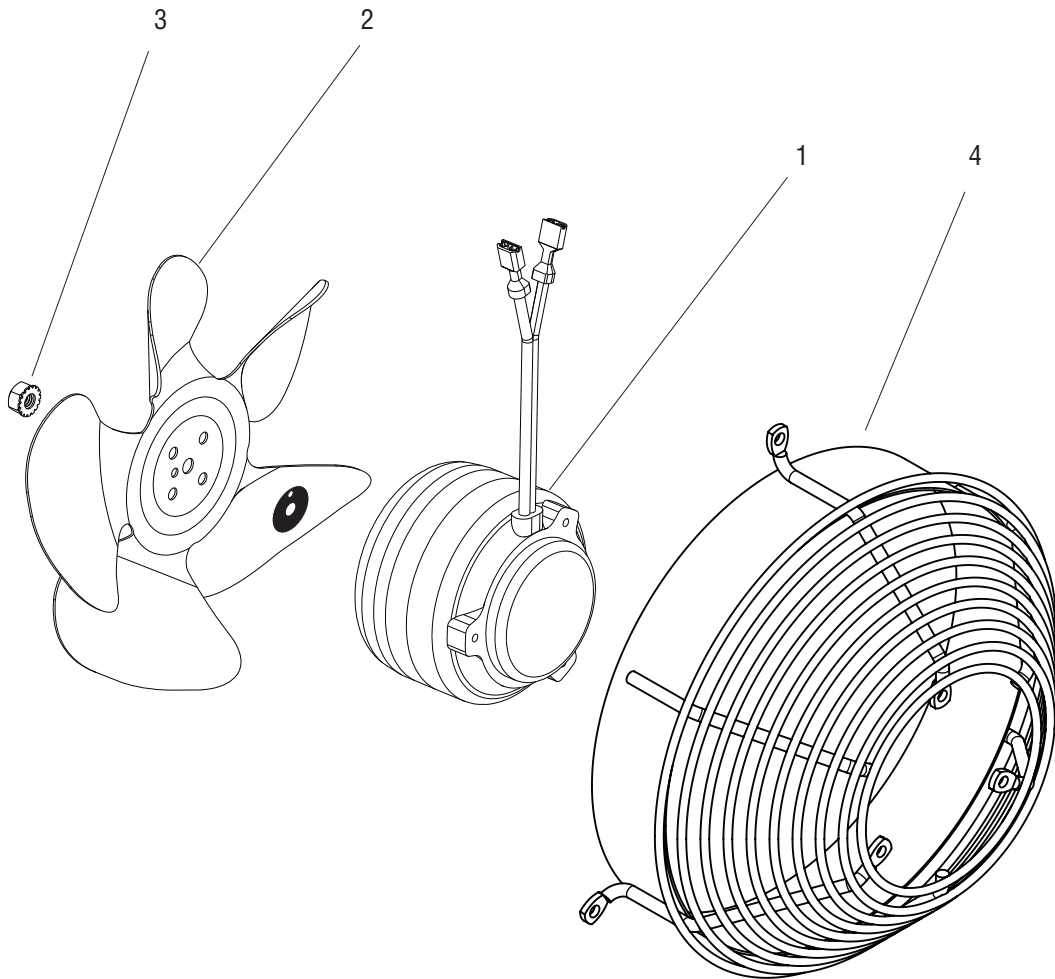
COMPRESSOR COMPONENTS (LG)

ITEM	PART NO.	QTY.	DESCRIPTION
-	45901.1000	1	Compressor 120V (Includes items 1 - 3)
	45901.1001	1	Compressor 230V (Includes items 1 - 3)
1	45897.0000	4	Grommet
2	45896.0000	4	Sleeve
3	36528.0000	1	Terminal Adapter
	39142.0000	1	Screw, Truss Head M4 x 7mm
4	50072.1000	-	Kit, Electrical Components, 120V
	50072.1001	-	Kit, Electrical Components, 230V



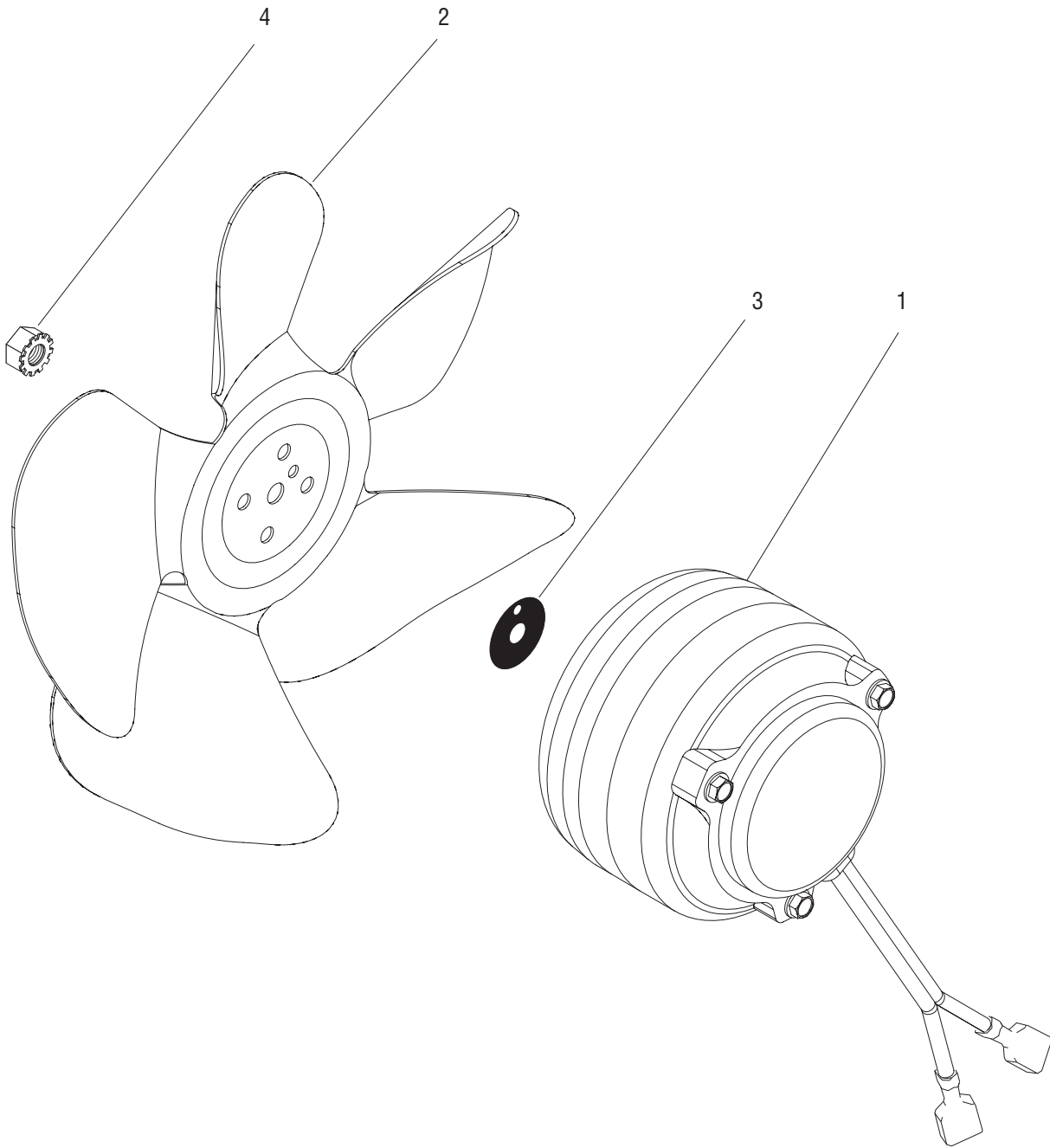
FAN ASSEMBLY (Early Models with EMBRACO Compressor)

ITEM	PART NO.	QTY.	DESCRIPTION
-	49292.1000	1	Fan Assy 120V (Includes items 1-4)
	49292.1001	1	Fan Assy 230V (Includes items 1-4)
1	33603.0000	1	Motor Assy 120V
	33603.0001	1	Motor Assy 230V
2	33602.0000	1	Blade, Fan
3	23700.0000	1	Nut .25"-20
4	33601.0000	1	Shroud, Fan



FAN ASSEMBLY (Late Models with EMBRACO Compressor)

ITEM	PART NO.	QTY.	DESCRIPTION
-	49292.1002	1	Fan Assy with Wire Guard 120V (Includes items 1-4)
	49292.1003	1	Fan Assy with Wire Guard 230V (Includes items 1-4)
1	33603.0000	1	Motor Assy 120V
	33603.0001	1	Motor Assy 230V
2	33602.0000	1	Blade, Fan
3	23700.0000	1	Nut .25"-20
4	52454.0004	1	Wire Guard



FAN ASSEMBLY

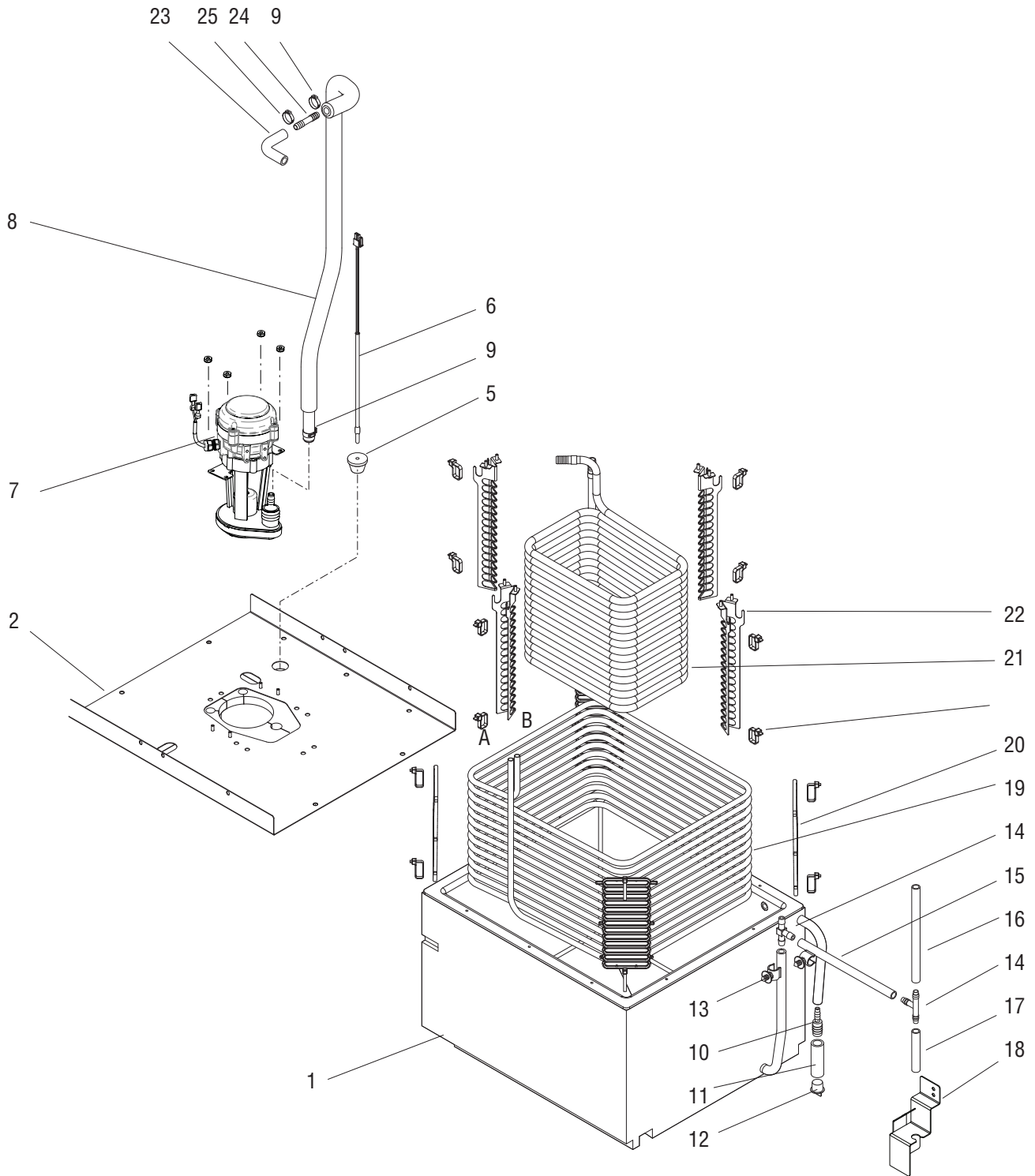
ITEM	PART NO.	QTY.	DESCRIPTION
-	32204.1006	1	Fan Assy 120V (Includes items 1-4)
	32204.1007	1	Fan Assy 230V (Includes items 1-4)
1	33603.0000	1	Motor Assy 120V
	33603.0001	1	Motor Assy 230V
2	39983.0000	1	Blade, Fan
3	27258.0000	1	Silencer
4	23700.0000	1	Nut .25"-20



WATER TANK ASSY

JDF-4S

(Continued)



NOTE: Letters appearing within this illustration correspond to matching connections in other illustrations.

P3860 B

WATER TANK ASSY

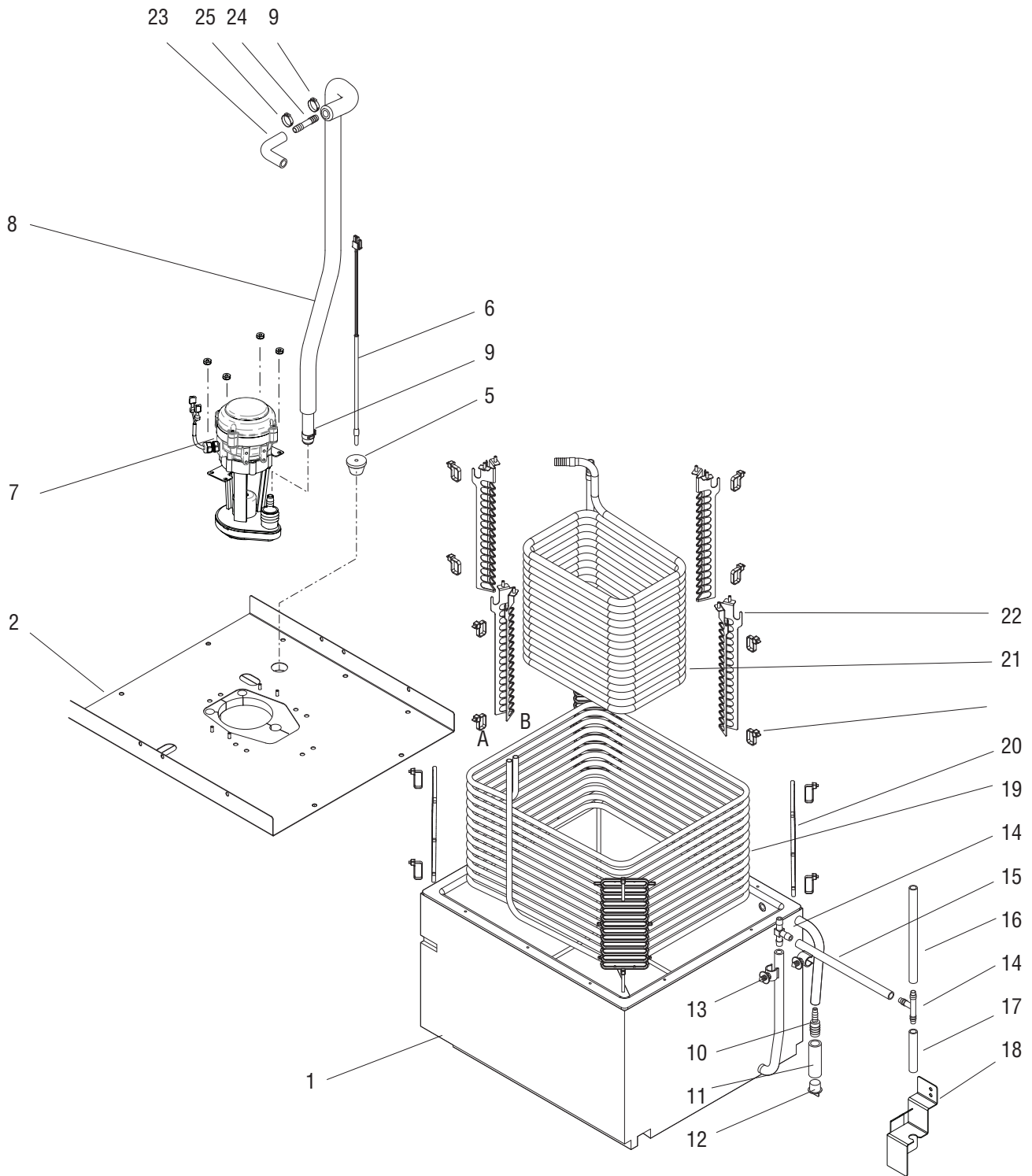
ITEM	PART NO.	QTY.	DESCRIPTION
1	39379.0000	1	Tank Assy
	24544.0000	6	Screw, Pan Head #8-18
2	39382.1000	1	Lid Assy
	24544.0000	10	Screw, Pan Head #8-18
	00973.0001	8	Nut, Keps #6-32
3	-----	-	
4	-----	-	
5	33801.0003	1	Grommet
6	28891.1000	1	Probe, Temperature
7	53761.1000	1	Kit, Recirc Pump 120/230VAC - Seald Brng (Includes Item 3 & 4)
	00973.0001	4	Nut, Keps #6-32
8		1	Tube, Silicone .313 ID x 22.00 LG (Models with EMBRACO Comp: Order item 27)
		-	Insulation, Tube 1/2IDX3/16W (Order item 26)
9	21275.0013	2	Clamp, SST-.539/.638 DIA#16.2 Light Blue
10	38924.0001	1	Reducer .50" to .38" Barb
11		1	Hose, Flex .38" ID x .625" OD x 3.0" (Order item 29)
12	38925.0000	1	Plug
13	27410.0000	3	Clip, Tube Mounting
14	35077.0000	2	Tee .375" Barb
15		1	Tube, Silicone .312" ID x 6.0" (Order item 28)
16		1	Tube, Silicone .312" ID x 5.5" (Order item 28)
17		1	Tube, Silicone .312" ID x 3.25" (Order item 28)
18	38662.0001	1	Bracket
	02308.0000	2	Screw, Pan Head #8-32 x .38"
19	47581.0001	1	Evaporator Coil Assy (Includes items 20 & Ties)
20	32583.0000	4	Spacer
21	39386.0002	1	Product Coil
22	39467.0000	4	Spacer
23	45928.0000	1	Elbow
24	51902.0000	1	Connector, Union .38 X .38 KYNAR
25	12422.0001	1	Clamp, Hose-Snap Type .59/.66ID

(Continued)



WATER TANK ASSY

JDF-4S



NOTE: Letters appearing within this illustration correspond to matching connections in other illustrations.

P3860 B

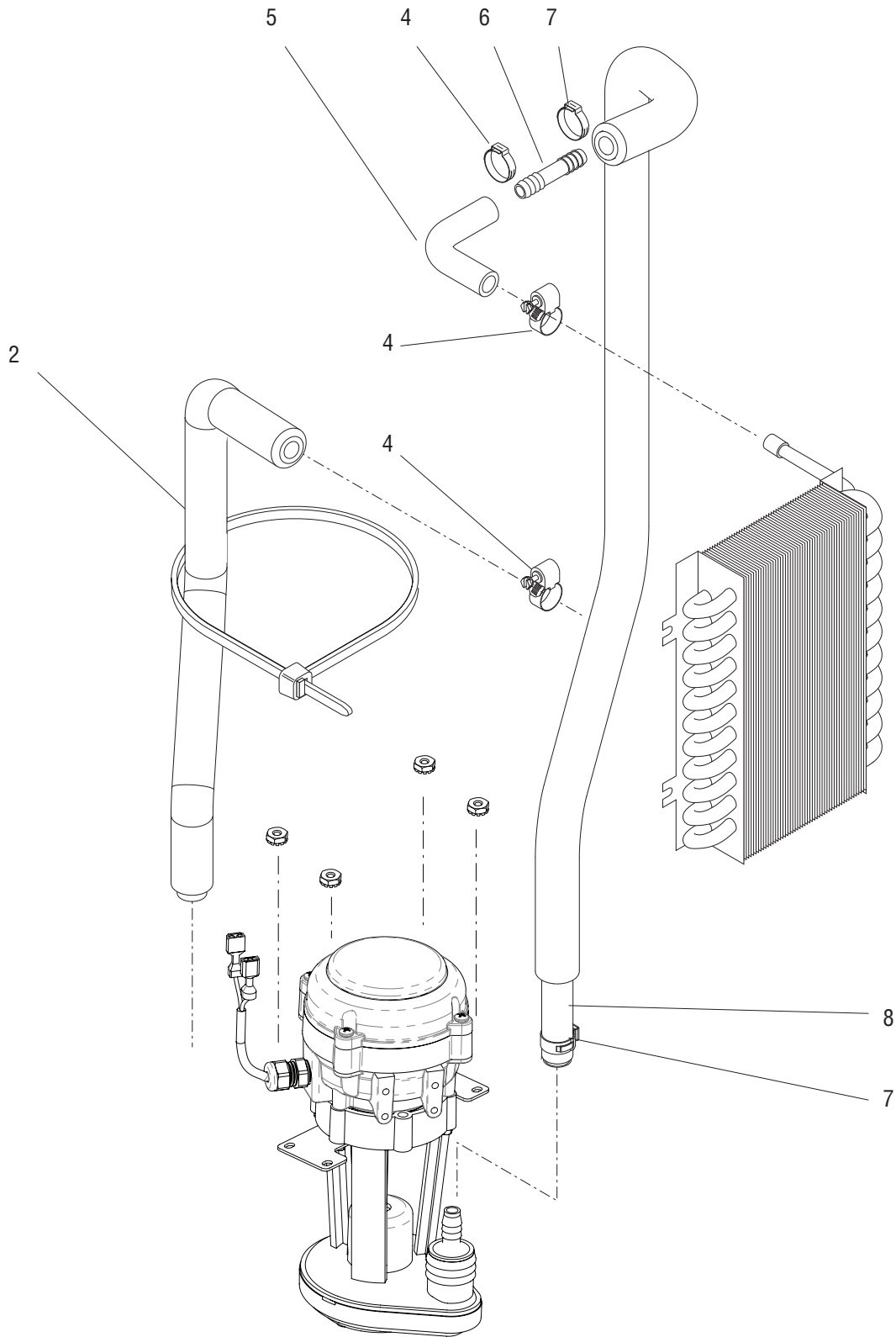
WATER TANK ASSY

ITEM	PART NO.	QTY.	DESCRIPTION
The following items are not illustrated			
26	M2337.1000	-	Insulation, Tube 25/50 .50" ID x 72.0" (Cut to required length)
27	28526.1000	-	Tube, Silicone .313 ID x 12.00 LG (Cut to required length)
	28526.1001	-	Tube, Silicone .313 ID x 36.00 LG (Cut to required length)
	28526.1002	-	Tube, Silicone .313 ID x 60.00 LG (Cut to required length)
	28526.1003	-	Tube, Silicone .313 ID x 120.00 LG (Cut to required length)
28	34315.1000	-	Hose, Clear PVC .312" ID x .50" OD x 12.0" (Cut to required length)
	34315.1001	-	Hose, Clear PVC .312" ID x .50" OD x 36.0" (Cut to required length)
	34315.1002	-	Hose, Clear PVC .312" ID x .50" OD x 120.0" (Cut to required length)
29	32591.1001	-	Hose, Silicone .50" ID x .625" OD x 12.0" (Cut to required length)
	32591.1002	-	Hose, Silicone .50" ID x .625" OD x 36.0" (Cut to required length)



CIRCULATION PUMP & LINES

JDF-4S



P3861 B

CIRCULATION PUMP & LINES

ITEM	PART NO.	QTY.	DESCRIPTION
1	-----	1	Coil, Upper Cabinet (See UPPER CABINET & PANELS)
2	-----	1	Tube, Silicone .313 ID x 20.00 LG (Order item 27)
		-	Insulation, Tube 1/2IDx3/16W (Order item 26)
3	-----	1	Pump, Circulation (See WATER TANK ASSEMBLY)
4	29421.0000	2	Clamp, Hose Worm Drive .625/.75" (Early Models)
	12422.0001	4	Clamp (Late Models)
5	45928.0000	1	Elbow
6	51902.0000	1	Connector, Union .38 X .38 KYNAR
7	21275.0013	2	Clamp, SST-.539/.638 DIA#16.2 Light Blue
8	-----	1	Tube, Silicone 313 ID x 22.00 LG (Order item 27)
		-	Insulation, Tube 1/2IDx3/16W (Order item 26)

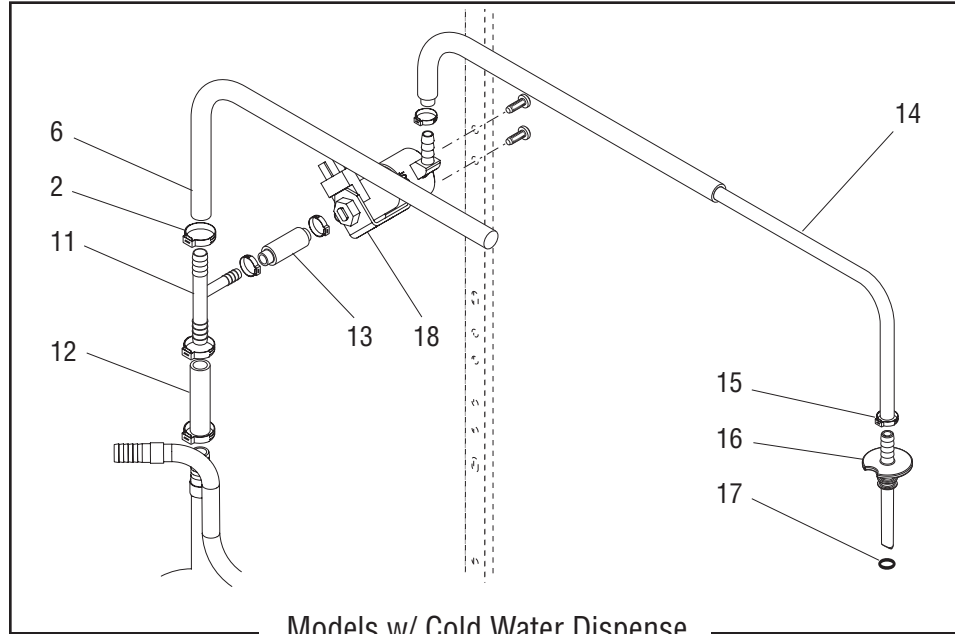
The following items are not illustrated

26	M2337.1000	-	Insulation, Tube 25/50 .50" ID x 72.0" (Cut to required length)
27	28526.1000	-	Tube, Silicone .313 ID x 12.00 LG (Cut to required length)
	28526.1001	-	Tube, Silicone .313 ID x 36.00 LG (Cut to required length)
	28526.1002	-	Tube, Silicone .313 ID x 60.00 LG (Cut to required length)
	28526.1003	-	Tube, Silicone .313 ID x 120.00 LG (Cut to required length)

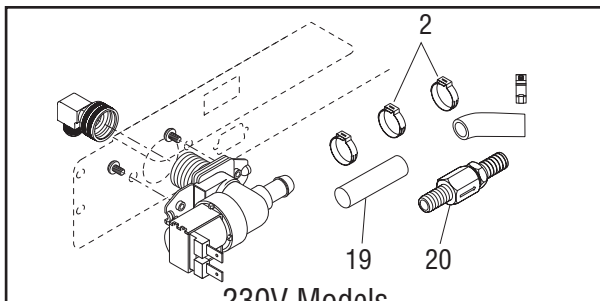
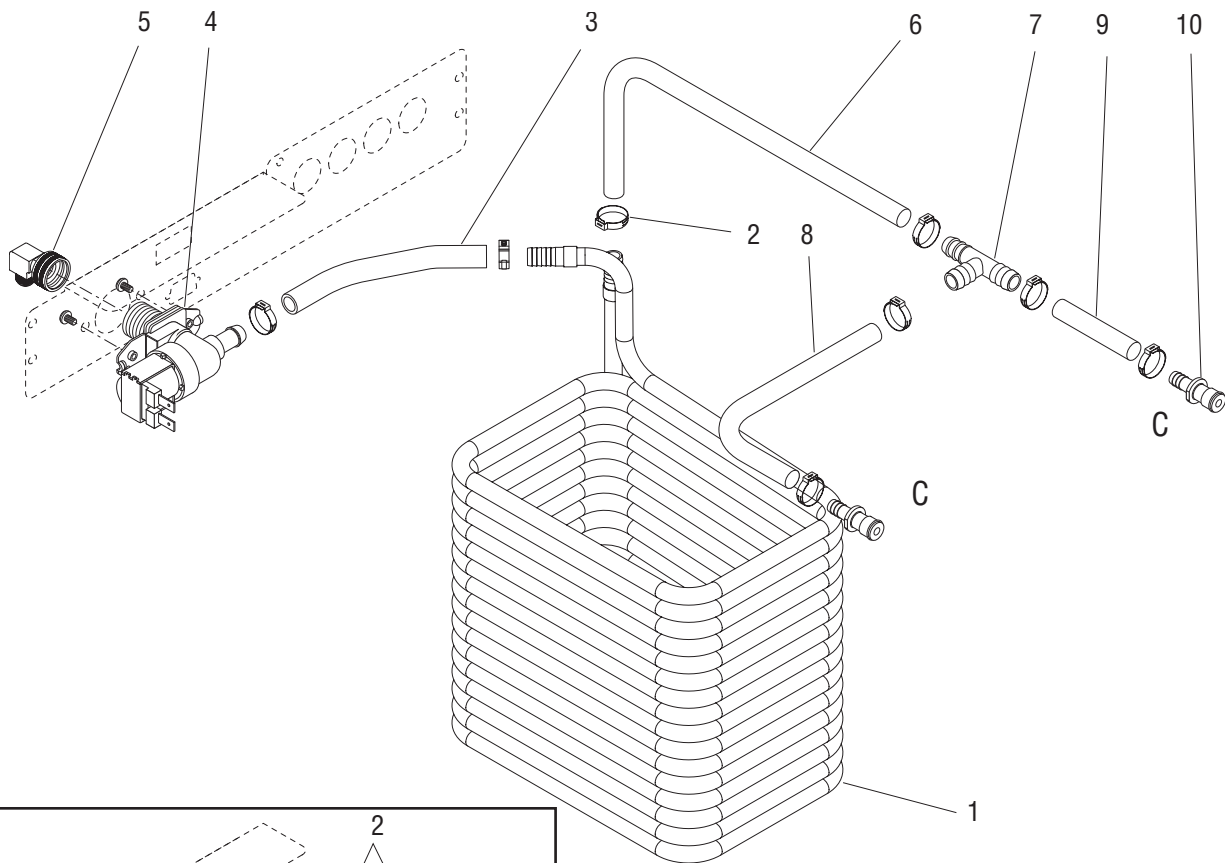


PRODUCT COIL & LINES

JDF-4S



Models w/ Cold Water Dispense



230V Models

NOTE: Letters appearing within this illustration correspond to matching connections in other illustrations.

P3862

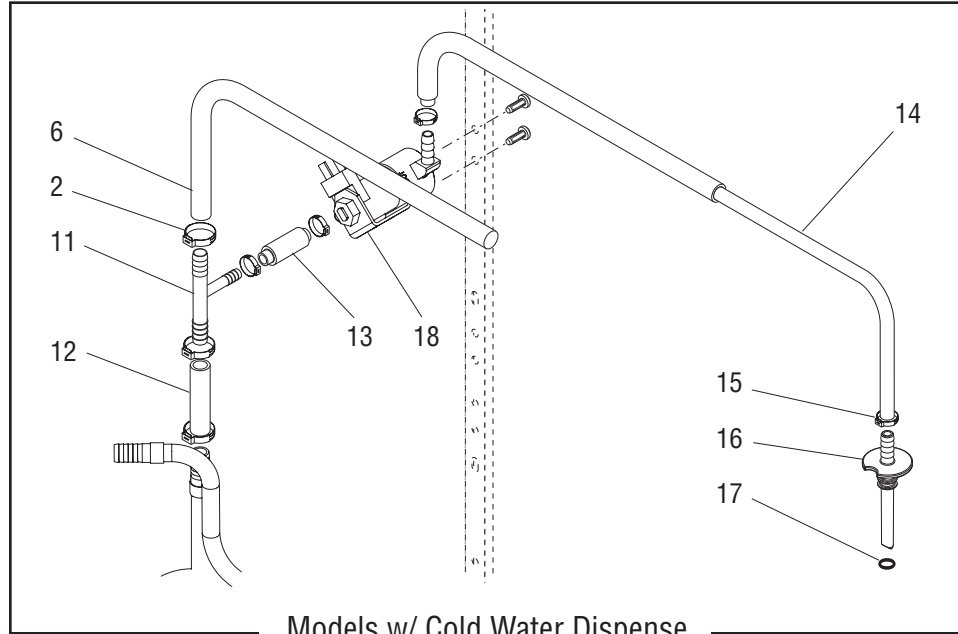
PRODUCT COIL & LINES

ITEM	PART NO.	QTY.	DESCRIPTION
1	-----	1	Product Coil (See WATER TANK ASSEMBLY)
2	21275.0003	8	Clamp .57" - .70" (Two additional used on 230V models)
3		1	Hose, Flex .38" ID x 6.5" (Order item 27)
	21275.0013	2	Clamp, SST-.539/.638 DIA#16.2 Light Blue
4	36233.0005	1	Valve, Water Inlet 120V
	36233.0006	1	Valve, Water Inlet 230V
	32283.0000	2	Screw, Pan Head M4 x 6mm
			} See item 26
5	37297.1001	1	Fitting, Elbow .38" FI x .75" Fine Hose (Includes Gasket)
	41640.0000	1	Gasket
6		1	Hose, Flex .375" ID x 12.0" Braid (Order item 21)(Models w/o Cold Water Dispense)
		1	Hose, Flex .375" ID x 9.25" Braid (Order item 21)(Models w/ Cold Water Dispense)
7	35077.0000	1	Tee .375" Barb
8		1	Hose, Flex .375" ID x 5.75" Braid (Order item 21)
9		1	Hose, Flex .375" ID x 1.50" Braid (Order item 21)
10	34462.0000	2	Coupling, Quick Disconnect, Male
11	51956.0000	1	Tee, Nylon .38" x .38" x .25" Barb
12		1	Hose, Flex .375" ID x 1.5" Braid (Order item 21)
13		1	Hose, Braided .25" ID x 4.0" 120V (Order item 22)
		1	Hose, Braided .25" ID x 3.50" 230V (Order item 22)
14		1	Hose, Braided .25" ID x 23.0" 120V (Order item 22)
		1	Hose, Braided .25" ID x 26.0" 230V (Order item 22)
15	21275.0006	4	Clamp .45" - .55"
16	39509.0001	1	Nozzle, Cold Water
17	32851.0000	1	O-ring
18	28378.1021	1	Valve w/Fittings, Solenoid 120V
	01326.0002	2	Screw, Truss Head, Locking #10-32 x .312"
	28006.1008	1	Valve w/Fittings, Solenoid 230V
	02308.0000	2	Screw, Pan Head #8-32 x .38" (Early Models)
	52282.0000	2	Screw, Pan Head M3 x 10mm (Late Models)
	01501.0000	2	Washer
19		2	Hose, Flex .375" ID x 2.50" Braid (Order item 21) (230V)
20	40071.0001	1	Check Valve (230V)
21	34325.1000	-	Hose, Flex .375" ID x .625" OD x 12.0" Braid (Cut to required length)
	34325.1001	-	Hose, Flex .375" ID x .625" OD x 36.0" Braid (Cut to required length)
	34325.1002	-	Hose, Flex .375" ID x .625" OD x 120.0" Braid (Cut to required length)
22	38129.1000	1	Hose, Braided .25" ID x 12.0" (Cut to required length)
	38129.1001	1	Hose, Braided .25" ID x 36.0" (Cut to required length)
	38129.1002	1	Hose, Braided .25" ID x 120.0" (Cut to required length)
23	M2337.1000	-	Insulation, Tube 25/50 .50" ID x 72.0" (Cut to required length)
24	M2336.1000	-	Insulation, Tube 25/50 .38" ID x 72.0" (Cut to required length)
25	39924.1000	-	Hose Assy 120V (Includes items 2, 6 - 17, 21 & 22)
	39924.1001	-	Hose Assy 230V (Includes items 2, 6 - 17, 21 & 22)

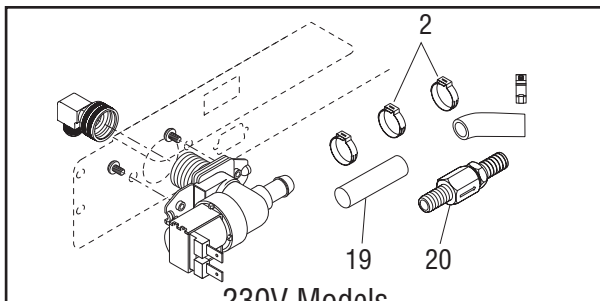
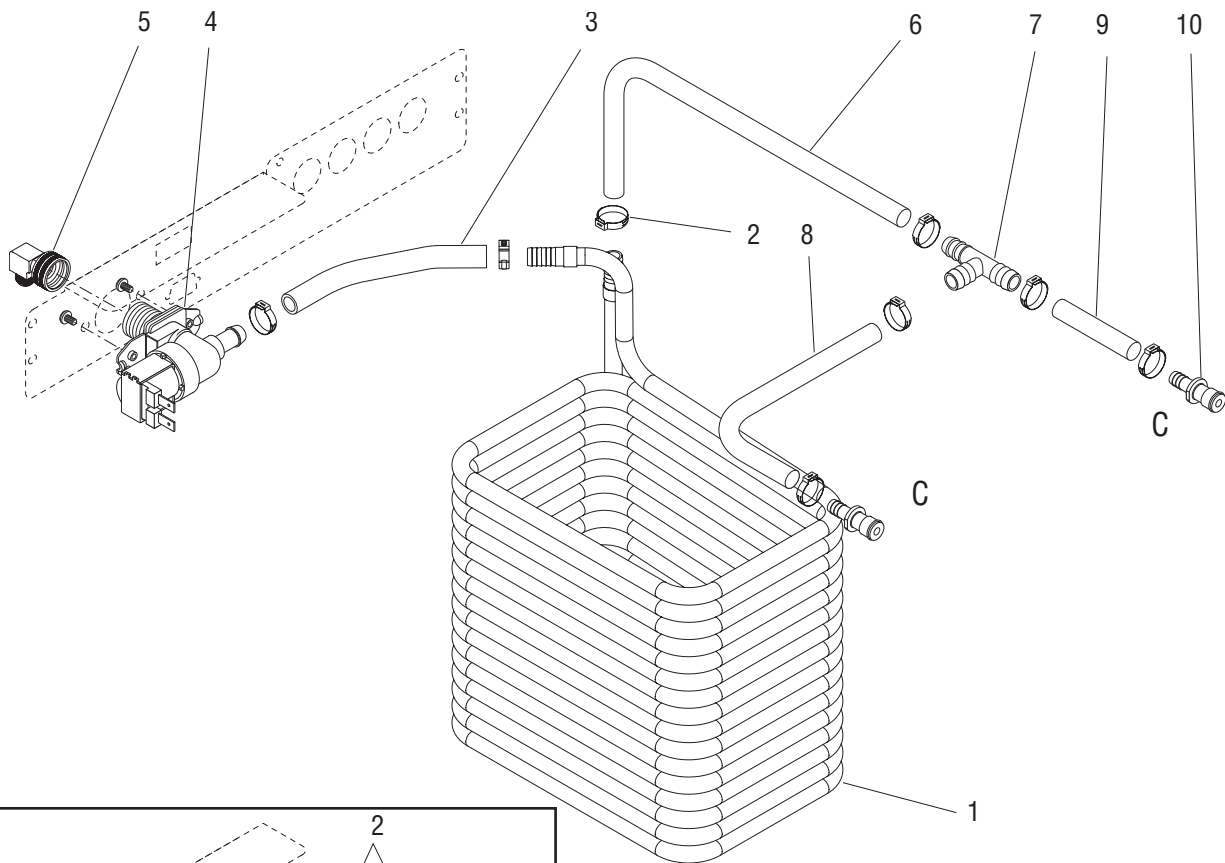


PRODUCT COIL & LINES

JDF-4S



Models w/ Cold Water Dispense



230V Models

NOTE: Letters appearing within this illustration correspond to matching connections in other illustrations.

P3862

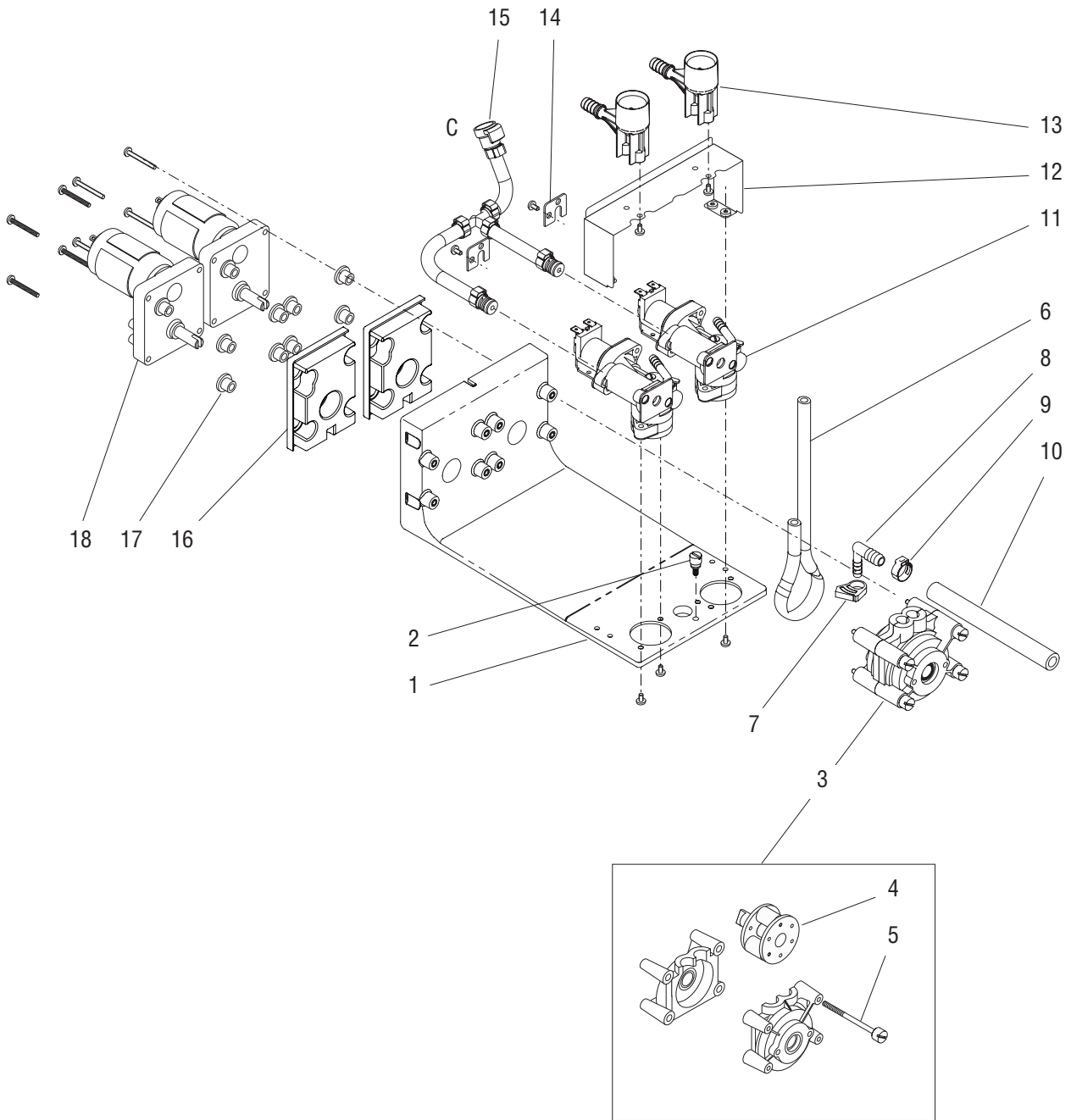
PRODUCT COIL & LINES

ITEM	PART NO.	QTY.	DESCRIPTION
26	43644.0000	-	Kit, Valve Rebuild (Not Illustrated)
27	54496.1000	-	Hose, Flex .38" ID x 12.0" Braided Wht Line (Cut to required length)
	54496.1001	-	Hose, Flex .38" ID x 36.0" Braided Wht Line (Cut to required length)
	54496.1002	-	Hose, Flex .38" ID x 120.0" Braided Wht Line (Cut to required length)



DISPENSE PLATFORM ASSEMBLY

JDF-4S



P3623

NOTE: Letters appearing within this illustration correspond to matching connections in other illustrations.

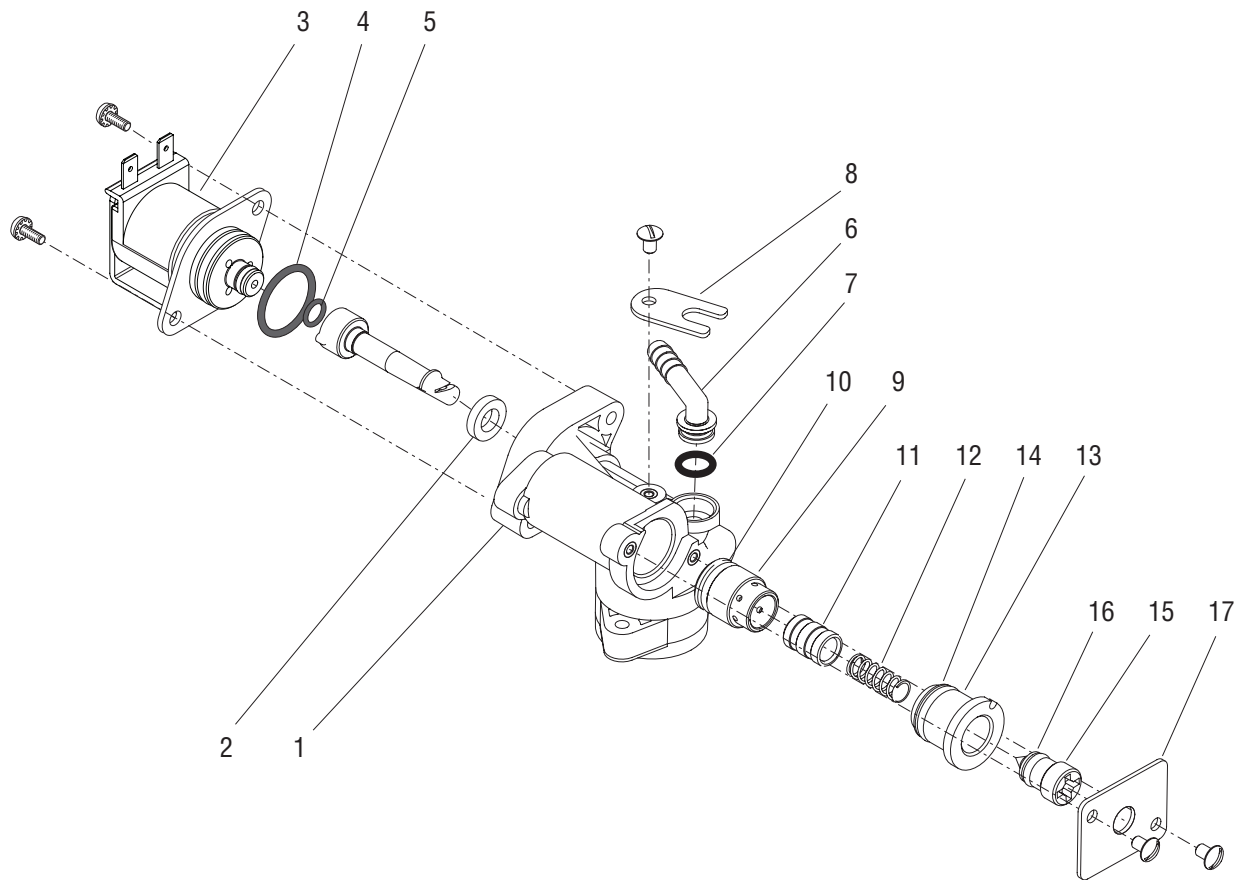
DISPENSE PLATFORM ASSEMBLY

ITEM	PART NO.	QTY.	DESCRIPTION
-	38474.1000	2	Platform Assy (Each includes items 1 - 19)
1	38121.0003	1	Platform
2	38104.0000	1	Thumbscrew
3	28759.0000	2	Pump Head (Includes items 4 & 5)
4	28794.0000	2	Rotor
5	01370.0001	8	Screw, Pan Head #8-32 x 2.45"
6	28755.1011	2	Tube, Norprene .25" ID x 17.0" lg
7	12422.0011	2	Hose-Snap Type.40/.45ID
8	32656.0000	2	Fitting, Elbow .25" Barb x .38" Barb
9	21275.0012	8	Clamp, SST-.563/.661 DIA#16.8 Green
10		2	Tube, Silicone .38ID x .62OD x 5.25 (Order item 20)
11	38018.1001	2	Dispense Valve (See DISPENSE VALVE)
	01308.0000	4	Screw, Truss Head #6-32 x 25"
12	38660.0001	1	Bracket
	01308.0000	4	Screw, Truss Head #6-32 x 25"
13	38120.0005	2	Fitting, Bottle Adapter
	01308.0000	4	Screw, Truss Head #6-32 x 25"
14	37786.0001	2	Plate
	01308.0000	2	Screw, Truss Head #6-32 x 25"
15	-----	1	Manifold, Plain Water (See PLAIN WATER MANIFOLD)
16	33781.0000	2	Gasket
17	32957.0000	8	Bushing, Rubber
18	32613.1003	2	Motor Assy
	01322.0001	8	Screw #8-32 x 1.25"
The following items are not illustrated			
19	38873.0001	2	Harness, Dispense Platform
20	20976.1000	-	Tube, Silicone - .375ID x 12.0" LG (Cut to required length)
	20976.1001	-	Tube, Silicone - .375ID x 36.0" LG (Cut to required length)
	20976.1002	-	Tube, Silicone - .375ID x 120.0" LG (Cut to required length)
21	39690.0000	-	Pump Tube (Includes items 6,7,8,9 & 10)



DISPENSE VALVE ASSEMBLY

JDF-4S



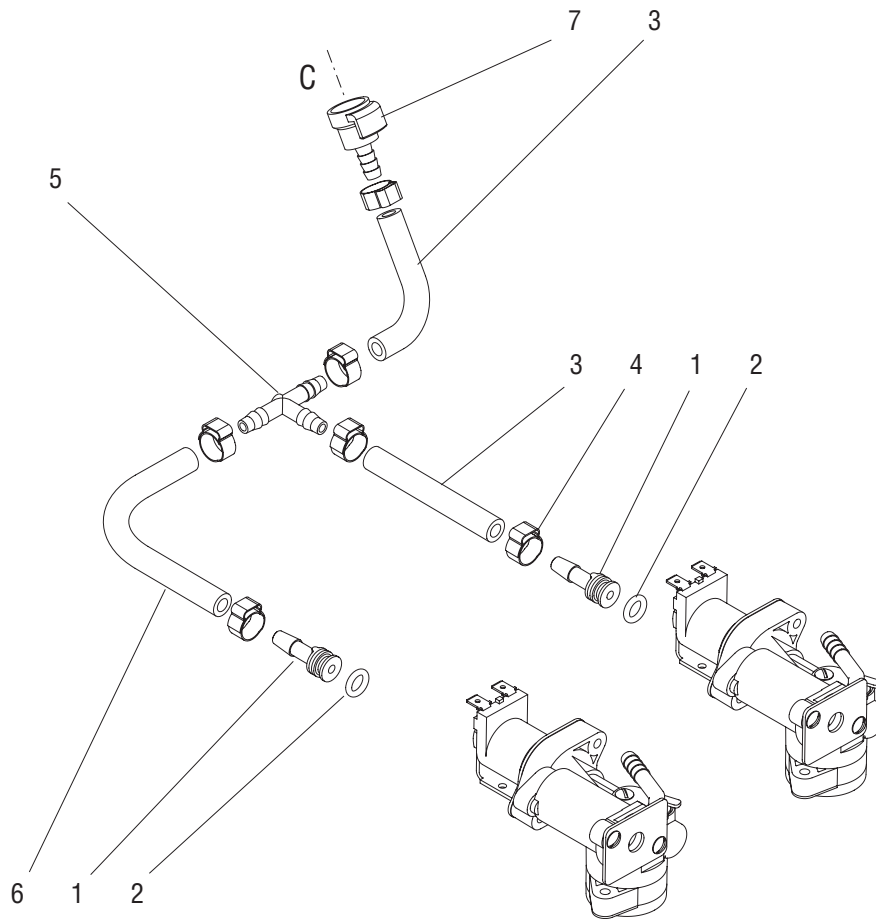
DISPENSE VALVE ASSEMBLY

ITEM	PART NO.	QTY.	DESCRIPTION
-	38018.1001	1	Dispense Valve Assy (Includes items 1 - 18)
1	37801.0003	1	Body
2	37990.0000	1	Seal
3	32252.0001	1	Valve, Solenoid (Includes items 4 & 5)
	01347.0000	2	Screw, Truss Head 6-32 x .38"
4	33580.0000	1	O-ring
5	33553.0000	1	O-ring
6	32463.0000	1	Fitting, Elbow
7	32849.0001	1	O-ring (Also use item 18)
8	37853.0000	1	Clamp
	01308.0000	1	Screw #6-32 x .25"
9	32603.0000	1	Sleeve
10	24733.0006	1	O-ring (Also use item 18)
11	32602.0000	1	Piston
12	32853.0001	1	Spring, Flow Control
13	32624.0002	1	Bonnet, Adjuster
14	24733.0017	1	O-ring (Also use item 18)
15	32623.0002	1	Adjuster, Position
16	32851.0000	1	O-ring (Also use item 18)
17	37977.0000	1	Bracket, Water Adjustment
	01308.0000	2	Screw #6-32 x .25"
18	44023.0000	-	Lube, Silicone (Use when assembling items 7,10,14 & 16)



PLAIN WATER MANIFOLD

JDF-4S



P3624

NOTE: Letters appearing within this illustration correspond to matching connections in other illustrations.

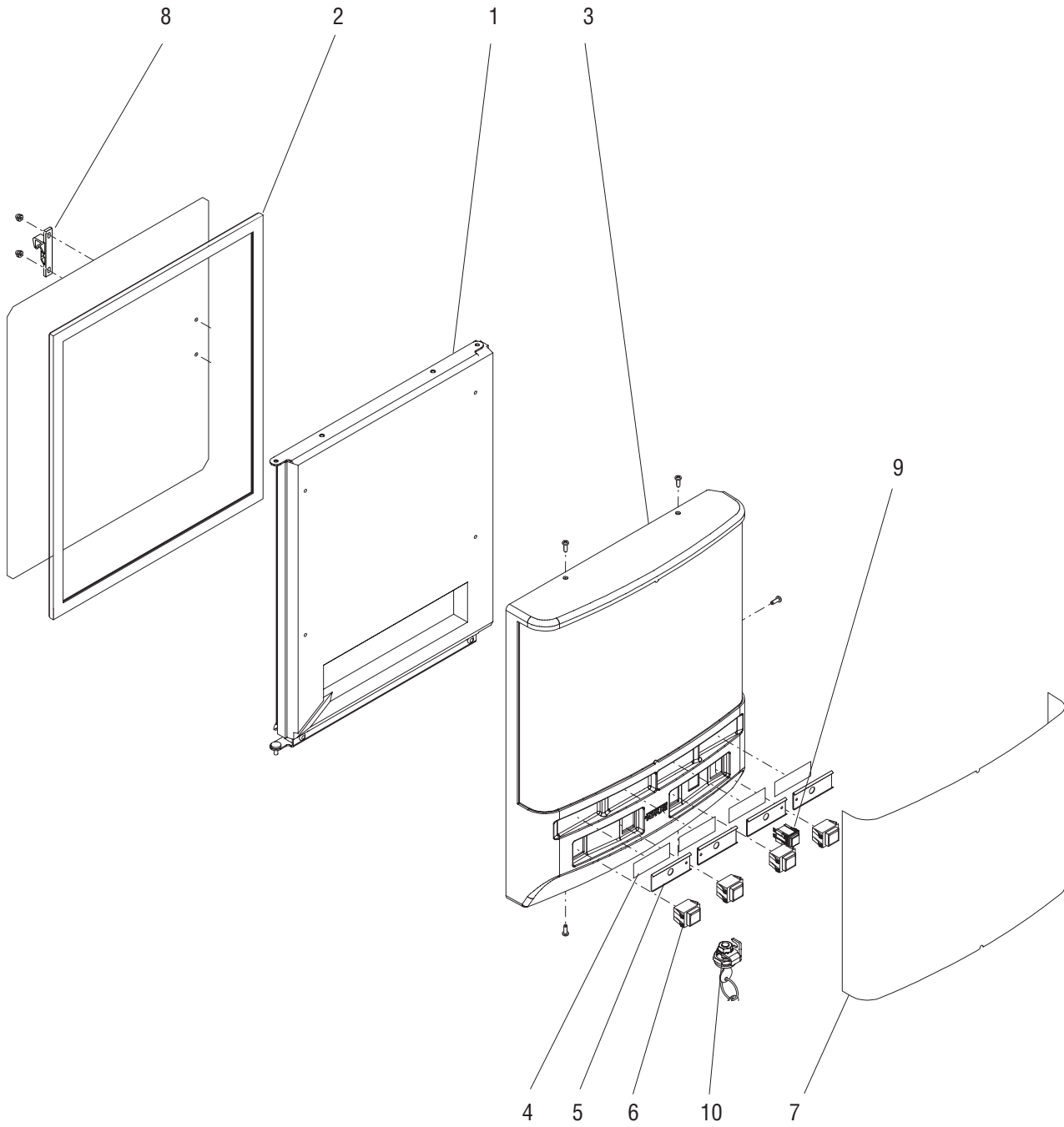
PLAIN WATER MANIFOLD

ITEM	PART NO.	QTY.	DESCRIPTION
1	32631.0004	4	Fitting, Straight
2	32849.0001	4	O-ring
3		4	Hose, Braided .25" ID x 3.0" (Order item 8)
4	21275.0006	12	Clamp .45 - .55"
5	38605.0000	2	Tee .25" Barb
6		2	Hose, Braided .25" ID x 5.25" (Order item 8)
7	34461.0000	2	Coupling, Quick Disconnect, Female
8	38129.1000	1	Hose, Braided .25" ID x 12.0" (Cut to required length)
	38129.1001	1	Hose, Braided .25" ID x 36.0" (Cut to required length)
	38129.1002	1	Hose, Braided .25" ID x 120.0" (Cut to required length)



DOOR ASSEMBLY - UNLIT

JDF-4S



P3863

DOOR ASSEMBLY - UNLITED

ITEM	PART NO.	QTY.	DESCRIPTION
1	49990.0002	1	Door, Inner (Includes item 2)
2	38568.0003	1	Gasket, Door
3	39420.0003	1	Cover, Door Front
	02331.0001	5	Screw, Truss Head, Blk #10-32 x .375"
4	32819.0001	4	Strip, Adhesive
5	37018.0001	4	Flavor Label Holder
6	28296.0002	4	Switch, Dispense
7	39407.0000	1	Decal, Door Wrap (BUNN Juice)
	39407.0001	1	Decal, Door Wrap (BUNN Iced Coffee)
8	34667.0001	1	Keeper, Door Latch
	02319.0000	2	Nut, Acorn
	01501.0000	2	Washer
9	39408.0000	1	Switch, Cold Water Dispense
10	34472.1002	1	Key Lock (Includes 2 keys)
	28095.0000	1	Key Set

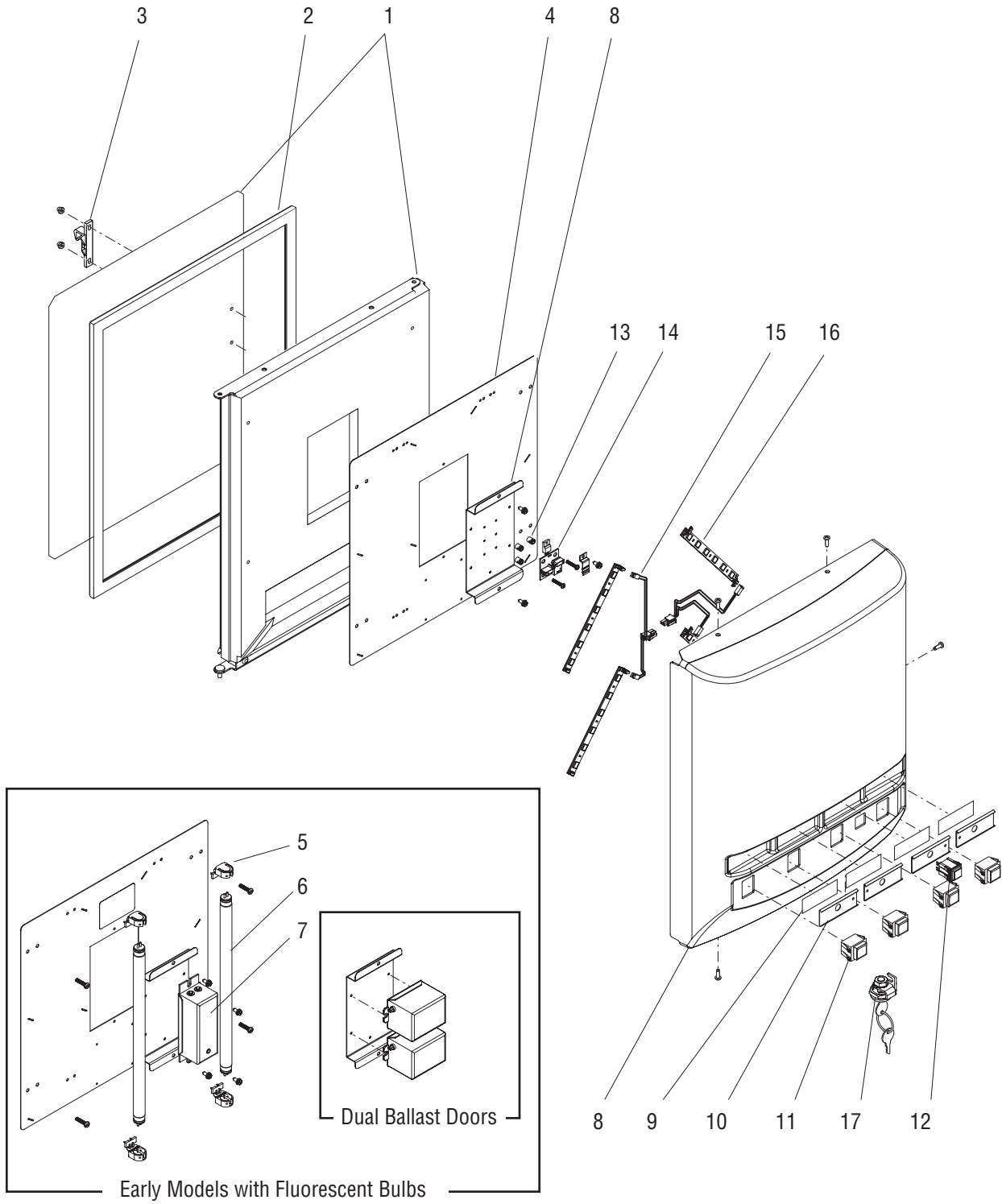
The following items are not illustrated

11	39739.0000	1	Wiring Harness, Switches
12	32861.0000	-	Decals, Flavor (BUNN Juice)
	32861.0001	-	Decals, Flavor (BUNN Iced Coffee)



DOOR ASSEMBLY - LITED w/MECHANICAL SWITCHES

JDF-4S



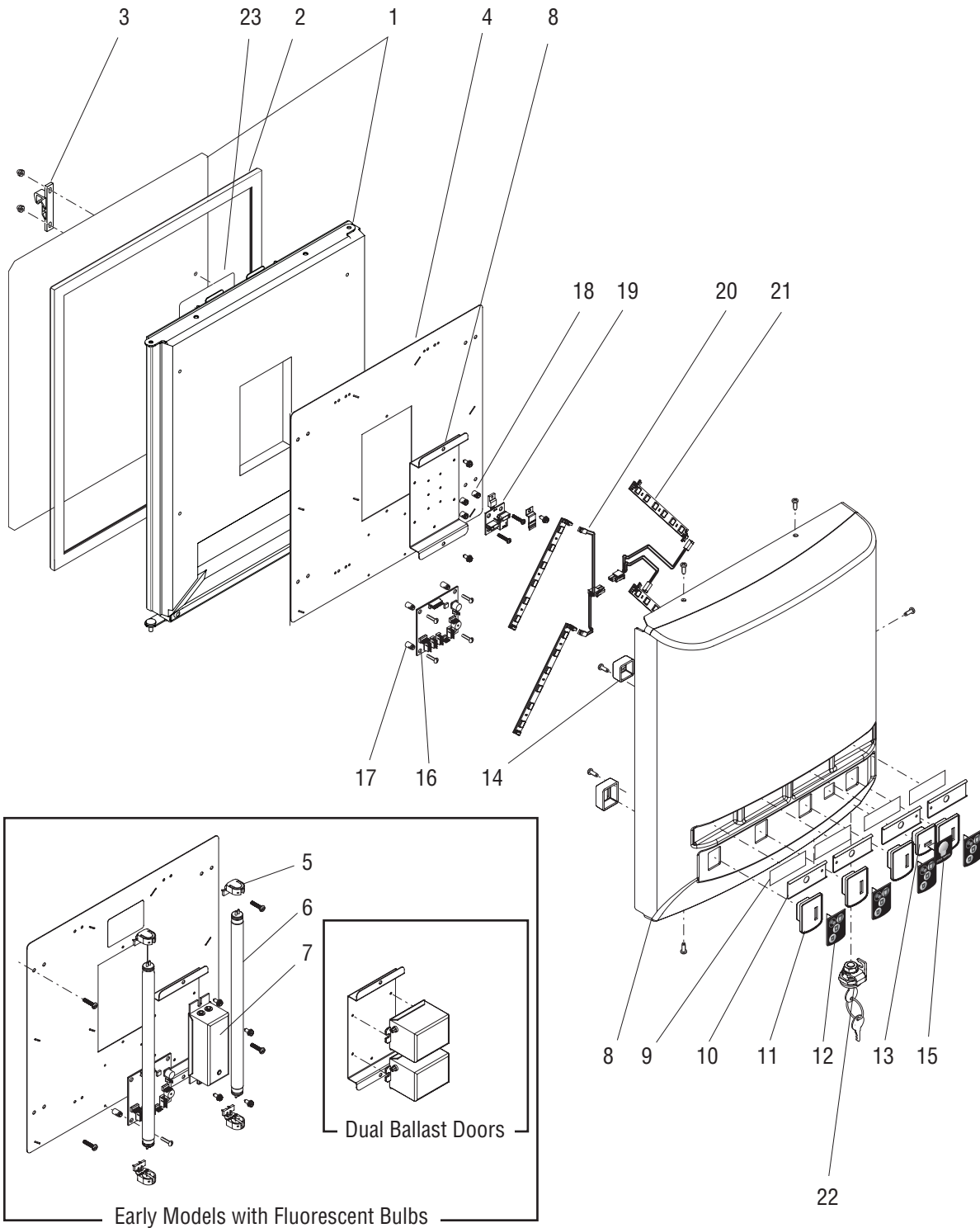
P3934

DOOR ASSEMBLY - LITED w/MECHANICAL SWITCHES

ITEM	PART NO.	QTY.	DESCRIPTION
1	49990.0002	1	Door, Inner (Includes item 2)
2	38568.0003	1	Gasket, Door
3	34667.0001	1	Keeper, Door Latch
	02319.0000	2	Nut, Acorn
	01501.0000	2	Washer
4	39724.0001	1	Panel, Light
	01370.0000	4	Screw, Pan Head #8-32 x .75"
5	27543.0001	4	Lamp Holder (Early Models)
6	26239.0000	2	Lamp, Fluorescent (Early Models)
7	42529.0001	1	Ballast (Single Ballast Doors)
	02335.0001	2	Screw, Hex Crimptite #8 x .38"
8	39706.0027	1	Cover, Door Front (Juice Display)
	39706.0028	1	Cover, Door Front (Iced Coffee Display)
	39706.0029	1	Cover, Door Front (Juice Display)(Models w/ Cold Water Dispense)
	02331.0001	5	Screw, Truss Head, Blk #10-32 x .375"
9	32819.0001	4	Strip, Adhesive
10	37018.0001	4	Flavor Label Holder
11	28296.0002	4	Switch, Dispense
12	39408.0000	1	Switch, Cold Water Dispense
13	29081.0005	3	Spacer
14	41727.1000	1	Circuit Board
15	42609.0001	2	Wiring Harness
16	42593.0000	4	LED
17	34472.1002	1	Key Lock (Includes 2 keys)
	28095.0000	1	Key Set

The following items are not illustrated

18	39739.0000	1	Wiring Harness, Switches
19	32861.0000	-	Decals, Flavor (BUNN Juice)
	32861.0001	-	Decals, Flavor (BUNN Iced Coffee)
20	41202.0000	1	Wiring Harness, Door (Models with Fluorescent Bulbs)
	41202.0001	1	Wiring Harness, Door (Models with LED Lights)
	41202.0007	1	Wiring Harness, Door (Models with LED Lights & Program Switch)

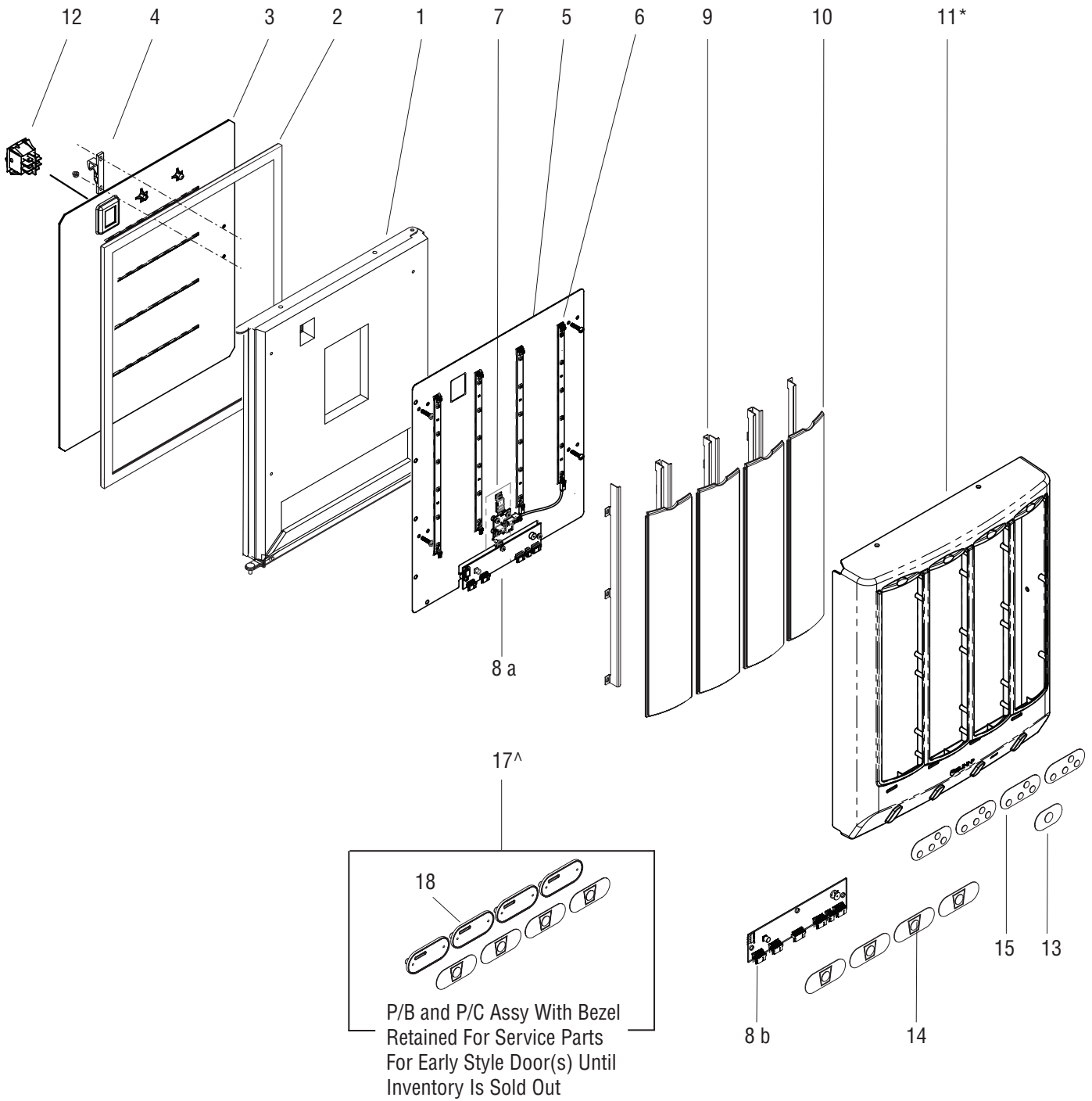


DOOR ASSEMBLY - LITED w/MEMBRANE SWITCHES

ITEM	PART NO.	QTY.	DESCRIPTION
1	49990.0002	1	Door, Inner (Includes item 2)
2	38568.0003	1	Gasket, Door
3	34667.0001	1	Keeper, Door Latch
	02319.0000	2	Nut, Acorn
	01501.0000	2	Washer
4	39724.0001	1	Panel, Light
	01370.0000	4	Screw, Pan Head #8-32 x .75"
5	27543.0001	4	Lamp Holder (Early Models)
6	26239.0000	2	Lamp, Fluorescent (Early Models)
7	52529.0001	1	Ballast (Single Ballast Doors)
	02335.0001	2	Screw, Hex Crimptite #8 x .38"
8	39706.0027	1	Cover, Door Front (Juice Display)
	39706.0028	1	Cover, Door Front (Iced Coffee Display)
	39706.0029	1	Cover, Door Front (Juice Display)(Models w/ Cold Water Dispense)
	02331.0001	5	Screw, Truss Head, Blk #10-32 x .375"
9	32819.0001	4	Strip, Adhesive
10	37018.0001	4	Flavor Label Holder
11	41298.0000	4	Bezel Assy, Switch (Portion Control)
	41299.0000	4	Bezel Assy, Switch (Push Button)
12	40606.0000	4	Membrane Switch (Portion Control Models)
	44971.0000	4	Membrane Switch (Push Button Models)
13	40748.0000	1	Bezel, Cold Water Dispense Switch
14	40747.0000	4	Retainer, Bezel
	01360.0001	8	Screw, Pan Head #6 x .60"
15	40605.0000	1	Membrane Switch, Cold Water Dispense
16	40875.1000	1	Circuit Board, Portion Control
17	29081.0000	4	Spacer, Circuit Board
18	29081.0005	3	Spacer
19	41727.1000	1	Circuit Board
20	42609.0001	2	Wiring Harness
21	42593.0000	4	LED
22	34472.1002	1	Key Lock (Includes 2 keys)
	28095.0000	1	Key Set
23	49633.1000	1	Bracket Kit
	02340.0001	2	Screw

The following items are not illustrated

24	41202.0000	1	Wiring Harness, Door (Models with Fluorescent Bulbs)
	41202.0001	1	Wiring Harness, Door (Models with LED Lights)
	41202.0007	1	Wiring Harness, Door (Models with LED Lights & Program Switch)
25	32861.0000	-	Decals, Flavor (BUNN Juice)
	32861.0001	-	Decals, Flavor (BUNN Iced Coffee)

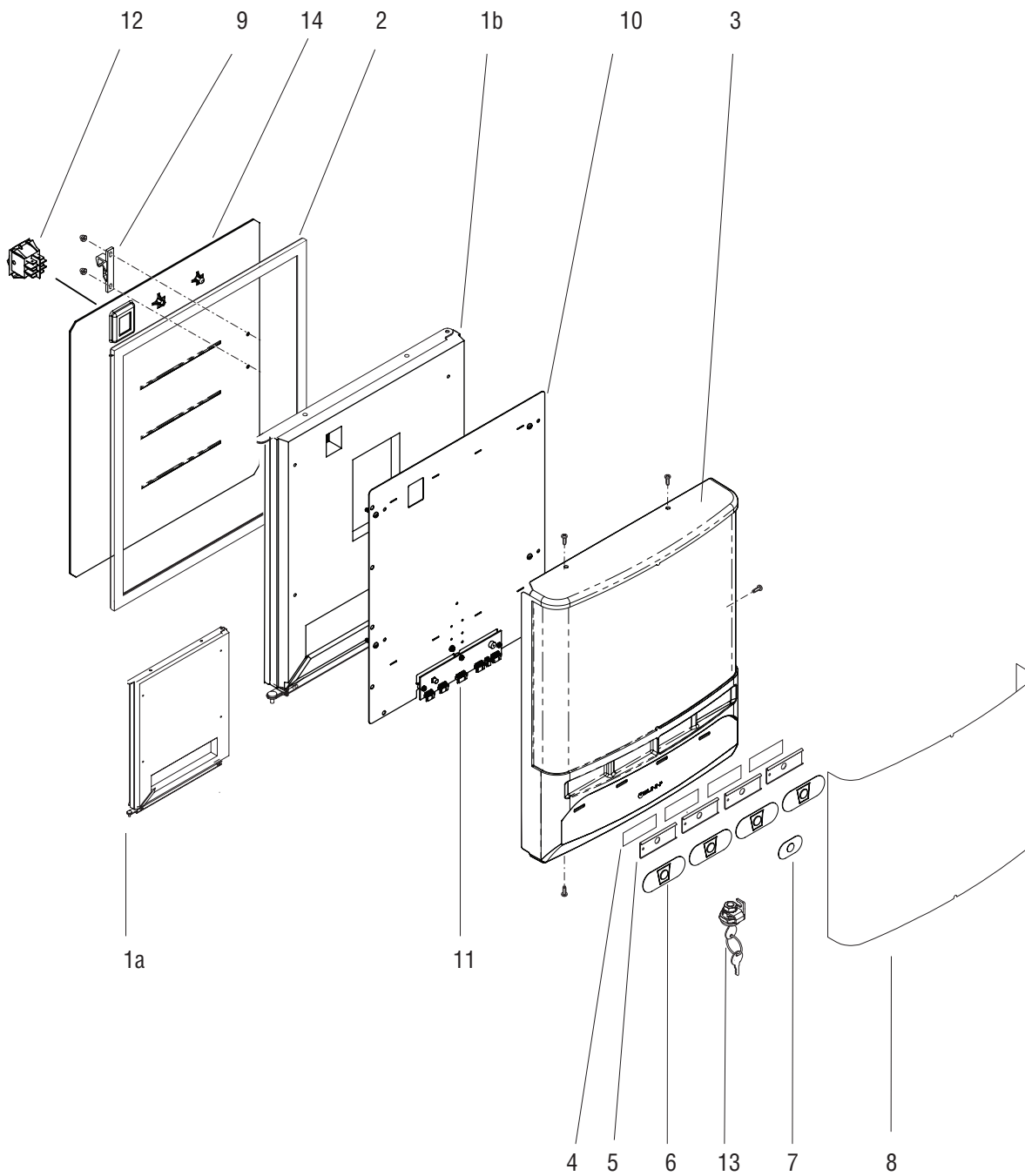


P4449

DOOR ASSEMBLY - LITED 4 LENS DISPLAY

ITEM	PART NO.	QTY.	DESCRIPTION
1	49990.0004	1	Door Assy, Foamed with Dispense Switch Hole (Includes item 2 - Later Style)
2	38568.0003	1	Gasket, Door
3	49983.0001	1	Panel Assy, Door Inner w/Dispense Switch Hole - JDF-4S
4	34667.0001	1	Keeper, Door Latch
	02319.0000	2	Nut, Acorn
	01501.0000	2	Washer
5	50424.1004	1	Panel Assy, LIT-LED PC Four Graphic JDF-4S (Includes item 6, 7, 8a)
	50424.1005	1	Panel Assy, LIT-LED PB Four Graphic JDF-4S (Includes item 6, 7, 8b)
6	50421.0000	4	CBA, 6 LED
7	41727.1000	1	CBA, LED Backlight Regulator
	29081.0005	3	Spacer, PCB Mounting #6 x .250 LG
	14002.6300	3	Screw, PHN Cross Rec 6-20 x .75
8	50477.1000 a	1	CBA, JDF-2S/4S PC 4 Switch
	50477.1001 b	1	CBA, JDF-2S/4S Membrane Switch
	29081.0005	3	Spacer, PCB Mtg #6 x .250 LG
	14002.6300	3	Screw, PHN Cross Rec 6-20 x .75
9	50519.0000	8	Bracket, Lens Retaining
	50530.0000	24	Screw, Hex Washer #6-20 x .50"
10	50081.0000	4	Lens
11	50082.1004*	1	Door, 4 Lens (Models without Cold Water Dispense)
	50082.1005*	1	Door, 4 Lens (Models with Cold Water Dispense)
	02331.0001	5	Screw, TRH SLTD Black OXD 10-32
12	52922.0000	1	Switch, Dispense Lockout
	53913.0000	1	Decal, On Dispense Off (Not Illustrated)
13	50603.0000	1	Switch, Membrane Water Button
14	50489.0000	4	Switch, Membrane One Button
15	50490.0000	2	Four Button Membrane Switch (Portion Control Models)
16	34472.1002	1	Key Lock (Includes 2 keys - Not Illustrated)
17	51965.0000^	4	Switch Assy, Portion Control (Includes Bezel and Screws)
	51965.0001^	4	Switch Assy, Push Button (Includes Bezel and Screws)
18	50080.0000	1	Bezel, Membrane Switch
	50530.0000	2	Screw, Hex WSHR Type 25 6-20 x .50 ZN PL
The following items are not illustrated			
19	42609.0001	1	Wiring Harness, LED/CBA JDF-2S/4S
20	41202.0011	1	Wiring Harness, Door PH-Juice
	41202.0012	1	Wiring Harness, Door PC-Juice
21	54692.0002	1	Wiring Harness, JDF-4S Disp/Disable SW - PH
	54692.0003	1	Wiring Harness, JDF-4S Disp/Disable SW - PC
22	50543.1000	-	Graphics Kit

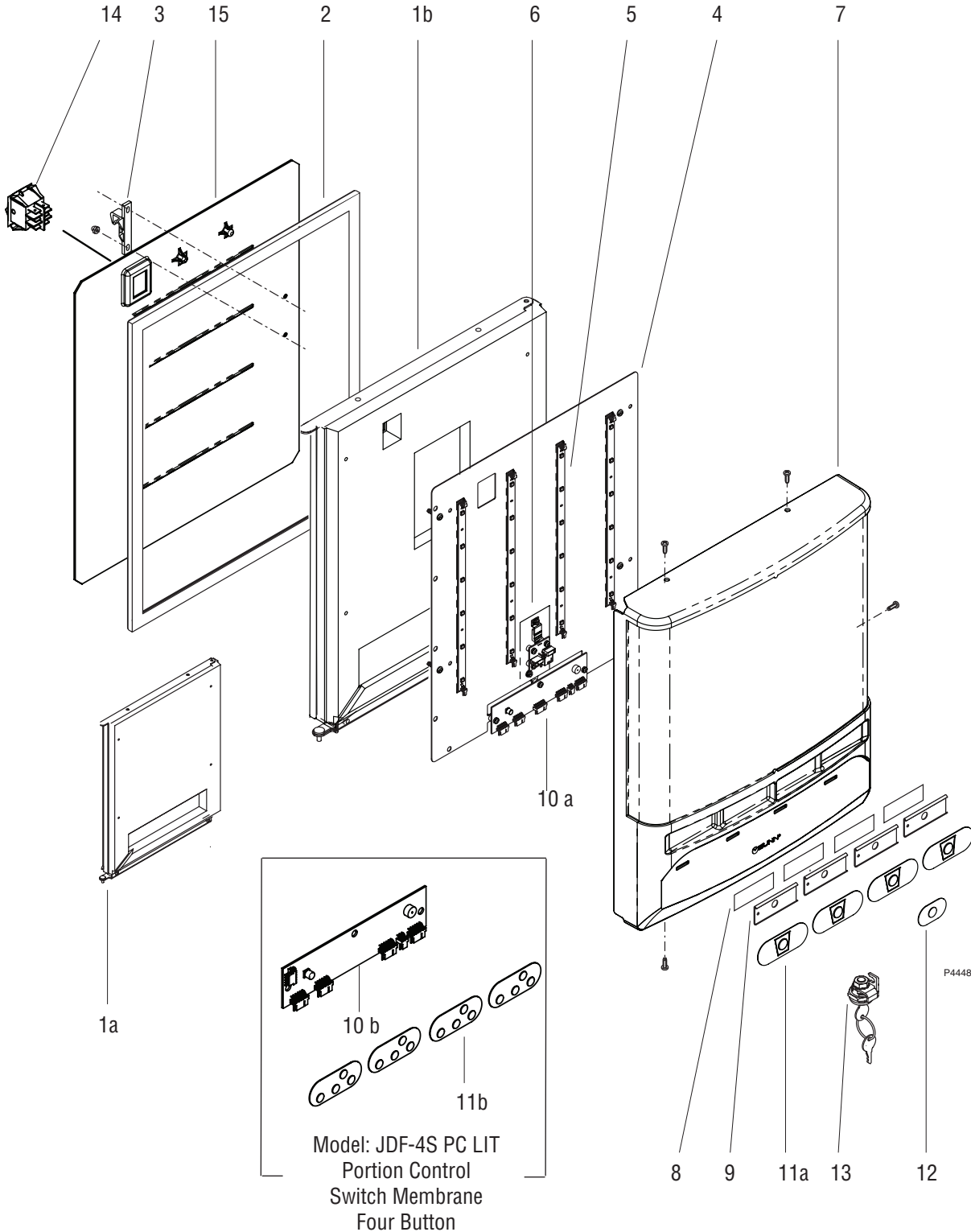
* Door, 4 Lens utilizes 50489.0000, 50490.0000 and 50603.0000 membrane switches only.



DOOR ASSEMBLY - UNLITED PUSH/HOLD MEMBRANE

ITEM	PART NO.	QTY.	DESCRIPTION
1	49990.0002 a	1	Door Assy, Foamed without Dispense Switch Hole (Includes item 2 - Early Style)
	49990.0004 b	1	Door Assy, Foamed with Dispense Switch Hole (Includes item 2 - Later Style)
2	38568.0003	1	Gasket, Door
3	39420.0003*	1	Cover, Door Front
	39420.0004*	1	Cover, Door Front JDF-4S with Water
	02331.0001	5	Screw, Truss Head, Blk #10-32 x .375"
4	32819.0001	4	Strip, Adhesive
5	37018.0001	4	Flavor Label Holder
6	50489.0000	4	Switch, Membrane One Button
7	50603.0000	1	Switch, Membrane Water Button
8	39407.0000	1	Decal, Door Wrap (BUNN Juice)
	39407.0001	1	Decal, Door Wrap (BUNN Iced Coffee)
9	34667.0001	1	Keeper, Door Latch
	02319.0000	2	Nut, Acorn
	01501.0000	2	Washer
10	50424.1006	1	Panel Assy, PB JDF-4S (Includes item 11)
11	50477.1001	1	CBA, JDF-2S/4S Membrane Switch
	29081.0005	3	Spacer, PCB Mtg #6 x .250 LG
	14002.6300	3	Screw, PHN Cross Rec 6-20 x .75
12	52922.0000	1	Switch, Dispense Lockout
13	34472.1002	1	Key Lock (Includes 2 keys)
	28095.0000	1	Key Set
14	49983.0001	1	Panel Assy, Door Inner w/Dispense Switch Hole - JDF-4S
The following items are not illustrated			
15	54692.0002	1	Wiring Harness, JDF-4S Disp/Disable
16	41202.0011	1	Wiring Harness, Door PH-Juice
17	32861.0000	-	Decals, Flavor (BUNN Juice)
	32861.0001	-	Decals, Flavor (BUNN Iced Coffee)
18	53913.0000	1	Decal, On Dispense Off (Reference item 12)
	53913.8500	-	Decal, On Dispense Off (Arabic)

* Door Cover utilizes 50489.0000 and 50603.0000 membrane switches only.



DOOR ASSEMBLY - LITED w/PH or PC MEMBRANE SWITCHES

ITEM	PART NO.	QTY.	DESCRIPTION
1	49990.0002 a	1	Door Assy, Foamed without Dispense Switch Hole(Includes item 2 - Early Style)
	49990.0004 b	1	Door Assy, Foamed with Dispense Switch Hole(Includes item 2 -Later style)
2	38568.0003	1	Gasket, Door
3	34667.0001	1	Keeper, Door Latch
	02319.0000	2	Nut, Acorn
	01501.0000	2	Washer
4	50424.1005	1	Panel Assy, Light-LED PB JDF-4S (Includes items 5, 6, 10a, 16)
	01370.0000	4	Screw, Pan Head #8-32 x .75"
5	50421.0000	4	CBA, 6 LED
6	41727.1000	1	CBA, LED Backlight Regulator
	29081.0005	3	Spacer, PCB Mounting #6 x .250 LG
	14002.6300	3	Screw, PHN Cross Rec 6-20 x .75
7	53745.0000*	1	Graphic Form, Lit Door w/Lock JDF-4S Membrane (Juice)
	53745.0001*	1	Graphic Form, Door w/water JDF-4S Membrane (Juice)
	02331.0001	5	Screw, Truss Head, Blk #10-32 x .375"
8	32819.0001	4	Adhesive, Flavor Label holder
9	37018.0001	4	Flavor Label Holder
10	50477.1001 a	1	CBA, JDF-2S/4S Membrane Switch
	50477.1000 b	1	CBA, JDF-2S/4S PC 4 Switch
	29081.0005	3	Spacer, PCB Mtg #6 x .250 LG
	14002.6300	3	Screw, PHN Cross Rec 6-20 x .75
11	50489.0000 a	4	Membrane Switch (Push Button Models)
	50490.0000 b	4	Four Button Membrane Switch (Portion Control Models)
12	50603.0000	1	Switch, Membrane Water Button
13	34472.1002	1	Key Lock (Includes 2 keys)
	28095.0000	1	Key Set
14	52922.0000	1	Switch, Dispense Lockout
15	49983.0001	1	Panel Assy, Door Inner w/Dispense Switch Hole - JDF-4S

The following items are not illustrated

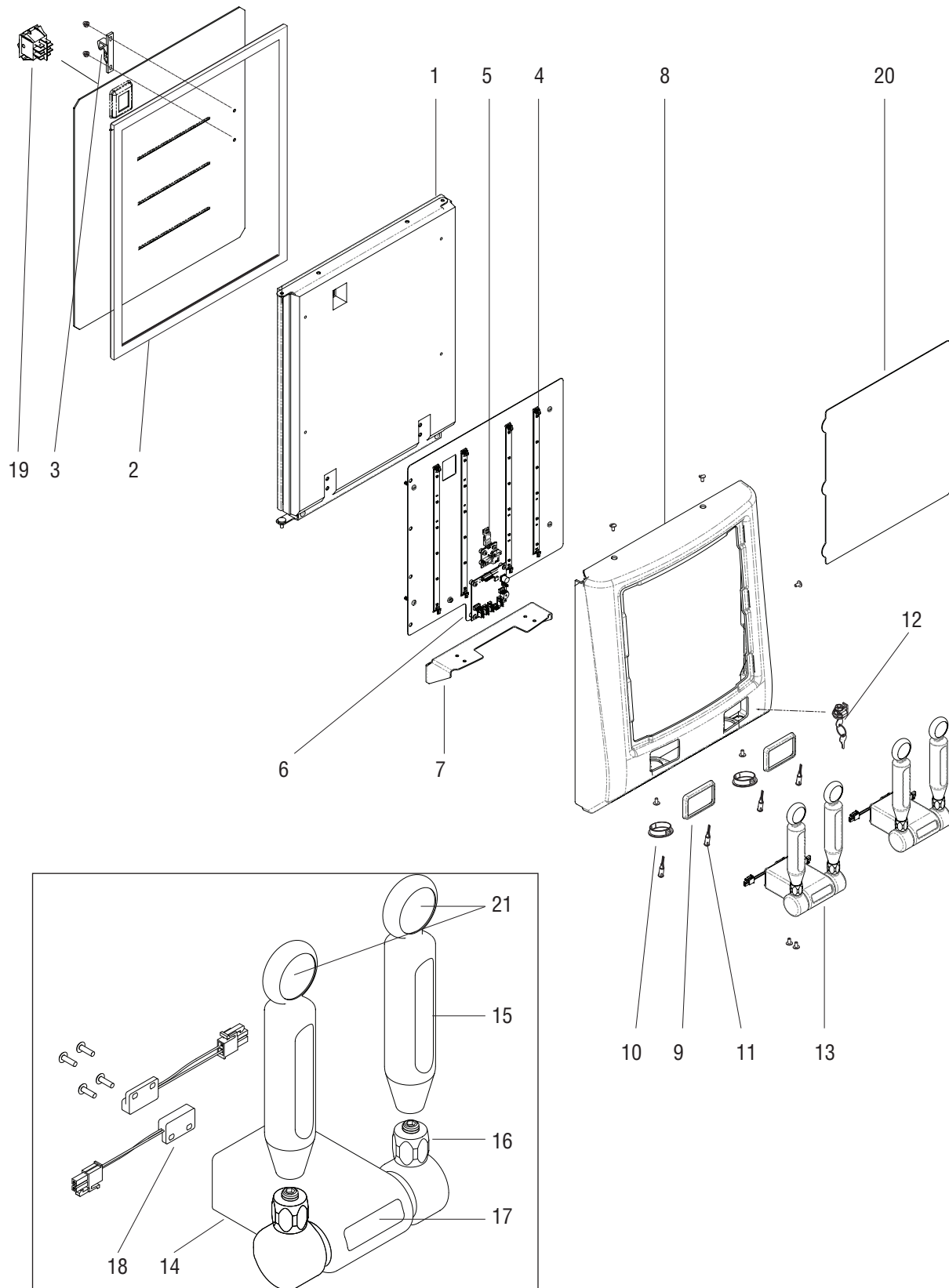
16	42609.0001	1	Wiring Harness, LED/CBA JDF-2S/4S
17	54692.0002	1	Wiring Harness, JDF-4S Disp/Disable SW - PH
	54692.0003	1	Wiring Harness, JDF-4S Disp/Disable SW - PC
18	41202.0011	1	Wiring Harness, Door PH-Juice
	41202.0012	1	Wiring Harness, Door PC-Juice
19	32861.0000	-	Decals, Flavor (BUNN Juice)
	32861.0001	-	Decals, Flavor (BUNN Iced Coffee)
20	53913.0000	1	Decal, On Dispense Off (Reference item 14)
	53913.8500	-	Decal, On Dispense Off (Arabic)

* Graphic Form Door utilizes 50489.0000, 50490.0000 and 50603.0000 membrane switches only.



DOOR ASSEMBLY - TAP HANDLES

JDF-4S

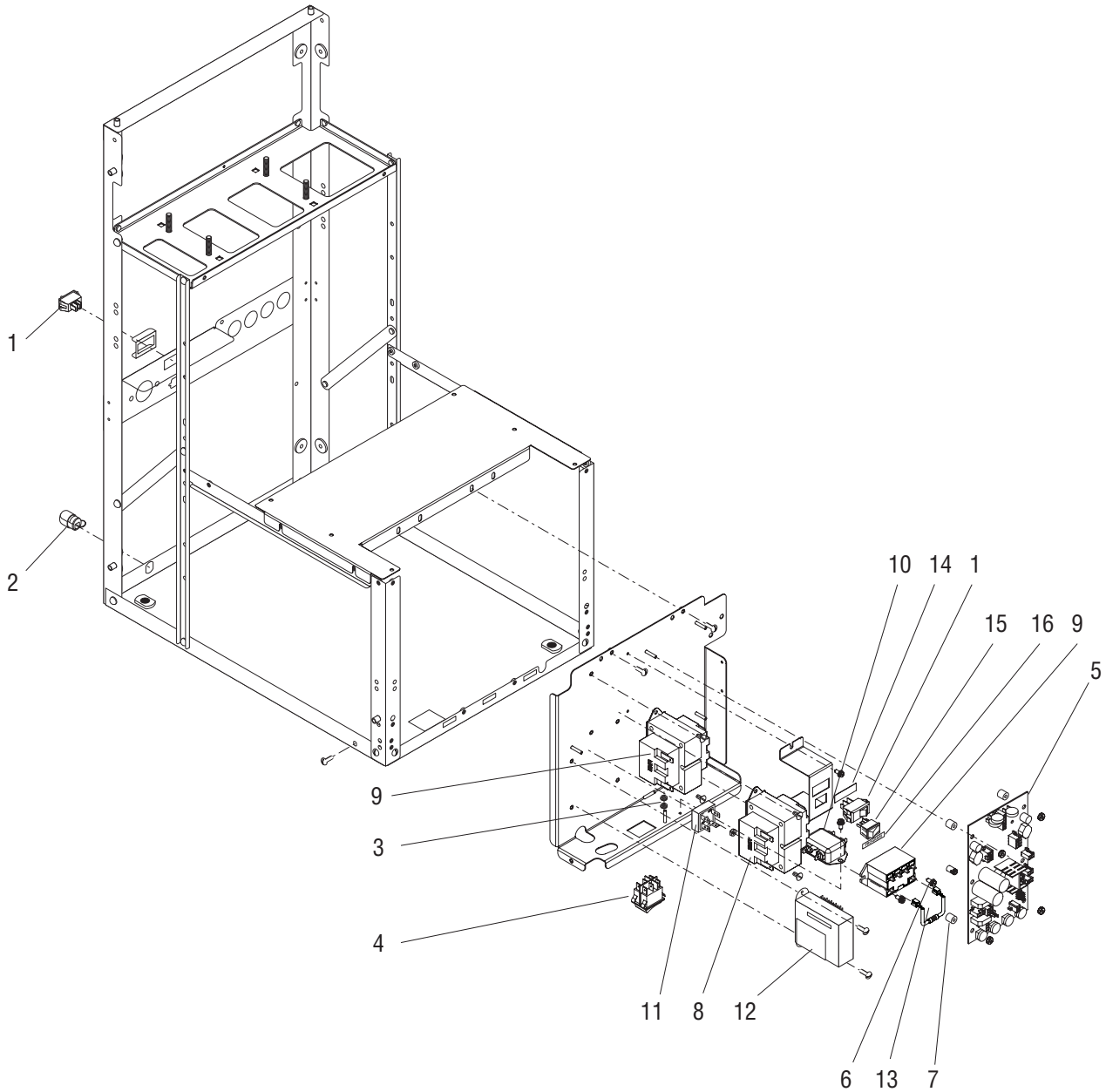


DOOR ASSEMBLY - TAP HANDLES

ITEM	PART NO.	QTY.	DESCRIPTION
1	49990.0006	1	Door Assy, Inner-Foamed JDF-4S Tap Handle
2	38568.0003	1	Gasket, Door
3	34667.0001	1	Keeper, Door Latch
	02319.0000	2	Nut, Acorn
	01501.0000	2	Washer
4	50421.0001	4	CBA, 6 LED 11.000 x .472
5	41727.1000	1	CBA, LED Backlight Regulator
6	40875.1000	1	CBA, JDFS PC SW ROHS
7	53212.0001	1	Bracket, Handle Body Mtg 4S
	01330.0000	4	Screw, Hex Wshr Serr 10 - 32 x .38
8	54796.0000	1	Graphic Form, Door 4S Tap Handles
	02331.0001	5	Screw, Trh Sltd Blk Oxd 10-32
9	53207.0002	2	Gasket, Door Handle Flat
10	53240.0000	2	Plug, Pry Out 1.5 Dia Black
11	36903.0000	4	LED Assembly, Blue with Terminals
12	34472.1002	1	Kit, Door Lock Assy JDF-4S
13	53210.1000	2	Kit, Body Assembly (with Pull and Hold Handles)
	01330.0000	4	Screw, Hex Wshr Serr 10 - 32 x .38
14	53211.1000	-	Kit, Body Assembly (Qty-1, No Handle and Nut)
15	53213.1000	2	Kit, Handle Pull - No Flavor Labels (Qty-1)
16	53215.0000	2	Nut, Handle 3/8-16 UNC
17	54187.0000	2	Decal, BUNN Logo Domed 1.8x.5
18	51855.0001	4	Switch Assy, Reed 2 Pin Conn
	02336.0000	8	Screw, Trh Slotted SST 4-40 x .38
19	52922.0000	1	Switch, Rocker DPST On/On
20	54903.1000	1	Kit, Graphic Insert Juice
	54903.1001	-	Kit, Graphic Insert Coffee
21	53216.0018	-	Decal, Handle Juice Flavors
	53216.0019	-	Decal, Handle Coffee Flavors

The following items are not illustrated

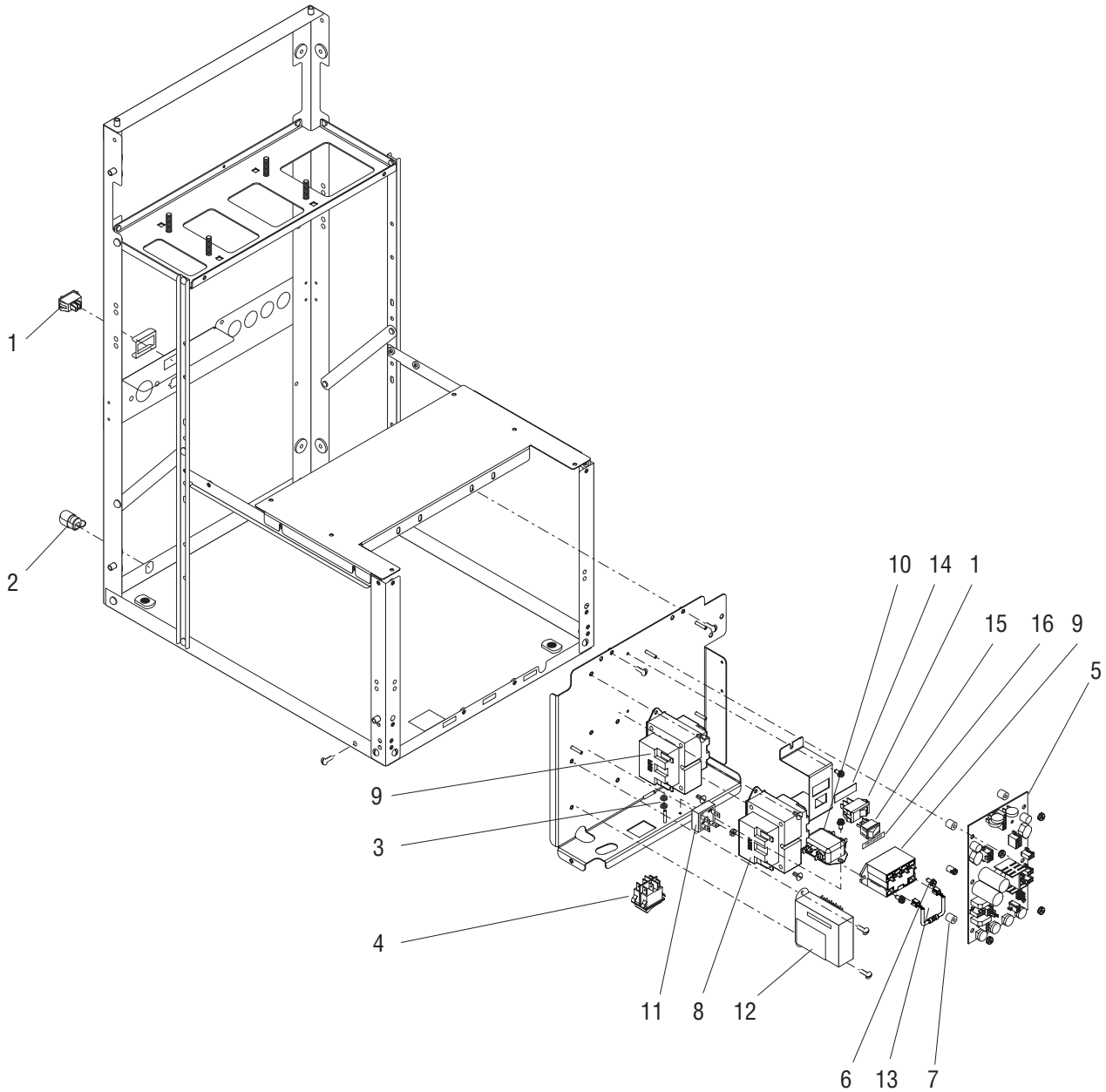
22	M2548.1001	-	Kit, Krytox Grease - 0.5 Oz.
----	------------	---	------------------------------



ELECTRICAL COMPONENTS

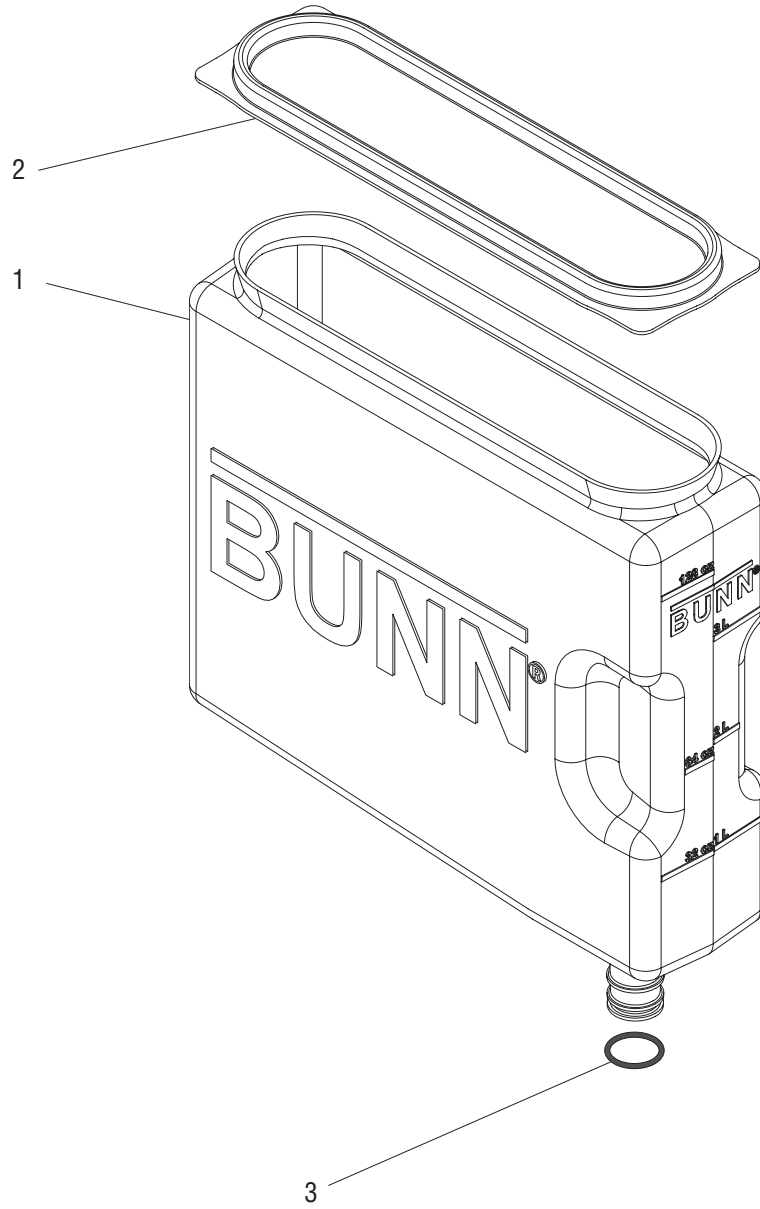
ITEM	PART NO.	QTY.	DESCRIPTION
1	04786.0005	1	Switch, Compressor ON/OFF
2	00707.0000	1	Bushing, Strain Relief
3	00973.0001	2	Nut, Harness Grounding
4	52922.0000	1	Switch, Dispense Deck ON/OFF
5	40177.1000	1	Circuit Board
	40177.1008	1	CBA, JDF-2S/4S ROHS Tap Handle (Dispenser - Tap Handle)
	00973.0001	4	Nut, Keps #6-32
6	29081.0000	2	Spacer
7	01533.0000	4	Spacer
8	39305.0000	2	Transformer 120V
	39417.0001	2	Transformer 230V
	02308.0000	4	Screw, Pan Head #8-32 x .38"
9	37711.0000	1	Relay 120V
	37711.0001	1	Relay 230V
	02335.0001	2	Screw, Crimptite #8 x .38"
10	29446.0000	1	EMI Filter 230V
	02335.0001	1	Screw, Crimptite #8 x .38"
11	22126.0000	1	Rectifier (Models w/ Lited Door)
	00973.0001	1	Nut, Keps #6-32
12	28860.0000	1	Transformer 120V (Models w/ Lited Door)
	28860.0001	1	Transformer 230V (Models w/ Lited Door)
	02308.0000	2	Screw, Pan Head #8-32 x .38"
13	40770.1000	1	Resistor 230V
14	41509.0000	1	Decal, Compressor Switch
15	20317.0004	1	Switch, Program
16	44240.0000	1	Decal, Program

T



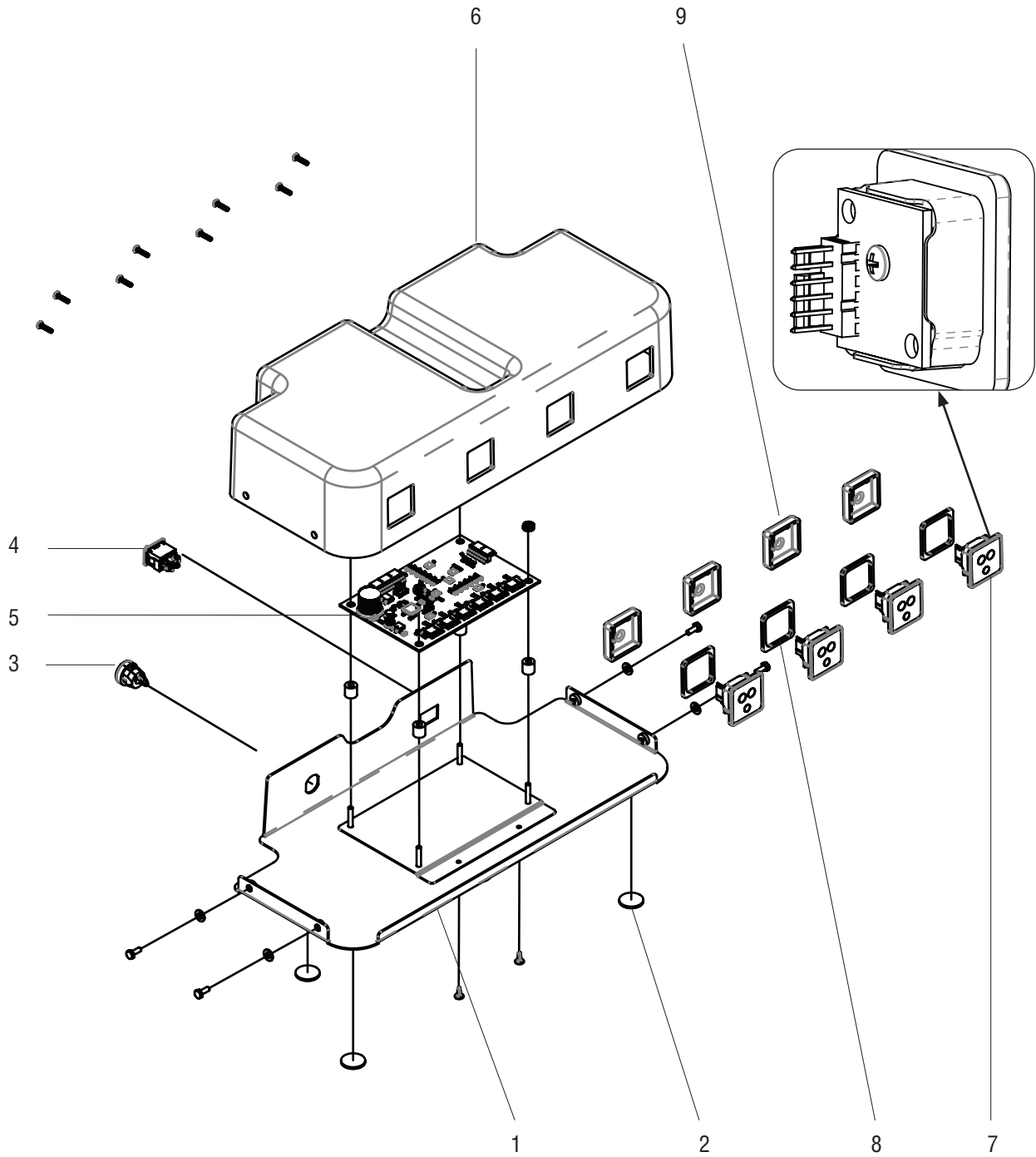
ELECTRICAL COMPONENTS

ITEM	PART NO.	QTY.	DESCRIPTION
The following items are not illustrated			
17	20630.0015	1	Power Cord 120V
	41091.0000	1	Power Cord 230V
18	38870.0000	2	Wiring Harness, Transformer to Circuit Board
19	39737.0000	1	Wiring Harness, Main
	39737.0002	1	Wiring Harness, Main (Models with Front Mounted Refrig. Sw.)
20	38873.0001	2	Wiring Harness, Platform
21	39738.0000	1	Wiring Harness, Unlited Door
	39738.0002	1	Wiring Harness, Unlited Door (Models with Program Sw.)
	40321.0000	1	Wiring Harness, Lited Door (Models with Fluorescent Bulbs)
	41202.0001	1	Wiring Harness, Lited Door (Models with LED Lighting & Portion Control)
	41202.0007	1	Wiring Harness, Lited Door (Models with Program Sw.)
	58878.0000	1	Wiring Harness, Door-PC (Model with LED Lighting & Tap Handles)
22	39736.0000	1	Wiring Harness, Transformer to Circuit Board (Lited Doors)
23	41203.0000	1	Wiring Harness, Dispense Disable
	41203.0001	1	Wiring Harness, Dispense Disable (Models with Portion Control)



REFILLABLE CONTAINER ASSEMBLY

ITEM	PART NO.	QTY.	DESCRIPTION
1	39302.0000	1	Container Assy (Includes items 2 & 3)
2	39299.0000	1	Lid
3	34261.0000	1	O-ring



TOUCHLESS SENSOR TECHNOLOGY KIT

ITEM	PART NO.	QTY.	DESCRIPTION
	45541.1004	1	KIT, TST 4 VALVE MECH SWITCH
	45541.1006	1	KIT, TST 4 VALVE OVAL OVERLAY
1	45540.0004	1	PANEL WLDMT, TST/CBA MTG 4 VALVE
2	39443.1003	1	KIT, PAD ADHESIVE BACK .750 X .062
3	00707.0001	1	BUSHING, STRAIN RLF-STR 6L-1
4	04786.0002	1	SWITCH, ON/OFF 125/250V VISI-RED ROCKER
5	57669.1000	1	KIT, JDF/NITRON TOUCHLESS INTERFACE CBA
	00973.0000	4	NUT, KEPS 6-32 ZINC PLATE
	01533.0000	4	SPACER,NYL-.171IDx.375ODx.375
6	45538.0002	1	COVER, TST MTG 4 VALVE
	02340.0001	4	SCREW,HEX HD-SST- 8-32x.38
	01522.0001	4	WASHER, FLAT-.187IDx.375OD SST
7	57699.1000	4	KIT, BEZEL ASSY W/OVERLAY/SEAL TST (INCLUDES ITEM 8, 9 & 15)
	38837.0000	8	SCREW, PNH #4 TYPE 25 X .50 (2 SCREWS PER BEZEL ASSY)
8	57666.0000	4	SEAL, TST BEZEL
9	57559.0000	4	RETAINER, TOUCHLESS SENSOR TECH

The following items are not illustrated

10	57673.0000	1	WIRING HARNESS, INTERFACE TO MAIN CBA
11	57672.0000	1	WIRING HARNESS, SENSOR TO INTERFACE
12	57671.0000	1	WIRING HARNESS, SWITCH TO INTERFACE
13	57674.0000	1	WIRING HARNESS, Y-ADAPTER AC POWER
14	57757.0000	1	DECAL, JDF SPLASH GUARD
15	57676.0000	4	OVERLAY, TST BEZEL
16	57758.0000	4	OVERLAY, JDF OVAL MEMB SWITCH
	57756.0000	4	OVERLAY, JDF-4S COVER SWITCH MTG HOLE