

JDF®-4S, 120V LIT 4 SEG PH W/WATER

Height: 33.4" Width: 15.7" Depth: 27.5"
(84.8cm) (39.9cm) (69.9cm)



- Patented High Intensity Mixing System delivers consistent quality beverages in the cup --- cup after cup, from the top of the cup to the bottom of the cup
- Four Segment Graphic Door makes graphics changes easy. Includes variety- pack of eight displays: Apple Juice; Cranberry Juice; Grape Juice; Lemonade; Orange Juice; Pineapple Juice; Prune Juice; Iced Tea
- LED lighted door graphics bring high visibility to front-of-house applications
- One dispenser delivers both frozen and ambient concentrate products, to maximize profitability by providing greater flexibility in product offerings
- Both push and hold dispense and optional single size portion control dispense available in the same dispenser
- 7" (17.8cm) cup clearance accommodates most juice containers
- Quick dispense with 1.0 to 1.5oz (29.6 to 44.4ml) per second flow rate
- With Cold Water dispense feature
- Door lock standard
- ADA compatible dispense switch kit model available for self-serve locations
- Service friendly design makes set up and maintenance simple
- Burst Capacity: At rate of three 12 oz drink/min, 145 drinks before exceeding 41°F (75°F ambient and 75°F incoming water temp)

Agency:



Specifications

Product #: 37300.0094

Flavors: 4 Flavors

Water Access: Plumbed

Door: Lit

Refrigerant: R134A

Ice Bank: 18.00 lbs (8.165 kgs)

Dispense: Push Button

Legs: 4" Black Legs

Additional Features

Air Filter Included

See Spec Sheet for Capacities

Cold Water Button

Electrical & Capacity

Volts*	Amps	Watts	Cord Attached	Plug Type	8oz cups/hr 236ml cups/hr	Input H ₂ O Temp.	Phase	# Wires plus Ground	Hertz
120	6	720	Yes	NEMA 5-15P	-	60°F (15.5°C)	1	2	60

*When a BUNN is machine rated 120/208-240V, 120/208V or 120/240V, the higher voltage is the supply voltage needed to power the machine. The 120V is there to supply power to some components rated 120V in the machine, but it is not the supply voltage and would not power the machine if the machine is marked with the before mentioned ratings.

Plumbing Requirements

PSI	kPa	Fitting Supplied	Water Flow Required (GPM)
20-100	138-689	3/8" Male Flare Fitting	-

CAD Drawings

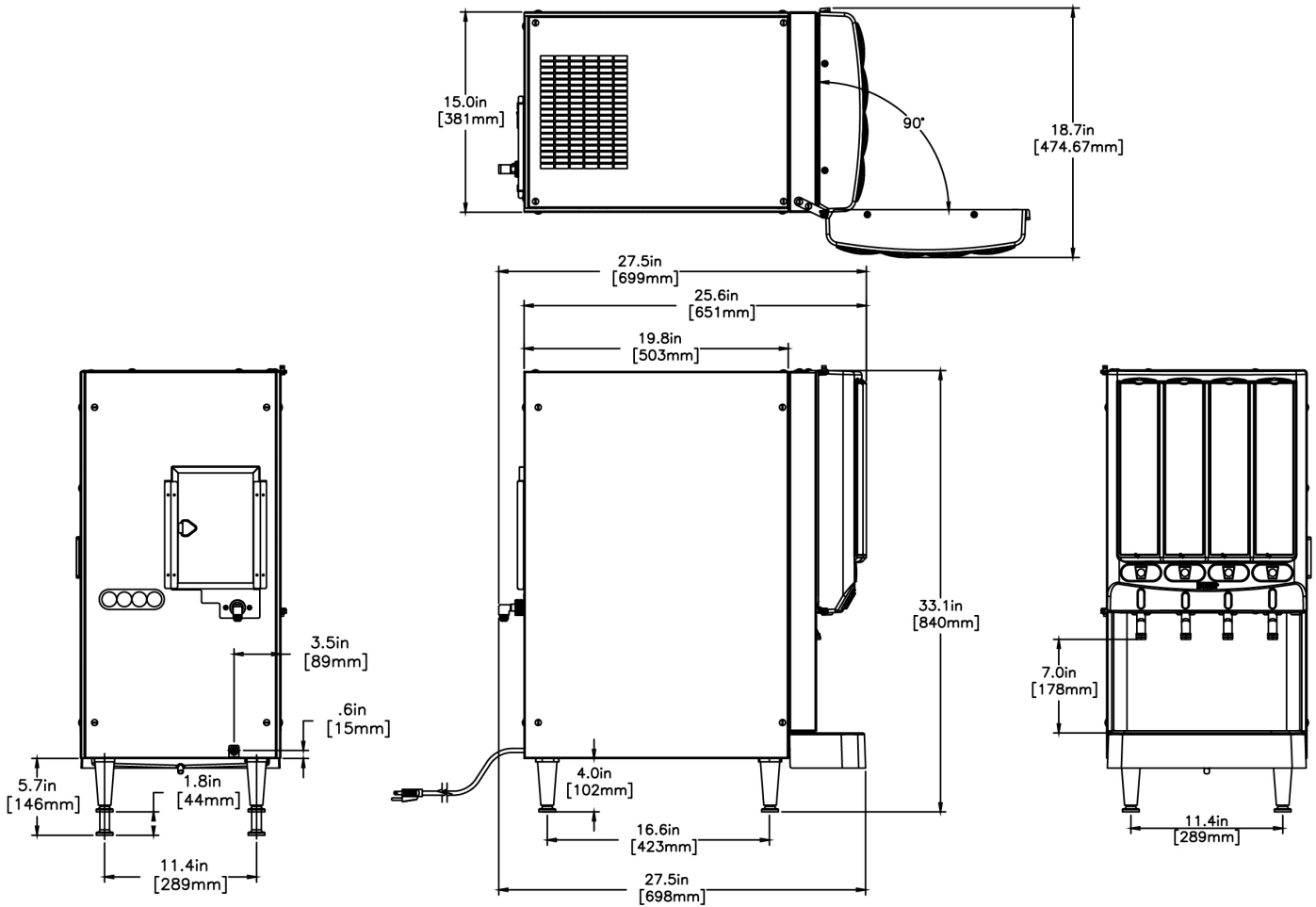
2D	Revit	KLC
●	●	●

WARNING: This product can expose you to chemicals including Bisphenol A (BPA), which is known to the State of California to cause birth defects or other reproductive harm. For more information go to www.P65Warnings.ca.gov



BUNN® reserves the right to change specifications and product design without notice. Such revisions do not entitle the buyer to corresponding changes, improvements, additions or replacements for previously purchased equipment. For most current specifications and other info visit bunn.com.

Last Updated:
01/26/2022



Unit			Shipping					
	Height	Width	Depth	Height	Width	Depth	Weight	Volume
English	33.4 in.	15.7 in.	27.5 in.	43.7 in.	22.8 in.	30.5 in.	143.000 lbs	17.586 ft³
Metric	84.8 cm	39.9 cm	69.9 cm	111.0 cm	57.9 cm	77.5 cm	64.865 kgs	0.498 m³



BUNN® reserves the right to change specifications and product design without notice. Such revisions do not entitle the buyer to corresponding changes, improvements, additions or replacements for previously purchased equipment. For most current specifications and other info visit bunn.com.

Last Updated:
01/26/2022

Related Products & Accessories: JDF®-4S, 120V LIT 4 SEG PH W/WATER(37300.0094)

KIT, AMBIENT CONC
CVRSN JDF-4

Product #: 33699.0001



CONTAINER ASSY,
REFILLABLE

Product #: 39302.0000



WIRE GRILL, DRIP TRAY
(JDF-4S)

Product #: 39613.0000

KIT, HOSE ASSY-PUMP
JDF-2S/4S

Product #: 39690.0000



TRAY, EXTENDED DRIP
JDF-4S

Product #: 40789.1000



BUNN® reserves the right to change specifications and product design without notice. Such revisions do not entitle the buyer to corresponding changes, improvements, additions or replacements for previously purchased equipment. For most current specifications and other info visit bunn.com.

Last Updated:
01/26/2022

Serving & Holding Options: JDF®-4S, 120V LIT 4 SEG PH W/WATER(37300.0094)

Serving and Holding selections are currently unavailable. Please contact your sales representative to find out more information.



BUNN® reserves the right to change specifications and product design without notice. Such revisions do not entitle the buyer to corresponding changes, improvements, additions or replacements for previously purchased equipment. For most current specifications and other info visit bunn.com.

Last Updated:
01/26/2022