



Gulf Ice Systems

McCann's Multiplex[®]

Big Mac Carbonator

with ASSE 1022 Device, Potted-Probe

E400397-PP

Material # 150000263

TWO-PIECE POTTED PROBE DESIGN (5 YEAR WARRANTY)

- Easy to service carbonator
- Potted Probe with Check Valve
- Improves diagnostic
- Reduce service time and cost
- No need to shut CO2 or water off during service

RIGHT ANGLE PROBE SERVICE CORD

- Lowers carbonators profile
- Reduces strain on probe
- Prevents damage to electronics from moisture

ENCAPSULATED ELECTRONICS PACKAGE

- Trouble free electronics
- Prevents damage to electronics from moisture
- No external relays or electrical components

HEAT SINK PROBE CAP

- Probe life increased dramatically

IMPROVED PROBE ELECTRONICS

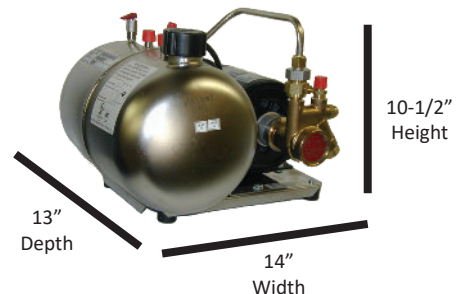
- Resists high amperage from spikes, 'brown-outs' locked motors and pump failures
- Greater reliability
- Factory repairable

DIAMOND BRITE TANK (5 YEAR WARRANTY)

- Reduces corrosion
- Easily cleaned



Model: E400397-PP (Potted Probe)



14" Width x 13" Depth x 10.5" Height



McCann's
Multiplex[®]

Page 1 of 2



E400397-PP Big Mac Carbonator

with ASSE 1022 Device, Potted-Probe



Model: E400397-PP

Material # 150000263

14" Width x 13" Depth x 10.5" Height

SPECIFICATIONS

- Brass water pump with integral strainer, 100 GPH, 250 psi by-pass
- 1/4 MF CO2 Inlet, (2) 3/8 MF soda water outlets
- Injection molded base, rubber feet (for sound insulation)
- ASSE 1022 specified backflow prevention device

ELECTRICAL

- 115 VAC 60 Hz single phase, 7 Amps, 1/3 HP

FEATURES

- Two-piece probe design (reduces service time)
- Potted Probe with Check Valve
- Right angle probe service cord
- Heat sink probe cap
- No external Electronic components

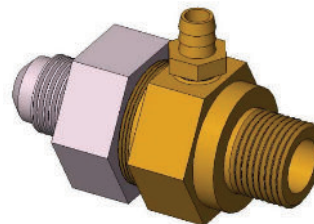
AVAILABLE ACCESSORIES

- 16-1480 Wall Mounted Shelf.
- 16-0856 Pump Saver - Automatically shuts carbonator motor off if water pressure drops below 15 psi.



Item #: 16-1480

- Sturdy Stainless Steel Construction.
- Easy to assemble.
- 14.625 Width x 13.125" Depth x 10.25" Height



ASSE 1022 BACKFLOW PREVENTOR

- Working pressures from 10-200 psig.
- Working Temperature up to 130 F.
- 3/8" Flared x 3/8" NPT connections.
- Designed to prevent backflow.
- This device meets or exceeds National certification.



Item #: 16-0856

Material # 150033228

- Automatically shuts carbonator motor OFF if incoming water pressure drops below 15 psi.
- Automatically re-starts carbonator motor when incoming water pressure returns to 20 psi or more.

Multiplex®

Page 2 of 2

