



**SERVICE PARTS MANUAL  
30" MODULAR CUBERS**

**Air, Remote, Water Cooled with R449 Refrigerant**  
**CIM0836XX49 / CIM0836GA49 (Grande)**  
**CIM1136XX49 / CIM1137XX49**

**60hz MODELS**

CIM0836FA49  
CIM0836HA49  
CIM0836GA49  
CIM0836FR49  
CIM0836HR49  
CIM0836FW49  
CIM0836HW49

CIM1136FA49  
CIM1136HA49  
CIM1136FR49  
CIM1136HR49  
CIM1136FW49  
CIM1136HW49

CIM1137FA49  
CIM1137HA49  
CIM1137FR49  
CIM1137HR49  
CIM1137FW49  
CIM1137HW49



Parts Manual for  
800-1100 lb  
CIM 30" Cuber  
50-60hz Models

IMPORTANT NOTE: At the time this document was modified, the newer refrigerant models were in a state of transition (new design and refrigerant type). As such, there are indications that earlier models of the CIM0826A-W, CIM0836A-W, CIM1126A-W, CIM1136A-W used R290 refrigerant (reference related R290 parts manual).

Based on this specific parts manual (the one your presently reading), it appears that these models may have been re-engineered or revised to use R449 refrigerant (reference related R449 parts manuals). It's also likely that the manufacturer re-used an older template and didn't properly update the model references thus causing confusion. Once verified, these statements will be updated or removed.

As this is a transition period, the specifics of this issue is difficult to confirm. To verify the refrigerant type, simply identify the model of the unit in question. If it ends in 49, the unit uses R449 refrigerant. If it ends in 90, the unit uses R290 refrigerant.

If neither is the case, it may be an earlier model that uses R404 refrigerant. If so, you'll need to reference an earlier published parts manual specific to that model. For proper parts identification, always use the appropriate parts manual related to the model and refrigerant type.

This manual was modified and updated by Gulf Ice Systems, Inc. (04/29/2026).

This parts list contains the service parts available for the following CIM Series.

<b>CIM0836XX49</b>	<b>208-230/60/1</b>	<b>CIM0835XX49</b>	<b>220-240/50/1</b>
<b>CIM0836GA49</b>	<b>208-230/60/1</b>		
<b>CIM1136XX49</b>	<b>208-230/60/1</b>	<b>CIM1135XX49</b>	<b>220-240/50/1</b>
<b>CIM1137XX49</b>	<b>208-230/60/3</b>		

**Model Number Example**

**CIM0836HA49**

**CIM** = **C**uber **I**ce **M**achine

**08** = 800 lb, in 24 hours capacity

**3** = 30 inch wide cabinet

**0** = 115 Volt, **5** = 220-240/50/1 **6** = 208-230/60/1 Volt

**H** = Half Cube Size, **F** = Full Cube Size **G**=Grande Cube Size

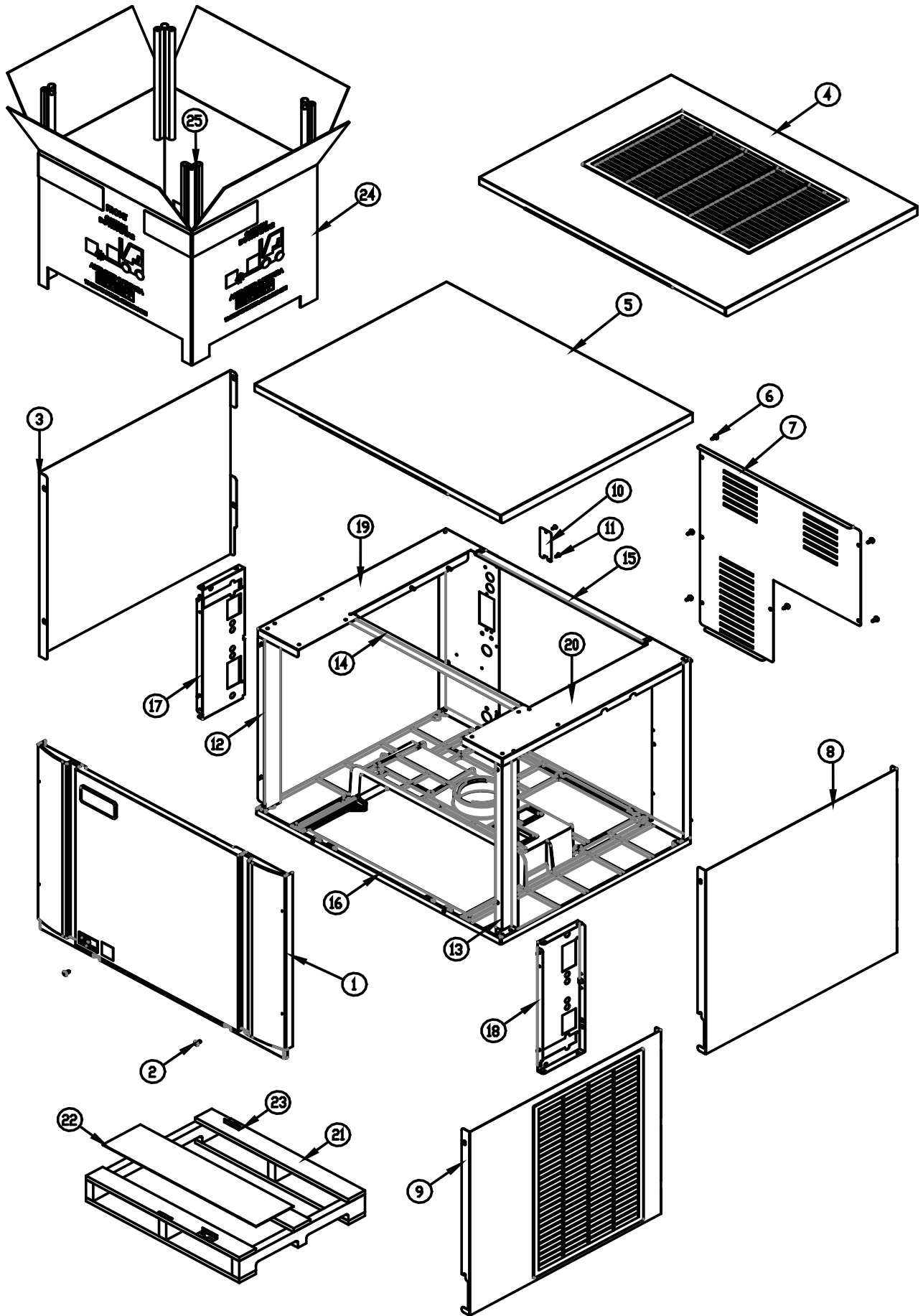
**A** = Air Cooled Condenser, **W** = Water Cooled Condenser **R**=Remote Condenser

**49**=Refrigerant R449

**Check the model number on the data plate and refer to the correct listing for the specific component.**

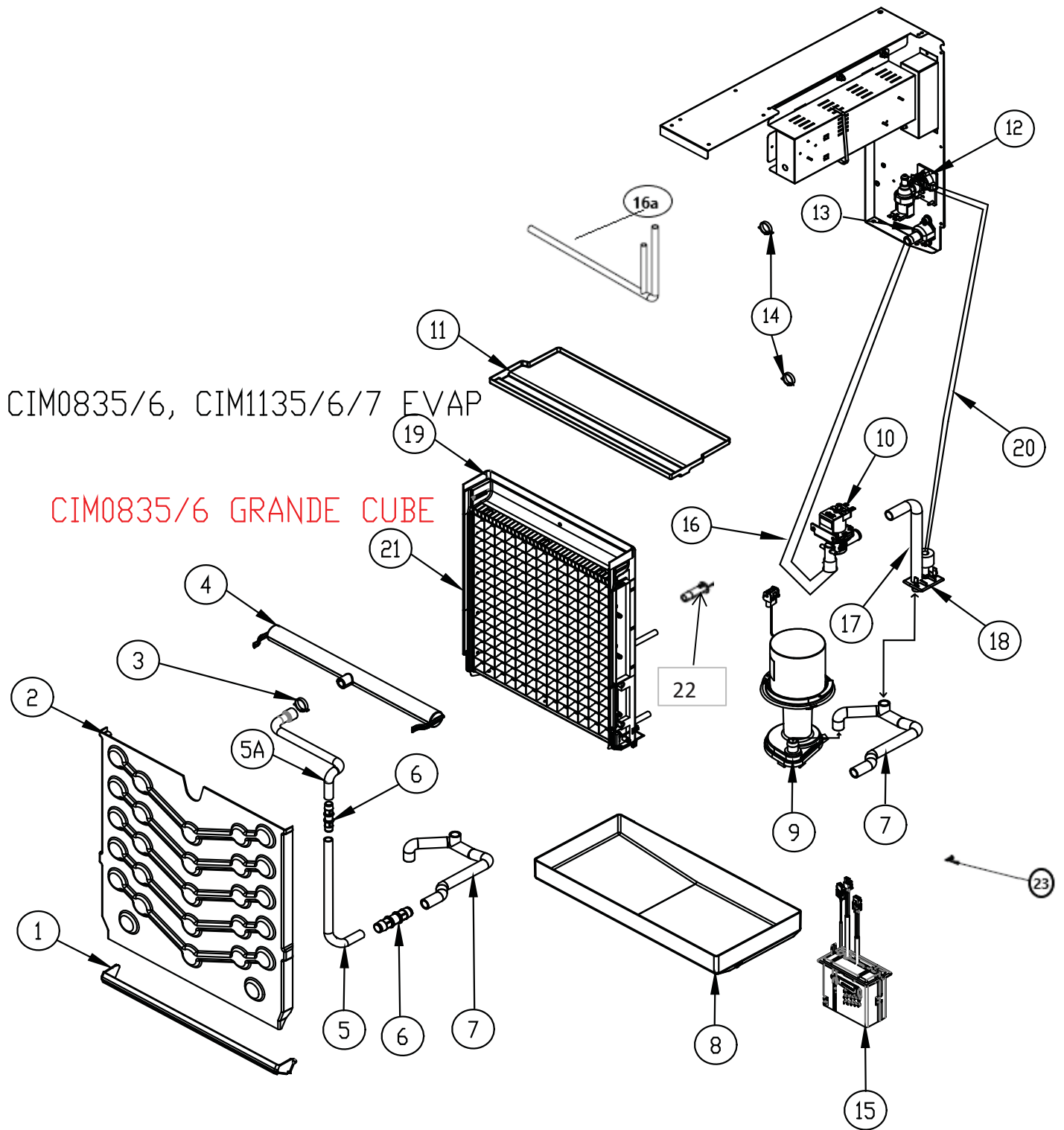
Check carefully that the correct part is identified and ordered.

<b>Table of Contents</b>	<b>Page 1</b>
<b>Cabinet</b>	<b>Page 2-3</b>
<b>Water System</b>	<b>Page 4-5</b>
<b>Air Cooled Condenser</b>	<b>Page 6-7</b>
<b>Remote Condenser</b>	<b>Page 8-9</b>
<b>Electrical</b>	<b>Page 10-11</b>
<b>Compressor</b>	<b>Page 12</b>



Item No.	60 HZ Model Number			Description	
	CIM0836xx49		CIM1136xx49		
1	2031544-01S		2031544-01S	2031544-01S	Front Panel
2	9031237-01		9031237-01	9031237-01	Front Panel Screws
3	3022007-05		3022007-05	3022007-05	Left Side Side Panel
4	3022012-08		3022012-08	3022012-08	Top Panel-Air Cooled
5	3022012-03		3022012-03	3022012-03	Top Panel-Remote and Water Cooled
6	9031046-01P		9031046-01P	9031046-01P	Rear Cover Screws
7	3013634-01		3013634-01	3013634-01	Rear Cover
8	3022007-06		3022007-06	3022007-06	Right Side Panel-Remote and Water Cooled
9	3022007-04		3022007-04	3022007-04	Right Side Panel-Air Cooled
10	3013674-01		3013674-01	3013674-01	Junction Box Cover
11	9031046-01P		9031046-01P	9031046-01P	Junction Box Screw
12	2021801-01		2021801-01	2021801-01	Left Front Corner Post
13	2021801-02		2021801-02	2021801-02	Right Front Corner post
14	3013637-02		3013637-02	3013637-02	Brace 30 Inch
15	3013636-01		3013636-01	3013636-01	Rear Brace
16	9051725-02		9051725-02	9051725-02	Base
17	2021800-01		2021800-01	2021800-01	Front Left Brace
18	2021800-02		2021800-02	2021800-02	Front Right Brace
19	2021798-01		2021798-01	2021798-01	Right Side Framework 30"Assembly
20	2021799-01		2021799-01	2021799-01	Left Side Framework 30"Assembly
21	9011369-02		9011369-02	9011369-02	Elevation Skid 30 Inch
22	9011378-01		9011378-01	9011378-01	Carton Liner 30 Inch
23	9051765-01		9051765-01	9051765-01	Shipping Bracket 2 Req. (Field Installed)
24	9011374-05		9011374-05	9011374-05	Carton, Elevation 30 Inch
25	9011320-06		9011320-06	9011320-06	Corner Post (Each), Elevation, (4 Required)
	9031026-04P		9031026-04P	9031026-04P	Pop Rivets Not Shown ( Package of 10)

	CIM0835xx49	50 HZ	CIM1135xx49	50 HZ	Description
1	2031544-01S		2031544-01S		Front Panel
2	9031237-01		9031237-01		Front Panel Screws
3	3022007-05		3022007-05		Left Side Side Panel
4	3022012-08		3022012-08		Top Panel-Air Cooled
5	3022012-03		3022012-03		Top Panel-Remote and Water Cooled
6	9031046-01P		9031046-01P		Rear Cover Screws
7	3013634-01		3013634-01		Rear Cover
8	3022007-06		3022007-06		Right Side Panel-Remote and Water Cooled
9	3022007-04		3022007-04		Right Side Panel-Air Cooled
10	3013674-01		3013674-01		Junction Box Cover
11	9031046-01P		9031046-01P		Junction Box Screw
12	2021801-01		2021801-01		Left Front Corner Post
13	2021801-02		2021801-02		Right Front Corner Post
14	3013637-02		3013637-02		Brace 30 Inch
15	3013636-01		3013636-01		Rear Brace
16	9051725-02		9051725-02		Base
17	2021800-01		2021800-01		Front Left Brace
18	2021800-02		2021800-02		Front Right Brace
19	2021798-01		2021798-01		Right Side Framework 30"Assembly
20	2021799-01		2021799-01		Left Side Framework 30"Assembly
21	9011369-02		9011369-02		Elevation Skid 30 Inch
22	9011378-01		9011378-01		Carton Liner 30 Inch
23	9051765-01		9051765-01		Shipping Bracket 2 Req. (Field Installed)
24	9011374-05		9011374-05		Carton, Elevation 30 Inch
25	9011320-06		9011320-06		Corner Post (Each), Elevation, (4 Required)
	9031026-04P		9031026-04P		Pop Rivets Not Shown ( Package of 10)



The Model Number of the machine has a designator for the Cube Size

Example: **CIM0836F49** **F = Full Cube**

**CIM0836HA49** **H = Half Cube**

**CIM0836GA49** **G = GRANDE Cube**

Item No.	60 HZ Model Number				Description	
	CIM0836XX49	CIM0836GX49		CIM1136XX49		CIM1137XX49
1	9051823-01S	9051823-01S		9051823-01S	9051823-01S	Lower Curtain Assembly
2	9051760-01	9051760-01		9051760-01	9051760-01	Evaporator Cover ("Splash Guard")
3	9021010-05	9021010-05		9021010-05	9021010-05	Hose Clamp, Plastic
4	9051766-01	9051766-01		9051766-01	9051766-01	Water Distribution Tube Assembly
5	9051749-05	9051749-05		9051749-05	9051749-05	Water Tube, Side
5A	9051780-01	9051780-01		9051780-01	9051780-01	Water Tube Upper
6	9091177-01	9091177-01		9091177-01	9091177-01	Coupler, Straight, 5/8 I.D. Tubing
7	9051748-01	9051748-01		9051748-01	9051748-01	Water Tube, Sump
8	9051737-01	9051737-01		9051737-01	9051737-01	Sump/Water Trough
9	2062336-03S	2062336-03S		2062336-03S	2062336-03S	Water Pump
10	9041105-05	9041105-05		9041105-05	9041105-05	Purge Valve
11	9051738-01	9051738-01		9051738-01	9051738-01	Top Cover
12	9041108-02	9041108-02		9041108-02	9041108-02	Water Inlet Valve
13	9091140-01	9091140-01		9091140-01	9091140-01	Drain Fitting
14	9021010-04	9021010-04		9021010-04	9021010-04	Hose Clamp, Plastic
15	1051224-01	1051224-01		1051224-01	1051224-01	Float Switch Assembly (Includes Instructions)
16	<b>9051856-01</b>	<b>9051856-01</b>		<b>9051856-01</b>	<b>9051856-01</b>	<b>Purge Valve Tubing to Drain</b>
17	9051541-01	9051541-01		9051541-01	9051541-01	Purge Valve Tube to Inlet Outlet Bracket
18	9051739-01	9051739-01		9051739-01	9051739-01	Inlet Outlet Bracket
19	<b>1051380-01B</b>			<b>1051380-01B</b>	<b>1051380-01B</b>	<b>Evaporator - FULL Cube tp</b>
19	<b>1051380-02B</b>			<b>1051380-02B</b>	<b>1051380-02B</b>	<b>Evaporator - HALF Cube tp</b>
20	9051782-36	9051782-36		9051782-36	9051782-36	Water Inlet Valve to Inlet Outlet Bracket Tube
21		<b>1051380-03B</b>				<b>Evaporator - Grande Cube tp</b>
22	9051001-02	9051001-02			9051001-02	Harvest Assist Guide
23	9051840-01	9051840-01			9051840-01	Poppet Valve (for the Evaporator Sump)
	2021776-01S	2021776-01S		2021776-01S	2021776-01S	Compressor Base (Not Shown)
	<b>208-230/60/1</b>	<b>208-230/60/1</b>		<b>208-230/60/1</b>	<b>208-230/60/3</b>	<b>Machine Voltage</b>

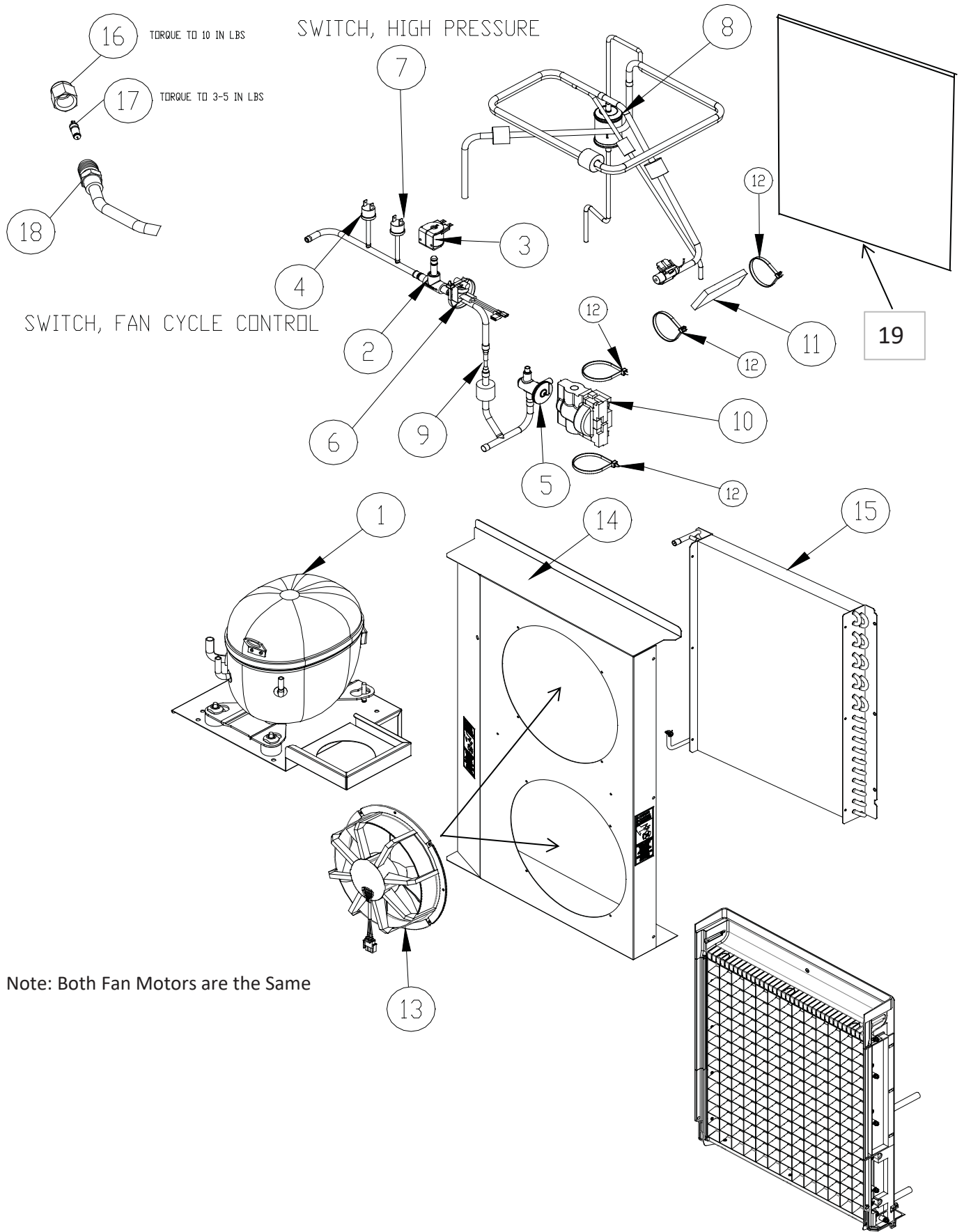
The Model Number of the machine has a designator for the Cube Size

CIM0836FAXX49 F = Full Cube Cube Size = 7/8 x 7/8 x 7/8

CIM0836HAXX49 H = Half Cube Cube Size = 3/8 x 7/8 x 7/8

CIM0836GA G = Grande Cube Cube Size = 1 1/4 x 1 1/8 x 7/8

Item No.	50 HZ Model Number				Description
	CIM0835XX49	CIM0835GX49		CIM1135XX49	
1	9051823-01	9051823-01		9051823-01	Lower Curtain Assembly
2	9051760-01	9051760-01		9051760-01	Evaporator Cover ("Splash Guard")
3	9021010-05	9021010-05		9021010-05	Hose Clamp, Plastic
4	9051766-01	9051766-01		9051766-01	Water Distribution Tube Assembly
5	9051749-05	9051749-05		9051749-05	Water Tube, Side
5A	9051749-03	9051749-03		9051749-03	Water Tube Upper
6	9091177-01	9091177-01		9091177-01	Coupler, Straight, 5/8 I.D. Tubing
7	9051748-01	9051748-01		9051748-01	Water Tube, Sump
8	9051737-01	9051737-01		9051737-01	Sump/Water Trough
9	2062336-03S	2062336-03S		2062336-03S	Water Pump
10	9041105-05	9041105-05		9041105-05	Purge Valve
11	9051738-01	9051738-01		9051738-01	Top Cover
12	9041108-02	9041108-02		9041108-02	Water Inlet Valve
13	9091140-01	9091140-01		9091140-01	Drain Fitting
14	9021010-04	9021010-04		9021010-04	Hose Clamp, Plastic
15	1051224-01	1051224-01		1051224-01	Float Switch Assembly (Includes Instructions)
16	<b>9051856-01</b>	<b>9051856-01</b>		<b>9051856-01</b>	<b>Purge Valve Tubing to Drain</b>
17	9051541-01	9051541-01		9051541-01	Purge Valve Tube to Inlet Outlet Bracket
18	9051739-01	9051739-01		9051739-01	Inlet Outlet Bracket
19	<b>1051380-01A</b>			<b>1051380-01A</b>	<b>Evaporator - FULL Cube tp</b>
19	<b>1051380-02A</b>			<b>1051380-02A</b>	<b>Evaporator - HALF Cube tp</b>
20	9051782-36	9051782-36		9051782-36	Water Inlet Valve to Inlet Outlet Bracket Tube
21		<b>1051380-03A</b>			<b>Evaporator - Grande Cube tp</b>
22	9051001-02	9051001-02		9051001-02	Harvest Assist Guide
23	9051840-01	9051840-01		9051840-01	Poppet Valve (for the Evaporator Sump)
	2021776-01S	2021776-01S		2021776-01S	Compressor Base (Not Shown)
	<b>208-230/50/1</b>	<b>208-230/50/1</b>		<b>208-230/50/1</b>	<b>Machine Voltage</b>



Note: Both Fan Motors are the Same

REFERENCE PAGE 4 AND 5 FOR EVAPORATOR

**CIM Service Parts**

**Air Cooled**

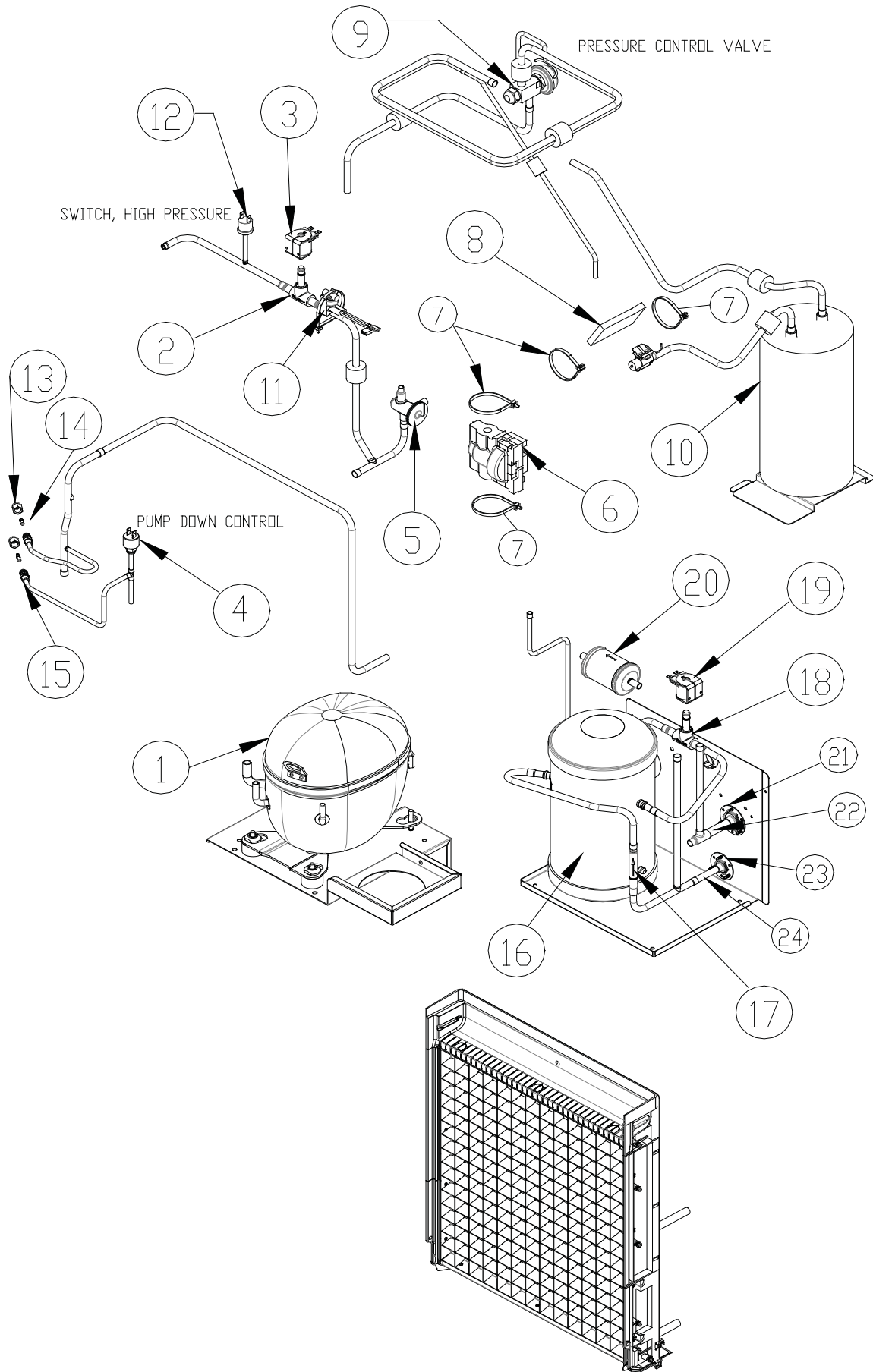
Note: G=Grande Cube in the Machine Model Number

Item No.	Model Number				Description
	CIM0836XA49	CIM0836GA49	CIM1136XA49	CIM1137xA49	
	60 HZ	60 HZ	60 HZ	60 HZ - 3 PH	
<b>1</b>	<b>9181139-11</b>	<b>9181240-11</b>	<b>9181240-11</b>	<b>9181140-13</b>	<b>Compressor</b>
<b>2</b>	9151192-101	9151198-101	9151198-101	9151198-101	Hot Gas Valve Body
<b>3</b>	9151193-02	9151193-02	9151193-02	9151193-02	Hot Gas Valve Coil (240 V)
<b>4</b>	9041106-01	9041106-01	9041106-01	9041106-01	Switch, Fan Cycle
<b>5</b>	9151204-101	9151152-101	9151204-101	9151152-101	TXV
<b>6</b>	9041098-02	9041098-02	9041098-02	9041098-02	High Temp Switch
<b>7</b>	9041111-01	9041111-01	9041111-01	9041111-01	Switch, High Pressure
<b>8</b>	9151163-03	9151163-03	9151163-03	9151163-03	Drier (Included in Compressor Kit)
<b>9</b>	Not Used	Not Used	Not Used	Not Used	Restrictor
<b>10</b>	9021103-01	9021103-01	9021103-01	9131544-01	Strap TXV Bulb
<b>11</b>	9131143-02	9131143-02	9131143-02	9131143-02	Insulation, Bulb
<b>12</b>	9021021-01	9021021-01	9021021-01	9021021-01	Cable Tie-For TXV and Bulb Insulation
<b>13</b>	9161150-22	9161150-22	9161150-22	9161150-22	Fan Motor Assembly
<b>14</b>	3013697-02	3013697-02	3013697-02	3013697-02	Fan Shroud
<b>15</b>	9141153-01	9141153-01	9141153-01	9141153-01	Condenser
<b>16</b>	9091086-03	9091086-03	9091086-03	9091086-03	Service Valve Cap
<b>17</b>	9091086-02	9091086-02	9091086-02	9091086-02	Service Valve Core
<b>18</b>	9091086-01	9091086-01	9091086-01	9091086-01	Service Valve Stem
<b>19</b>	9131574-02	9131574-02	9131574-02	9131574-02	Air Filter
	208-230/60/1	208-230/60/1	208-230/60/1	208-230/60/3	Machine Voltage

Note: G=Grande Cube in the Machine Model Number

Item No.	Model Number				Description
	CIM0835XA49	CIM0835GA49	CIM1135XA49		
	50 HZ	50 HZ	50 HZ		
<b>1</b>	<b>9181140-12</b>	<b>9181141-12</b>	<b>9181141-12</b>		<b>Compressor</b>
<b>2</b>	9151192-101	9151198-101	9151192-101		Hot Gas Valve Body
<b>3</b>	9151193-02	9151193-02	9151193-02		Hot Gas Valve Coil (240 V)
<b>4</b>	9041106-01	9041106-01	9041106-01		Switch, Fan Cycle
<b>5</b>	9151204-101	9151152-101	9151204-101		TXV
<b>6</b>	9041098-02	9041098-02	9041098-02		High Temp Switch
<b>7</b>	9041111-01	9041111-01	9041111-01		Switch, High Pressure
<b>8</b>	9151163-03	9151163-03	9151163-03		Drier (Included in Compressor Kit)
<b>9</b>	Not Used	Not Used	Not Used		Restrictor
<b>10</b>	9021103-01	9021103-01	9021103-01		Strap, TXV Bulb
<b>11</b>	9131143-02	9131143-02	9131143-02		Insulation, Bulb
<b>12</b>	9021021-01	9021021-01	9021021-01		Cable Tie-For TXV and Bulb Insulation
<b>13</b>	9161150-22	9161150-22	9161150-22		Fan Motor Assembly
<b>14</b>	3013697-02	3013697-02	3013697-02		Fan Shroud
<b>15</b>	9141153-01	9141153-01	9141153-01		Condenser
<b>16</b>	9091086-03	9091086-03	9091086-03		Service Valve Cap
<b>17</b>	9091086-02	9091086-02	9091086-02		Service Valve Core
<b>18</b>	9091086-01	9091086-01	9091086-01		Service Valve Stem
<b>19</b>	9131574-02	9131574-02	9131574-02		Air Filter
	220-240/50/1	220-240/50/1	220-240/50/1		Machine Voltage

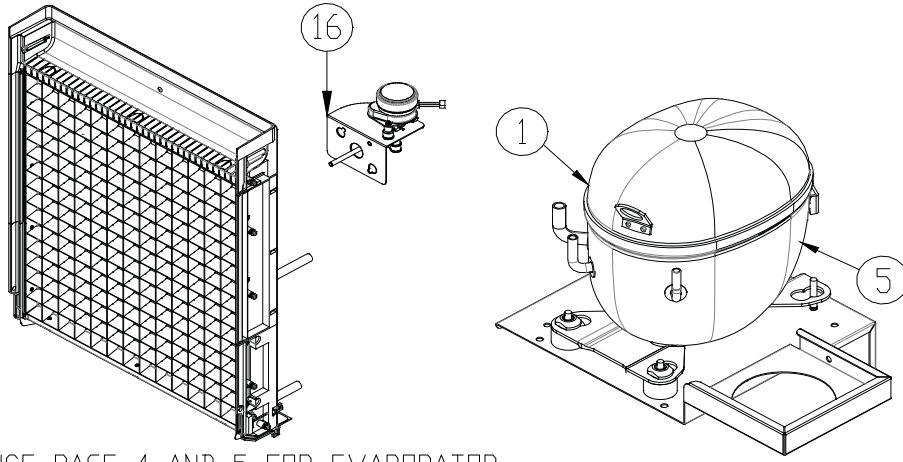
Reference Page 12 for Compressor Starting Components



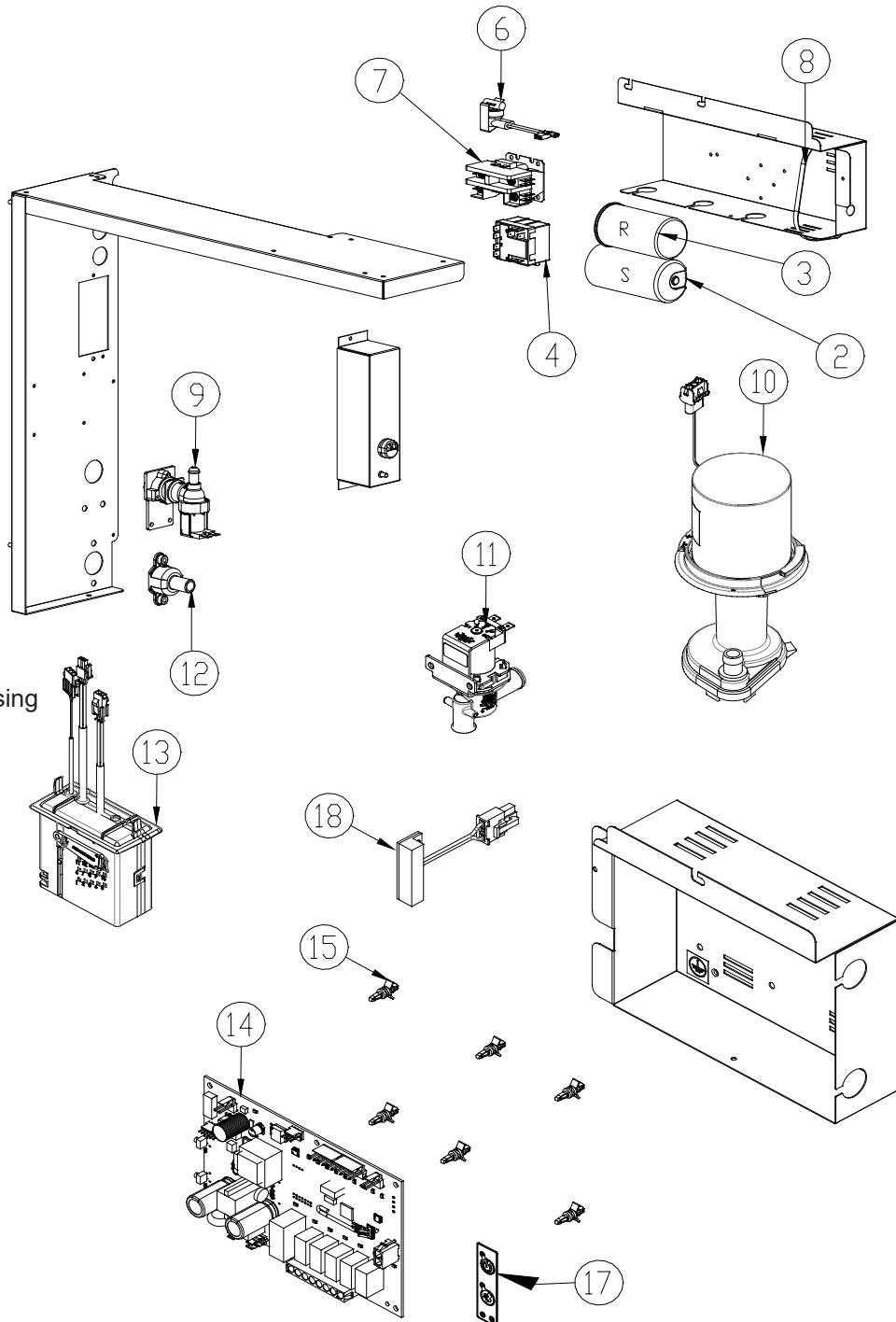
REFERENCE PAGE 4 AND 5 FOR EVAPORATOR

Item No.	Model Number					Description
	CIM0836XR49	CIM0835XR49	CIM1136XR49	CIM1135XR49		
	60 HZ	50 HZ	60 HZ	50 HZ		
<b>1</b>	<b>9181139-11</b>	<b>9181140-12</b>	<b>9181240-11</b>	<b>9181141-12</b>		<b>Compressor</b>
2	9151192-101	9151192-101	9151192-102	9151192-102	9151192-102	Hot Gas Valve Body
3	<b>9151193-02</b>	<b>9151193-02</b>	<b>9151193-02</b>	<b>9151193-02</b>	<b>9151193-02</b>	Hot Gas Valve Coil
4	9041092-02	9041092-02	9041092-02	9041092-02	9041092-02	Pump Down Control
5	9151212-101	9151152-101	9151212-101	9151152-101	9151152-101	TXV
6	9131143-02	9131143-02	9131143-02	9131143-02	9131143-02	Insulation Pad, TXV
7	9021021-01	9021021-01	9021021-01	9021021-01	9021021-01	Cable Tie-For TXV
8	9131143-02	9131143-02	9131143-02	9131143-02	9131143-02	Strap, TXV Bulb
9	NA	NA	NA	NA	NA	Pressure Control Valve
10	NA	NA	NA	NA	NA	Accumulator
11	9041098-02	9041098-02	9041098-02	9041098-02	9041098-02	High Temp Switch
12	9041111-01	9041111-01	9041111-01	9041111-01	9041111-01	Switch, High Pressure
13	9091086-03	9091086-03	9091086-03	9091086-03	9091086-03	Service Valve Cap
14	9091086-02	9091086-02	9091086-02	9091086-02	9091086-02	Service Valve Core
15	9091086-01	9091086-01	9091086-01	9091086-01	9091086-01	Service Valve Stem
16	9151060-01	9151060-01	9151060-01	9151060-01	9151060-01	Receiver
17	9151139-01	9151139-01	9151139-01	9151139-01	9151139-01	Check Valve
18	9151192-02	9151192-02	9151192-02	9151192-02	9151192-02	Liquid Line Solenoid
19	9151193-02	9151193-02	9151193-02	9151193-02	9151193-02	Liquid Line Coil
20	9151163-03	9151163-03	9151163-03	9151163-03	9151163-03	Drier <b>(Included in Compressor Kit)</b>
21	9091001-09	9091001-09	9091001-09	9091001-09	9091001-09	1/2 Inch Coupling Flange (Large)
22	9091001-12	9091001-12	9091001-12	9091001-12	9091001-12	1/2 Inch Coupling (Large)
23	9091001-03	9091001-03	9091001-03	9091001-03	9091001-03	3/8 Inch Coupling Flange (Small)
24	9091001-11	9091001-11	9091001-11	9091001-11	9091001-11	3/8 Inch Coupling (Small)
	<b>208-230/60/1</b>	<b>220-240/50/1</b>	<b>208-230/60/1</b>	<b>220-240/50/1</b>	<b>208-230/60/3</b>	← Machine Voltage

Reference Page 12 for Compressor Starting Components



REFERENCE PAGE 4 AND 5 FOR EVAPORATOR



Thermistor in Float Housing  
9041112-01

Item No.	Model Number					Description
	CIM0836XX49	CIM0836GA49	CIM1136W		CIM1137W	
1						
2						
3						
4						
5						
6	9041098-02	9041098-02	9041098-02		9041098-02	Switch, High Temp
7	9101002-06	9101002-06	9101002-06		9101002-06	Contactora
8	9021096-01	9021096-01	9021096-01		9021096-01	Cable Tie, Metal
9	9041108-02	9041108-02	9041108-02		9041108-02	Valve, Water Inlet
10	2062336-03S	2062336-03S	2062336-03S		2062336-03S	Water Pump
11	9041105-05	9041105-05	9041105-05		9041105-05	Purge Valve
12	9091140-01	9091140-01	9091140-01		9091140-01	Purge Drain
13	1051224-01	1051224-01	1051224-01		1051224-01	Float Switch Assembly (Includes Instructions)
	9041112-01	9041112-01	9041112-01		9041112-01	Thermister
14	9101414-01	9101414-01	9101414-01		9101414-01	Board Dual Voltage
15	9051698-01P	9051698-01P	9051698-01P		9051698-01P	Plastic Standoff, Control Board (Pkg of 10)
16	9161134-02	9161134-02	9161134-02		9161134-02	Harvest Assist
17	9101394-01	9101394-01	9101394-01		9101394-01	Membrane Switch
18	9101379-01	9101379-01	9101379-01		9101379-01	Switch, Magnetic Reed (Bin Control On Evap)
	208-230/60/1	208-230/60/1	208-230/60/1		208-230/60/1	← Machine Voltage

Item No.	Model Number 220-240/50/1					← Machine Voltage
	CIM0835XX49		CIM1135XX49			
1						
2						
3						
4						
5						
6	9041098-02		9041098-02			Switch, High Temp
7	9101002-08		9101002-08			Contactora
8	9021096-01		9021096-01			Cable Tie, Metal
9	9041108-02		9041108-02			Valve, Water Inlet
10	2062336-03S		2062336-03S			Water Pump
11	9041105-05		9041105-05			Purge Valve
12	9091140-01		9091140-01			Purge Drain
13	1051224-01		1051224-01			Float Switch Assembly (Includes Instructions)
	9041112-01		9041112-01			Thermister
14	9101414-01		9101414-01			Board Dual Voltage
15	9051698-01P		9051698-01P			Plastic Standoff, Control Board (Pkg of 10)
16	9161134-02		9161134-02			Harvest Assist
17	9101394-01		9101394-01			Membrane Switch
18	9101379-01		9101379-01			Switch, Magnetic Reed (Bin Control On Evap)

When a CIM Series Cuber is mounted on a dispenser, the KCUBEDISP install kit is required.

Replacement Thermostatic Bin Control Part Number 9041097-01

