



**SERVICE PARTS MANUAL  
48" MODULAR CUBERS**

**Air & Remote Cooled Units with R449 Refrigerant**

**CIM1446xA49 / CIM1446xR49  
CIM2046xR49**

**R449  
60hz MODELS**

CIM1446FA49  
CIM1446HA49  
CIM1446FR49  
CIM1446HR49

CIM2046FR49  
CIM2046HR49



Parts Manual for  
1400-2000 lb  
CIM 48" Cuber  
60hz Models

## Disclaimer:

With the exception of the cover page and the one you are presently reading, this parts manual is unedited since it was revised in 2024 by Ice-O-Matic. This parts manual only covers the models that were manufactured at the date of publication. The 48" R449 models are still in transition from the R404 refrigerant variants.

The water cooled versions, CIM1407 and CIM2047 have an expected release date around the 3rd quarter of 2026. Thus this parts manual doesn't include them.

As soon as the full line is released, it's likely, a new parts manual listing the missing models will follow. This document will be replaced once the complete parts manual is published.

This document was modified by Gulf Ice Systems, Inc. (05/13/26).

This parts list contains the service parts available for the following CIM Series.

**CIM1446XX49 208-230/60/1**

**CIM2046XX49 208-230/60/1**

**Model Number Example**

**CIM1446HA49**

**CIM = C**uber **I**ce **M**achine

**14** = 1400 lb, in 24 hours capacity    **15**=1500 lbs,    **18**=1800lbs,    **20**=2000 lbs.

**4** = 48 inch wide cabinet

**0** = 115 Volt,    **5** = 220-240/50/1    **6** = 208-230/60/1    **7** = 208-230/60/3

**H** = Half Cube Size,    **F** = Full Cube Size

**A** = Air Cooled Condenser,    **W** = Water Cooled Condenser    **R**=Remote Condenser

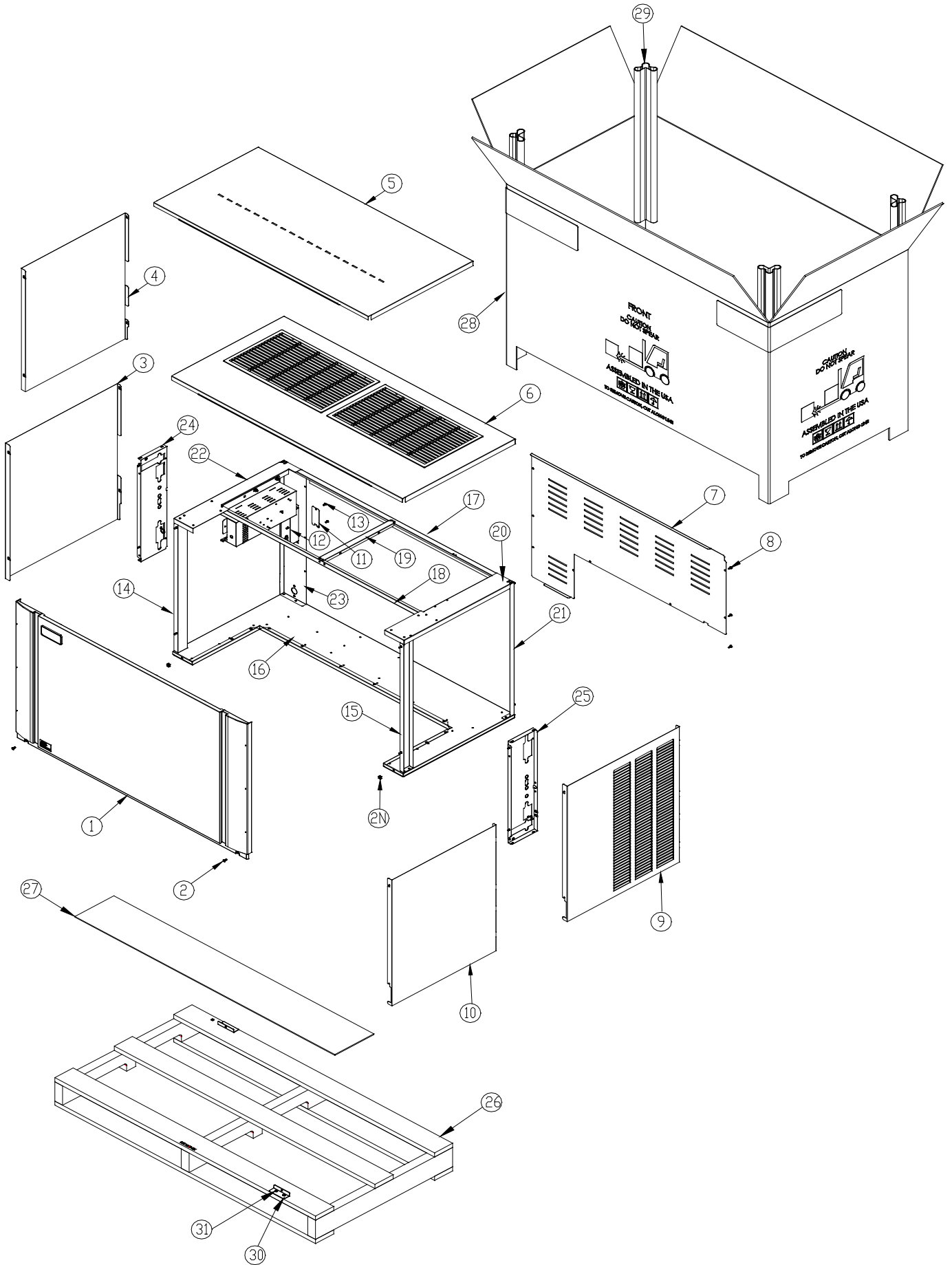
**49**= Refrigerant R449

**Check the model number on the data plate and refer to the correct listing for the specific component.**

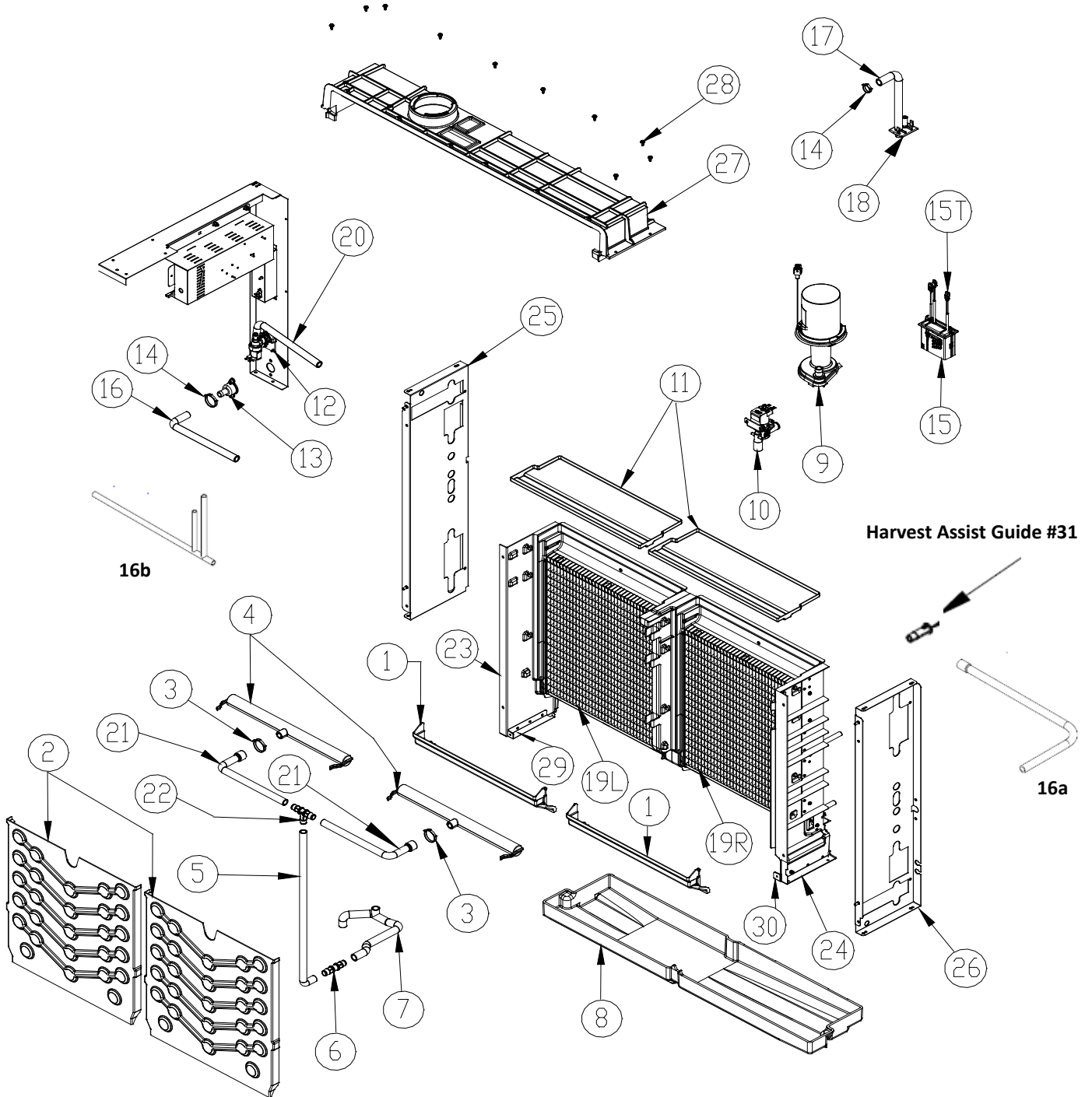
Check carefully that the correct part is identified and ordered.

<b>Table of Contents</b>	<b>Page 1</b>
<b>Cabinet</b>	<b>Page 2-3</b>
<b>Water System</b>	<b>Page 4-5</b>
<b>Air Cooled Condenser</b>	<b>Page 6-7</b>
<b>Remote Condenser</b>	<b>Page 8-9</b>
<b>Electrical</b>	<b>Page 10</b>

Ice-O-Matic  
11100 East 45th Ave.  
Denver Co. 80239  
800-423-3367



Item No.	Model Number				Description	
	CIM1446XX49			CIM2046XX49		
1	2031546-01S	2031546-01S		2031546-01S	2031546-01S	Front Panel
2	9031098-02P	9031098-02P		9031098-02P	9031098-02P	Front Panel Screws
2N	9031141-01P	9031141-01P		9031141-01P	9031141-01P	Plastic Nut
3	3022007-05	3022007-05		3022007-05	NA	Left Side Panel-Air Cooled
4	3022007-05	3022007-05		3022007-05	3022007-05	Left Side Panel-Remote and Water Cooled
5	3022012-05	3022012-05		3022012-05	3022012-05	Top Panel-Remote and Water Cooled
6	3022012-09	3022012-09		3022012-09	NA	Top Panel-Air Cooled
7	3013634-03	3013634-03		3013634-03	3013634-03	Rear Cover, Remote
8	9031046-01P	9031046-01P		9031046-01P	9031046-01P	Rear Cover Screws
9	3022007-04	3022007-04		3022007-04	NA	Right Side Panel-Air Cooled
10	3022007-06	3022007-06		3022007-06	3022007-06	Right Side Panel-Remote and Water Cooled
11	3013674-01	3013674-01		3013674-01	3013674-01	Junction Box Cover
12	2101494-01	2101494-01		2101494-01	2101494-01	Junction Box
13	9031046-01P	9031046-01P		9031046-01P	9031046-01P	Junction Box Screw
14	2021801-01	2021801-01		2021801-01	2021801-01	Left Front Corner post
15	2021801-02	2021801-02		2021801-02	2021801-02	Right Front Corner post
16	2101505-01	2101505-01		2101505-01	2101505-01	Base
17	3013636-02	3013636-02		3013636-02	3013636-02	Rear Brace 48
18	3013637-03	3013637-03		3013637-03	3013637-03	Front Brace
19	3013705-01	3013705-01		3013705-01	3013705-01	Cross Brace
20	3013722-01	3013722-01		3013722-01	3013722-01	Top Right Frame Work
21	2021808-01	2021808-01		2021808-01	2021808-01	Right Rear Corner
22	2021812-01	2021812-01		2021812-01	2021812-01	Top Left Frame 48 inch
23	2021806-01	2021806-01		2021806-01	2021806-01	Left Side Framework Assembly 48 inch
24	2021800-01	2021800-01		2021800-01	2021800-01	Front Left Brace Assembly
25	2021800-02	2021800-02		2021800-02	2021800-02	Front Right Brace Assembly
26	9011369-01	9011369-01		9011369-01	9011369-01	Elevation Skid
27	9011378-03	9011378-03		9011378-03	9011378-03	Carton Liner, Elevation 48 inch
28	9011374-03	9011374-03		9011374-03	9011374-03	Carton, Elevation 48 inch
29	9011320-06	9011320-06		9011320-06	9011320-06	Corner Post, (4 Required)
30	9051765-01	9051765-01		9051765-01	9051765-01	Shipping Bracket 4 Req. (Field Installed)
31	9031241-01P	9031241-01P		9031241-01P	9031241-01P	Screw



Item No.	Model Number			Description
	CIM1446XX49	CIM2046XX49		
1	9051823-01S	9051823-01S	9051823-01S	Lower Curtain Assembly
2	9051760-01	9051760-01	9051760-01	Evaporator Cover
3	9021010-06	9021010-06	9021010-06	Hose Clamp, Plastic
4	9051766-01	9051766-01	9051766-01	Water Distribution Tube Assembly
5	9051749-06	9051749-06	9051749-06	Water Tube, Lower, Dual
6	9091177-02	9091177-02	9091177-02	Coupler, Straight, 5/8 I.D. Tubing
7	9051748-01	9051748-01	9051748-01	Water Tube, Sump
8	9051771-01	9051771-01	9051771-01	Sump/Dual Evap
9	2062336-04S	2062336-04S	2062336-04S	Water Pump
10	9041105-05	9041105-05	9041105-05	Purge Valve
11	9051738-01	9051738-01	9051738-01	Top Cover
12	9041108-03	9041108-03	9041108-03	Water Inlet Valve
13	9091140-01	9091140-01	9091140-01	Purge Drain Fitting
14	9021010-04	9021010-04	9021010-04	Hose Clamp, Plastic
15	1051224-01	1051224-01	1051224-01	Float Switch Assembly (Includes Instructions)
15T	9041112-01	9041112-01	9041112-01	Float Thermistor
16a	9051873-01	9051873-01	9051873-01	Purge Valve Tubing to Drain ( Right Evap.)
16b	9051855-01	9051855-01	9051855-01	Purge Valve Tubing to Drain ( Left Evap.)
17	9051541-01	9051541-01	9051541-01	Purge Tube
18	9051739-01	9051739-01	9051739-01	Inlet Outlet Bracket
19	1051380-01A*	1051380-01A*	1051380-01A*	Evaporator-FULL Cube tp
19	1051380-02A*	1051380-02A*	1051380-02A*	Evaporator-HALF Cube tp
20	9051782-36	9051782-36	9051782-36	Tubing, Water Inlet
21	9051749-07	9051749-07	9051749-07	Water Tube, Upper Dual
22	9091181-01	9091181-01	9091181-01	Coupler, Tee, 5/8 I.D. Tubing
23	9051758-01	9051758-01	9051758-01	Evaporator Support Left Side
24	9051759-01	9051759-01	9051259-01	Evaporator Support Right Side
25	2021800-01	2021800-01	2021800-01	Front Left Brace Assembly
26	2021800-02	2021800-02	2021800-02	Front Right Brace Assembly
27	9051767-01	9051767-01	9051767-01	Base, 48 inch Cuber
28	9031046-01P	9031046-01P	9031046-01P	Screw, 10-16 x 1/2
29	1051244-01	1051244-01	1051244-01	Left Side Sump Tab Replacement Kit
30	1051245-01	1051245-01	1051245-01	Right Side Sump Tab Replacement Kit
31	9051001-02	9051001-02	9051001-02	Harvest Assist Guide
32	9051840-01	9051840-01	9051840-01	Poppet Valve (for the Evaporator Sump)
	2021776-01S	2021776-01S	2021776-01S	Compressor Base (Not Shown)

**Example**

CIM1446**FA**49

CIM1446**HA**49

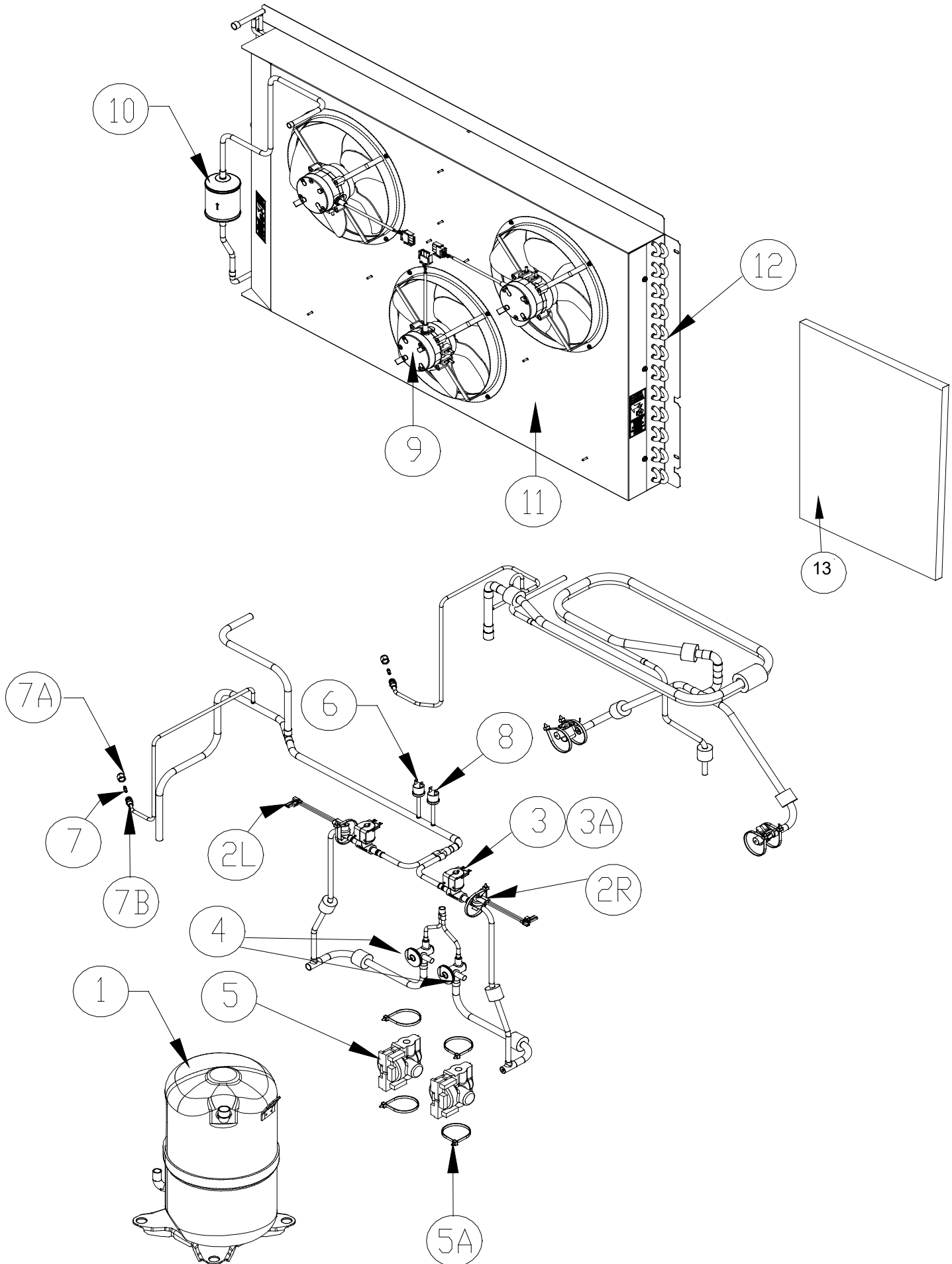
**F = Full Cube**

**H = Half Cube**

**Cube Size = 7/8 x 7/8 x 7/8**

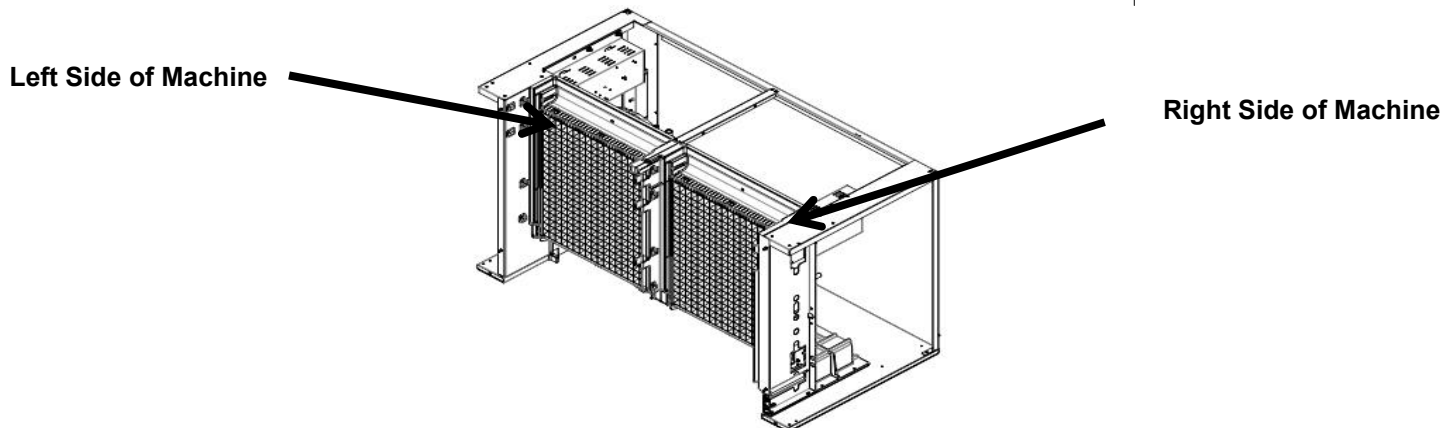
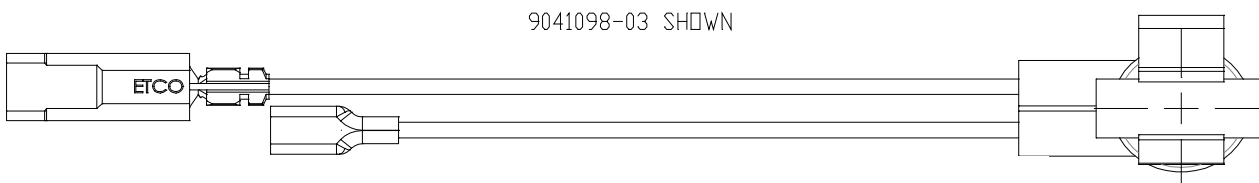
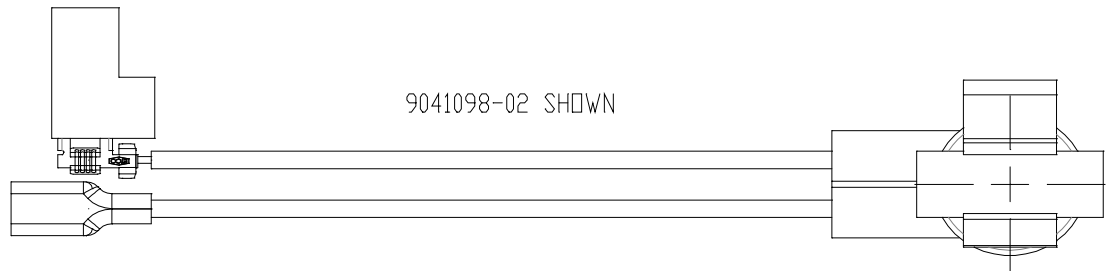
**Cube Size = 3/8 x 7/8 x 7/8**

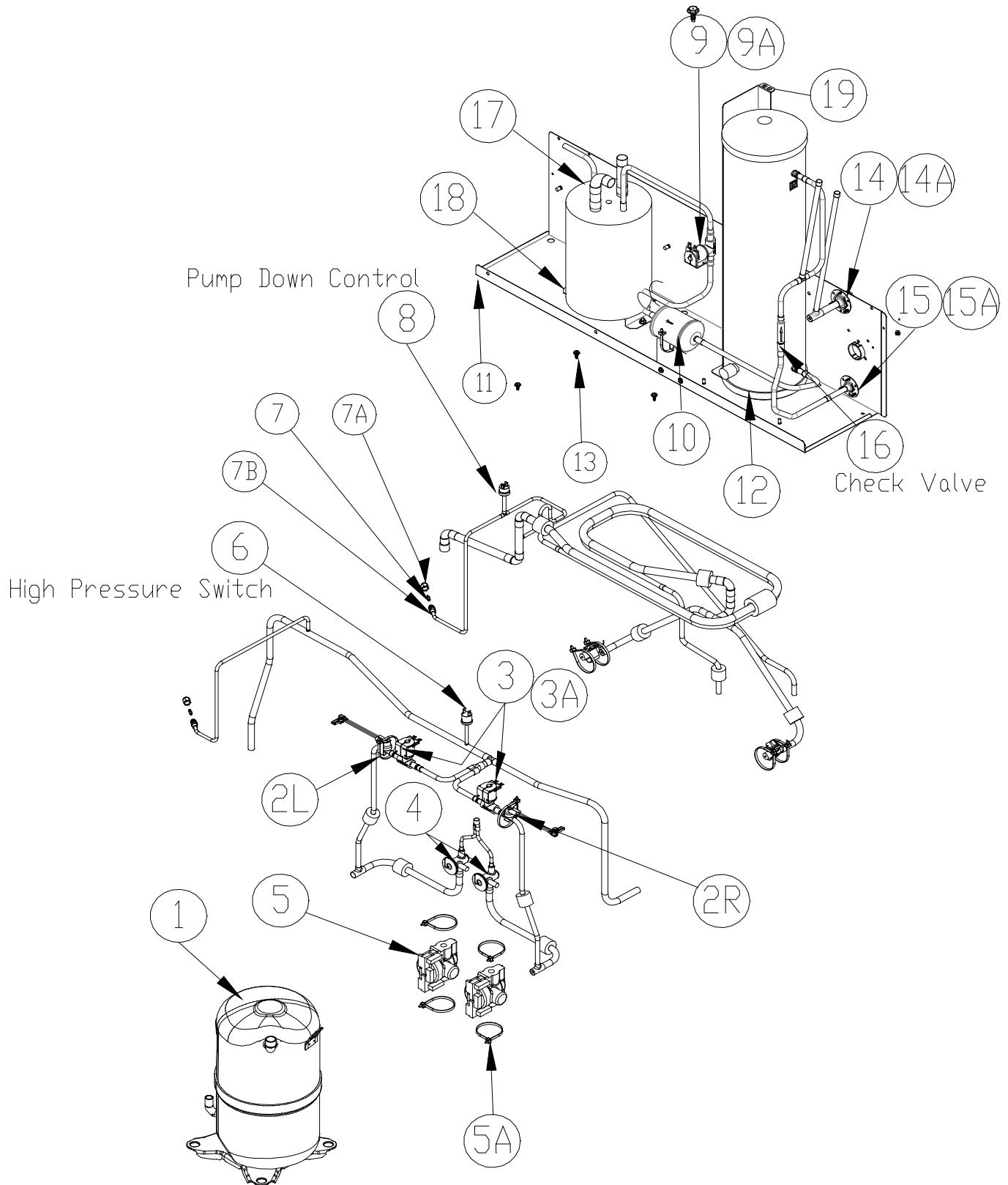
\*Note: The Left Hand Evaporator and Right Hand Evaporator have the same Part Number



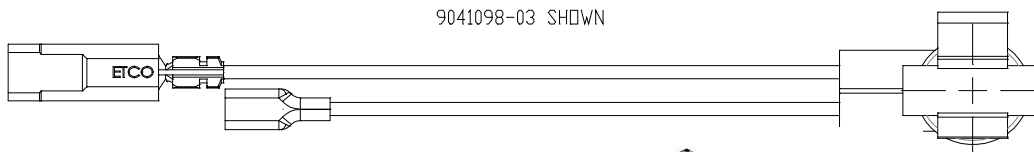
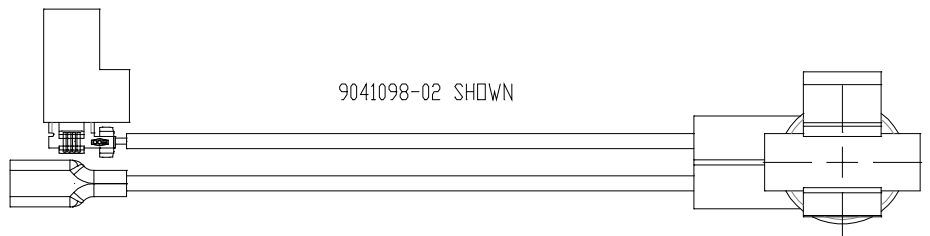
Item No.	Model Number					Description
	CIM1446XA49					
1	9181197-11					Compressor Kit
2R	9041098-02	9041098-02	9041098-02	9041098-02	9041098-02	High Temp Switch-Right Side of the machine
2L	9041098-03	9041098-03	9041098-03	9041098-03	9041098-03	High Temp Switch-Left Side of the machine
3	9151193-02	9151193-02	9151193-02	9151193-02	9151193-02	Hot Gas Valve Coil (240 V)
3A	9151192-102	9151192-102	9151192-102	9151192-102	9151192-102	Hot Gas Valve Body
4	9151204-101	9151165-101	9151165-101	9151165-101	9151165-101	TXV
5	9131544-01	9131544-01	9131544-01	9131544-01	9131544-01	Insulation, TXV
5A	9021021-01	9021021-01	9021021-01	9021021-01	9021021-01	Cable Tie-For TXV and Bulb Insulation
6	9041106-01	9041106-01	9041106-01	9041106-01	9041106-01	Switch, Fan Cycle
7	9091086-03	9091086-03	9091086-03	9091086-03	9091086-03	Service Valve Cap
7A	9091086-02	9091086-02	9091086-02	9091086-02	9091086-02	Service Valve Core
7B	9091086-01	9091086-01	9091086-01	9091086-01	9091086-01	Service Valve Stem
8	9041111-01	9041111-01	9041111-01	9041111-01	9041111-01	Switch, High Pressure
9	9161150-22	9161150-22	9161150-22	9161150-22	9161150-22	Fan Motor Assembly (Motors the Same)
10	9151163-02	9151163-02	9151163-02	9151163-02	9151163-02	Drier (Included in Compressor Kit)
11	3013639-02	3013639-02	3013831-01	3013639-02	3013639-02	Fan Shroud
12	9141154-01	9141154-01	9141154-02	9141154-01	9141154-01	Condenser
13	9131574-03	9131574-03	9131574-03	9131574-03	9131574-03	Air Filter

	208-230/60/1					← Machine Voltage
	CIM1446XA49					Starting Components (Included in Comp Kit)
	9181197-11					Compressor Kit
	9181003-21					Start Capacitor
	9181009-25					Run Capacitor
	9181010-10					Compressor Relay
	Internal					Overload

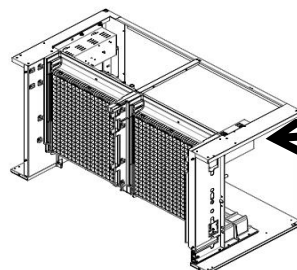




Item No.	Model Number				Description
	CIM1446XR49			CIM2046XR49	
<b>1B</b>	<b>9181142-11</b>			<b>9181143-11</b>	<b>Compressor Kit</b>
<b>2R</b>	9041098-02	9041098-02		9041098-02	High Temp Switch-Right side of the machine
<b>2L</b>	9041098-03	9041098-03		9041098-03	High Temp Switch-Left side of the machine
<b>3</b>	9151192-102	9151192-102		9151198-101	Hot Gas Valve Body
<b>3A</b>	9151193-02	9151193-02		9151193-02	Hot Gas Valve Coil
<b>4</b>	9151212-101	9151165-101		9151213-101	TXV
<b>5</b>	9131143-02	9131544-01		9131143-02	Insulation Pad, TXV
<b>5A</b>	9021021-01	9021025-01		9021021-01	Cable Tie-For TXV
<b>6</b>	9041111-01	9041111-01		9041111-01	Switch, High Pressure
<b>7</b>	9091086-03	9091086-03		9091086-03	Service Valve Cap
<b>7A</b>	9091086-02	9091086-02		9091086-02	Service Valve Core
<b>7B</b>	9191086-01	9191086-01		9091086-01	Service Valve Stem
<b>8</b>	9041092-02	9041092-02		9041092-02	Pump Down Control
<b>9</b>	9151192-02	9151192-02		9151192-02	Liquid Line Solenoid
<b>9A</b>	9151193-02	9151193-02		9151193-02	Liquid Line Coil
<b>10</b>	9151163-02	9151163-02		9151163-02	Drier (Included in Compressor Kit)
<b>11</b>	2021807-01	2021807-01		2021807-01	Base
<b>12</b>	9151109-01	9151109-01		9151109-01	Receiver
<b>13</b>	9031046-01P	9031046-01P		9031046-01P	Screws
<b>14</b>	9091001-09	9091001-09		9091001-09	1/2 Inch Coupling Flange (Large)
<b>14A</b>	9091001-12	9091001-12		9091001-12	1/2 Inch Coupling (Large)
<b>15</b>	9091001-03	9091001-03		9091001-03	3/8 Inch Coupling Flange (Small)
<b>15A</b>	9091001-11	9091001-11		9091001-11	3/8 Inch Coupling (Small)
<b>16</b>	9151139-01	9151139-01		9151139-01	Check Valve
<b>17</b>	NA	NA		2091241-01	Accumulator
<b>18</b>	NA	NA		3013721-01	Accumulator Support bracket
<b>19</b>	NA	NA		3013710-01	Large Receiver Bracket
	<b>CIM1446XR49</b>			<b>CIM2046XR49</b>	<b>Starting Components (Included in Comp Kit)</b>
	<b>9181142-11</b>			<b>9181143-11</b>	<b>Compressor Kit</b>
	<b>9181003-19</b>			<b>9181003-21</b>	Start Capacitor
	<b>9181009-12</b>			<b>9181009-20</b>	Run Capacitor
	<b>9181010-10</b>			<b>9181010-10</b>	Potential Relay
	<b>Internal</b>			<b>Internal</b>	Overload
	<b>208-230/60/1</b>			<b>208-230/60/1</b>	← Machine Voltage



**Left Side of Machine** →



← **Right Side of Machine**

Item No.	Model Number				Description	
	CIM1446XX49			CIM2046xx49		
1						
2						
3						
4						
5						
6R	9041098-02	9041098-02		9041098-02	9041098-02	High Temp Switch-Right side of the machine
6L	9041098-03	9041098-03		9041098-03	9041098-03	High Temp Switch-Left side of the machine
7	9101002-06	9101079-02		9101002-06	9101079-02	Contact
8	9021096-01	9021096-01		9021096-01	9021096-01	Cable Tie, Metal
9	9041108-03	9041108-03		9041108-03	9041108-03	Valve, Water Inlet
10	2062336-04S	2062336-04S		2062336-04S	2062336-04S	Water Pump
11	9041105-05	9041105-05		9041105-05	9041105-05	Purge Valve
12	9091140-01	9091140-01		9091140-01	9091140-01	Purge Drain
13	1051224-01	1051224-01		1051224-01	1051224-01	Float Switch Assembly (Includes Instructions)
13T	9041112-01	9041112-01		9041112-01	9041112-01	Float Thermister
14	9101414-01	9101414-01		9101414-01	9101414-01	Board Dual Voltage
15	9051698-01P	9051698-01P		9051698-01P	9051698-01P	Plastic Standoff, Control Board (Pkg of 10)
16	9161134-02	9161134-02		9161134-02	9161134-02	Harvest Assist
17	9101394-01	9101394-01		9101394-01	9101394-01	Membrane Switch
18	9101379-01	9101379-01		9101379-01	9101379-01	Switch, Magnetic Reed (Bin Control On Evap)
	208-230/60/1			208-230/60/1		← Machine Voltage

